

66 RANCH · LTD ·

9th Annual

Fall

BULL SALE

1 PM WEDNESDAY

DECEMBER 14

Bow Slope Shipping Association 2022
Brooks, Alberta

- 51** Long Yearling Purebred Black Angus Bulls
- 65** Fancy Black Angus 2nd Calvers NVB
- 52** 66 Ranch Purebred Black Angus
Bred Heifers - *Selling as Commercials*
- 160** Very Fancy 66 Ranch Black Angus
Commercial Bred Heifers NVB



Welcome



Welcome to our 9th Annual Fall Bull & Female Sale. We would like to Thank You, our past customers, for showing interest in our livestock and our program. And as well, any of you new to our program, thanks for taking the time to come and evaluate our livestock.

This fall on offer we will have 51 bulls from our April/May calving program. We held back a few complete sire groups from our Spring Bull Sale to be able to bring a strong set of bulls to this sale. Once again, we use May 10th as a cut off, for any bulls born after that are saved for our 2 year old program, which are offered at our Spring Sale. The same as our past Spring Bull Sale, we took the time to photo all the feet of the bulls on offer. We felt this was a must with the new times and people using the online videos as a way to select some of their new sires. You can find the videos at www.66ranchltd.com

The females that we have selected for this sale consist of 52 bred Purebred heifers selling as commercials. As well as 160 fancy 66 Ranch Black Angus bred commercial heifers. This year we have also decided to bring 65 fancy Black Angus commercial 2nd calvers. All the Purebred heifers were A.l'ed for 21 days starting July 10th then bull exposed for 21 days. The commercial heifers were all exposed to walking bulls July 10th for just 2 cycles (42 days). The 2nd calvers were exposed to walking bulls July 14th for 40 days. The 2nd calvers are all NVB, the commercial heifers are NVB and our purebred heifers carry our traditional 66 freeze brand. All these females on offer are bred to easy calving bulls and are expected to be turned out just like a cows is and calve on their own, unassisted.

Whether you need to purchase any bulls or females for replacements for your herd, or you are just interested in viewing our cattle for the first time. We would really appreciate it if you could join us after the sale for an evening of socializing and a little "country hospitality!"

Thanks

Kelsey, Malissa, Brett and Carter





9th Annual

Fall

BULL SALE

WEDNESDAY, DECEMBER 14, 2022

1 pm at Bow Slope Shipping Association
Brooks, Alberta

Offering

51 Long Yearling Purebred Black Angus Bulls

Commercial Females

65 Fancy Black Angus Commercial 2nd Calvers NVB

52 66 Ranch Purebred Black Angus Bred Heifers
Selling as Commercials

160 Very Fancy 66 Ranch Black Angus
Commercial Bred Heifers NVB

All 2nd Calvers Bull exposed for 40 days - All Bred Heifers for 42 days
- FEMALES SELL FOLLOWING THE BULLS -

AUCTIONEER: Frank Jenkins - 403-627-6700

SALE STAFF: Bow Slope Shipping Association
Lachie McKinnon - 403-362-1825
Erik Christensen - 403-363-9942
Dan Sewall - 403-363-0632

66 RANCH LTD.

**Kelsey & Malissa
Campbell & Family**

Box 66, Duchess, AB T0J 0Z0
Kelsey - 403-362-0672
Malissa - 403-501-9358
email: 66@66ranchltd.com
www.66ranchltd.com



Malissa & Kelsey, Carter & Brett

**ONLINE
BIDDING @
dvauction.com**
DETAILS PAGE 2

SALE DAY PHONES
AUCTION MART 403-362-5521
KELSEY'S CELL 403-362-0672
MALISSA'S CELL 403-501-9358

ACCOMMODATIONS:

Heritage Inn & Suites 403-362-8688

Ramada 403-362-6440

VIEWING: Bulls & females will be available for viewing at Bow Slope Shipping Association, on Tuesday, December 13.

PURCHASES RISK: Each animal becomes the risk of the purchaser as soon as sold. Insurance will be available sale day with Canadian Farm Insurance - Jill Wildman 780-305-1146.

BREEDER'S GUARANTEE: All the bulls will be semen tested and physically examined by our local vet and sold with a breeders guarantee. ***EVERY BULL at the sale will be sold with a 100% satisfaction guarantee.***

SIGHT UNSEEN: In the event you are unable to attend the sale or use the online option, bids can be given to sale staff or owners with satisfaction guaranteed.

CALVING EASE BULLS: **BW IN BOLD**

CAN'T MAKE IT ON SALE DAY?

Our sale will be broadcast online @

DVAuction
www.dvauction.com

We are pleased to announce that we will have the services of DVAuction. This will allow you to bid on the bulls and heifers via the internet. Of course, we would rather you attend the sale and our hospitality afterwards, but we well know today's world just keeps getting busier and busier! But, if for some reason you cannot attend, this gives you the opportunity to bid on the bulls and heifers at the live auction. Please remember to pre-register at www.dvauction.com 24 hrs. prior to the sale.

We also have available with this service is a live video of every animal in the sale. To view these videos go to our website www.66ranchltd.com and just click on view catalog. Videos are also available at www.dvauction.com. We encourage you if possible to view the cattle at the ranch prior to the sale.

Please contact Sarah @ 306-681-5340 with any questions or issues with registering for the sale.



PERFORMANCE DATA

AOD: Age of Dam

BW: Actual Birth Weight

205D: Weaning weight in lbs. adjusted to 205 days

365D: Yearling weight in lbs. adjusted to 365 days

EPD EXPLANATION

CE: Calving ease, predicts the ease with which a sire's calves will be born when bred to first-calf heifers. The higher the number, the higher the probability heifers will calve with no assistance.

BW: Birth weight, a prediction of a sire's ability to transmit birth weight to his progeny.

WW: Weaning weight, predictor of a sire's ability to transmit weaning growth to his progeny.

YW: Yearling weight, predictor of a sire's ability to transmit yearling growth to his progeny.

MILK: A predictor of a sire's genetic merit for milk and mothering ability as expressed in his daughters.

MCE: Maternal calving ease. The higher the number, the higher the probability that daughters will not require assistance at calving time.

Average EPDs for all Black Calves born in 2021

These are the numbers to compare the bulls in the catalog to:

EPDs	CE	BW	WW	YW	MILK	MCE
	+3.4	+2.0	+51	+89	+23	+6.6

EPDs in this catalog are as of Nov. 1/22

PLEASE NOTE:

- No bulls have been sold prior to the sale
- Bulls are sold in catalog order
- Heifers and 2nd Calvers sold at the end of the sale
- Updated weights & scrotal measurements will be available Sale Day
- 66 Ranch reserves the right to draw 250 straws of semen at our expense and at your convenience on any bull selling in the sale. For in-herd use only.

REFERENCE SIRE

66 THRIVE 8023F

MALE CKM 8023F 2057466 APRIL 21 2018

S A V THRIVE 5054 1943196

S A V RENOWN 3439
S A V ERICA 9448

66 MARCIA 5061C 1877324

BANDURA MR FIELD MASTER 92A
DEER RIVER MARCIA 147W

EPDs	CE	BW	WW	YW	MILK	MCE
	-5.0	+4.1	+68	+144	+17	+0.0

A walking bull raised at 66 Ranch. 8023F's calves weaned off very consistently. All big! A very respectable birth weight out of 8023F as well. Bull calves average 83 lbs. and heifer calves average 71 lbs.

1 son sells



LOT 1

66 THRIVE 479J

MALE CKM 479J 2238326 MAY 10 2021

66 THRIVE 8023F 2057466

S A V THRIVE 5054
66 MARCIA 5061C

66 BB BLOSSOM 74C 1867135

F-R MECHANIC 3025
66 BB BLOSSOM 511A

AOD	BW	205D	365D	EPDs	CE	BW	WW	YW	MILK
7	81	672	1184		+4.0	+1.4	+42	+89	+20



74C

DAM OF
LOT 1

BULLS SELL IN CATALOG ORDER

Updated weights & scrotal measurements available Sale Day

REFERENCE SIRE



7 sons sell

HF RISKY BUSINESS 135G

MALE HAMI 135G 2093092 JANUARY 28 2019

HA COWBOY UP 5405 1937042

HA OUTSIDE 3008

HA BLACKCAP LADY 1602

HF TIBBIE 282A 1753795

HF TIGER 5T

HF TIBBIE 103T

EPDs	CE	BW	WW	YW	MILK	MCE
	+10.0	+1.7	+70	+124	+22	+7.0

An extremely deep sided walking bull purchased from Hamilton Farms. We selected him for his calving ease and extremely good performance. His dam is a favourite at Hamilton's, a moderate framed cow with an excellent level udder. We sadly lost 135G to an injury, fortunately though we have semen in the tank to utilize his genetics for years to come. Bull calves average birthweight is 79 lbs. Heifer calves is 76 lbs.



Lot 2

LOT
2

66 COWBOY UP 310J

MALE CKM 310J 2231530 MAY 01 2021

HF RISKY BUSINESS 135G 2093092

HA COWBOY UP 5405

HF TIBBIE 282A

66 FANNY 179F 2058531

66 CHISM 1D

66 FANNY 84B

AOD	BW	205D	365D	EPDs	CE	BW	WW	YW	MILK
4	93	818	1317		+2.0	+3.5	+75	+124	+20

179F

DAM OF
LOT 2





Lot 3

**LOT
3**

66 COWBOY UP 342J

MALE CKM 342J 2231540 MAY 02 2021

HF RISKY BUSINESS 135G 2093092

HA COWBOY UP 5405

HF TIBBIE 282A

BAD LANDS BLACKBIRD 8138U 1429285

HILLFIRE LEGACY 422

BAD LANDS BLACKBIRD BLOSSOM 54

AOD	BW	205D	365D	EPDs	CE	BW	WW	YW	MILK
14	90	789	1234		+3.0	+2.6	+59	+99	+24



8138U

DAM OF
LOT 3

ALL BULLS SEMEN TESTED

& breeding soundness evaluated

BERRY CREEK VETERINARY CLINIC

The bulls offered for sale by 66 Ranch have all passed a breeding soundness examination and are classified as satisfactory potential breeders.

The heifers and 2nd calvers have all been examined to confirm pregnancy.

In my opinion the Angus seed stock offered for sale are in excellent health and in ideal body condition.

I consider this offering to be very good replacement stock for the commercial or purebred herd.

*Sincerely,
Kirby Finkbeiner, DVM*



Lot 4

LOT
4

66 COWBOY UP 277J

MALE CKM 277J 2231519 APRIL 29 2021

HF RISKY BUSINESS 135G 2093092

HA COWBOY UP 5405
HF TIBBIE 282A

66 LASSIE 341D 1930267

SCHIEFELBEIN EFFECTIVE 61
66 LASSIE 49B

AOD	BW	205D	365D	EPDs	CE	BW	WW	YW	MILK
6	70	575	1056		+14.0	-1.4	+42	+81	+21

341D

DAM OF
LOT 4



Lot 5

LOT
5

66 COWBOY UP 461J

MALE CKM 461J 2231592 MAY 08 2021

HF RISKY BUSINESS 135G 2093092

HA COWBOY UP 5405
HF TIBBIE 282A

66 BARBARA ROSE 391F 2058645

V D A R CEDAR WIND 8111
66 BARBARA ROSE 4D

AOD	BW	205D	365D	EPDs	CE	BW	WW	YW	MILK
4	75	754	1212		+12.0	-0.8	+56	+94	+21



Lot 6

LOT
6

66 COWBOY UP 207J

MALE CKM 207J 2231489 APRIL 26 2021

HF RISKY BUSINESS 135G 2093092

HA COWBOY UP 5405
HF TIBBIE 282A

DEER RIVER BLACKBIRD 10W 1521712

DEER RIVER 145P RIGHTTIME 325T
DEER RIVER BLACKBIRD 138T

AOD	BW	205D	365D	EPDs	CE	BW	WW	YW	MILK
13	75	717			+9.0	+0.6	+49	+84	+21



Lot 7

LOT
7

66 COWBOY UP 384J

MALE CKM 384J 2231555 MAY 04 2021

HF RISKY BUSINESS 135G 2093092

HA COWBOY UP 5405
HF TIBBIE 282A

66 PRIDE 607E 2003371

F-R CEDAR RIDGE 4210
66 PRIDE 197C

AOD	BW	205D	365D	EPDs	CE	BW	WW	YW	MILK
5	90	709	1148		+3.0	+3.2	+60	+104	+23

**CATALOG + VIDEO +
FEET PHOTOS**

ONLINE AT WWW.66RANCHLTD.COM
OR WWW.DVAUCTION.COM

10W
DAM OF
LOT 6



607E
DAM OF
LOT 7

198D
DAM OF
LOT 8



**LOT
8**

66 COWBOY UP 456J

MALE CKM 456J 2231589 MAY 08 2021

HF RISKY BUSINESS 135G 2093092

HA COWBOY UP 5405
HF TIBBIE 282A

66 IDELETTE 198D 1930134

STUART CHISM 82A
SOUTH FORK IDELETTE 274Z

AOD	BW	205D	365D	EPDs	CE	BW	WW	YW	MILK
6	80	659	1040		+7.0	+1.4	+54	+87	+16

REFERENCE SIRE



HOOVER DAM

MALE IMP 18U 1552414 JANUARY 25 2008

SYDGEN C C & 7 1552417

S A F CONNECTION
SYDGEN FOREVER LADY 4087

ERICA OF ELLSTON C124 14851883

TC GRIDIRON 258
ERICA OF ELLSTON V65

EPDs	CE	BW	WW	YW	MILK	MCE
	+7.0	-0.3	+46	+89	+25	+8.0

An A.I. sire we used exclusively on heifers. A real calving ease sire, that produces thick, attractive progeny. The females are quite attractive with excellent udders. Bull calves average birthweight is 79 lbs. Heifer calves is 74 lbs.



**LOT
9**

66 HOOVER DAM 388J

MALE CKM 388J 2231557 MAY 04 2021

HOOVER DAM 1552414

SYDGEN C C & 7
ERICA OF ELLSTON C124

66 LADY 298B 1805959

CONNEALY THUNDER
BAD LANDS LADY 8098U

AOD	BW	205D	365D	EPDs	CE	BW	WW	YW	MILK
8	75	695	1135		+7.0	+0.0	+43	+83	+24



298B

DAM OF
LOT 9



**LOT
10**

66 HOOVER DAM 409J

MALE CKM 409J 2231566 MAY 05 2021

HOOVER DAM 1552414

SYDGEN C C & 7
ERICA OF ELLSTON C124

66 HEDY 320G 2125179

CONNELLY THUNDER
BAD LANDS HEDY 7041T

AOD	BW	205D	365D	EPDs	CE	BW	WW	YW	MILK
3	76	594	1069		+9.0	-0.9	+32	+66	+23

320G

DAM OF
LOT 10



SIRES REPRESENTED

in this catalog

66 THRIVE 8023F
HF RISKY BUSINESS 135G
HOOVER DAM
66 RIGHT TIME 326D
BAD LANDS ALLIANCE 14W
66 ALLIANCE 17Z
F-R MEMENTO 7048E
HF SYNDICATE 213Z
BURNETT CHISUM 21G
BROOKING FIREBRAND 6068
66 PAYWEIGHT 134G
66 CHISM 48G

66 CHISM 1D
S A V RESOURCE 1441
BROOKING REAL ESTATE 6072
HOOVER COUNSELOR N29
BURNETT CANYON 40G
V D A R CEDAR WIND 8111
F-R 5099 8096F
V D A R REALLY WINDY 4097
BUFORD REBOUND C837
WERNER FLAT TOP 4136
HOOVER CUT ABOVE P427
COLE CREEK LIL SEAL 1166D
BULL'S EYE COMMAND 78F



Lot 11

LOT
11

66 HOOVER DAM 393J

MALE CKM 393J 2231559 MAY 04 2021

HOOVER DAM 1552414

SYDGEN C C & 7

ERICA OF ELLSTON C124

66 COUNTESS 431G 2121538

66 ALLIANCE 17Z

SOUTH FORK BARBARA 128X

AOD	BW	205D	365D	EPDs	CE	BW	WW	YW	MILK
3	78	640	1072		+3.0	+1.7	+50	+85	+23

ALL BULLS 100% GUARANTEED



Lot 12

LOT
12

66 HOOVER DAM 253J

MALE CKM 253J 2231504 APRIL 28 2021

HOOVER DAM 1552414

SYDGEN C C & 7

ERICA OF ELLSTON C124

66 BLACKCAP 240G 2121924

WK BOBCAT

66 BLACKCAP 312E

AOD	BW	205D	365D	EPDs	CE	BW	WW	YW	MILK
3	76	622	1011		+9.0	-0.1	+39	+69	+26



WE WELCOME YOUR VISIT
TO VIEW THE BULLS & FEMALES
ANYTIME PRIOR TO THE SALE

431G
DAM OF
LOT 11



240G
DAM OF
LOT 12

268G
DAM OF
LOT 13



Lot 13

**LOT
13**

66 HOOVER DAM 174J

MALE CKM 174J 2231476 APRIL 25 2021

HOOVER DAM 1552414

SYDGEN C C & 7
ERICA OF ELLSTON C124

66 BARBARA 268G 2119635

COLE CREEK BLACK CEDAR 46P
BLACK GEM LOVEMERE R 221N

AOD	BW	205D	365D	EPDs	CE	BW	WW	YW	MILK
3	65	564	1234		+10.0	-0.7	+41	+87	+23



**LOT
14**

66 HOOVER DAM 193J

MALE CKM 193J 2231483 APRIL 25 2021

HOOVER DAM 1552414

SYDGEN C C & 7
ERICA OF ELLSTON C124

66 ROSETTE 393G 2112998

SOUTH FORK CONVERGENCE 217Y
BAD LANDS LADY 4023P

AOD	BW	205D	365D	EPDs	CE	BW	WW	YW	MILK
3	75	546	986		+4.0	+1.2	+34	+67	+19

CALVING EASE BULLS **BW** IN **BOLD**

Dam Photos

The photos of dams in this catalog may not be the traditional combed up, blown off "Pretty" pictures most people use. These are pictures of our cows in their working clothes.

For any of you that are not completely familiar with our program, we take a photo of all our cows when we tag their newborn calf. This way we can see their bags anytime of the year, and are available to show all of you our cows when their udders are at their fullest, moments after they calve.



"A picture is worth a thousand words"

REFERENCE SIRE

66 RIGHT TIME 326D

MALE CKM 326D 1937174 APRIL 25 2016

LEACHMAN RIGHT TIME 779510

N BAR EMULATION EXT
LEACHMAN ERICA 0025

BAD LANDS LASSIE 1044Y 1655922

BAD LANDS ALLIANCE 14W
BAD LANDS LASSIE 5124R

EPDs	CE	BW	WW	YW	MILK	MCE
	+4.0	+0.5	+58	+81	+19	+10.0

Walking bull raised at 66 Ranch. What a maternal powerhouse!! Leachman Right Time on top and the dam is one of the best Alliance bred females at the Ranch. Longevity from the Right Time, we have Right Time cows last until 17 years old at our place. The Alliance will give you the perfect udders you are looking for as well as the extreme docility we all like. The neat thing with Alliance bred into the Right Time, is this sire has great scrotal, with that, the fertility will be passed onto his progeny. Bull calves average birthweight is 81 lbs. Heifer calves is 77 lbs.

1 son sells



1044Y

DAM OF
66 RIGHT
TIME 326D

AOD = AGE OF DAM



Lot 15

**LOT
15**

66 RIGHT TIME 422J

MALE CKM 422J 2231574 MAY 06 2021

66 RIGHT TIME 326D 1937174

LEACHMAN RIGHT TIME
BAD LANDS LASSIE 1044Y

BAD LANDS BARBARA 9079W 1502459

B/R NEW FRONTIER 095
BAD LANDS BARBARA 309N

AOD	BW	205D	365D	EPDs	CE	BW	WW	YW	MILK
13	78	721	1119		+7.0	+0.4	+45	+66	+19

REFERENCE SIRE

BAD LANDS ALLIANCE 14W

MALE CDS 14W 1502297 MARCH 24 2009

KMK ALLIANCE 6595 I87 1191922

SITZ ALLIANCE 6595
G A R EXT 916

BAD LANDS COUNTESS 214M 1120996

HIGH VALLEY 4C6 AMBUSH
BAD LANDS COUNTESS 442D

EPDs	CE	BW	WW	YW	MILK	MCE
	+0.0	+4.4	+82	+129	+22	+14.0

Deep ribbed and huge capacity with growth and thickness along with incredible docility. Super hair coat. A proven herd bull maker in the "Sewall" herd. And many of his daughters producing offspring at 66 Ranch. Bull calves average birthweight is 85 lbs. Heifer calves is 75 lbs.

1 son sells



**LOT
16**

66 ALLIANCE 264J

MALE CKM 264J 2231510 APRIL 29 2021

BAD LANDS ALLIANCE 14W 1502297

KMK ALLIANCE 6595 I87
BAD LANDS COUNTESS 214M

66 DUCHESS 153D 1930087

COLE CREEK SEVEN SON 1394
SOUTH FORK DUCHESS 213X

AOD	BW	205D	365D	EPDs	CE	BW	WW	YW	MILK
6	87	754	1332		+2.0	+3.3	+59	+105	+16

IT'S THE SERVICE

AFTER the sale that counts!



ALL TIED UP SALE DAY?

NO PROBLEM!

WATCH LIVE & BID ONLINE

DVAuction
www.dvauction.com



**BID ONLINE - BID BY PHONE
OR PLACE AN ORDER**

**Call 66 Ranch or any of our Sale Staff
YOUR SATISFACTION GUARANTEED**



REFERENCE SIRE



66 ALLIANCE 17Z

MALE CKM 17Z 1677098 MARCH 26 2012

BAD LANDS ALLIANCE 14W 1502297

CKM ALLIANCE 6595 I87
BAD LANDS COUNTESS 214M

BAD LANDS GLENELLA 5041R 1270140

LEACHMAN RIGHT TIME
BAD LANDS GLENELLA 247M

EPDs	CE	BW	WW	YW	MILK	MCE
	+0.0	+4.4	+82	+129	+22	+14.0

Plain and simple, 17Z has it all. Performance, ease of flesh, leg structure, super foot, free moving, maternal. We feel we have lucked out and finally raised one that can compete with any A.I. sire. His heifer calves are extremely feminine and by far the top end of the pen. Very moderate birth weights out of 443 calves, 86 lbs. avg. on the bull calves and 77 lbs. avg. on the heifer calves. We find it much easier to have confidence in A.I.'ing to a bull that you know exactly what his sire is and as well his dam. Because they both came from our program.



214U

DAM OF
LOT 17

64A

DAM OF
LOT 18



Average Canadian EPDs for all Black Angus calves born in 2021

EPDs	CE	BW	WW	YW	MILK	MCE
	+3.4	+2.0	+51	+89	+23	+6.6



**LOT
17**

66 ALLIANCE 356J

MALE CKM 356J 2231546 MAY 03 2021

66 ALLIANCE 17Z 1677098

BAD LANDS ALLIANCE 14W
BAD LANDS GLENELLA 5041R

DEER RIVER ZARA 214U 1476840

RITO 1B2 OF RITA 5H11 BANDO
DEER RIVER ZARA 171M

AOD	BW	205D	365D	EPDs	CE	BW	WW	YW	MILK
14	92	793	1279		-1.0	+3.9	+64	+106	+23



**LOT
18**

66 ALLIANCE 385J

MALE CKM 385J 2231556 MAY 04 2021

66 ALLIANCE 17Z 1677098

BAD LANDS ALLIANCE 14W
BAD LANDS GLENELLA 5041R

66 ROSETTE 64A 1750268

APEX WINDY 078
DEER RIVER ROSETTE 695U

AOD	BW	205D	365D	EPDs	CE	BW	WW	YW	MILK
9	80	699	983		+3.0	+2.0	+52	+71	+26

PERFORMANCE DATA

AOD: Age of Dam

BW: Actual Birth Weight

205D: Weaning weight in lbs. adjusted to 205 days

365D: Yearling weight in lbs. adjusted to 365 days

REFERENCE SIRE

F-R 5289 7048E

MALE DMC 7048E 2075671 APRIL 16 2017

CHAPMAN MEMENTO 3607A 1752982

CHAPMAN MEMENTO 0505X
CHAPMAN G PRIDE 8013U

F-R 9156 LASS 5289 2071458

F-R H6 LAD 9156
F-R GD LASS 1265

EPDs	CE	BW	WW	YW	MILK	MCE
	+16.0	-2.7	+28	+41	+27	+12.0

A walking bull purchased from the Fraser's. A sleep all night heifer bull, with a little extra growth in him to put more pounds on your calves in the fall. Bull calves average birthweight is 68 lbs. Heifer calves is 69 lbs.

2 sons sell



Lot 19

**LOT
19**

66 MEMENTO 489J

MALE CKM 489J 2238330 MAY 11 2021

F-R 5289 7048E 2075671

CHAPMAN MEMENTO 3607A
F-R 9156 LASS 5289

66 IDELETTE 66G 2116674

WK BOBCAT
66 IDELETTE 50E

AOD	BW	205D	365D	EPDs	CE	BW	WW	YW	MILK
3	74	611	1040		+13.0	-0.8	+35	+61	+26



66G

DAM OF
LOT 19

BULL MANAGEMENT

We do not believe in pushing our long yearling bulls.
They are all carefully grown into herd sires.



Lot 20

**LOT
20**

66 MEMENTO 336J

MALE CKM 336J 2238298 MAY 02 2021

F-R 5289 7048E 2075671

CHAPMAN MEMENTO 3607A
F-R 9156 LASS 5289

66 ERICA 142G 2112976

66 CEDAR WIND 178C
66 ERICA 195D

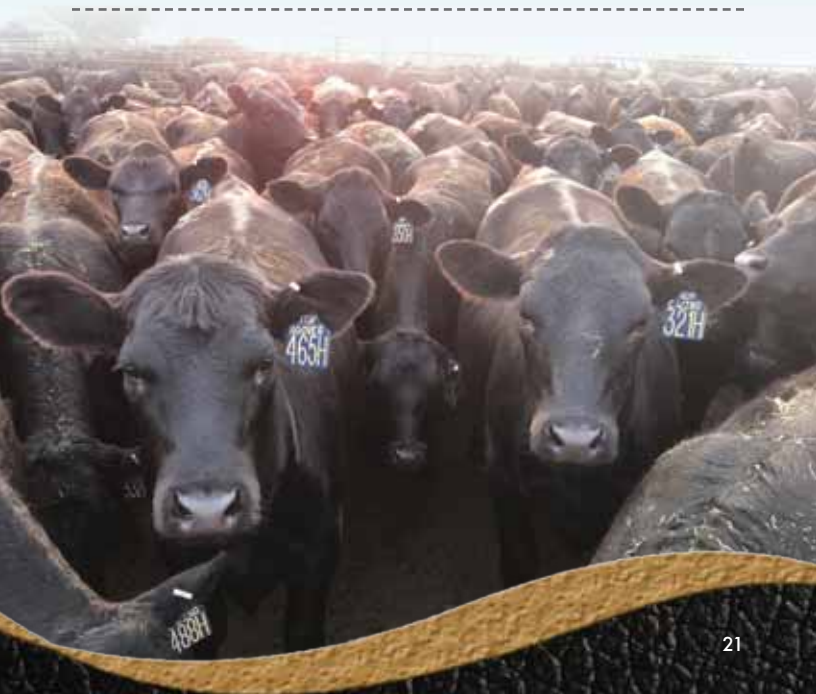
AOD	BW	205D	365D	EPDs	CE	BW	WW	YW	MILK
3	71	665	1095		+12.0	-1.1	+42	+59	+27

142G

DAM OF
LOT 20



BRED FEMALES
SELL IMMEDIATELY
FOLLOWING THE BULLS



REFERENCE SIRE



HF SYNDICATE 213Z

MALE HAMI 213Z 1706210 ET FEBRUARY 04 2012

CONNEALY CONSENSUS 7229 1593730

CONNEALY CONSENSUS DDF
BLUE LILLY OF CONANGA 16

HF MISS BLACKCAP 27R 1274292

TC FREEDOM 104
HF MISS BLACKCAP 50N

EPDs	CE	BW	WW	YW	MILK	MCE
	+14.0	-1.4	+39	+72	+28	+11.0

An A.I. sire we selected for his calving ease and to use for his proven ability to sire the females we are all striving to build. Real good haired cattle, moderate frame, great foot and phenotypically as pretty as they come. Bull calves average birthweight is 78 lbs. Heifer calves is 73 lbs.



LOT
21

66 SYNDICATE 316J

MALE CKM 316J 2231532 MAY 01 2021

HF SYNDICATE 213Z 1706210

CONNEALY CONSENSUS 7229
HF MISS BLACKCAP 27R

66 BLACKLASS 183D 1930117

COLE CREEK BLACK CEDAR 46P
SOUTH FORK BLACKLASS 72Z

AOD	BW	205D	365D	EPDs	CE	BW	WW	YW	MILK
6	94	725	1111		+1.0	+3.5	+46	+80	+24

NO BULLS HAVE BEEN SOLD PRIOR TO THE SALE



**LOT
22**

66 SYNDICATE 453J

MALE CKM 453J 2231587 MAY 08 2021

HF SYNDICATE 213Z 1706210

CONNEALY CONSENSUS 7229
HF MISS BLACKCAP 27R

66 BLACKBIRD 332G 2125184

66 ALLIANCE 17Z
66 BLACKBIRD 237A

AOD	BW	205D	365D	EPDs	CE	BW	WW	YW	MILK
3	77	665	1087		+7.0	+1.0	+49	+79	+25

COME FOR THE CATTLE
STAY FOR THE STEAK!



**LOT
23**

66 SYNDICATE 257J

MALE CKM 257J 2231506 APRIL 29 2021

HF SYNDICATE 213Z 1706210

CONNEALY CONSENSUS 7229
HF MISS BLACKCAP 27R

66 COUNTESS 248G 2125147

66 ALLIANCE 17Z
66 COUNTESS 494A

AOD	BW	205D	365D	EPDs	CE	BW	WW	YW	MILK
3	74	570	1044		+10.0	+0.4	+43	+75	+22

248G

DAM OF
LOT 23





Lot 24

LOT
24

66 SYNDICATE 272J

MALE CKM 272J 2231516 APRIL 29 2021

HF SYNDICATE 213Z 1706210

CONNEALY CONSENSUS 7229
HF MISS BLACKCAP 27R

66 ERICA 427B 1814316

MF NET RETURN 8197
BAD LANDS ERICA 22K

AOD	BW	205D	365D	EPDs	CE	BW	WW	YW	MILK
8	97	694	1228		+1.0	+3.9	+45	+84	+24



427B

DAM OF
LOT 24

REFERENCE SIRE

BURNETT CHISUM 21G

MALE BBW 21G 2127240 FEBRUARY 12 2019

2 sons sell

S CHISUM 255 2013657

S CHISUM 6175
S BLOSSOM 0278

BURNETT LOUISE 36E 2127239

BURNETT LINKSTEAD 15B
BURNETT LOUISE 27C

EPDs	CE	BW	WW	YW	MILK	MCE
	+1.0	+3.6	+61	+82	+22	+4.0



80X

DAM OF
LOT 26

122F
DAM OF
LOT 25



Lot 25

**LOT
25**

66 CHISUM 433J

MALE CKM 433J 2238313 MAY 07 2021

BURNETT CHISUM 21G 2127240

S CHISUM 255
BURNETT LOUISE 36E

66 BARBARA 122F 2058497

F-R ATHABASCA 5051
66 BARBARA 218D

AOD	BW	205D	365D	EPDs	CE	BW	WW	YW	MILK
4	81	703	1129		+4.0	+1.8	+45	+63	+21



Lot 26

**LOT
26**

66 CHISUM 381J

MALE CKM 381J 2231553 MAY 04 2021

BURNETT CHISUM 21G 2127240

S CHISUM 255
BURNETT LOUISE 36E

BAD LANDS COUNTESS 80X 1555696

LEACHMAN RIGHT TIME
BAD LANDS COUNTESS 214M

AOD	BW	205D	365D	EPDs	CE	BW	WW	YW	MILK
12	92	775			-1.0	+3.8	+56	+81	+24

REFERENCE SIRE



1 son sells

BROOKING FIREBRAND 6068

MALE JSTN 68D 1906246 JANUARY 31 2016

BROOKING BANK NOTE 4040 1776488

CONNEALY EARNAN 076E
E A ROSE 918

BROOKING ANNIE K 390 1764389

S A V BEST INTEREST 0136
SOO LINE ANNIE K 9165

EPDs	CE	BW	WW	YW	MILK	MCE
	+1.0	+3.3	+62	+99	+25	+7.0

An A.I. sire chosen because of his perfect foot. Not to mention Firebrand's dam is picture perfect. Deep, thick, pretty headed along with a picture perfect udder. Very exceptional phenotype to these Firebrand bred cattle.



Lot 27

LOT
27

66 FIREBRAND 471J

MALE CKM 471J 2231594 MAY 09 2021

BROOKING FIREBRAND 6068 1906246

BROOKING BANK NOTE 4040
BROOKING ANNIE K 390

66 PRINCESS 3084A 1755572

COLE CREEK CEDAR RIDGE 1V
BAD LANDS PRINCESS 1035Y

AOD	BW	205D	365D	EPDs	CE	BW	WW	YW	MILK
9	94	705	1055		+0.0	+3.2	+45	+67	+27



3084A

DAM OF
LOT 27

REFERENCE SIRE

66 PAYWEIGHT 134G

MALE CKM 134G 2116948 APRIL 21 2019

1 son sells

BASIN PAYWEIGHT 1682 2010588

BASIN PAYWEIGHT 006S
21AR O LASS 7017

SOUTH FORK IDELETTE 437Z 1677465

BAD LANDS FORTE 327X
DEER RIVER IDELETTE 185W

EPDs	CE	BW	WW	YW	MILK	MCE
	+4.0	+1.8	+38	+71	+18	+10.0



Lot 28

LOT
28

66 PAYWEIGHT 427J

MALE CKM 427J 2236564 MAY 06 2021

66 PAYWEIGHT 134G 2116948

BASIN PAYWEIGHT 1682
SOUTH FORK IDELETTE 437Z

66 PRINCESS 197E 1997252

COLE CREEK CEDAR RIDGE 181
66 PRINCESS 491A

AOD	BW	205D	365D	EPDs	CE	BW	WW	YW	MILK
5	79	704	1119		+7.0	+0.5	+36	+66	+18



Feet photos of sale bulls
available with the online videos
at 66RANCHLTD.COM
& DVAUCTION.COM

DO YOU CARE ABOUT THE COW
THAT RAISED YOUR BULL?
'CAUSE WE SURE DO!

REFERENCE SIRE

66 CHISM 48G

MALE CKM 48G 2116722 APRIL 16 2019

66 CHISM 1D 1929946

STUART CHISM 82A
66 DUCHESS 249A

66 ROSEBUD 43B 1819716

66 ALLIANCE 17Z
SOUTH FORK ROSEBUD 153X

EPDs	CE	BW	WW	YW	MILK	MCE
	+11.0	-0.8	+48	+71	+13	+16.0

A walking bull at the ranch raised by us, a "1D" son. 1D has quickly risen to the top at our place. Raising sons like 48G that are just the right type. Both 1D and 48G stamp their calves the same. Deep, soggy, soft made, moderate, easy to look at Angus cattle. Foot quality is very strong, udders on our milking daughters have been absolutely outstanding! 48G's dam is about as good as they come, expect females out of the 48G sons to remain in the herd for a long time. Bull calves average birthweight is 78 lbs. Heifer calves is 72 lbs.

1 son sells

ALL BULLS SEMEN TESTED



Lot 29

**LOT
29**

66 CHISM 434J

MALE CKM 434J 2238314 MAY 07 2021

66 CHISM 48G 2116722

66 CHISM 1D
66 ROSEBUD 43B

66 BLACKBIRD 665F 2058749

66 ALLIANCE 217C
66 BLACKBIRD 48C

AOD	BW	205D	365D	EPDs	CE	BW	WW	YW	MILK
4	73	669	1087		+10.0	-0.7	+47	+67	+17



665F

DAM OF
LOT 29

REFERENCE SIRE



1 son sells

66 CHISM 1D

MALE CKM 1D 1929946 APRIL 03 2016

STUART CHISM 82A 1736988

S CHISUM 6175 †
STUART MISS ROSE 22U

66 DUCHESS 249A 1738898

BAD LANDS DAQUANTAE 26L
BAD LANDS DUCHESS 9025W

EPDs	CE	BW	WW	YW	MILK	MCE
	+5.0	+2.0	+78	+116	+6	+13.0

A walking bull raised at 66 Ranch. What a fortunate thing happening to us with this bull! He checks all the boxes, very moderate birth, great performance, and awesome looking female progeny, great scrotal, feet are superb, natural ease of flesh. We are very, very high on these 1D bred progeny. The rancher's kind of cattle out of this bull! Bull calves average birthweight is 82 lbs. Heifer calves is 77 lbs.



563C

DAM OF
LOT 30

LOT
30

66 CHISM 447J

MALE CKM 447J 2231585 MAY 07 2021

66 CHISM 1D 1929946

STUART CHISM 82A
66 DUCHESS 249A

66 BLACKBIRD 563C 1867587

BAD LANDS FINAL ANSWER 107W
BAD LANDS BLACKBIRD 164X

AOD	BW	205D	365D	EPDs	CE	BW	WW	YW	MILK
7	84	613	997		+3.0	+1.9	+53	+75	+6

WE ASK . . .

That all Bulls & Females
be taken home right after the sale

REFERENCE SIRE



S A V RESOURCE 1441

MALE IMP 1441Y 1707295 JANUARY 07 2011

RITO 707 OF IDEAL 3407 7075 2069908

R R RITO 707
IDEAL 3407 OF 1418 076

S A V BLACKCAP MAY 4136 14739095

S A V 8180 TRAVELER 004
S A V MAY 2397

EPDs	CE	BW	WW	YW	MILK	MCE
	+2.0	+4.0	+69	+131	+17	+0.0

We've seen Resource at Genex in Billings. Very moderate, extra rib x2 with a super heel. We saw him in collection and were told you do not have to worry about libido; he's very easy to collect. We are really looking forward to more Resource progeny, females have been perfect uddered. If there is a flaw in Resource progeny we haven't found it yet.



LOT
31

66 RESOURCE 327J

MALE CKM 327J 2231536 MAY 01 2021

S A V RESOURCE 1441 1707295

RITO 707 OF IDEAL 3407 7075
S A V BLACKCAP MAY 4136 CAF

66 COUNTESS 338E 1997378

COLE CREEK BLACK CEDAR 46P
SOUTH FORK COUNTESS 121Z

AOD	BW	205D	365D	EPDs	CE	BW	WW	YW	MILK
5	81	681	1184		+5.0	+1.9	+55	+103	+19



338E

DAM OF
LOT 31



Lot 32

**LOT
32**

66 RESOURCE 419J

MALE CKM 419J 2231572 MAY 06 2021

S A V RESOURCE 1441 1707295

RITO 707 OF IDEAL 3407 7075
S A V BLACKCAP MAY 4136 CAF

66 BLACKBIRD 140A 1738815

BAD LANDS FORTE 406X
SOUTH FORK BLACKBIRD 48X

AOD	BW	205D	365D	EPDs	CE	BW	WW	YW	MILK
9	91	743	1296		+2.0	+3.6	+59	+112	+21

CHECK OUR WEBSITE FOR SALE UPDATES

WWW.66RANCLTD.COM



Lot 33

**LOT
33**

66 RESOURCE 481J

MALE CKM 481J 2231597 MAY 10 2021

S A V RESOURCE 1441 1707295

RITO 707 OF IDEAL 3407 7075
S A V BLACKCAP MAY 4136

66 RIBBON 6080D 1930323

SCHIEFELBEIN EFFECTIVE 61
BAD LANDS RIBBON 79X

AOD	BW	205D	365D	EPDs	CE	BW	WW	YW	MILK
6	86	668	1170		+5.0	+2.5	+56	+103	+18

6080D

DAM OF
LOT 33





Lot 34

**LOT
34**

66 RESOURCE 341J

MALE CKM 341J 2231539 MAY 02 2021

S A V RESOURCE 1441 1707295

RITO 707 OF IDEAL 3407 7075

S A V BLACKCAP MAY 4136

66 MISS BURGESS 365E 1997403

V D A R CEDAR WIND 8111

66 MISS BURGESS 477C

AOD	BW	205D	365D	EPDs	CE	BW	WW	YW	MILK
5	96	713	1136		-1.0	+4.5	+56	+103	+20



365E

DAM OF
LOT 34



Lot 35

**LOT
35**

66 RESOURCE 368J

MALE CKM 368J 2231551 MAY 03 2021

S A V RESOURCE 1441 1707295

RITO 707 OF IDEAL 3407 7075

S A V BLACKCAP MAY 4136

66 DUCHESS 95E 1997156

66 ALLIANCE 17Z

SOUTH FORK DUCHESS 16X

AOD	BW	205D	365D	EPDs	CE	BW	WW	YW	MILK
5	82	658	1054		+3.0	+2.6	+50	+87	+19



**LOT
36**

66 RESOURCE 266J

MALE CKM 266J 2231511 APRIL 29 2021

S A V RESOURCE 1441 1707295

RITO 707 OF IDEAL 3407 7075
S A V BLACKCAP MAY 4136

66 ERICA 50A 1738745

BAD LANDS FORTE 406X
BAD LANDS ERICA 86X

AOD	BW	205D	365D	EPDs	CE	BW	WW	YW	MILK
9	76	588	962		+8.0	+0.1	+34	+63	+18

50A

DAM OF
LOT 36



LOOKING FOR LONGEVITY?

A cow at 66 Ranch is under great scrutiny from her first calf and continuing on her entire life at our place. If they show any imperfections with feet, udder or disposition they are culled right there on the spot. Any cow 4 or 5 or 6 has been scrutinized pretty thoroughly. So with that being said, we are pretty proud to have almost 1/3 of the cows that raised bulls in this sale being 7 years old and older - up to 14 years of age!



REFERENCE SIRE



1 son sells

BROOKING REAL ESTATE 6072

MALE JSTN 72D 1926673 ET FEBRUARY 01 2016

CONNEALY EARNAN 076E 1767036

CONNEALY CONSENSUS
BRAZILA OF CONANGA 3991 839A

SOO LINE ROSE 1019 1605797

SOO LINE MOTIVE 9016
E A ROSE 918

EPDs	CE	BW	WW	YW	MILK	MCE
	+10.0	-0.6	+62	+117	+34	+5.0

An A.I. sire we chose to use for his calving ease on our 1st calf heifers. And the female side is so exciting! We have been through Bar EL Angus cow herd a couple times, the impeccable udders Real Estate puts under his females is absolutely outstanding. Keep all the heifer calves! Bull calves average birthweight is 82 lbs. Heifer calves is 76 lbs.



Lot 37

LOT
37

66 REAL ESTATE 474J

MALE CKM 474J 2231595 MAY 09 2021

BROOKING REAL ESTATE 6072 1926673

CONNEALY EARNAN 076E
SOO LINE ROSE 1019

BAD LANDS GEORGINA 1111Y 1615388

LOOKOUT CANUCK 65U
BAD LANDS GEORGINA 221M

AOD	BW	205D	365D	EPDs	CE	BW	WW	YW	MILK
11	78	683	1026		+0.0	+1.3	+43	+65	+22



1111Y

DAM OF
LOT 37

REFERENCE SIRE



1 son sells

HOOVER COUNSELOR N29

MALE IMP 29B 2138143 ET JANUARY 08 2014

CONNEALY COUNSELOR 1714725

CONNEALY MENTOR 7374
JAZE OF CONANGA 234

ERICA OF ELLSTON G366 16123322

SYDGEN C C & 7
ERICA OF ELLSTON D184

EPDs	CE	BW	WW	YW	MILK	MCE
	+10.0	-0.6	+62	+117	+34	+5.0

An A.I. sire selected for his strong maternal characteristics. His dam G366 according to Landi at Hoover Angus says quote: "likely the best cow that has ever been bred, born, and raised here in our 92 year history." There is a lot said in that statement considering the exceptional cow herd that Hoover Angus is so well known for! You will keep all the daughters. This sire adds that ease of flesh we are all looking for.



Lot 38

LOT
38

66 COUNSELOR 20J

MALE CKM 20J 2231426 APRIL 16 2021

HOOVER COUNSELOR N29 2138143

CONNEALY COUNSELOR
ERICA OF ELLSTON G366

66 BLACKBIRD 53C 1867113

66 ALLIANCE 17Z
SOUTH FORK BLACKBIRD 361Z

AOD	BW	205D	365D	EPDs	CE	BW	WW	YW	MILK
7	76	618	1141		+8.0	+0.3	+53	+101	+27

53C

DAM OF
LOT 38



REFERENCE SIRE

BURNETT CANYON 40G

MALE BBW 40G 2131221 FEBRUARY 28 2019

BURNETT DIESEL 42D 1947780

SOO LINE MOTIVE 9016
BURNETT BLACK LADY 55A

BURNETT CANYON 44E 2010898

STEVENSON ROCKMOUNT RX933
BURNETT CANYON 15C

EPDs	CE	BW	WW	YW	MILK	MCE
	+1.0	+2.8	+45	+80	+23	-1.0

A walking bull purchased from Burnett Angus. As we have come to know with 40G, his progeny should have high libido. 40G is a high fertile, breeding machine! Every time you are in a breeding pasture with him in it he is chasing a cow around, even if there is no cows showing heat he is still pursuing one, my kind of bull! Bull calves average birthweight is 77 lbs. Heifer calves is 78 lbs.

2 sons sell



Lot 39

LOT 39

66 CANYON 86J

MALE CKM 86J 2238424 APRIL 21 2021

BURNETT CANYON 40G 2131221

BURNETT DIESEL 42D
BURNETT CANYON 44E

66 BARBARA 544F 2058712

STUART CHISM 82A
66 BARBARA 494C

AOD	BW	205D	365D	EPDs	CE	BW	WW	YW	MILK
4	74	654	1046		+7.0	+0.6	+43	+66	+16



544F

DAM OF
LOT 39

SAVE ON FUEL!

VIEW VIDEO & FEET PHOTOS ONLINE
@ 66RANCHLTD.COM / DVAUCTION.COM



Lot 40

**LOT
40**

66 CANYON 486J

MALE CKM 486J 2248073 MAY 10 2021

BURNETT CANYON 40G 2131221

BURNETT DIESEL 42D
BURNETT CANYON 44E

66 DUCHESS 503F 2070215

COLE CREEK 7 BLACK 375
66 DUCHESS 216A

AOD	BW	205D	365D	EPDs	CE	BW	WW	YW	MILK
4	80	733	1178		+6.0	+1.3	+46	+75	+24



503F

DAM OF
LOT 40



REFERENCE SIRE



1 son sells

V D A R CEDAR WIND 8111

MALE IMP 8111Y 1751551 JANUARY 06 2011

COLE CREEK CEDAR RIDGE 1V 1659099

COLE CREEK BLACK CEDAR 46P
COLE CREEK CLOVANADA 49S

V D A R CHLOE 9727 16434284

V D A R REALLY WINDY 4097
V D A R CHLOE 6320

EPDs	CE	BW	WW	YW	MILK	MCE
	+12.0	-1.3	+48	+81	+29	+12.0

An A.I. heifer bull we used from Cole Creek bloodlines. Extreme docility with a very moderate birth weight and has excellent performance. We ourselves are very pleased with the growth of these cattle after they were weaned. Competing very well with all the other performance sires. Once again, going back to Cedar Ridge these cattle are displaying that natural ease of flesh. The real "cow man's" kind of cattle! Excellent females sired by Cedar Wind with superb udders.

EPDs in this catalog are as of Nov. 1/22



Lot 41

LOT
41

66 CEDAR WIND 100J

MALE CKM 100J 2231453 APRIL 21 2021

V D A R CEDAR WIND 8111 1751551

COLE CREEK CEDAR RIDGE 1V
V D A R CHLOE 9727

66 BLACKBIRD 465G 2129279

HOOVER DAM
66 BLACKBIRD 541A

AOD	BW	205D	365D	EPDs	CE	BW	WW	YW	MILK
3	83	622	1101		+6.0	+1.4	+47	+86	+24

REFERENCE SIRE

F-R 5099 8096F

MALE DMC 8096F 2130854 APRIL 28 2018

3 sons sell

F-R 0250 3349 1830089

F-R 258 LAD 0250
F-R 60B LASS 5084

F-R 332 LASS 5099 2014156

XO CROWFOOT ENCORE 332A
F-R 8203 LASS 3153

EPDs	CE	BW	WW	YW	MILK	MCE
	+15.0	-4.2	+36	+43	+21	+13.0



Lot 42

LOT
42

66 LAD 452J

MALE CKM 452J 2238321 MAY 08 2021

F-R 5099 8096F 2130854

F-R 0250 3349
F-R 332 LASS 5099

66 GEORGINA 50G 2116672

CONNEALY THUNDER
BAD LANDS GEORGINA 1111Y

AOD	BW	205D	365D	EPDs	CE	BW	WW	YW	MILK
3	72	555	1008		+10.0	-1.7	+34	+49	+20



Lot 43

LOT
43

66 LAD 451J

MALE CKM 451J 2238320 MAY 08 2021

F-R 5099 8096F 2130854

F-R 0250 3349
F-R 332 LASS 5099

66 COUNTESS 32G 2112958

66 CHISM 1D
66 COUNTESS 204D

AOD	BW	205D	365D	EPDs	CE	BW	WW	YW	MILK
3	65	653	1050		+11.0	-2.1	+52	+70	+20

32G
DAM OF
LOT 43



CALVING EASE BULLS: **BW IN BOLD**



**LOT
44**

66 LAD 431J

MALE CKM 431J 2238312 MAY 06 2021

F-R 5099 8096F 2130854

F-R 0250 3349
F-R 332 LASS 5099

66 COUNTESS 536G 2113013

66 CEDAR WIND 178C
66 COUNTESS 639D

AOD	BW	205D	365D	EPDs	CE	BW	WW	YW	MILK
3	70	610	1012		+10.0	-0.8	+41	+54	+21



536G
DAM OF
LOT 44

- SIGHT UNSEEN PURCHASES -
YOUR SATISFACTION
GUARANTEED

Contact 66 Ranch Ltd. or any of our Sales Staff

REFERENCE SIRE



V D A R REALLY WINDY 4097

MALE IMP 4097T 1748115 JANUARY 05 2007

A A R REALLY WINDY 1205 1036963

A A R WINDY RIDGE 362
A A R LADY KELTON 2170

VDAR BLACKBIRD 2031 14108834

VDAR ENTERPRISE 2059
VDAR ENVIOUS BLACKBIRD 6060

EPDs	CE	BW	WW	YW	MILK	MCE
	+15.0	-1.3	+54	+89	+8	+11.0

An A.I. sire we have used in the past. We went back to using 4097 semen again because of the strength of the aged daughters that are in our herd. Real strong udders on the 4097 daughters. He is an excellent calving ease bull, we use him exclusively on our first calf heifers. Bull calves average birthweight is 75 lbs. Heifer calves is 69 lbs.



LOT
45

66 REALLY WINDY 432J

MALE CKM 432J 2231578 MAY 07 2021

V D A R REALLY WINDY 4097 1748115

A A R REALLY WINDY 1205
VDAR BLACKBIRD 2031

66 LASSIE 418G 2129281

F-R ATHABASCA 5051
66 LASSIE 219E

AOD	BW	205D	365D	EPDs	CE	BW	WW	YW	MILK
3	70	605	1092		+13.0	-1.2	+45	+73	+12

418G

DAM OF
LOT 45



REFERENCE SIRE



2 sons sell

BUFORD REBOUND C837

MALE IMP 837C 2113711 ET NOVEMBER 11 2015

S A V RENOWN 3439 1887276

RITO 707 OF IDEAL 3407 7075

S A V BLACKCAP MAY 4136

BUFORD ELBA 811Y 17266488

S A V BISMARCK 5682

S A V ELBA 4436

EPDs	CE	BW	WW	YW	MILK	MCE
	+3.0	+2.1	+75	+136	+15	+6.0

An A.I. sire selected for calving ease, performance and maternal strength. Rebound is a Renown son out of a Bismarck dam. He should give us cattle with strong foot structure, heavy steer calves and females that will go to the replacement pen. Bull calves average birthweight is 80 lbs. Heifer calves is 79 lbs.



Lot 46

LOT
46

66 REBOUND 459J

MALE CKM 459J 2231590 MAY 08 2021

BUFORD REBOUND C837 2113711

S A V RENOWN 3439

BUFORD ELBA 811Y

66 BARBARA 156B 1805820

CONNELLY CONSENSUS 7229

DEER RIVER BARBARA 51U

AOD	BW	205D	365D	EPDs	CE	BW	WW	YW	MILK
8	86	729	1177		+3.0	+2.5	+60	+105	+17



156B

DAM OF
LOT 46



**LOT
47**

66 REBOUND 261J

MALE CKM 261J 2231507 TWIN APRIL 29 2021

BUFORD REBOUND C837 2113711

S A V RENOWN 3439
BUFORD ELBA 811Y

66 HAPPENINGS 6001D 1935968

SOUTH FORK DESIRE 214Y
66 HAPPENINGS 382A

AOD	BW	205D	365D	EPDs	CE	BW	WW	YW	MILK
6	67	489	959		+8.0	+0.5	+52	+95	+17



Not everything at 66 Ranch is ALL black!

BULL & FEMALE VIEWING

We welcome you to view the bulls
before the sale at 66 Ranch

Available for viewing at Bow Slope on
Tuesday, December 13

Updated weights & measurements available Sale Day



REFERENCE SIRE



1 son sells

WERNER FLAT TOP 4136

MALE IMP 4136B 2013654 SEPTEMBER 07 2014

CONNEALY BLACK GRANITE 17028963

CONNEALY CONSENSUS 7229
EURA ELGA OF CONANGA 9109

WERNER LADY 0304 16919376

C R A BEXTOR 872 5205 608
SANDPOINT LADY 7869

EPDs	CE	BW	WW	YW	MILK	MCE
	+16.0	-1.9	+55	+113	+37	+11.0

An A.I. sire we chose to use for moderate birth weight and the added performance once the calves are on the ground. A pedigree stacked with excellent females, should give you the females that we are all striving to produce.



Lot 48

LOT
48

66 FLAT TOP 477J

MALE CKM 477J 2231596 MAY 10 2021

WERNER FLAT TOP 4136 2013654

CONNEALY BLACK GRANITE
WERNER LADY 0304

66 PRIDE 272F 2058579

S A V RESOURCE 1441
BAD LANDS PRIDE 118X

AOD	BW	205D	365D	EPDs	CE	BW	WW	YW	MILK
4	71	636	1100		+12.0	-0.5	+41	+82	+26



272F

DAM OF
LOT 48

REFERENCE SIRE



1 son sells

HOOVER CUT ABOVE P427

MALE IMP 0427C 2245633 AUGUST 17 2015

BRUNS TOP CUT 373 17680548

BRUNS UPPERCUT 610
DAKOTA MISS 669 BAF

ERICA OF ELLSTON L5 17312733

CONNELY COUNSELOR
ERICA OF ELLSTON G366

EPDs	CE	BW	WW	YW	MILK	MCE
	+13.0	-2.3	+49	+96	+39	+12.0

An A.I. sire we chose to use for super calving ease on our heifers and he calved great! The other exciting thing is the daughters that he will leave behind. At Hoover Angus they are showing superior udder quality, easy fleshing ability and deep ribbed, broody, milky females. Bull calves average birthweight is 77 lbs. Heifer calves is 65 lbs.



Lot 49

LOT
49

66 CUT ABOVE 290J

MALE CKM 290J 2245669 APRIL 30 2021

HOOVER CUT ABOVE P427 2245633

BRUNS TOP CUT 373
ERICA OF ELLSTON L5

66 MERLE 389G 2129258

SOUTH FORK CONVERGENCE 217Y
66 MERLE 269B

AOD	BW	205D	365D	EPDs	CE	BW	WW	YW	MILK
3	84	582	1044		+6.0	+2.0	+53	+98	+28

389G

DAM OF
LOT 49



REFERENCE SIRE

COLE CREEK LIL SEAL 1166

MALE IMP 1166D 1963220 MARCH 03 2016

COLE CREEK BLACK SEAL 1132 17329120

COLE CREEK BLACK SEAL 230
COLE CREEK 104 JUANADA 35V

COLE CREEK EILEEN PRIDE 72 17329115

COLE CREEK JUANADA GOLD 92P
COLE CREEK EILEEN PRIDE 99U

EPDs	CE	BW	WW	YW	MILK	MCE
	-1.0	+3.4	+40	+63	+25	+1.0

A walking bull purchased from Cole Creek Angus. Excellent fleshing ability displayed year round. 1166D also has a super foot udder him.

1 son sells



LOT 50

66 LIL SEAL 472J

MALE CKM 472J 2238324 MAY 09 2021

COLE CREEK LIL SEAL 1166 1963220

COLE CREEK BLACK SEAL 1132
COLE CREEK EILEEN PRIDE 72

66 DUCHESS 114E 1997169

V D A R CEDAR WIND 8111
66 DUCHESS 441C

AOD	BW	205D	365D	EPDs	CE	BW	WW	YW	MILK
5	75	739	1099		+7.0	+0.3	+42	+64	+27



STAND BY THE MAPLE LEAF, EH!

REFERENCE SIRE

BULL'S EYE COMMAND 78F

MALE BLC 78F 2056624 APRIL 12 2018

BALDRIDGE COMMAND C036 2038043

EF COMMANDO 1366
BALDRIDGE BLACKBIRD A030

DEER RIVER IDELETTE 137N 1174776

DEER RIVER TRAVELER 132F
DEER RIVER IDELETTE 139H

EPDs	CE	BW	WW	YW	MILK	MCE
	+8.0	+0.4	+42	+65	+21	+11.0

A walking bull purchased from C & L Beasley Cattle. We selected this calving ease bull for his strong maternal presence, his dam at 17 years old still had a perfect udder and perfect feet. The feet were definitely passed on to her son, we knew we had to own 78F when we seen him standing on the concrete, a perfect foot under this bull! We used him exclusively on first calf heifers, he is a "heifer bull." Bull calves average birthweight is 77 lbs. Heifer calves is 70 lbs.

1 son sells



Lot 51

LOT 51

66 COMMAND 391J

MALE CKM 391J 2236320 MAY 04 2021

BULL'S EYE COMMAND 78F 2056624

BALDRIDGE COMMAND C036
DEER RIVER IDELETTE 137N

66 ERICA 152G 2116705

BASIN PAYWEIGHT 1682
66 ERICA 85B

AOD	BW	205D	365D	EPDs	CE	BW	WW	YW	MILK
3	74	646	1053		+8.0	+0.1	+48	+75	+24

152G

DAM OF
LOT 51



AOD = AGE OF DAM



BID LIVE ONLINE

Create your Bidding Account with DVAuction!

Go to www.dvauction.com and click on "Create New Account".

Fill in all fields and accept the Privacy Policy & Terms and Conditions.

Click on Create New Account.

On the next screen, click Apply for Bidding.

Choose Option 1) Credit Card Approval or Option 2) Bank Approval

** if you are not comfortable providing this info to DVAuction, that is ok!*

Call Sarah Hasson at 306-681-5340.

Check your Email for an Account Activation message from DVAuction.

Click this link and you are all ready to go.

On sale day, log in to www.dvauction.com with your email address and password.

Click the green "View" button beside the 66 Ranch Ltd. 9th Annual Fall Bull Sale. This will take you to the sale site.

Accept the Terms & Conditions (left side of screen) to get your bid button.

Log in 1 hour before sale time to Practice Bid.

LET US MAKE IT EVEN EASIER FOR YOU!

Contact Sarah Hasson

at 306-681-5340 to get set up by phone

DVAuction Tech Support 402-316-5460

PLEASE JOIN US AFTER THE SALE

**FOR AN ANGUS STEAK AND
A LITTLE "COUNTRY HOSPITALITY"**



FEMALES SELL IMMEDIATELY FOLLOWING THE BULLS

ALL FEMALES BRED TO BLACK ANGUS
BULLS & PREG CHECKED SAFE

COMMERCIAL 2ND CALVERS

LOT
52

15 FANCY COMMERCIAL 2ND CALVERS - NVB
BULL EXPOSED JULY 14TH. EXPOSED FOR 40 DAYS.

LOT
53

15 FANCY COMMERCIAL 2ND CALVERS - NVB
BULL EXPOSED JULY 14TH. EXPOSED FOR 40 DAYS.

LOT
54

10 FANCY COMMERCIAL 2ND CALVERS - NVB
BULL EXPOSED JULY 14TH. EXPOSED FOR 40 DAYS.

LOT
55

15 FANCY COMMERCIAL 2ND CALVERS - NVB
BULL EXPOSED JULY 14TH. EXPOSED FOR 40 DAYS.

LOT
56

10 FANCY COMMERCIAL 2ND CALVERS - NVB
BULL EXPOSED JULY 14TH. EXPOSED FOR 40 DAYS.

SALE DAY PHONES

AUCTION MART 403-362-5521

KELSEY'S CELL 403-362-0672

MALISSA'S CELL 403-501-9358



PUREBRED BRED HEIFERS

LOT
57

15 REGISTERED 66 RANCH BLACK ANGUS
BRED HEIFERS - SELLING AS COMMERCIAL HEIFERS
A.I. STARTING JULY 10TH - 21 DAYS, BULL EXPOSED - 21 DAYS

LOT
58

15 REGISTERED 66 RANCH BLACK ANGUS
BRED HEIFERS - SELLING AS COMMERCIAL HEIFERS
A.I. STARTING JULY 10TH - 21 DAYS, BULL EXPOSED - 21 DAYS

LOT
59

12 REGISTERED 66 RANCH BLACK ANGUS
BRED HEIFERS - SELLING AS COMMERCIAL HEIFERS
A.I. STARTING JULY 10TH - 21 DAYS, BULL EXPOSED - 21 DAYS

LOT
60

10 REGISTERED 66 RANCH BLACK ANGUS
BRED HEIFERS - SELLING AS COMMERCIAL HEIFERS
A.I. STARTING JULY 10TH - 21 DAYS, BULL EXPOSED - 21 DAYS



THANK YOU
TO JON LATRACE TRUCKING
The Latrace Family



COMMERCIAL BRED HEIFERS

LOT
61

20 VERY FANCY 66 RANCH
COMMERCIAL BRED HEIFERS - NVB
BULL EXPOSED JULY 10TH - EXPOSED FOR 42 DAYS

LOT
62

20 VERY FANCY 66 RANCH
COMMERCIAL BRED HEIFERS - NVB
BULL EXPOSED JULY 10TH - EXPOSED FOR 42 DAYS

LOT
63

20 VERY FANCY 66 RANCH
COMMERCIAL BRED HEIFERS - NVB
BULL EXPOSED JULY 10TH - EXPOSED FOR 42 DAYS

LOT
64

20 VERY FANCY 66 RANCH
COMMERCIAL BRED HEIFERS - NVB
BULL EXPOSED JULY 10TH - EXPOSED FOR 42 DAYS

LOT
65

15 VERY FANCY 66 RANCH
COMMERCIAL BRED HEIFERS - NVB
BULL EXPOSED JULY 10TH - EXPOSED FOR 42 DAYS

LOT
66

15 VERY FANCY 66 RANCH
COMMERCIAL BRED HEIFERS - NVB
BULL EXPOSED JULY 10TH - EXPOSED FOR 42 DAYS

LOT
67

15 VERY FANCY 66 RANCH
COMMERCIAL BRED HEIFERS - NVB
BULL EXPOSED JULY 10TH - EXPOSED FOR 42 DAYS

LOT
68

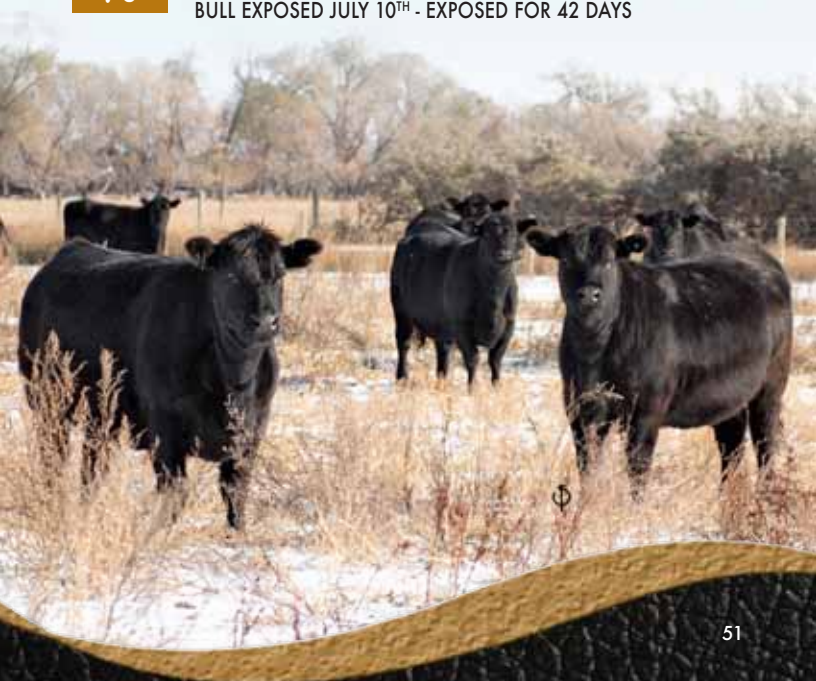
15 VERY FANCY 66 RANCH
COMMERCIAL BRED HEIFERS - NVB
BULL EXPOSED JULY 10TH - EXPOSED FOR 42 DAYS

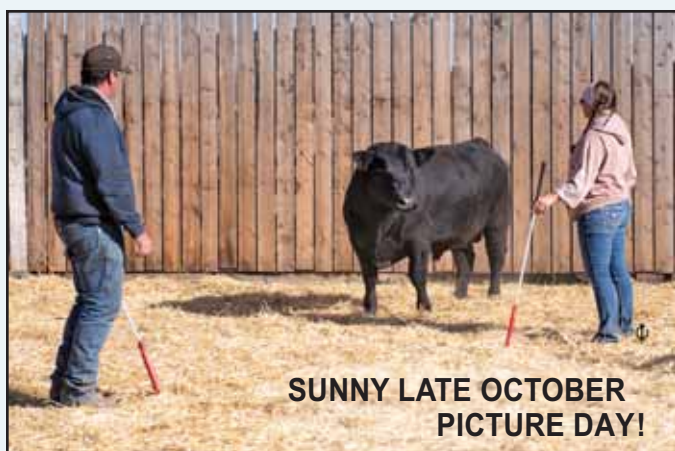
LOT
69

10 VERY FANCY 66 RANCH
COMMERCIAL BRED HEIFERS - NVB
BULL EXPOSED JULY 10TH - EXPOSED FOR 42 DAYS

LOT
70

10 VERY FANCY 66 RANCH
COMMERCIAL BRED HEIFERS - NVB
BULL EXPOSED JULY 10TH - EXPOSED FOR 42 DAYS





**SUNNY LATE OCTOBER
PICTURE DAY!**

Thank You

Sarah Hasson

at Golden Thread Livestock Images for doing such an amazing job of taking the pictures and videos of the bulls

Rose Currie – for cleaning up the bulls

& Jan Lee – for designing the catalog

NEXT 66 RANCH LTD. SALE

12th Annual

SPRING BULL SALE

Thursday, April 20, 2023

Bow Slope Shipping Association, Brooks, AB

8th Annual

66 RANCH PAIR SALE

Friday, May 12, 2023

Bow Slope Shipping Association, Brooks, AB



Thanks for the support!

We want to thank our customers and all who participated in our last bull sale. Your support is greatly appreciated. We look forward to seeing you at our sale. To our new customers, a warm welcome. Whether a bull gets bought or not, we look forward to visiting with all of you after the sale.

Kelsey, Malissa, Brett and Carter

TERMS & CONDITIONS

TERMS - TERMS OF THIS SALE ARE CASH OR CHEQUE PAYABLE IN CANADIAN FUNDS. THE RIGHT TO PROPERTY SHALL NOT PASS UNTIL AFTER SETTLEMENT HAS BEEN MADE. ALL SETTLEMENTS MUST BE MADE WITH THE CLERKS OF THE SALE BEFORE CATTLE WILL BE RELEASED.

BIDS - EVERY ANIMAL ENTERING THE RING WILL BE SOLD TO THE HIGHEST BIDDER; AUCTIONEER'S DECISION WILL BE FINAL.

PURCHASERS RISK - EACH ANIMAL BECOMES THE RISK OF THE PURCHASER AS SOON AS SOLD. INSURANCE WILL BE AVAILABLE SALE DAY.

CATTLE INSPECTION - ALL CATTLE WILL CARRY IDENTIFICATION TAGS CORRESPONDING TO SALE LOT NUMBERS THEY ALSO WILL HAVE R.F.I.D. TAGS.

ANNOUNCEMENTS - ERRORS OR OMISSIONS IN THE CATALOG WILL BE ANNOUNCED BEFORE SALE AND ANY CORRECTIONS WILL TAKE PRECEDENCE OVER PRINTED MATTER IN THE CATALOG.

BREEDING GUARANTEE - ALL CATTLE ARE SOUND AND RIGHT AND SELL WITH "RESPONSIBLE BREEDER GUARANTEE AND SATISFACTION". IN THE EVENT OF AN UNLIKELY DISPUTE, THE REGULAR TERMS AND CONDITIONS STANDARD WITH THE CANADIAN ABERDEEN ANGUS ASSOCIATION SHALL APPLY. IN ANY CASE, THE SELLER IS NOT RESPONSIBLE FOR MORE THAN THE PRICE THE BULL WAS DECLARED SOLD FOR ON SALE DAY.

ACCIDENTS - ANY PERSON ATTENDING THE SALE DOES SO AT THEIR OWN RISK AND RECOGNIZES THAT THERE ARE INHERENT DANGERS. ALTHOUGH EVERY PRECAUTION WILL BE TAKEN TO PROTECT THE SAFETY AND COMFORT OF BUYERS, NEITHER THE SALES MANAGER, AUCTIONEER NOR ANY OWNER ASSUMES ANY RESPONSIBILITY IN THIS MATTER AND DISCLAIMS ANY LIABILITY, LEGAL OR OTHERWISE, IN THE EVENT OF AN ACCIDENT OR LOSS OF PROPERTY.

LIABILITY - PURCHASERS MUST LOOK TO THE SELLER OF ANIMAL FOR FULFILLMENT OF ALL GUARANTEES AND REPRESENTATIONS MADE HEREUNDER. BOW SLOPE SHIPPING ASSOCIATION IS ACTING AS AGENT AND ASSUME NO RESPONSIBILITY FOR REPRESENTATIONS MADE BY THE SELLER.

PHONE, MAIL OR SIGHT UNSEEN BIDS - ALL BIDS WILL BE IN COMPLETE CONFIDENCE WITH SALES STAFF LISTED OR OWNERS.



*Where Customers
Become Friends*





BOX 66
DUCHESS, AB T0J 0Z0

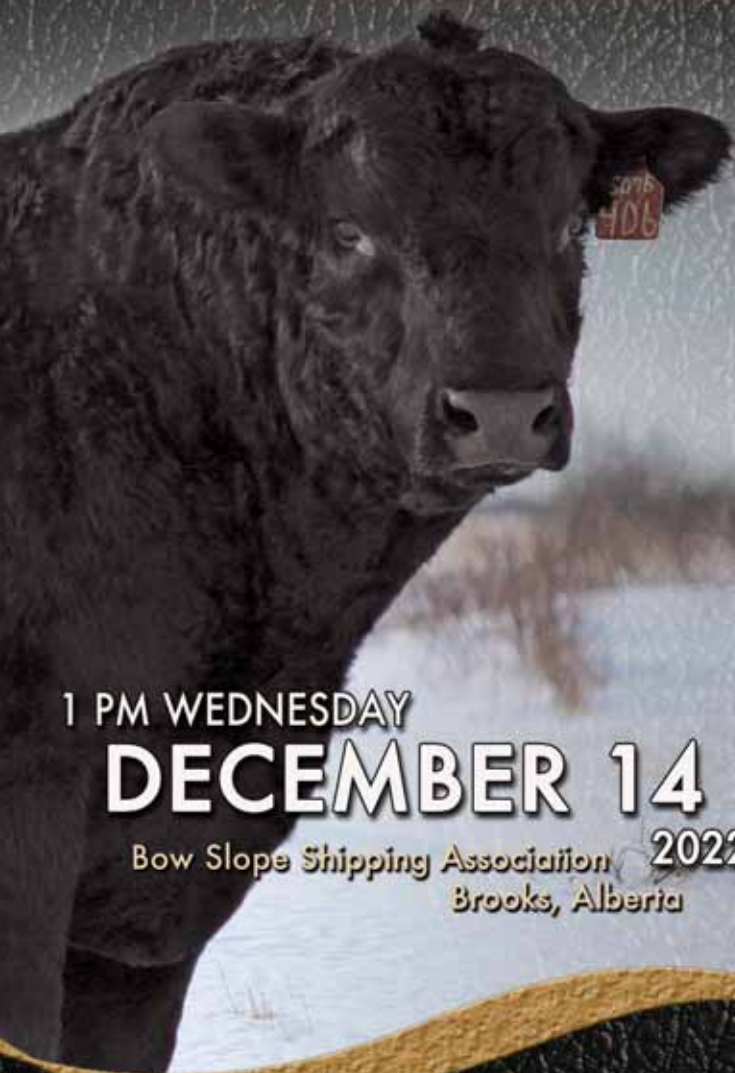


RETURN POSTAGE GUARANTEED
PORT DE RETOUR GARANTI

9th Annual

Fall

BULL SALE



1 PM WEDNESDAY

DECEMBER 14

Bow Slope Shipping Association 2022
Brooks, Alberta

Run under strict
range conditions

www.66RanchLtd.com