



*11th  
Annual*

# BULL SALE

1 PM THURSDAY **APRIL 21** 2022

Bow Slope Shipping Association  
Brooks, Alberta

**102** Yearling Black Angus Bulls

**47** Two Year Old Black Angus Bulls

Online Bidding at  
[DVAuction.com](http://DVAuction.com)  
& [DLMS.ca](http://DLMS.ca)

66 RANCH LTD.  
Kelsey Campbell  
403.362.0672



# Welcome

## TO OUR 11<sup>TH</sup> ANNUAL SPRING BULL SALE!

We would like to thank all of our customers from our previous sales for your purchases and trust they are performing to your expectations. We also would like to welcome any of you who are new to our program for taking the time to evaluate our program and our cattle.

Once again, our yearling bulls and 2 Year old bulls are carefully grown at home by us and not pushed with feed. We feel it is important to grow our cattle slowly with a low energy ration to allow the cattle to grow into working ranch bulls that will provide service for your cows for many years to come.

Our yearling bulls are just coming up to a year of age at sale time and some are just 11 and half months of age at sale time. So our yearling bulls are just fed a backgrounding ration consisting of 15% good alfalfa, 3.5% supplement, 5% oats and the balance of their ration is corn silage. Typically by mid March or so the oats will be removed from their ration.

Our 2 year old bulls are selected by age a year previous. All the bull calves at our place that are born after May 10th are sorted into a group and will remain there until they are either culled or ready for sale as 2 Year olds. The bulls destined to the 2 Year old sale bulls are sorted off as calves and that pen does not ever have any bulls sorted off of it other than to cull the ones that won't make 2 year olds. We feel this is the only way to have a strong set of 2 year old bulls to offer to our customers. These bulls are grown as calves on the same ration as previously described for the yearling bulls in the sale. Usually mid summer we will have a pasture available for these guys to spend the rest of the summer and fall in away from some of our breeding fields. They will remain out grazing prairie on a normal year until the end of December and sometimes as late as mid January. They are then fed a ration consisting of 15% good alfalfa, 3.5% supplement and the balance cereal silage. We have found over the years of selecting sires with easy fleshing abilities these bulls do not need any grain to keep an ample amount of flesh through the winter months. We will gather these bulls up usually the day before videos take place and they will remain in a large pen at the feedlot until sale time.

After our Covid experience the last couple years at our sales we finally decided (probably a year or two too late) to bring on DLMS for another option to purchase animals sale day. We will still also be using the services of DV Auction sale day. Sarah Hasson does all our videos and still pictures for our catalogs. We want to extend a true thank you and appreciation of her patience and the tremendous job she does of the pictures and videos. Of course we hope you all can attend in person sale day but, if you do not have time to attend the sale please make use of either DV Auction or DLMS to make your purchases sale day.

If you would like to purchase on a telephone or want to leave orders with a sale day representative that is always an option as well. Any animals bought sight unseen will be guaranteed full satisfaction after delivery.

Bulls and their dams will be available for viewing at the ranch anytime prior to the sale. Bulls will be available for viewing at Bow Slope Shipping Association in the afternoon of April 20th. Please come early April 21st for viewing of the bulls prior to sale time at 1:00 PM MST sharp. And whether you purchase a bull, or just come to evaluate our cattle for the first time please join us directly after the sale for a fantastic Angus Steak prepared by the Brooks Hotel staff and a little 66 Ranch "Country Hospitality!"

Thanks!

*Kelsey, Malissa, Brett and Carter*







11th Annual

# BULL SALE

THURSDAY, APRIL 21, 2022 at 1 PM

Bow Slope Shipping Association - Brooks, Alberta

*Offering* • 47 Two Year Old Black Angus Bulls • 102 Yearling Black Angus Bulls

**VIEWING:** Bulls can be viewed anytime before the sale at the ranch. Bulls will be available for viewing at Bow Slope Shipping Association on Wednesday, April 20.

**PURCHASER'S RISK:** Each animal becomes the risk of the purchaser as soon as sold. Insurance will be available sale day with Canadian Farm Insurance, Jill Wildman 1-780-305-1146.

**BREEDER'S GUARANTEE:** All two year old bulls and yearling bulls will be semen tested and physically examined by our local vet and sold with a breeders guarantee.

**EVERY BULL at the sale will be sold with a 100% satisfaction guarantee.**

**SIGHT UNSEEN:** In the event you are unable to attend the sale or use the online option, bids can be given to sale staff or owners with satisfaction guaranteed.

**ACCOMMODATION:**

Heritage Inn & Suites 403-362-8688  
Ramada 403-362-6440

**TWO YEAR OLD & YEARLING BULLS  
TO GO RIGHT AFTER THE SALE!!!**



Malissa & Kelsey  
Carter & Brett

## 66 RANCH LTD.

**Kelsey & Malissa Campbell**

Box 66, Duchess, AB  
T0J 0Z0

Kelsey - 403-362-0672  
Malissa - 403-501-9358  
email: 66@66ranchltd.com

[www.66RanchLtd.com](http://www.66RanchLtd.com)

### CAN'T MAKE IT ON SALE DAY?

*Our sale will be broadcast online @*

**DVAuction**  
[www.dvauction.com](http://www.dvauction.com)



We are pleased to announce that we will have the services of DVAuction and DLMS. This will allow you to bid on the bulls via the internet. Of course, we would rather you attend the sale and our hospitality afterwards, but we well know today's world just keeps getting busier and busier! But, for some reason you cannot attend, this gives you the opportunity to bid on the bulls at the live auction. Please remember to pre-register at [www.dvauction.com](http://www.dvauction.com) or [www.dlms.ca](http://www.dlms.ca) 24 hrs. prior to the sale. We also have available with this service a live video of every animal in the sale & photos of their feet. To view these videos go to our website [66ranchltd.com](http://66ranchltd.com) and just click on the video links. We encourage you if possible to view the cattle at the ranch prior to the sale.

Please contact Sarah Hasson at 1-306-681-5340 with DV or Mark Shologan at 1-780-699-5082 for DLMS with any questions or issues with registering for the sale.

**AUCTIONEER:**

Frank Jenkins - 403-627-6700

**SALE STAFF:**

Bow Slope Shipping Association  
Lachie McKinnon - 403-362-1825  
Erik Christensen - 403-363-9942  
Darren Shaw - 403-601-5165  
Justin Keeley - 403-627-6534  
Danny Sewell - 403-363-0632

### - SALE DAY PHONES -

AUCTION MART 403-362-5521

KELSEY'S CELL 403-362-0672

MALISSA'S CELL 403-501-9358

PLEASE JOIN US  
AFTER THE SALE FOR  
A LITTLE "COUNTRY HOSPITALITY"



### PLEASE NOTE:

- All two year olds and yearlings are semen tested
- No bulls have been sold prior to the sale
- Bulls are sold in catalog order
- Updated weights & scrotal measurements will be available Sale day
- 66 Ranch reserves the right to draw 250 straws of semen at our expense and at your convenience on any bull selling in the sale. For in-herd use only.

## BERRY CREEK VETERINARY SERVICES

The two year old bulls offered for sale by 66 Ranch have all passed a breeding soundness examination and are classified as satisfactory potential breeders.

This year the yearling bulls offered for sale by 66 Ranch have passed a breeding soundness examination and are classified as satisfactory potential breeders. They have scrotal circumference measurements above the minimum requirement recommended by the Society of Theriogenology and Western Canadian Association of Bovine Practitioners.

In my opinion the bulls offered for sale are in excellent health and in ideal body condition.

Sincerely,  
Kirby Finkbeiner, DVM

## RECOMMENDED HEIFER BULLS

There are probably more than the 48 recommended "Heifer Bulls" at our sale. But we feel confident that the bulls with the **bold print BW** in the catalogue will make for trouble free calving off your 1st calf heifers.

## PERFORMANCE DATA

AOD: Age of Dam

BW: Actual Birth Weight

205D: Weaning weight in lbs.  
adjusted to 205 days

365D: Yearling weight in lbs.  
adjusted to 205 days

## EPD EXPLANATION

**BW:** Birth weight, a prediction of a sire's ability to transmit birth weight to his progeny

**WW:** Weaning weight, predictor of a sire's ability to transmit weaning growth to his progeny

**YW:** Yearling weight, predictor of a sire's ability to transmit yearling growth to his progeny

**MILK:** A predictor of a sire's genetic merit for milk and mothering ability as expressed in his daughters

The current Angus Average EPDs are as follows and are the numbers to compare the bulls in the catalog to:

### AVERAGE BLACK ANGUS EPDS FOR ALL CALVES BORN IN 2020

EPDs	BW	WW	YW	MILK	CE	MCE
	+2.0	+51	+89	+23	+3.6	+6.8

# Thank You!!

## TO OUR 2021 CUSTOMERS

9 Bar Ranch Co. Ltd.\*  
Jim Aleman  
James Blakley\*  
Jordon Bandura\*  
Bluefield Grazing  
Blocks Ranching Ltd\*  
Bogi Ranching\*  
Chase and Jim Brown  
Burnett Angus  
Cactus Coulee Ranch  
Carolside Ranching\*  
John Clark  
Tim Christianson\*  
Chizik Holdings Ltd\*  
Connors Brothers Ltd\*

Creekstone Ranching Ltd  
Cypress Colony  
Deer Creek Livestock Co. Ltd.\*  
Neal Deitz\*  
Deschamps Ranching Ltd.\*  
Brad & Kelly Deschamps Ltd\*  
Diamond V Ranch\*  
Jason Dick\*  
Wayne Doerksen  
Ewelme Colony\*  
Kevin Friemark\*  
Kenneth Friemark\*  
F-R Angus\*  
Gaff Ranch Ltd\*  
Gemstone Cattle Company

Del, Murray and Jason Giles  
Chad Galbraith\*  
Gold-Bar Livestock  
Granum Colony\*  
Myles and Nancy Gray\*  
Chancey Guichon\*  
Duane Hale\*  
Jason Hale\*  
Albert Henrickson\*  
Richard Hiebert  
Peter Hilton Enterprises Ltd.  
Nate and Jen Horner\*  
Craig and Elaine Horner\*  
Larry and Marilyn Hudec\*  
Clay and Delta Hudec  
Rick Irwin\*  
Freeman Iwasiek  
J4 Ranch\*  
Jenkins Lazy U Ranch\*  
Steve Johnson

Alan Jones\*  
Reo King  
Klassen Brothers\*  
Lacombe Research Centre  
Casey and Makayla Lawes\*  
Skyler Lockhart  
Scott & Sheila Metcalf\*  
Musgrove Enterprises Ltd  
John McKee\*  
Norm and Tammy McNeil\*  
Pekisko Creek Ranch & Cattle\*  
Bruce and Connie Pierson\*  
Tyler Popescul  
Rafter T Cattle Co.\*  
J.R Reding  
Remount Grazing\*  
Rommens Farms Ltd.\*  
Rowbotham Ranching\*  
Rutledge Ranching  
Sammons Land & Cattle

Carl Scheibner\*  
Lance Schelske\*  
Brad Schmidt  
Sheidaghan Angus  
Tanner Spady  
Clayton Stern  
Tateson Ranching\*  
Max Tateson  
Edward Timko\*  
Howard and Brad Toews  
TNT Cattle Co. Ltd.\*  
Ray Torkelson\*  
Veno Ranches  
Justin Veno\*  
Wever Farms Ltd\*  
Wisdom Ranching Co\*  
Wildcat Cattle\*  
Gordon Wudrich\*  
Steve and Janet Yule\*

\* Repeat customers





## YEARLINGS

### REFERENCE SIRE



19 sons sell

### 66 CHISM 1D

MALE CKM 1D 1929946 APRIL 03 2016

STUART CHISM 82A 1736988

S CHISUM 6175 †  
STUART MISS ROSE 22U

66 DUCHESS 249A 1738898

BAD LANDS DAQUANTAE 26L  
BAD LANDS DUCHESS 9025W

EPDs	BW	WW	YW	MILK	CE	MCE
	+2.0	+78	+114	+6	+5.0	+12.0

A walking bull raised at 66 Ranch. What a fortunate thing happening to us with this bull! He checks all the boxes, very moderate birth, great performance, and awesome looking female progeny, great scrotal, feet are superb, natural ease of flesh. We are very, very high on these 1D bred progeny. The rancher's kind of cattle out of this bull! Bull calves average birthweight is 82 lbs. Heifer calves is 77 lbs.

YEARLING SONS SELL AS LOTS 1-8 & 66-74  
TWO YEAR OLD SONS SELL AS LOTS 32 & 33



CKM 6F

DAUGHTER  
OF 66  
CHISM 1D



### AGAIN THIS YEAR

Feet photos  
of sale bulls  
available with the  
online videos at  
[66RanchLtd.com](http://66RanchLtd.com)

## WHY WE HOLD OUR SALE LATER IN APRIL

We, along with our veterinarian's advice, believe the yearling bulls will be old enough to semen test prior to the sale. By doing this, hopefully it will make your & our lives easier by the bulls being able to go to their new homes directly after the sale or shortly thereafter.

40D

DAM OF  
LOT 1



YEARLING  
1

66 CHISM 1D 1929946

66 ROSEBUD 40D 1929979

AOD	BW	205D	EPDs	BW	WW	YW	MILK
6	80	784		+0.5	+66	+101	+15

### 66 CHISM 186J

MALE CKM 186J 2238546 APRIL 25 2021

STUART CHISM 82A  
66 DUCHESS 249A

66 THUNDER 308A  
66 ROSEBUD 525B



Lot 2

YEARLING  
2

66 CHISM 1D 1929946

66 DUCHESS 140D 1930075

AOD	BW	205D	EPDs	BW	WW	YW	MILK
6	87	752		+2.0	+68	+103	+16

### 66 CHISM 238J

MALE CKM 238J 2231497 APRIL 28 2021

STUART CHISM 82A  
66 DUCHESS 249A

SHIPWHEEL CHINOOK †  
66 DUCHESS 360B

## BULLS SELL IN CATALOG ORDER

Updated weights & scrotal measurements available Sale Day



YEARLING  
3

## 66 CHISM 156J

MALE CKM 156J 2231470 APRIL 24 2021

66 CHISM 1D 1929946

STUART CHISM 82A  
66 DUCHESS 249A

66 BARBARA 472E 1997582

SANKEYS JUSTIFIED 101  
BAD LANDS BARBARA 9061W

AOD	BW	205D	EPDs	BW	WW	YW	MILK
5	85	743		+3.2	+67	+102	+13



YEARLING  
4

## 66 CHISM 235J

MALE CKM 235J 2231496 APRIL 27 2021

66 CHISM 1D 1929946

STUART CHISM 82A  
66 DUCHESS 249A

66 MIDDLEBROOK 485B 1814536

BAD LANDS FINAL ANSWER 107W  
DEER RIVER MIDDLEBROOK 459U

AOD	BW	205D	EPDs	BW	WW	YW	MILK
8	79	758		+1.0	+62	+92	+13

**BUY A BULL & YOU COULD  
WIN A 66 RANCH HEIFER!**

DRAW FOR BUYERS AFTER THE SALE

For all purchases made  
Online - By Phone - In Person

DETAILS ON PAGE 48

ALL YEARLINGS & 2 YEAR OLDS  
HAVE BEEN SEMEN TESTED &  
BREEDING SOUNDNESS EVALUATED



YEARLING  
5

## 66 CHISM 245J

MALE CKM 245J 2231500 APRIL 28 2021

66 CHISM 1D 1929946

STUART CHISM 82A  
66 DUCHESS 249A

66 COUNTESS 45D 1929984

SHIPWHEEL CHINOOK ‡  
66 COUNTESS 302B

AOD	BW	205D	EPDs	BW	WW	YW	MILK
6	75	705		+0.4	+64	+99	+14



**485B**

DAM OF  
LOT 4



**45D**

DAM OF  
LOT 5

AOD: AGE OF DAM

‡ Indicates at least 1 genetic condition test with a free result  
EPDs in this catalog as of March 21/22





YEARLING  
**6**

## 66 CHISM 88J

MALE CKM 88J 2231448 APRIL 21 2021

66 CHISM 1D 1929946

STUART CHISM 82A  
66 DUCHESS 249A

66 IDELETTE 391E 1997424

CONNEALY THUNDER ‡  
66 IDELETTE 37C

AOD	BW	205D	EPDs	BW	WW	YW	MILK
5	88	731		+2.3	+65	+105	+16



YEARLING  
**7**

## 66 CHISM 60J

MALE CKM 60J 2231440 APRIL 19 2021

66 CHISM 1D 1929946

STUART CHISM 82A  
66 DUCHESS 249A

BAD LANDS DELIA 1080Y 1615343

NLC FEATURE ATTRACTION 3W  
BAD LANDS DELIA 5031R

AOD	BW	205D	EPDs	BW	WW	YW	MILK
11	91	746		+4.2	+66	+96	+17



**391E**

DAM OF  
LOT 6



**1080Y**

DAM OF  
LOT 7



**33C**

DAM OF  
LOT 8



YEARLING  
**8**

## 66 CHISM 241J

MALE CKM 241J 2231498 APRIL 28 2021

66 CHISM 1D 1929946

STUART CHISM 82A  
66 DUCHESS 249A

66 MIDDLEBROOK 33C 1867091

66 ALLIANCE 17Z  
SOUTH FORK MIDDLEBROOK 111Z

AOD	BW	205D	EPDs	BW	WW	YW	MILK
7	92	708		+4.0	+71	+110	+12



WE WELCOME YOUR VISIT TO VIEW THE BULLS AT 66 RANCH PRIOR TO THE SALE

## REFERENCE SIRE



12 sons sell

### HOOVER DAM

MALE IMP 18U ± 1552414 JANUARY 25 2008

SYDGEN C C & 7 ± 1552417

S A F CONNECTION †  
SYDGEN FOREVER LADY 4087 †

ERICA OF ELLSTON C124 14851883

TC GRIDIRON 258 †  
ERICA OF ELLSTON V65

EPDs	BW	WW	YW	MILK	CE	MCE
	-0.3	+46	+88	+25	+7.0	+8.0

An A.I. sire we used exclusively on heifers. A real calving ease sire, that produces thick attractive progeny. The females are quite attractive with excellent udders. Bull calves average birthweight is 79 lbs. Heifer calves is 74 lbs.

YEARLING SONS SELL AS LOTS 9-14 & 102-107



Lot 9

YEARLING  
9

### 66 HOOVER DAM 30J

MALE CKM 30J 2231430 APRIL 17 2021

HOOVER DAM ± 1552414

SYDGEN C C & 7 †  
ERICA OF ELLSTON C124

66 HEROINE 16G 2116667

WK BOBCAT †  
66 HEROINE 42E

AOD	BW	205D	EPDs	BW	WW	YW	MILK
3	<b>72</b>	676		-0.1	+52	+94	+27



Lot 10

YEARLING  
10

### 66 HOOVER DAM 183J

MALE CKM 183J 2231479 APRIL 25 2021

HOOVER DAM ± 1552414

SYDGEN C C & 7 †  
ERICA OF ELLSTON C124

66 BLACK LASS 261C 1867324

CONNEALY THUNDER †  
66 BLACK LASS 340A

AOD	BW	205D	EPDs	BW	WW	YW	MILK
7	<b>73</b>	733		-2.6	+46	+86	+28

261C

DAM OF  
LOT 10



## CALVING EASE BULLS BW IN **BOLD** PRINT

### *Dam Photos*

The photos of dams in this catalog may not be the traditional combed up, blown off "Pretty" pictures most people use. These are pictures of our cows in their working clothes.

For any of you that are not completely familiar with our program, we take a photo of all our cows when we tag their newborn calf. This way we can see their bags anytime of the year, and are available to show all of you our cows when their bags are at their fullest, moments after they calve.







Lot 11

YEARLING  
11

## 66 HOOVER DAM 390J

MALE CKM 390J 2231558 MAY 04 2021

HOOVER DAM ‡ 1552414

SYDGEN C C & 7 ‡  
ERICA OF ELLSTON C124

66 PEARL 195A 1738858

BAD LANDS ALLIANCE 326X  
BAD LANDS PEARL 1047Y

AOD	BW	205D	EPDs	BW	WW	YW	MILK
9	74	723		-0.1	+42	+78	+24



Lot 13

YEARLING  
13

## 66 HOOVER DAM 403J

MALE CKM 403J 2231561 MAY 05 2021

HOOVER DAM ‡ 1552414

SYDGEN C C & 7 ‡  
ERICA OF ELLSTON C124

66 BLACKLASS 640C 1876634

BAD LANDS ATTRACTION 109Y  
BAD LANDS BLACKLASS 808H

AOD	BW	205D	EPDs	BW	WW	YW	MILK
7	83	626		+1.1	+37	+76	+21



Lot 12

YEARLING  
12

## 66 HOOVER DAM 109J

MALE CKM 109J 2231459 APRIL 22 2021

HOOVER DAM ‡ 1552414

SYDGEN C C & 7 ‡  
ERICA OF ELLSTON C124

66 MINA 257G 2125152

66 ALLIANCE 17Z  
66 MINA 324A

AOD	BW	205D	EPDs	BW	WW	YW	MILK
3	92	675		+4.2	+57	+101	+24



Lot 14

YEARLING  
14

## 66 HOOVER DAM 174J

MALE CKM 174J 2231476 APRIL 25 2021

HOOVER DAM ‡ 1552414

SYDGEN C C & 7 ‡  
ERICA OF ELLSTON C124

66 BARBARA 268G 2119635

COLE CREEK BLACK CEDAR 46P ‡  
BLACK GEM LOVEMERE R 221N

AOD	BW	205D	EPDs	BW	WW	YW	MILK
3	65	564		-1.4	+33	+60	+23



195A - DAM OF LOT 11



640C - DAM OF LOT 13



268G - DAM OF LOT 14

## REFERENCE SIRE



### BANDURA MR RESOURCE 173G

MALE BAN 173G 2095318 MARCH 25 2019

S A V RESOURCE 1441 † 1707295

RITO 707 OF IDEAL 3407 7075 †  
S A V BLACKCAP MAY 4136 †

BANDURA MS 72561 GEORGINA 12C 1845108

SITZ UPWARD 307R †  
CHAMPION HILL GEORGINA 72561 DDC

EPDs	BW	WW	YW	MILK	CE	MCE
	+2.7	+65	+122	+18	+6.0	+5.0

A Resource bred walking bull we purchased from Bandura Ranches. A huge middle on this bull with very correct foot and leg structure. The females off of 173G should be the kind we are all striving to find, with the combination of Resource on the top side and Sitz Upward on the bottom side of the pedigree will produce deep sided, strong uddered, feminine females. Bull calves average birthweight is 78 lbs. Heifer calves is 77 lbs.



YEARLING  
15

### 66 MR RESOURCE 429J

MALE CKM 429J 2238311 MAY 06 2021

BANDURA MR RESOURCE 173G 2095318

S A V RESOURCE 1441 †  
BANDURA MS 72561 GEORGINA 12C

66 PRIDE 143F 2058509

STUART CHISM 82A  
66 PRIDE 197C

AOD	BW	205D	EPDs	BW	WW	YW	MILK
4	80	767		+2.0	+70	+118	+16



143F

DAM OF  
LOT 15

IT'S THE SERVICE  
AFTER THE SALE THAT COUNTS!

## SIRES REPRESENTED

IN THIS CATALOG

66 CHISM 1D  
HOOVER DAM  
BANDURA MR RESOURCE 173G  
COLE CREEK RIDGE LINE 216D  
66 THRIVE 8023F  
66 RIGHT TIME 326D  
COLE CREEK CEDAR 1095  
F-R CEDAR RIDGE 4210  
66 ALLIANCE 217C  
WCC RESOURCE 406D  
KMK ALLIANCE 6595 187  
COLE CREEK LIL SEAL 1166  
HOOVER COUNSELOR N29  
66 CHISM 398F

F-R 5289 7048E  
REID ANGUS REBORN 39D  
66 BOBCAT 271B  
66 SEVEN SON 402E  
COLE CREEK SOLID BLACK 948  
S A V RENOVATION 6822  
66 BOBCAT 21F  
MOGCK ENTICE  
BROOKING FIREBRAND 6068  
SYDGEN ENHANCE  
WK BOBCAT  
S A V RESOURCE 1441

CONNEALY THUNDER  
HOOVER KNOW HOW  
HF RISKY BUSINESS 135G  
HOOVER ELATION M123  
BUFORD REBOUND C837  
66 CHISM 48G  
BULL'S EYE COMMAND 78F  
BADLANDS ALLIANCE 14W  
BURNETT DIESEL 40G  
HF SYNDICATE 213Z  
66 ALLIANCE 172F  
BROOKING REAL ESTATE 6072  
V D A R REALLY WINDY 4097  
HOOVER CUT ABOVE P427





Lot 16



Lot 17

YEARLING  
16

## 66 MR RESOURCE 68J

MALE CKM 68J 2238420 APRIL 20 2021

BANDURA MR RESOURCE 173G 2095318

S A V RESOURCE 1441 †  
BANDURA MS 72561 GEORGINA 12C

66 PRINCESS 117F 2075593

66 BOBCAT 271B  
66 PRINCESS 202C

AOD	BW	205D	EPDs	BW	WW	YW	MILK
4	77	754		+1.8	+65	+110	+21

YEARLING  
17

## 66 MR RESOURCE 387J

MALE CKM 387J 2238304 MAY 04 2021

BANDURA MR RESOURCE 173G 2095318

S A V RESOURCE 1441 †  
BANDURA MS 72561 GEORGINA 12C

66 ELINE 336F 2058622

COLE CREEK BLACK CEDAR 1100  
66 ELINE 202D

AOD	BW	205D	EPDs	BW	WW	YW	MILK
4	65	734		-1.6	+50	+92	+22

336F

DAM OF  
LOT 17



500F

DAM OF  
LOT 18



Lot 18

YEARLING  
18

## 66 MR RESOURCE 414J

MALE CKM 414J 2238307 MAY 06 2021

BANDURA MR RESOURCE 173G 2095318

S A V RESOURCE 1441 †  
BANDURA MS 72561 GEORGINA 12C

66 MISS MANNERS 500F 2058693

COLE CREEK CEDAR RIDGE 181  
SOUTH FORK MISS MANNERS 262Z

AOD	BW	205D	EPDs	BW	WW	YW	MILK
4	88	713		+2.8	+53	+101	+20





## 2 YEAR OLDS

### REFERENCE SIRE

#### COLE CREEK RIDGE LINE 216

MALE IMP 0216D 1963221 FEBRUARY 17 2016

COLE CREEK RIDGE LINE 1243 17622265

COLE CREEK RIDGE 1340  
COLE CREEK JUANADA MIST 12T

FCOLE CREEK JUANADA G 743 17622336

COLE CREEK BLACK CEDAR 1100  
COLE CREEK JUANADA G 15W

EPDs	BW	WW	YW	MILK	CE	MCE
	+0.1	+48	+75	+14	+9.0	+8.0

A walking bull we purchased from Cole Creek Angus. 216D is fat 365 days a year. He walked last season and maintained his flesh through breeding season. Very attractive cattle sired by 216D, deep, easy keeping, really pretty headed. Bull calves average birthweight is 79 lbs. Heifer calves is 76 lbs.

**2 sons sell**



**Lot 20**



**365N**  
GRANDAM  
OF  
LOT 19

**2 YR OLD**  
**19**

#### 66 RIDGE LINE 608H

MALE CKM 608H 2178090 MAY 14 2020

COLE CREEK RIDGE LINE 216 1963221

COLE CREEK RIDGE LINE 1243  
FCOLE CREEK JUANADA G 743

66 QUEEN 231E 1997281

66 ALLIANCE 17Z  
BAD LANDS QUEEN 365N

AOD	BW	205D	365D	EPDs	BW	WW	YW	MILK
5	86	706	1227		+1.7	+54	+86	+20

**2 YR OLD**  
**20**

#### 66 RIDGE LINE 628H

MALE CKM 628H 2178198 MAY 16 2020

COLE CREEK RIDGE LINE 216 1963221

COLE CREEK RIDGE LINE 1243  
FCOLE CREEK JUANADA G 743

66 LILIC 416E 1997536

66 ALLIANCE 17Z  
DEER RIVER LILAC 9R

AOD	BW	205D	365D	EPDs	BW	WW	YW	MILK
5	<b>70</b>	691	1137		+0.1	+52	+77	+19

### 66 RANCH LTD.

Reserves the right to draw 250 straws  
of semen at our expense and at your  
convenience on any bull selling in the sale.  
For in-herd use only.





## REFERENCE SIRE

### 66 THRIVE 8023F

MALE CKM 8023F 2057466 APRIL 21 2018

S A V THRIVE 5054 † 1943196

S A V RENOWN 3439 †  
S A V ERICA 9448 †

66 MARCIA 5061C 1877324

BANDURA MR FIELD MASTER 92A  
DEER RIVER MARCIA 147W

EPDs	BW	WW	YW	MILK	CE	MCE
	+4.1	+69	+144	+17	-5.0	+1.0

A walking bull raised at 66 Ranch. 8023F's calves weaned off very consistently. All big! A very respectable birth weight out of 8023F as well. Bull calves average birthweight is 83 lbs. and heifer calves is 70 lbs.

**2 sons sell**



5061C

DAM OF  
66 THRIVE  
8023F



**Lot 21**

2 YR OLD  
**21**

66 THRIVE 8023F 2057466

66 IDELETTE 624E 2003047

AOD	BW	205D	365D	EPDs	BW	WW	YW	MILK
5	82	671	1215		+1.6	+58	+112	+16

### 66 THRIVE 636H

MALE CKM 636H 2178076 MAY 16 2020

S A V THRIVE 5054 †  
66 MARCIA 5061C

66 ALLIANCE 179C  
DEER RIVER IDELETTE 456S



**Lot 22**

2 YR OLD  
**22**

66 THRIVE 8023F 2057466

66 BLACKBIRD 415E 1997535

AOD	BW	205D	365D	EPDs	BW	WW	YW	MILK
5	88	657	1144		+3.1	+52	+100	+18

### 66 THRIVE 707H

MALE CKM 707H 2178007 JUNE 04 2020

S A V THRIVE 5054 †  
66 MARCIA 5061C

V D A R CEDAR WIND 8111  
DEER RIVER BLACKBIRD 158W

624E

DAM OF  
LOT 21



415E

DAM OF  
LOT 22



## REFERENCE SIRE

### 66 RIGHT TIME 326D

MALE CKM 326D 1937174 APRIL 25 2016

LEACHMAN RIGHT TIME † 779510

N BAR EMULATION EXT †  
LEACHMAN ERICA 0025

BAD LANDS LASSIE 1044Y 1655922

BAD LANDS ALLIANCE 14W  
BAD LANDS LASSIE 5124R

EPDs	BW	WW	YW	MILK	CE	MCE
	+0.5	+58	+79	+19	+3.0	+9.0

A walking bull raised at 66 Ranch. What a maternal powerhouse!! Leachman Right Time on top and the dam is one of the best Alliance bred females at the Ranch. Longevity from the Right Time, we have Right Time cows last until 17 years old at our place. The Alliance will give you the perfect udders you are looking for as well as the extreme docility we all like. The neat thing with Alliance bred into the Right Time, is this sire has great scrotal, with that, the fertility will be passed onto his progeny. Bull calves average birthweight is 81 lbs. Heifer calves is 77 lbs.

**12 sons sell**

YEARLING SONS SELL AS LOTS 115-117



**1044Y**

DAM OF  
66 RIGHT  
TIME 326D



**Lot 23**

2 YR OLD  
**23**

### 66 RIGHT TIME 672H

MALE CKM 672H 2178212 MAY 24 2020

LEACHMAN RIGHT TIME †  
BAD LANDS LASSIE 1044Y

66 RIGHT TIME 326D 1937174

66 ANNIE 433C 1867486

66 ALLIANCE 17Z  
SOUTH FORK ANNIE 47Z

AOD	BW	205D	365D	EPDs	BW	WW	YW	MILK
7	85	721	1158		+1.7	+58	+83	+24



**433C**

DAM OF  
LOT 23



**ALL TIED UP SALE DAY?**

**NO PROBLEM!**

**WATCH LIVE & BID ONLINE**

**DVAuction**  
www.dvauction.com

**DLM S**  
www.dlms.ca



**Lot 24**

2 YR OLD  
**24**

### 66 RIGHT TIME 639H

MALE CKM 639H 2178075 MAY 16 2020

LEACHMAN RIGHT TIME †  
BAD LANDS LASSIE 1044Y

66 RIGHT TIME 326D 1937174

66 ZARA JUMBO 16D 1929957

66 ALLIANCE 17Z  
66 ZARA JUMBO 416A

AOD	BW	205D	365D	EPDs	BW	WW	YW	MILK
6	84	724	1176		+2.3	+59	+81	+23





Lot 25

2 YR OLD  
**25**

## 66 RIGHT TIME 656H

MALE CKM 656H 2178141 MAY 21 2020

66 RIGHT TIME 326D 1937174

LEACHMAN RIGHT TIME ‡  
BAD LANDS LASSIE 1044Y

66 LASSIE 465A 1760974

DEER RIVER IMAGE MAKER 231W  
BAD LANDS LASSIE 4008P

AOD	BW	205D	365D	EPDs	BW	WW	YW	MILK
9	<b>73</b>	706	1144		-0.1	+50	+66	+19



**465A**  
DAM OF  
LOT 25

**21C**

DAM OF  
LOT 26



2 YR OLD  
**26**

## 66 RIGHT TIME 615H

MALE CKM 615H 2178177 MAY 14 2020

66 RIGHT TIME 326D 1937174

LEACHMAN RIGHT TIME ‡  
BAD LANDS LASSIE 1044Y

66 HYALITE HEDY 21C 1867079

WILL ROLE MODEL ‡  
BAD LANDS HYALITE HEDY 102X

AOD	BW	205D	365D	EPDs	BW	WW	YW	MILK
7	<b>77</b>	572	1024		+0.0	+36	+58	+18



**137D**  
DAM OF  
LOT 28



Lot 27

2 YR OLD  
**27**

## 66 RIGHT TIME 674H

MALE CKM 674H 2191643 MAY 24 2020

66 RIGHT TIME 326D 1937174

LEACHMAN RIGHT TIME ‡  
BAD LANDS LASSIE 1044Y

66 LADY 117B 1805788

CONNELLY THUNDER ‡  
BAD LANDS LADY 4023P

AOD	BW	205D	365D	EPDs	BW	WW	YW	MILK
8	85	750	1264		+0.7	+55	+88	+21



Lot 28

2 YR OLD  
**28**

## 66 RIGHT TIME 698H

MALE CKM 698H 2178181 JUNE 01 2020

66 RIGHT TIME 326D 1937174

LEACHMAN RIGHT TIME ‡  
BAD LANDS LASSIE 1044Y

66 BARBARA 137D 1930073

V D A R CEDAR WIND 8111  
66 BARBARA 56B

AOD	BW	205D	365D	EPDs	BW	WW	YW	MILK
6	80	711	1153		+0.5	+52	+75	+21



Lot 29

2 YR OLD  
29

66 RIGHT TIME 326D 1937174

66 COUNTESS 151B 1819732

AOD	BW	205D	365D	EPDs	BW	WW	YW	MILK
8	74	711	1100		-1.8	+55	+74	+18

## 66 RIGHT TIME 655H

MALE CKM 655H 2177999 MAY 21 2020

LEACHMAN RIGHT TIME v  
BAD LANDS LASSIE 1044Y

V D A R REALLY WINDY 4097 †  
SOUTH FORK COUNTESS 142Z

## WE ASK . . .

That ALL BULLS be taken home right after  
the sale, or picked up within 5 days PLEASE!



151B

DAM OF  
LOT 29



415C

DAM OF  
LOT 30



364C

DAM OF  
LOT 31



Lot 30

2 YR OLD  
30

66 RIGHT TIME 326D 1937174

66 HYALITE HEDY 415C 1867468

AOD	BW	205D	365D	EPDs	BW	WW	YW	MILK
7	72	639	1095		-0.9	+47	+68	+23

## 66 RIGHT TIME 665H

MALE CKM 665H 2178213 MAY 23 2020

LEACHMAN RIGHT TIME †  
BAD LANDS LASSIE 1044Y

BOYD RESUME 9008 †  
BAD LANDS HYALITE HEDY 1109Y



Lot 31

2 YR OLD  
31

66 RIGHT TIME 326D 1937174

66 BLACKBIRD 364C 1867422

AOD	BW	205D	365D	EPDs	BW	WW	YW	MILK
7	81	630	1037		+0.9	+46	+63	+19

## 66 RIGHT TIME 690H

MALE CKM 690H 2178193 MAY 29 2020

LEACHMAN RIGHT TIME †  
BAD LANDS LASSIE 1044Y

66 ALLIANCE 17Z  
DEER RIVER BLACKBIRD 44S



## REFERENCE SIRE

### 66 CHISM 1D

EPDs	BW	WW	YW	MILK	CE	MCE
	+2.0	+78	+114	+6	+5.0	+12.0

19 sons sell

YEARLING SONS SELL AS LOTS 1-8 & 66-74  
TWO YEAR OLD SONS SELL AS LOTS 32 & 33



Lot 32



66  
CHISM  
1D



2 YR OLD  
32

### 66 CHISM 192H

MALE CKM 192H 2171728 APRIL 23 2020

66 CHISM 1D 1929946

STUART CHISM 82A  
66 DUCHESS 249A

66 BARBARA 559B 1815366

BAD LANDS FINAL ANSWER 107W  
SOUTH FORK BARBARA 128X

AOD	BW	205D	365D	EPDs	BW	WW	YW	MILK
8	82	668	1140		+1.6	+59	+85	+12



Lot 33



559B

DAM OF  
LOT 32



648C

DAM OF  
LOT 33

2 YR OLD  
33

### 66 CHISM 473H

MALE CKM 473H 2171862 MAY 03 2020

66 CHISM 1D 1929946

STUART CHISM 82A  
66 DUCHESS 249A

66 LULU 648C 1876727

BAD LANDS ATTRACTION 109Y  
WHS LULU 88L

AOD	BW	205D	365D	EPDs	BW	WW	YW	MILK
7	84	512	999		+1.8	+36	+56	+11

- SIGHT UNSEEN PURCHASES -

YOUR SATISFACTION  
IS GUARANTEED

Contact 66 Ranch Ltd.  
or any of our Sales Staff



Lot 34

2 YR OLD  
34

**66 CEDAR 622H**

MALE CKM 622H 2171908 MAY 15 2020

COLE CREEK CEDAR 1095 1914587

COLE CREEK CEDAR 791  
COLE CREEK JUANADAMERE 77W

66 LASS 170F 2058527

STUART CHISM 82A  
66 LASS 378C

AOD	BW	205D	365D	EPDs	BW	WW	YW	MILK
4	77	594	1107		+0.8	+27	+53	+19



Lot 35

2 YR OLD  
35

**66 CEDAR 678H**

MALE CKM 678H 2171922 MAY 26 2020

COLE CREEK CEDAR 1095 1914587

COLE CREEK CEDAR 791  
COLE CREEK JUANADAMERE 77W

66 ANNE 362F 2058632

HOOVER DAM †  
BAD LANDS ANNE 1090Y

AOD	BW	205D	365D	EPDs	BW	WW	YW	MILK
4	76	659	1139		+1.3	+28	+52	+26



Lot 36

2 YR OLD  
36

**66 CEDAR RIDGE 666H**

MALE CKM 666H 2171919 MAY 23 2020

F-R CEDAR RIDGE 4210 1889691

COLE CREEK CEDAR RIDGE 1V †  
F-R TOTAL LASS 8094

66 BARBARA 440D 1930357

COLE CREEK BLACK CEDAR 46P †  
BAD LANDS BARBARA 1006Y

AOD	BW	205D	365D	EPDs	BW	WW	YW	MILK
6	84	652	1143		+2.2	+43	+73	+22

## REFERENCE SIRE



2 sons sell

**COLE CREEK CEDAR 1095**

MALE IMP 1095C 1914587 FEBRUARY 24 2015

COLE CREEK CEDAR 791 17039944

C H QUANTUM 6247  
COLE CREEK CLOVA JUANADA 44N

COLE CREEK JUANADAMERE 77W 16453067

COLE CREEK JUANADA LAD 81T  
COLE CREEK JUANADAMERE 90P

EPDs	BW	WW	YW	MILK	CE	MCE
	+0.4	+8	+27	+28	+8.0	+6.0

A walking bull purchased from Cole Creek Angus. This bull carries the extra flesh year round. Extreme docility, moderate, great foot. A calving ease bull used on heifers. Bull calves average birthweight is 73 lbs. and heifer calves is 69 lbs.

## REFERENCE SIRE

**F-R CEDAR RIDGE 4210**

MALE DMC 4210B 1889691 MAY 19 2014

COLE CREEK CEDAR RIDGE 1V † 1659099

COLE CREEK BLACK CEDAR 46P †  
COLE CREEK CLOVANADA 49S

F-R TOTAL LASS 8094 1655121

K C F BENNETT TOTAL †  
F-R 60B LASS 1112

EPDs	BW	WW	YW	MILK	CE	MCE
	+0.3	+27	+49	+24	+9.0	+10.0

A walking bull purchased from Fraser's. A calving ease specialist, with extreme docility. Excellent maternal traits from the dam side of this bull. Bull calves average birthweight is 78 lbs. Heifer calves is 73 lbs.

1 son sells



## REFERENCE SIRE

### 66 ALLIANCE 217C

MALE CKM 217C 1867282 APRIL 21 2015

BAD LANDS ALLIANCE 14W 1502297

KMK ALLIANCE 6595 187 †  
BAD LANDS COUNTESS 214M †

BAD LANDS PRIDE 5097R 1270096

BAD LANDS DAQUANTAE 26L  
BAD LANDS PRIDE 859H

EPDs	BW	WW	YW	MILK	CE	MCE
	+3.0	+50	+72	+14	+0.0	+11.0

A walking bull raised by 66 Ranch. Extreme docility, good foot, and as long as a freight train. Pedigree stacked with female makers, keep all the heifer calves. Bull calves average birthweight is 88 lbs. Heifer calves is 80 lbs.

**2 sons sell**



**5097R**  
DAM OF  
66 ALLIANCE  
217C



LEAN ON ME



**151A**  
DAM OF  
LOT 37



**Lot 37**



**45X**  
DAM OF  
LOT 38

2 YR OLD  
**37**

66 ALLIANCE 217C 1867282

66 FANNY 151A 1738824

### 66 ALLIANCE 593H

MALE CKM 593H 2171900 MAY 12 2020

BAD LANDS ALLIANCE 14W  
BAD LANDS PRIDE 5097R

DEER RIVER DESIRE 564W  
BAD LANDS FANNY 114X

AOD	BW	205D	365D	EPDs	BW	WW	YW	MILK
9	82	657	1123		+1.6	+43	+65	+13



**440D**

DAM OF  
LOT 36



**Lot 38**

2 YR OLD  
**38**

66 ALLIANCE 217C 1867282

BAD LANDS ERICA 45X 1555650

### 66 ALLIANCE 602H

MALE CKM 602H 2171905 MAY 14 2020

BAD LANDS ALLIANCE 14W  
BAD LANDS PRIDE 5097R

LOOKOUT CANUCK 65U  
BAD LANDS ERICA 22K

AOD	BW	205D	365D	EPDs	BW	WW	YW	MILK
12	91	643	1062		+4.2	+45	+58	+16

## REFERENCE SIRE

### WCC RESOURCE 406D

MALE XZ 406D 1916082 MARCH 30 2016

S A V RESOURCE 1441<sup>+</sup> 1707295

RITO 707 OF IDEAL 3407 7075<sup>+</sup>  
S A V BLACKCAP MAY 4136<sup>+</sup>

PEAKE ROSETTE 248Y 1637610

CROWFOOT 6758S  
CROWFOOT ROSETTE 6274S

EPDs	BW	WW	YW	MILK	CE	MCE
	+1.1	+51	+103	+26	+11.0	+6.0

A walking bull purchased from Peake Ranching, Steve and Martina Wade. A super deep sided, great footed, Resource bred son. The selection for this bull other than that he was really easy to look at was the dam behind this bull. A Predominant bred cow, sure should give you the females we all strive to produce. Bull calves average birthweight is 83 lbs. Heifer calves is 78 lbs.

**2 sons sell**

CHECK OUR WEBSITE  
**WWW.66RANCHLTD.COM**  
FOR SALE UPDATES

## BULL VIEWING

We welcome you to view the bulls  
before the sale at the Ranch.

Bulls will be available at Bow Slope Auction  
in Brooks on Wednesday, April 20.

## LOOKING FOR LONGEVITY?

A cow at 66 Ranch is under great scrutiny from her first calf and continuing on her entire life at our place. If they show any imperfections with feet, udder or disposition they are culled right there on the spot. Any cow 4 or 5 or 6 has been scrutinized pretty thoroughly. So with that being said, we are pretty proud to have 75 cows that raised bulls in the sale being 6 years old and older, all the way up to 16 years old.



**Lot 39**

2 YR OLD  
**39**

### 66 RESOURCE 629H

MALE CKM 629H 2171909 MAY 16 2020

WCC RESOURCE 406D 1916082

S A V RESOURCE 1441<sup>+</sup>  
PEAKE ROSETTE 248Y

66 COUNTESS 563E 1997654

STUART CHISM 82A  
66 COUNTESS 158B

AOD	BW	205D	365D	EPDs	BW	WW	YW	MILK
5	78	632	1199		+2.1	+53	+101	+20

**563E**

DAM OF  
LOT 39



**Lot 40**

2 YR OLD  
**40**

### 66 RESOURCE 588H

MALE CKM 588H 2171898 MAY 11 2020

WCC RESOURCE 406D 1916082

S A V RESOURCE 1441<sup>+</sup>  
PEAKE ROSETTE 248Y

66 ENCHANTRESS 368E 1997409

COLE CREEK 1100 BLACK 1144  
66 ENCHANTRESS 288B

AOD	BW	205D	365D	EPDs	BW	WW	YW	MILK
5	86	751	1273		+2.3	+54	+100	+24



## REFERENCE SIRE



### KMK ALLIANCE 6595 187

MALE IMP 87J 1191922 † FEBRUARY 01 1999

SITZ ALLIANCE 6595 † 1036949

SITZ TRAVELER 8180 †  
SITZ BARBARAMERE JET 2698

G A R EXT 916 AMF 12921677

N BAR EMULATION EXT †  
G A R BANDO 338

EPDs	BW	WW	YW	MILK	CE	MCE
	+1.6	+58	+96	+24	+3.0	+7.0

Super maternal pedigree, we have had several 187 sired cows at our place last long into their teens. Super uddered, strong footed, deep bodied females to be expected from KMK 187. Bull calves average birthweight is 86 lbs. Heifer calves is 80 lbs.



2 YR OLD  
41

### 66 ALLIANCE 193H

MALE CKM 193H 2178201 ET APRIL 23 2020

KMK ALLIANCE 6595 187 † 1191922

SITZ ALLIANCE 6595 †  
G A R EXT 916 †

BLACK GEM LOVEMERE R 221N 1187111

THREE TREES EVERREADY C55D †  
CROWFOOT LOVEMERE R 9221

AOD	BW	205D	365D	EPDs	BW	WW	YW	MILK
15	80	671	1181		+0.3	+42	+67	+25

## 66 RANCH PAIR SALE

245 HEAD

• 1ST CALVERS • 2ND CALVERS • COWS

MAY 13/22

BOW SLOPE SHIPPING & ONLINE



221N

DAM OF  
LOT 41



## REFERENCE SIRE

### COLE CREEK LIL SEAL 1166

MALE IMP 1166D 1963220 MARCH 03 2016

COLE CREEK BLACK SEAL 1132 17329120

COLE CREEK BLACK SEAL 230  
COLE CREEK 104 JUANADA 35V

COLE CREEK EILEEN PRIDE 72 17329115

COLE CREEK JUANADA GOLD 92P<sup>+</sup>  
COLE CREEK EILEEN PRIDE 99U

EPDs	BW	WW	YW	MILK	CE	MCE
	+3.5	+40	+66	+25	-1.0	+1.0

A walking bull purchased from Cole Creek Angus. Excellent fleshing ability displayed year round. 1166D also has a super foot udder him. Bull calves average birthweight is 82 lbs. Heifer calves is 83 lbs.

**3 sons sell**



**Lot 43**



**Lot 42**

2 YR OLD  
**43**

### 66 LIL SEAL 634H

MALE CKM 634H 2178053 MAY 16 2020

COLE CREEK LIL SEAL 1166 1963220

COLE CREEK BLACK SEAL 1132  
COLE CREEK EILEEN PRIDE 72

66 LASSIE 147C 1867209

BOYD RESUME 9008<sup>+</sup>  
BAD LANDS LASSIE 1016Y

AOD	BW	205D	365D	EPDs	BW	WW	YW	MILK
7	83	683	1101		+1.7	+39	+60	+28



**147C**

DAM OF  
LOT 43

2 YR OLD  
**42**

### 66 LIL SEAL 631H

MALE CKM 631H 2178197 MAY 16 2020

COLE CREEK LIL SEAL 1166 1963220

COLE CREEK BLACK SEAL 1132  
COLE CREEK EILEEN PRIDE 72

66 BB BLOSSOM 190D 1930126

66 ALLIANCE 17Z  
BAD LANDS BB BLOSSOM 5076R

AOD	BW	205D	365D	EPDs	BW	WW	YW	MILK
6	87	694	1150		+3.5	+52	+81	+25



**593D**

DAM OF  
LOT 44



**Lot 44**

2 YR OLD  
**44**

### 66 LIL SEAL 711H

MALE CKM 711H 2178006 JUNE 08 2020

COLE CREEK LIL SEAL 1166 1963220

COLE CREEK BLACK SEAL 1132  
COLE CREEK EILEEN PRIDE 72

66 ANNE 593D 1930474

66 BOBCAT 98B  
66 ANNE 454B

AOD	BW	205D	365D	EPDs	BW	WW	YW	MILK
6	95	707	1068		+3.1	+40	+55	+27

DO YOU CARE ABOUT THE COW  
THAT RAISED YOUR BULL?  
'CAUSE WE SURE DO!



## REFERENCE SIRE



2 sons sell

### HOOVER COUNSELOR N29

MALE IMP 29B 2138143 ET † JANUARY 08 2014

CONNEALY COUNSELOR † 1714725

CONNEALY MENTOR 7374 †  
JAZE OF CONANGA 234

ERICA OF ELLSTON G366 16123322

SYDGEN C C & 7 †  
ERICA OF ELLSTON D184

EPDs	BW	WW	YW	MILK	CE	MCE
	-0.7	+61	+118	+33	+10.0	+5.0

An A.I. sire selected for the strong maternal characteristics that he will bring. His dam G366 according to Landi at Hoover Angus says quote: "likely the best cow that has ever been bred, born, and raised here in our 92 year history." There is a lot said in that statement considering the exceptional cow herd that Hoover Angus is so well known for! You will keep all the daughters. This sire group will add that ease of flesh we are all looking for. Bull calves average birthweight is 81 lbs. Heifer calves is 76 lbs.

YEARLING SON SELLS AS LOT 87



Lot 45

2 YR OLD  
45

### 66 COUNSELOR 645H

MALE CKM 645H 2171913 MAY 18 2020

HOOVER COUNSELOR N29 † 2138143

CONNEALY COUNSELOR †  
ERICA OF ELLSTON G366

BAD LANDS DUCHESS 5033R 1270124

HERO 6267 OF R R 2418 †  
BAD LANDS DUCHESS 77'92

AOD	BW	205D	365D	EPDs	BW	WW	YW	MILK
17	77	709	1182		-1.6	+49	+82	+28



5033R

DAM OF  
LOT 45



## REFERENCE SIRE

### 66 CHISM 398F

MALE CKM 398F 2057599 MAY 02 2018

66 CHISM 1D 1929946

STUART CHISM 82A  
66 DUCHESS 249A

BAD LANDS BLACKCAP 9005W 1502300

H A IMAGE MAKER 0415 +  
BAD LANDS BLACKCAP 121L

EPDs	BW	WW	YW	MILK	CE	MCE
	+2.2	+66	+95	+21	+5.0	+10.0

A walking bull raised by us sired by our infamous CKM 1D. 398F has the power along with the calving ease that 1D passes along to all of his calves. Progeny from 398F are moderate, deep, thick and extremely eye appealing. Bull calves average birthweight is 88 lbs. Heifer calves is 84 lbs.

**3 sons sell**



**26B**

DAM OF  
LOT 47



**Lot 46**

2 YR OLD  
**46**

### 66 CHISM 578H

MALE CKM 578H 2178055 MAY 11 2020

66 CHISM 398F 2057599

66 CHISM 1D  
BAD LANDS BLACKCAP 9005W

66 BB BLOSSOM 74C 1867135

F-R MECHANIC 3025  
66 BB BLOSSOM 511A

AOD	BW	205D	365D	EPDs	BW	WW	YW	MILK
7	84	649	1109		+0.7	+40	+59	+22



**74C**

DAM OF  
LOT 46



**Lot 47**

2 YR OLD  
**47**

### 66 CHISM 620H

MALE CKM 620H 2178196 MAY 14 2020

66 CHISM 398F 2057599

66 CHISM 1D  
BAD LANDS BLACKCAP 9005W

66 LASSIE 26B 1814494

KBJ ROGUE II 203H  
BAD LANDS ERICA 10K

AOD	BW	205D	365D	EPDs	BW	WW	YW	MILK
8	95	715	1221		+3.1	+55	+87	+21



**Lot 48**

2 YR OLD  
**48**

### 66 CHISM 691H

MALE CKM 691H 2177967 MAY 29 2020

66 CHISM 398F 2057599

66 CHISM 1D  
BAD LANDS BLACKCAP 9005W

66 LADY FANNY 496D 1930406

66 THUNDER 308A  
66 LADY FANNY 439B

AOD	BW	205D	365D	EPDs	BW	WW	YW	MILK
6	77	600	1044		+0.4	+43	+66	+21





## REFERENCE SIRE

### F-R 5289 7048E

MALE DMC 7048E 2075671 APRIL 16 2017

CHAPMAN MEMENTO 3607A 1752982

CHAPMAN MEMENTO 0505X  
CHAPMAN G PRIDE 8013U

F-R 9156 LASS 5289 2071458

F-R H6 LAD 9156  
F-R GD LASS 1265

EPDs	BW	WW	YW	MILK	CE	MCE
	-2.6	+29	+46	+26	+16.0	+13.0

A walking bull purchased from the Fraser's. A sleep all night heifer bull, with a little extra growth in him to put more pounds on your calves in the fall. Bull calves average birthweight is 68 lbs. Heifer calves is 69 lbs.

**3 sons sell**



**648F**

DAM OF  
LOT 50



**Lot 49**

2 YR OLD  
**49**

F-R 5289 7048E 2075671

66 DUCHESS 542F 2058710

### 66 MEMENTO 637H

MALE CKM 637H 2171912 MAY 16 2020

CHAPMAN MEMENTO 3607A  
F-R 9156 LASS 5289

COLE CREEK CEDAR 1095  
66 DUCHESS 345D

AOD	BW	205D	365D	EPDs	BW	WW	YW	MILK
4	<b>71</b>	557	1000		-1.6	+18	+33	+25



**251F**

DAM OF  
LOT 51

## BULL MANAGEMENT

We do not believe in pushing our 2 year old or yearling bulls.

They are all carefully grown into herd sires.



**Lot 50**

2 YR OLD  
**50**

F-R 5289 7048E 2075671

66 LASSIE 648F 2064566

AOD	BW	205D	365D	EPDs	BW	WW	YW	MILK
4	<b>73</b>	667	1040		-0.4	+43	+58	+19

### 66 MEMENTO 679H

MALE CKM 679H 2171923 MAY 26 2020

CHAPMAN MEMENTO 3607A  
F-R 9156 LASS 5289

66 CHISM 1D  
SOUTH FORK LASSIE 48Z



**Lot 51**

2 YR OLD  
**51**

F-R 5289 7048E 2075671

66 COUNTESS 251F 2058568

AOD	BW	205D	365D	EPDs	BW	WW	YW	MILK
4	<b>60</b>	540	980		-3.7	+22	+37	+22

### 66 MEMENTO 647H

MALE CKM 647H 2171915 MAY 19 2020

CHAPMAN MEMENTO 3607A  
F-R 9156 LASS 5289

HOOVER DAM †  
66 COUNTESS 289D



**Lot 52**



**Lot 53**

2 YR OLD  
**52**

## 66 REBORN 595H

MALE CKM 595H 2178077 MAY 13 2020

REID ANGUS REBORN 39D 1905494

O C C LEGACY 839L  
REID ANGUS LADY MILNE 60A

66 LASSIE 48B 1805731

CONNELLY THUNDER ‡  
BAD LANDS LASSIE 4008P

AOD	BW	205D	365D	EPDs	BW	WW	YW	MILK
8	87	747	1291		+1.5	+58	+100	+24

2 YR OLD  
**53**

## 66 REBORN 613H

MALE CKM 613H 2178175 MAY 14 2020

REID ANGUS REBORN 39D 1905494

O C C LEGACY 839L  
REID ANGUS LADY MILNE 60A

66 LADY FANNY 568B 1814504

BAD LANDS CANUCK 44Y  
BAD LANDS LADY FANNY 9010W

AOD	BW	205D	365D	EPDs	BW	WW	YW	MILK
8	81	624	1128		+1.6	+45	+78	+19

## REFERENCE SIRE

### REID ANGUS REBORN 39D

MALE REID 39D 1905494 JANUARY 20 2016

O C C LEGACY 839L 1193688

O C C ECHELON 857E ‡  
O C C DIXIE ERICA 960E

REID ANGUS LADY MILNE 60A 1730663

REID ANGUS ADVANTAGE 11U ‡  
REID ANGUS LADY MILNE 21X

EPDs	BW	WW	YW	MILK	CE	MCE
	+0.3	+51	+87	+25	+10.0	+9.0

A walking bull purchased from Reid Angus. An OCC Legacy 839L bred bull that will moderate the average cow without sacrificing performance. Easy keeping, sound structured and of course comes with the maternal merit that all OCC breeding carries. Bull calves average birthweight is 78 lbs. Heifer calves is 72 lbs.

**2 sons sell**

**48B**

DAM OF  
LOT 52



**568B**

DAM OF  
LOT 53





## REFERENCE SIRE

### 66 BOBCAT 271B

MALE CKM 271B 1819742 APRIL 20 2014

WK BOBCAT † 1655479

CONNEALY RIGHT ANSWER 746 †  
WK MISS ANGUS 7127

SOUTH FORK LASSIE 13Z 1677095

HIGH VALLEY 4C6 AMBUSH †  
BAD LANDS LASSIE 4008P

EPDs	BW	WW	YW	MILK	CE	MCE
	+0.7	+58	+88	+24	+9.0	+11.0

A walking bull at the ranch raised by us. A Bobcat bred son which will give you the females you want with perfect udder structure, ease of flesh and with a moderate birthweight that can go either on the heifers or the growth that will let you use them on the cows too. Bull calves average birthweight is 81 lbs. Heifer calves is 74 lbs.

**1 son sells**



**Lot 54**

2 YR OLD  
**54**

### 66 BOBCAT 575H

MALE CKM 575H 2178015 MAY 11 2020

WK BOBCAT †  
SOUTH FORK LASSIE 13Z

66 BOBCAT 271B 1819742

F-R CEDAR RIDGE 4210  
66 PRIDE 197C

66 PRIDE 607E 2003371

AOD	BW	205D	365D	EPDs	BW	WW	YW	MILK
5	86	736	1173		+2.0	+60	+91	+24



DOUGIE!!!



**607E**

DAM OF  
LOT 54

## 66 RANCH LTD. WANTS TO HELP YOU!

We at 66 Ranch want to assist you in getting top dollar for your fall calves and feeders.

Please contact us if this is of interest to you.

A premium dollar paid on 66 Ranch sired cattle.



## REFERENCE SIRE

### 66 SEVON SON 402E

MALE CKM 402E 2009831 ET APRIL 30 2017

COLE CREEK SEVEN SON 1394 1844692

COLE CREEK SEVEN SON 67T  
COLE CREEK JUANADALEEN 1240

BAD LANDS BLACKLASS 358N 1171994

LEACHMAN RIGHT TIME †  
ALBERN BLACKLASS 39'87

EPDs	BW	WW	YW	MILK	CE	MCE
	+4.4	+38	+66	+20	-5.0	+5.0

A walking bull raised by 66 Ranch. 402E's dam was one of the best cows in our herd, we finally had to say goodbye to her at age 15. Expect to want to keep all the females. Bull calves average birthweight is 89 lbs. Heifer calves is 81 lbs.

**2 sons sell**

† Indicates at least 1 genetic condition test with a free result



**Lot 55**

2 YR OLD  
**55**

### 66 SEVON SON 663H

MALE CKM 663H 2177953 MAY 22 2020

66 SEVON SON 402E 2009831

COLE CREEK SEVEN SON 1394  
BAD LANDS BLACKLASS 358N

DEER RIVER BARBARA 55W 1500547

S A V 004 DENSITY 4336 †  
DEER RIVER BARBARA 262P

AOD	BW	205D	365D	EPDs	BW	WW	YW	MILK
13	82	664	1127		+2.1	+39	+62	+21



**Lot 56**

2 YR OLD  
**56**

### 66 SEVON SON 662H

MALE CKM 662H 2178137 MAY 22 2020

66 SEVON SON 402E 2009831

COLE CREEK SEVEN SON 1394  
BAD LANDS BLACKLASS 358N

66 IDELETTE 264A 1738911

DEER RIVER CONVERGENCE 68R  
DEER RIVER IDELETTE 352W

AOD	BW	205D	365D	EPDs	BW	WW	YW	MILK
9	88	668	1164		+3.0	+44	+74	+17



**55W**

DAM OF  
LOT 55

**264A**

DAM OF  
LOT 56





## REFERENCE SIRE

### COLE CREEK SOLID BLACK 948

MALE IMP 948F 2095855 FEBRUARY 07 2018

COLE CREEK RIDGE LINE 1243 17622265

COLE CREEK RIDGE 1340  
COLE CREEK JUANADA MIST 12T

COLE CREEK F02 JUANADA 1411 17040028

COLE CREEK BLACK CEDAR 46P +  
COLE CREEK F0203 JUANADA 37V

EPDs	BW	WW	YW	MILK	CE	MCE
	+2.7	+40	+68	+24	+5.0	+4.0

A walking bull at the ranch purchased from Cole Creek Angus. This bull can convert brown grass into pounds. One of the easiest keeping walking bulls we have. After touring Cole Creek cow herd multiple times, 948F's dam is one of our favorites there. Keep all the heifer calves they will be good ones. Bull calves average birthweight is 85 lbs. Heifer calves is 79 lbs.

**2 sons sell**

YEARLING SON SELLS AS LOT 122



**Lot 57**

2 YR OLD  
**57**

### 66 SOLID BLACK 616H

MALE CKM 616H 2178576 MAY 14 2020

COLE CREEK SOLID BLACK 948 2095855

COLE CREEK RIDGE LINE 1243  
COLE CREEK F02 JUANADA 1411

66 DUCHESS 143A 1738818

BASIN EXCITEMENT +  
DEER RIVER DUCHESS 571U

AOD	BW	205D	365D	EPDs	BW	WW	YW	MILK
9	85	639	1101		+1.3	+38	+63	+23

CALVING EASE BULLS  
BW IN **BOLD** PRINT

## REFERENCE SIRE



**1 son sells**

### S A V RENOVATION 6822

MALE IMP 6822D 1963240 ET + JANUARY 28 2016

S A V RENOWN 3439 + 1887276

RITO 707 OF IDEAL 3407 7075 +  
S A V BLACKCAP MAY 4136 +

S A V MADAME PRIDE 0151 1957560

S A V 004 DENSITY 4336 +  
S A V MADAME PRIDE 0075 +

EPDs	BW	WW	YW	MILK	CE	MCE
	+2.2	+70	+126	+17	+6.0	+4.0

An A.I. sire selected for the strong maternal value of the dam that raised Renovation, as well as the maternal and paternal grand dams. You will expect the females out of Renovation to be in your herd a long time. And the bull calves sired by Renovation are a very consistent front end group of bulls, which will be expected to be passed on to your steer calves. Bull calves average birthweight is 85 lbs. Heifer calves is 81 lbs.



**143A**

DAM OF  
LOT 57

**4048B**

DAM OF  
LOT 58



2 YR OLD  
**58**

### 66 RENOVATION 590H

MALE CKM 590H 2171899 MAY 11 2020

S A V RENOVATION 6822 + 1963240

S A V RENOWN 3439 +  
S A V MADAME PRIDE 0151

66 BLACKBIRD 4048B 1805795

SOUTH FORK GAME DAY 87X  
DEER RIVER BLACKBIRD 181U

AOD	BW	205D	365D	EPDs	BW	WW	YW	MILK
8	<b>73</b>	490	983		-1.0	+31	+62	+14

## REFERENCE SIRE

### 66 BOBCAT 21F

MALE CKM 21F UNREGISTERED APRIL 13 2018

66 BOBCAT 271B 1819742

WK BOBCAT +  
SOUTH FORK LASSIE 13Z

66 MIDDLEBROOK 380C 1867438

66 ALLIANCE 17Z  
DEER RIVER MIDDLEBROOK 383W

EPDs	BW	WW	YW	MILK	CE	MCE
	+3.1	+58	+92	+23	+2.0	+9.5

ESTIMATED EPDs

A walking bull we used that after turnout our Angus Association said we could not register the calves off of him because Malissa and Association could not come to an agreement of who the sire was to 21F. We still to this day believe he is a Bobcat son of ours, but through DNA the Angus Association says differently. These bulls are purebred but, unfortunately they can not be sold as registered cattle. Sorry for any inconvenience! We can print off papers for you for your home records if you need them. Bull calves average birthweight is 86 lbs.

**3 sons sell**



**Lot 59**

2 YR OLD  
**59**

### 66 BOBCAT 651H

MALE CKM 651H UNREGISTERED MAY 29 2020

66 BOBCAT 21F

66 BOBCAT 271B  
66 MIDDLEBROOK 380C

COLE CREEK JUANADAMERE 826 1963237

COLE CREEK RIDGE LINE 1243  
COLE CREEK JUANADAMERE 108V

AOD	BW	205D	365D	EPDs	BW	WW	YW	MILK
6	88	728	1233		N/A			



STAND BY THE MAPLE LEAF, EH!



**Lot 60**

2 YR OLD  
**60**

### 66 BOBCAT 654H

MALE CKM 654H UNREGISTERED MAY 21 2020

66 BOBCAT 21F

66 BOBCAT 271B  
66 MIDDLEBROOK 380C

66 ZARA 587D 1935996

COLE CREEK SEVEN SON 1394  
DEER RIVER ZARA 439W

AOD	BW	205D	365D	EPDs	BW	WW	YW	MILK
6	92	621	1081		N/A			



**Lot 61**

2 YR OLD  
**61**

### 66 BOBCAT 709H

MALE CKM 709H UNREGISTERED JUNE 05 2020

66 BOBCAT 21F

66 BOBCAT 271B  
66 MIDDLEBROOK 380C

66 DUCHESS 411D 1930333

VISION UNANIMOUS 1418  
SOUTH FORK DUCHESS 233X

AOD	BW	205D	365D	EPDs	BW	WW	YW	MILK
6	88	631	1152		N/A			

**411D**

DAM OF  
LOT 61





## REFERENCE SIRE



1 son sells

### MOGCK ENTICE

MALE IMP 2577E 2077758 † JANUARY 31 2017

SYDGEN ENHANCE † 2028564

SYDGEN EXCEED 3223 †  
SYDGEN RITA 2618

MOGCK ERICA 2255 † 18334720

MOGCK SURE SHOT 253  
MOGCK ERICA 2162

EPDs	BW	WW	YW	MILK	CE	MCE
	+2.3	+78	+144	+32	+3.0	-2.0

An A.I. sire used at 66 Ranch. Entice brings a lot of great traits to the table. Exceptional growth, phenotype, docility and end product merit. A real strong sire group with exceptional weaning weights. Bull calves average birthweight is 85 lbs. Heifer calves is 81 lbs.

† Indicates at least 1 genetic condition test with a free result



Lot 62

2 YR OLD  
62

### 66 ENTICE 581H

MALE CKM 581H 2171896 MAY 11 2020

MOGCK ENTICE † 2077758

SYDGEN ENHANCE †  
MOGCK ERICA 2255 †

SOUTH FORK ROSEBUD 238Y 1626600

DEER RIVER 68 CONVERGENCE 91U  
DEER RIVER ROSEBUD 479W

AOD	BW	205D	365D	EPDs	BW	WW	YW	MILK
11	78	650	1121		+0.2	+51	+86	+28



161Z

DAM OF  
LOT 63



2 sons sell

### BROOKING FIREBRAND 6068

MALE JSTN 68D 1906246 † JANUARY 31 2016

BROOKING BANK NOTE 4040 † 1776488

CONNELLY EARNAN 076E †  
E A ROSE 918

BROOKING ANNIE K 390 1764389

S A V BEST INTEREST 0136 †  
SOO LINE ANNIE K 9165

EPDs	BW	WW	YW	MILK	CE	MCE
	+3.2	+62	+100	+25	+1.0	+9.0

An A.I. sire chosen because of his perfect foot. Not to mention Firebrands dam is picture perfect. Deep, thick, pretty headed along with a picture perfect udder. Very exceptional phenotype to these Firebrand bred cattle. Bull calves average birthweight is 85 lbs. Heifer calves is 81 lbs.



Lot 63

2 YR OLD  
63

### 66 FIREBRAND 604H

MALE CKM 604H 2171906 MAY 14 2020

BROOKING FIREBRAND 6068 † 1906246

BROOKING BANK NOTE 4040 †  
BROOKING ANNIE K 390

SOUTH FORK BONNIE 161Z 1677231

GDAR GAME DAY 449 †  
BAD LANDS BONNIE 108X

AOD	BW	205D	365D	EPDs	BW	WW	YW	MILK
10	88	693	1221		+2.5	+54	+92	+24



2 YR OLD  
**64**

## 66 FIREBRAND 618H

MALE CKM 618H 2171907 MAY 14 2020

BROOKING FIREBRAND 6068 † 1906246

BROOKING BANK NOTE 4040 †  
BROOKING ANNIE K 390

SOUTH FORK BLACKBIRD 227X 1592387

DEER RIVER 165R NITRO 315T  
DEER RIVER BLACKBIRD 668U

AOD	BW	205D	365D	EPDs	BW	WW	YW	MILK
12	93	726	1122		+4.1	+52	+75	+24



## REFERENCE SIRE



1 son sells

## SYDGEN ENHANCE

MALE IMP 5209C 2028564 † JANUARY 27 2015

SYDGEN EXCEED 3223 † 17501893

SYDGEN GOOGOL †  
SYDGEN FOREVER LADY 1255

SYDGEN RITA 2618 17405676

SYDGEN LIBERTY GA 8627 †  
FOX RUN RITA 9308

EPDs	BW	WW	YW	MILK	CE	MCE
	+0.4	+70	+138	+33	+8.0	+10.0

An A.I. sire selected to bring many traits we all are searching for. Moderate birth with an EPD score of -0.2, to a very respectable YW EPD of +136. A very high fertility score on this bull, with exceptional docility, at +37 EPD score. These cattle are really demonstrating that natural ease of flesh to work in tough conditions. A real around solid sire here. Bull calves average birthweight is 82 lbs. Heifer calves is 75 lbs.

227X

DAM OF  
LOT 64



## 66 RANCH FALL BULL SALE

- COMING 2 YEAR OLD BULLS FROM OUR APRIL CALVING PROGRAM
- BRED HEIFERS • 2ND CALVERS

DECEMBER 7/22

BOW SLOPE SHIPPING & ONLINE



505D

DAM OF  
LOT 65



Lot 65

2 YR OLD  
**65**

SYDGEN ENHANCE † 2028564

66 DUCHESS 505D 1936968

## 66 ENHANCE 576H

MALE CKM 576H 2171585 MAY 11 2020

SYDGEN EXCEED 3223 †  
SYDGEN RITA 2618

HILLTOP TRUE GRIT 9202  
66 DUCHESS 81B

AOD	BW	205D	365D	EPDs	BW	WW	YW	MILK
6	71	716	1093		-1.1	+55	+87	+29





## YEARLINGS



Lot 66

YEARLING  
66

**66 CHISM 184J**

MALE CKM 184J 2231480 APRIL 25 2021

66 CHISM 1D 1929946

STUART CHISM 82A  
66 DUCHESS 249A

66 ZARA 510A 1760854

BAD LANDS FORTE 16U  
BAD LANDS ZARA 205M

AOD	BW	205D	EPDs	BW	WW	YW	MILK
9	84	714		+3.0	+52	+85	+15

510A

DAM OF  
LOT 66



222A

DAM OF  
LOT 67

## REFERENCE SIRE



19 sons sell

**66 CHISM 1D**

MALE CKM 1D 1929946 APRIL 03 2016

STUART CHISM 82A 1736988

S CHISM 6175 †

STUART MISS ROSE 22U

66 DUCHESS 249A 1738898

BAD LANDS DAQUANTAE 26L

BAD LANDS DUCHESS 9025W

EPDs	BW	WW	YW	MILK	CE	MCE
	+2.0	+78	+114	+6	+5.0	+12.0

A walking bull raised at 66 Ranch. What a fortunate thing happening to us with this bull! He checks all the boxes, very moderate birth, great performance, and awesome looking female progeny, great scrotal, feet are superb, natural ease of flesh. We are very, very high on these 1D bred progeny. The rancher's kind of cattle out of this bull! Bull calves average birthweight is 82 lbs. Heifer calves is 77 lbs.

YEARLING SONS SELL AS LOTS 1-8 & 66-74  
TWO YEAR OLD SONS SELL AS LOTS 32 & 33



Lot 67

YEARLING  
67

**66 CHISM 17J**

MALE CKM 17J 2231424 APRIL 15 2021

66 CHISM 1D 1929946

STUART CHISM 82A  
66 DUCHESS 249A

66 BARBARA 222A 1750252

APEX WINDY 078 †

BAD LANDS BARBARA 10X

AOD	BW	205D	EPDs	BW	WW	YW	MILK
9	73	749		+0.2	+61	+87	+17

SAVE ON FUEL! VIEW BULL VIDEO & FEET PHOTOS ONLINE - VISIT 66RANCHLTD.COM



**Lot 68**

**YEARLING  
68**

**66 CHISM 155J**

MALE CKM 155J 2231469 APRIL 24 2021

66 CHISM 1D 1929946

STUART CHISM 82A  
66 DUCHESS 249A

66 LASSIE 21B 1805716

BAD LANDS FORTE 406X  
BAD LANDS LASSIE 1138Y

AOD	BW	205D	EPDs	BW	WW	YW	MILK
8	77	730		+0.5	+58	+90	+18



**Lot 69**

**YEARLING  
69**

**66 CHISM 46J**

MALE CKM 46J 2231437 APRIL 18 2021

66 CHISM 1D 1929946

STUART CHISM 82A  
66 DUCHESS 249A

66 B B BLOSSOM 250B 1805913

66 ALLIANCE 17Z  
BAD LANDS BB BLOSSOM 5076R

AOD	BW	205D	EPDs	BW	WW	YW	MILK
8	72	735		+0.9	+70	+108	+16



**107E**

DAM OF  
LOT 70



**Lot 70**

**134C**

DAM OF  
LOT 71



**Lot 71**

**YEARLING  
70**

**66 CHISM 43J**

MALE CKM 43J 2231435 APRIL 18 2021

66 CHISM 1D 1929946

STUART CHISM 82A  
66 DUCHESS 249A

66 BLACKBIRD 107E 1997164

66 ALLIANCE 17Z  
DEER RIVER BLACKBIRD 14P

AOD	BW	205D	EPDs	BW	WW	YW	MILK
5	77	666		+1.7	+61	+90	+13

**YEARLING  
71**

**66 CHISM 154J**

MALE CKM 154J 2231468 APRIL 24 2021

66 CHISM 1D 1929946

STUART CHISM 82A  
66 DUCHESS 249A

66 BLACKBIRD 134C 1867196

66 ALLIANCE 17Z  
DEER RIVER BLACKBIRD 143W

AOD	BW	205D	EPDs	BW	WW	YW	MILK
8	68	621		-0.8	+53	+79	+13





**6049S**

DAM OF  
LOT 72



**175W**

DAM OF  
LOT 73



**233X**

DAM OF  
LOT 74

## BULLS SELL IN CATALOG ORDER

Updated weights & scrotal  
measurements available Sale Day



**Lot 72**

YEARLING  
**72**

**66 CHISM 161J**

MALE CKM 161J 2231472 APRIL 24 2021

66 CHISM 1D 1929946

STUART CHISM 82A  
66 DUCHESS 249A

BAD LANDS COUNTESS 6049S 1338525

KMK ALLIANCE 6595 187 +  
BAD LANDS COUNTESS 353N

AOD	BW	205D	EPDs	BW	WW	YW	MILK
16	75	716		+0.3	+59	+86	+14

YEARLING  
**73**

**66 CHISM 180J**

MALE CKM 180J 2231478 APRIL 25 2021

66 CHISM 1D 1929946

STUART CHISM 82A  
66 DUCHESS 249A

DEER RIVER DUCHESS 175W 1521677

DEER RIVER PINEBANK 20T  
DEER RIVER DUCHESS 343T

AOD	BW	205D	EPDs	BW	WW	YW	MILK
13	83	730		+0.0	+51	+76	+14



**Lot 74**

YEARLING  
**74**

**66 CHISM 224J**

MALE CKM 224J 2231491 APRIL 27 2021

66 CHISM 1D 1929946

STUART CHISM 82A  
66 DUCHESS 249A

SOUTH FORK DUCHESS 233X 1585226

DEER RIVER CONVERGENCE 68R  
DEER RIVER DUCHESS 455P

AOD	BW	205D	EPDs	BW	WW	YW	MILK
12	93	759		+3.1	+62	+91	+13



YEARLING  
**75**

WK BOBCAT † 1655479

66 BLACKBIRD 9022G 2125157

## 66 BOBCAT 49J

MALE CKM 49J 2231439 APRIL 18 2021

CONNEALY RIGHT ANSWER 746 †  
WK MISS ANGUS 7127

HOOVER ELATION M123 †  
66 BLACKBIRD 7085E

AOD	BW	205D	EPDs	BW	WW	YW	MILK
3	<b>69</b>	731		-0.2	+55	+102	+29



**9022G**

DAM OF  
LOT 75



YEARLING  
**76**

WK BOBCAT † 1655479

66 MINA 419G 2129267

## 66 BOBCAT 99J

MALE CKM 99J 2231452 APRIL 21 2021

CONNEALY RIGHT ANSWER 746 †  
WK MISS ANGUS 7127

SHIPWHEEL CHINOOK †  
66 MINA 48A

AOD	BW	205D	EPDs	BW	WW	YW	MILK
3	<b>73</b>	638		-0.6	+48	+83	+25

## REFERENCE SIRE



**3 sons sell**

## WK BOBCAT

IMP 9208W 1655479 FEBRUARY 01 2009

CONNEALY RIGHT ANSWER 746 † 1547517

S A V FINAL ANSWER 0035 †  
HAPPY DELL OF CONANGA 262

WK MISS ANGUS 7127 15797993

SCHURRTOP MC 2500 †  
WK MISS ANGUS 1403 †

EPDs	BW	WW	YW	MILK	CE	MCE
	-0.1	+51	+97	+28	+15.0	+15.0

As proof in the progeny by Bobcat and likewise EPD numbers from a -0.1 BW to an amazing +98 YW. He definitely is a true "Rancher Bull." A calving ease bull that works super on 1st calf heifers and has the performance to use his sons on your cows as well. We went back and sourced more semen on Bobcat after we saw how perfect the udders were on our 8 year old cows out of him. Expect to see more Bobcat progeny in the future. Bull calves average birthweight is 73 lbs. Heifer calves is 68 lbs.

CALVING EASE BULLS  
BW IN **BOLD** PRINT



YEARLING  
**77**

WK BOBCAT † 1655479

66 ANNE 9055G 2129292

## 66 BOBCAT 65J

MALE CKM 65J 2231442 APRIL 20 2021

CONNEALY RIGHT ANSWER 746 †  
WK MISS ANGUS 7127

WERNER FLAT TOP 4136 †  
BAD LANDS ANNE 131X

AOD	BW	205D	EPDs	BW	WW	YW	MILK
3	<b>60</b>	582		-2.7	+40	+76	+28



## REFERENCE SIRE



6 sons sell

### S A V RESOURCE 1441

MALE IMP 1441Y ± 1707295 JANUARY 07 2011

RITO 707 OF IDEAL 3407 7075 ± 2069908

R R RITO 707 DWF ±  
IDEAL 3407 OF 1418 076

S A V BLACKCAP MAY 4136 ± 14739095

S A V 8180 TRAVELER 004 ±  
S A V MAY 2397 ±

EPDs	BW	WW	YW	MILK	CE	MCE
	+4.1	+69	+132	+17	+2.0	+0.0

We've seen Resource at Genex Stud in Billings. A very moderate bull, extra rib x2, and super heel under this bull. Progeny are deep, deep, sided. Females are extremely feminine with super udder structure. Bull calves average birthweight is 86 lbs. Heifer calves is 81 lbs.



Lot 78

YEARLING  
78

S A V RESOURCE 1441 ± 1707295

### 66 RESOURCE 263J

MALE CKM 263J 2231509 APRIL 29 2021

RITO 707 OF IDEAL 3407 7075 ±  
S A V BLACKCAP MAY 4136 ±

66 BLACKBIRD 93E 1997154

STUART CHISM 82A  
66 BLACKBIRD 396A

AOD	BW	205D	EPDs	BW	WW	YW	MILK
5	84	722		+3.0	+62	+110	+16

93E

DAM OF  
LOT 78



Lot 79

YEARLING  
79

S A V RESOURCE 1441 ± 1707295

### 66 RESOURCE 165J

MALE CKM 165J 2231475 APRIL 24 2021

RITO 707 OF IDEAL 3407 7075 ±  
S A V BLACKCAP MAY 4136 ±

66 LILAC 46E 1997106

V D A R CEDAR WIND 8111  
66 LILAC 11C

AOD	BW	205D	EPDs	BW	WW	YW	MILK
5	86	776		+3.3	+67	+119	+22



46E

DAM OF  
LOT 79

## PERFORMANCE DATA

AOD: Age of Dam

BW: Actual Birth Weight

205D: Weaning Weight in lbs. adjusted to 205 days

365D: Yearling Weight in lbs. adjusted to 365 days

## AVERAGE BLACK ANGUS EPDS FOR ALL CALVES BORN IN 2021

EPDs	BW	WW	YW	MILK	CE	MCE
	+2.0	+51	+89	+23	+3.6	+6.8



*Where Customers  
Become Friends*



**YEARLING**  
**80**

## 66 RESOURCE 42J

MALE CKM 42J 2231434 APRIL 18 2021

S A V RESOURCE 1441 ± 1707295

RITO 707 OF IDEAL 3407 7075 ±  
S A V BLACKCAP MAY 4136 ±

BAD LANDS GERTIE 1146Y 1615451

BAD LANDS ALLIANCE 44T  
BAD LANDS GERTIE 9112W

AOD	BW	205D	EPDs	BW	WW	YW	MILK
11	87	700		+3.5	+60	+101	+18



**YEARLING**  
**82**

## 66 RESOURCE 268J

MALE CKM 268J 2231513 APRIL 29 2021

S A V RESOURCE 1441 ± 1707295

RITO 707 OF IDEAL 3407 7075 ±  
S A V BLACKCAP MAY 4136 ±

SOUTH FORK BLACKLASS 72Z 1677145

BAD LANDS DAQUANTAE 26L  
BAD LANDS BLACKLASS 808H

AOD	BW	205D	EPDs	BW	WW	YW	MILK
10	86	609		+3.2	+45	+88	+17



1146Y - DAM OF LOT 80



92X - DAM OF LOT 81



72Z - DAM OF LOT 82



**YEARLING**  
**81**

## 66 RESOURCE 246J

MALE CKM 246J 2231501 APRIL 28 2021

S A V RESOURCE 1441 ± 1707295

RITO 707 OF IDEAL 3407 7075 ±  
S A V BLACKCAP MAY 4136 ±

SOUTH FORK ROSEBUD 92X 1585331

DEER RIVER SHALOM 270T  
DEER RIVER ROSEBUD 106U

AOD	BW	205D	EPDs	BW	WW	YW	MILK
12	87	689		+4.0	+49	+96	+16

AOD: AGE OF DAM

**DVAuction**  
www.dvauction.com

**BID LIVE ONLINE**

**Create your Bidding Account with DVAuction!**

Go to [www.dvauction.com](http://www.dvauction.com) and click on "Create New Account".

Fill in all fields and accept the Privacy Policy & Terms and Conditions. Click on Create New Account.

On the next screen, click Apply for Bidding.

Choose Option 1) Credit Card Approval or Option 2) Bank Approval

*\* if you are not comfortable providing this info to DVAuction, that is ok! Call Sarah Hasson at 306-681-5340.*

Check your Email for an Account Activation message from DVAuction.

Click this link and you are all ready to go.

On sale day, log in to [www.dvauction.com](http://www.dvauction.com) with your email address and password.

Click the green "View" button beside the 66 Ranch Ltd. 11th Annual Bull Sale. This will take you to the sale site.

Accept the Terms & Conditions (left side of screen) to get your bid button.

Log in 1 hour before sale time to Practice Bid.

**LET US MAKE IT EVEN EASIER FOR YOU!**

Contact Sarah Hasson at 306-681-5340 to get set up by phone

DVAuction Tech Support 402-316-5460





YEARLING  
**83**

## 66 RESOURCE 297J

MALE CKM 297J 2231525 APRIL 30 2021

S A V RESOURCE 1441 ± 1707295

RITO 707 OF IDEAL 3407 7075 ±  
S A V BLACKCAP MAY 4136 ±

BAD LANDS LASSIE 100X 1555719

SANDY CREEK INITIATIVE 52T  
BAD LANDS LASSIE 5140R

AOD	BW	205D	EPDs	BW	WW	YW	MILK
12	92	716		+4.6	+56	+101	+23

**100X**

DAM OF  
LOT 83



PHOTOS & VIDEO DONE - TIME FOR A NAP!

ALL YEARLINGS & 2 YEAR OLDS  
HAVE BEEN SEMEN TESTED &  
BREEDING SOUNDNESS EVALUATED

## Can't make it to the sale? Internet Bidding Available.

To view this sale visit [www.dlms.ca](http://www.dlms.ca), Fill out the registration form located under registration and sign-up for your free user account and select a username and password.

BIDDERS - To be approved as a bidder, Log in to [dlms.ca](http://dlms.ca) and click BUYER APPROVAL tab, select the sale you are interested in bidding at and click sign up.

For more information  
Call DLMS Reps:  
Mark Shologan - 780-699-5082 or  
DLMS Purebred Team 780-991-3025

**DLMS**  
[www.dlms.ca](http://www.dlms.ca)



WELCOME SUNNY DAY IN THE HEIFER PEN



## REFERENCE SIRE



### CONNEALY THUNDER

IMP 587R 1385922 † JANUARY 28 2005

BALDRIDGE KABOOM K243 KCF † 13987017

JAUER 353 TRAVELER 589 27  
PLEASANTA OF CONANGA 736

PARKA OF CONANGA 241 † CAC 13948273

BON VIEW BANDO 598 † CAC  
PARTINA OF CONANGA 6237

EPDs	BW	WW	YW	MILK	CE	MCE
	-1.0	+42	+83	+25	+9.0	+12.0

An A.I sire we are still really excited about. We are really impressed with the thick, deep sided females he has sired. Real Angus looking cattle. Udders are near perfect. The bull calves sired by Thunder definitely have that "extra rib." Super long, deep sided cattle. He sure puts the hip on his calves and yet maintains that calving ease we are all looking for. Appears to be that all around perfect bull! Bull calves average birthweight is 79 lbs. Heifer calves is 74 lbs.



**3066A**

DAM OF  
LOT 84



**536C**

DAM OF  
LOT 85



YEARLING  
**84**

### 66 THUNDER 271J

MALE CKM 271J 2231515 APRIL 29 2021

BALDRIDGE KABOOM K243 KCF †  
PARKA OF CONANGA 241 v

SOUTH FORK GAME DAY 87X  
SOUTH FORK BLACKBIRD 143Y

CONNEALY THUNDER † 1385922

66 BLACKBIRD 3066A 1755561

AOD	BW	205D	EPDs	BW	WW	YW	MILK
9	<b>80</b>	737		+0.6	+45	+82	+22



YEARLING  
**85**

### 66 THUNDER 444J

MALE CKM 444J 2231584 MAY 07 2021

BALDRIDGE KABOOM K243 KCF †  
PARKA OF CONANGA 241 †

BAD LANDS ATTRACTION 109Y  
BAD LANDS ERICA 22K

CONNEALY THUNDER † 1385922

66 ERICA 536C 1876645

AOD	BW	205D	EPDs	BW	WW	YW	MILK
7	80	630		+1.3	+33	+63	+19





YEARLING  
**86**

## 66 THUNDER 421J

MALE CKM 421J 2231573 MAY 06 2021

CONNEALY THUNDER ‡ 1385922

66 ANNE 119B 1805789

BALDRIDGE KABOOM K243 KCF ‡  
PARKA OF CONANGA 241 ‡

BAD LANDS FORTE 406X  
BAD LANDS ANNE 1065Y

AOD	BW	205D	EPDs	BW	WW	YW	MILK
8	<b>77</b>	655		+0.4	+34	+62	+26



**119B**  
DAM OF  
LOT 86



## REFERENCE SIRE



## HOOVER COUNSELOR N29

MALE IMP 29B 2138143 ET ‡ JANUARY 08 2014

CONNEALY COUNSELOR ‡ 1714725

ERICA OF ELLSTON G366 16123322

CONNEALY MENTOR 7374 ‡  
JAZE OF CONANGA 234

SYDGEN C C & 7 ‡  
ERICA OF ELLSTON D184

EPDs	BW	WW	YW	MILK	CE	MCE
	-0.7	+61	+118	+33	+10.0	+5.0

An A.I. sire selected for the strong maternal characteristics that he will bring. His dam G366 according to Landi at Hoover Angus says quote: "likely the best cow that has ever been bred, born, and raised here in our 92 year history." There is a lot said in that statement considering the exceptional cow herd that Hoover Angus is so well known for! You will keep all the daughters. This sire group will add that ease of flesh we are all looking for. Bull calves average birthweight is 81 lbs. Heifer calves is 76 lbs.

TWO YEAR OLD SON SELL AS LOT 45



YEARLING  
**87**

## 66 COUNSELOR 20J

MALE CKM 20J 2231426 APRIL 16 2021

HOOVER COUNSELOR N29 ‡ 2138143

66 BLACKBIRD 53C 1867113

CONNEALY COUNSELOR ‡  
ERICA OF ELLSTON G366

66 ALLIANCE 17Z  
SOUTH FORK BLACKBIRD 361Z

AOD	BW	205D	EPDs	BW	WW	YW	MILK
7	<b>76</b>	618		+0.5	+50	+89	+22



**53C**  
DAM OF  
LOT 87



Lot 88

YEARLING  
88

## 66 KNOW HOW 134J

MALE CKM 134J 2231464 APRIL 23 2021

HOOVER KNOW HOW † 2133228

66 PRIDE 365D 1930293

HOOVER NO DOUBT †  
BLKCP EMPRESS ELLSTON L265

S A V RESOURCE 1441 †  
BAD LANDS PRIDE 1126Y

AOD	BW	205D	EPDs	BW	WW	YW	MILK
6	84	640		+2.5	+54	+114	+18



Lot 89

YEARLING  
89

## 66 KNOW HOW 407J

MALE CKM 407J 2231564 MAY 05 2021

HOOVER KNOW HOW v 2133228

66 LADY BIRD 169D 1930104

HOOVER NO DOUBT †  
BLKCP EMPRESS ELLSTON L265

COLE CREEK SEVEN SON 1394  
SOUTH FORK LADY BIRD 337Z

AOD	BW	205D	EPDs	BW	WW	YW	MILK
6	85	686		+3.3	+47	+93	+22

## REFERENCE SIRE



6 sons sell

## HOOVER KNOW HOW

MALE IMP 67D 2133228 † JANUARY 27 2016

HOOVER NO DOUBT † 1836419

BLKCP EMPRESS ELLSTON L265 17314724

MOGCK BULLSEYE †  
MISS BLACKCAP ELLSTON J2

SYDGEN STORM 8504  
BLKCP EMPRESS ELLSTON J120

EPDs	BW	WW	YW	MILK	CE	MCE
	+3.0	+61	+131	+22	+1.0	+10.0

An A.I. sire selected to be used for the added growth and extra eye appeal that Know How's sire has, Hoover No Doubt. Know How is backed up by a phenomenal cow at Hoover Angus. Know How progeny are expected to correct any udder issues and will not hurt any udders that are already excellent. Bull calves average birthweight are 86 lbs. Heifer calves 80 lbs.



184Z

DAM OF  
LOT 90



Lot 90

YEARLING  
90

## 66 KNOW HOW 362J

MALE CKM 362J 2231549 MAY 03 2021

HOOVER KNOW HOW † 2133228

SOUTH FORK ELINE LASS 184Z 1700074

HOOVER NO DOUBT †  
BLKCP EMPRESS ELLSTON L265

DEER RIVER CONVERGENCE 68R  
DEER RIVER ELINE LASS 409W

AOD	BW	205D	EPDs	BW	WW	YW	MILK
10	83	746		+2.0	+55	+106	+21

VIEW THE CATALOG

VIDEO & FEET PHOTOS ONLINE

66ranchltd.com - dvauction.com - dlms.ca





YEARLING  
**91**

## 66 KNOW HOW 158J

MALE CKM 158J 2231471 APRIL 24 2021

HOOVER KNOW HOW ‡ 2133228

66 LULU 648C 1876727

HOOVER NO DOUBT ‡  
BLKCP EMPRESS ELLSTON L265  
BAD LANDS ATTRACTION 109Y  
WHS LULU 88L

AOD	BW	205D	EPDs	BW	WW	YW	MILK
7	89	654		+3.3	+42	+85	+19



YEARLING  
**92**

## 66 KNOW HOW 200J

MALE CKM 200J 2231485 APRIL 26 2021

HOOVER KNOW HOW ‡ 2133228

66 IDELETTE 331E 1997374

HOOVER NO DOUBT ‡  
BLKCP EMPRESS ELLSTON L265  
COLE CREEK BLACK CEDAR 46P ‡  
SOUTH FORK IDELETTE 437Z

AOD	BW	205D	EPDs	BW	WW	YW	MILK
5	79	627		+0.8	+37	+80	+17

**648C**

DAM OF  
LOT 91



**411D**

DAM OF  
LOT 93



YEARLING  
**93**

## 66 KNOW HOW 319J

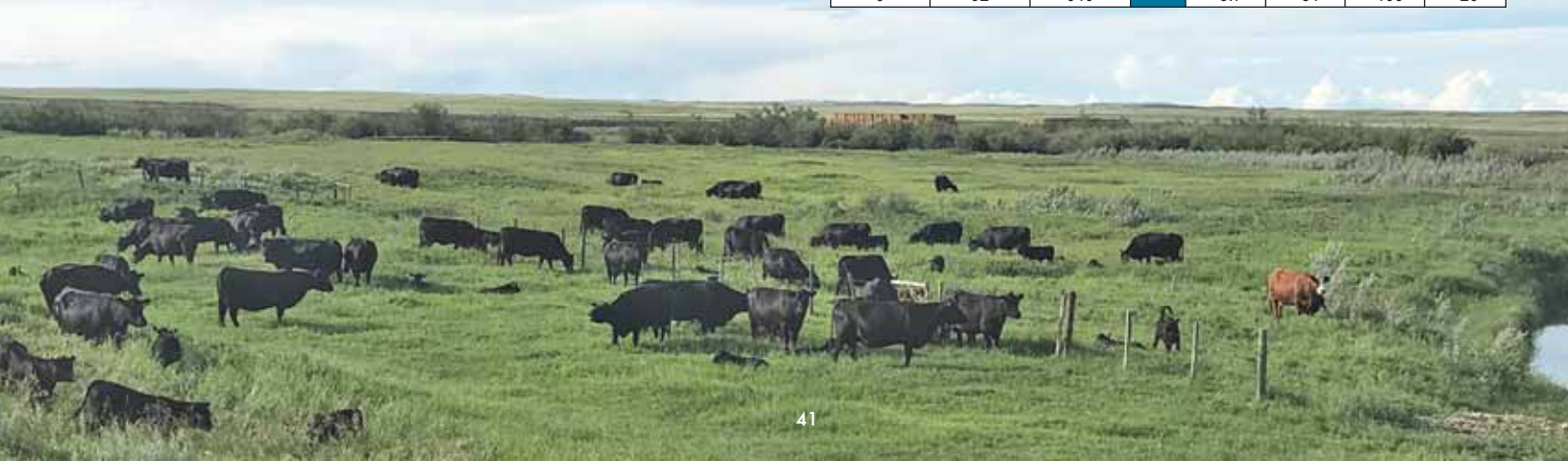
MALE CKM 319J 2231534 MAY 01 2021

HOOVER KNOW HOW ‡ 2133228

66 DUCHESS 411D 1930333

HOOVER NO DOUBT ‡  
BLKCP EMPRESS ELLSTON L265  
VISION UNANIMOUS 1418 ‡  
SOUTH FORK DUCHESS 233X

AOD	BW	205D	EPDs	BW	WW	YW	MILK
6	92	640		+3.7	+51	+100	+20





## REFERENCE SIRE



8 sons sell

### HF RISKY BUSINESS 135G

MALE HAMI 135G 2093092 JANUARY 28 2019

HA COWBOY UP 5405 † 1937042

HA OUTSIDE 3008  
HA BLACKCAP LADY 1602 †

HF TIBBIE 282A 1753795

HF TIGER 5T †  
HF TIBBIE 103T

EPDs	BW	WW	YW	MILK	CE	MCE
	+1.7	+70	+124	+21	+10.0	+8.0

An extremely deep sided walking bull purchased from Hamilton Farms. We selected him for his calving ease and extremely good performance. His dam is a favorite at Hamilton's, a moderate framed cow with an excellent level udder. We sadly lost 135G through the winter to an injury, fortunately though we have semen in the tank to utilize his genetics for years to come. Bull calves average birthweight is 79 lbs. Heifer calves is 76 lbs.



Lot 95



Lot 94

YEARLING  
94

HF RISKY BUSINESS 135G 2093092

66 ROSEBUD 168F 2058523

AOD	BW	205D	EPDs	BW	WW	YW	MILK
4	77	829		+0.9	+76	+125	+15

### 66 COWBOY UP 9J

MALE CKM 9J 2231422 APRIL 14 2021

HA COWBOY UP 5405 †  
HF TIBBIE 282A

66 CHISM 1D  
SOUTH FORK ROSEBUD 51X

YEARLING  
95

HF RISKY BUSINESS 135G 2093092

66 BARBARA 494C 1867541

AOD	BW	205D	EPDs	BW	WW	YW	MILK
7	73	687		-0.9	+52	+87	+18

### 66 COWBOY UP 16J

MALE CKM 16J 2231423 APRIL 15 2021

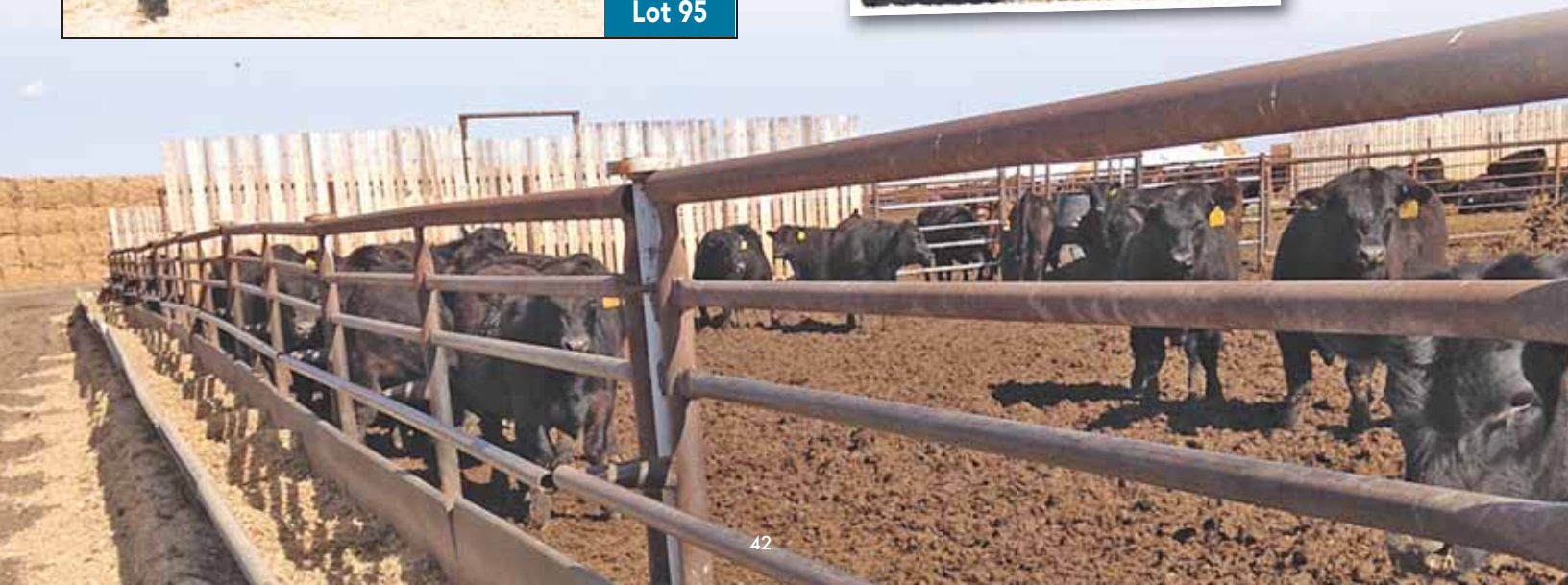
HA COWBOY UP 5405 †  
HF TIBBIE 282A

S A V REGISTRY 2831 †  
BAD LANDS BARBARA 9079W



168F

DAM OF  
LOT 94







Lot 96

YEARLING  
96

## 66 COWBOY UP 189J

MALE CKM 189J 2231482 APRIL 25 2021

HF RISKY BUSINESS 135G 2093092

HA COWBOY UP 5405 †  
HF TIBBIE 282A

66 COUNTESS 280F 2064572

STUART CHISM 82A  
BAD LANDS COUNTESS 6046S

AOD	BW	205D	EPDs	BW	WW	YW	MILK
4	87	717		+3.7	+64	+106	+15



Lot 98

YEARLING  
98

## 66 COWBOY UP 8J

MALE CKM 8J 2231421 APRIL 14 2021

HF RISKY BUSINESS 135G 2093092

HA COWBOY UP 5405 †  
HF TIBBIE 282A

66 DELIA 375F 2058636

STUART CHISM 82A  
66 DELIA 241C

AOD	BW	205D	EPDs	BW	WW	YW	MILK
4	65	668		+0.0	+59	+97	+17



Lot 97

YEARLING  
97

## 66 COWBOY UP 75J

MALE CKM 75J 2231446 APRIL 20 2021

HF RISKY BUSINESS 135G 2093092

HA COWBOY UP 5405 †  
HF TIBBIE 282A

66 BLOSSOM 80E 1997144

COLE CREEK CEDAR RIDGE 181  
SYDGEN BLOSSOM 1369

AOD	BW	205D	EPDs	BW	WW	YW	MILK
5	93	777		+3.7	+64	+114	+27



Lot 99

YEARLING  
99

## 66 COWBOY UP 110J

MALE CKM 110J 2231460 APRIL 22 2021

HF RISKY BUSINESS 135G 2093092

HA COWBOY UP 5405 †  
HF TIBBIE 282A

66 LADY FANNY 87F 2075591

66 BOBCAT 271B  
66 LADY FANNY 294C

AOD	BW	205D	EPDs	BW	WW	YW	MILK
4	87	665		+3.4	+51	+93	+22



280F - DAM OF LOT 96



80E - DAM OF LOT 97



375F - DAM OF LOT 98



**YEARLING  
100**

## 66 COWBOY UP 273J

MALE CKM 273J 2231517 APRIL 29 2021

HF RISKY BUSINESS 135G 2093092

HA COWBOY UP 5405 ‡  
HF TIBBIE 282A

66 BLACKBIRD 314D 1930241

V D A R CEDAR WIND 8111  
BAD LANDS BLACKBIRD 164X

AOD	BW	205D	EPDs	BW	WW	YW	MILK
6	80	656		+2.0	+53	+93	+21



**YEARLING  
101**

## 66 COWBOY UP 7J

MALE CKM 7J 2231420 APRIL 13 2021

HF RISKY BUSINESS 135G 2093092

HA COWBOY UP 5405 ‡  
HF TIBBIE 282A

66 COUNTESS 294F 2064577

BAD LANDS DAQUANTAE 26L  
BAD LANDS COUNTESS 350N

AOD	BW	205D	EPDs	BW	WW	YW	MILK
4	78	644		+0.6	+44	+74	+19

**314D**

DAM OF  
LOT 100



**294F**

DAM OF  
LOT 101



PHOTO/VIDEO  
DAYS ARE  
ALL ABOUT  
PATIENCE  
(& DECENT  
WEATHER!)



**THANK YOU**

*Sarah Hasson*

at Golden Thread  
Livestock Images  
for doing such an  
amazing job of taking  
pictures, feet photos  
and videos of the bulls





## REFERENCE SIRE



12 sons sell

### HOOVER DAM

MALE IMP 18U † 1552414 JANUARY 25 2008

SYDGEN C C & 7 † 1552417

S A F CONNECTION †  
SYDGEN FOREVER LADY 4087 †

ERICA OF ELLSTON C124 14851883

TC GRIDIRON 258 †  
ERICA OF ELLSTON V65

EPDs	BW	WW	YW	MILK	CE	MCE
	-0.3	+46	+88	+25	+7.0	+8.0

An A.I. sire we used exclusively on heifers. A real calving ease sire, that produces thick attractive progeny. The females are quite attractive with excellent udders. Bull calves average birthweight is 79 lbs. Heifer calves is 74 lbs.

YEARLING SONS SELL AS LOTS 9-14 & 102-107



Lot 102

YEARLING  
102

### 66 HOOVER DAM 29J

MALE CKM 29J 2231429 APRIL 17 2021

HOOVER DAM † 1552414

SYDGEN C C & 7 †  
ERICA OF ELLSTON C124

66 LOVEMERE R 135G 2116702

SHIPWHEEL CHINOOK †  
66 LOVEMERE R 201C

AOD	BW	205D	EPDs	BW	WW	YW	MILK
3	82	637		+1.6	+54	+96	+24



Lot 103

YEARLING  
103

### 66 HOOVER DAM 305J

MALE CKM 305J 2231528 APRIL 30 2021

HOOVER DAM † 1552414

SYDGEN C C & 7 †  
ERICA OF ELLSTON C124

66 PRIDE 462G 2129276

BAD LANDS DAQUANTAE 26L  
66 PRIDE 197C

AOD	BW	205D	EPDs	BW	WW	YW	MILK
3	98	648		+5.3	+51	+92	+23

135G

DAM OF  
LOT 102



462G

DAM OF  
LOT 103



• THANK YOU TO •

*Rose Currie*  
for cleaning up the bulls

*The Brooks Hotel*  
for putting on an amazing meal

*Jan Lee*  
for designing the catalog



**YEARLING**  
**104**

## 66 HOOVER DAM 66J

MALE CKM 66J 2231443 APRIL 20 2021

HOOVER DAM † 1552414

SYDGEN C C & 7 †  
ERICA OF ELLSTON C124

66 BARBARA 499G 2113007

66 CEDAR WIND 178C  
66 BARBARA 440D

AOD	BW	205D	EPDs	BW	WW	YW	MILK
3	<b>64</b>	616		-1.5	+48	+81	+24



**YEARLING**  
**106**

## 66 HOOVER DAM 413J

MALE CKM 413J 2231569 MAY 06 2021

HOOVER DAM † 1552414

SYDGEN C C & 7 †  
ERICA OF ELLSTON C124

66 PEARL 232G 2121918

BASIN PAYWEIGHT 1682 †  
66 PEARL 208B

AOD	BW	205D	EPDs	BW	WW	YW	MILK
3	<b>82</b>	621		+1.0	+43	+83	+24



**YEARLING**  
**105**

## 66 HOOVER DAM 160J

MALE CKM 160J 2238556 TWIN APRIL 24 2021

HOOVER DAM † 1552414

SYDGEN C C & 7 †  
ERICA OF ELLSTON C124

66 BLACKBIRD 541G 2113014

COLE CREEK SEVEN SON 1394  
DEER RIVER BLACKBIRD 44S

AOD	BW	205D	EPDs	BW	WW	YW	MILK
3	<b>57</b>	584		+1.4	+42	+77	+21



**YEARLING**  
**107**

## 66 HOOVER DAM 354J

MALE CKM 354J 2231544 MAY 03 2021

HOOVER DAM † 1552414

SYDGEN C C & 7 †  
ERICA OF ELLSTON C124

66 DUCHESS 199G 2121895

V D A R CEDAR WIND 8111  
66 DUCHESS 494E

AOD	BW	205D	EPDs	BW	WW	YW	MILK
3	<b>69</b>	657		-0.8	+44	+83	+25



**499G** - DAM OF LOT 104



**541G** - DAM OF LOT 105



**199G** - DAM OF LOT 107



## REFERENCE SIRE



1 son sells

### HOOVER ELATION M123

MALE IMP 0123A 1947549 † FEBRUARY 13 2013

BASIN EXCITEMENT † 1688134

BASIN EXPEDITION R156 †  
BASIN LADY S532 AK

PRIDE OF ELLSTON K68 16999081

SYDGEN C C & 7 †  
PRIDE OF ELLSTON D58

EPDs	BW	WW	YW	MILK	CE	MCE
	-1.9	+49	+101	+31	+12.0	+13.0

An A.I. sire we chose to use on our heifers. Super calving ease bull with an added punch of performance. The sire on the dam side of Elation is a cow making machine. Sydgen CC & 7 makes beautiful uddered females. Bull calves average birthweight is 73 lbs. Heifer calves is 69 lbs.



## REFERENCE SIRE



3 sons sell

### BUFORD REBOUND C837

MALE IMP 837C 2113711 ET † NOVEMBER 11 2015

S A V RENOWN 3439 † 1887276

RITO 707 OF IDEAL 3407 7075 †  
S A V BLACKCAP MAY 4136 †

BUFORD ELBA 811Y 17266488

S A V BISMARCK 5682 †  
S A V ELBA 4436

EPDs	BW	WW	YW	MILK	CE	MCE
	+2.0	+76	+136	+15	+3.0	+6.0

An A.I. sire selected for calving ease, performance and maternal strength. Rebound is a Renown son out of a Bismarck dam. He should give us cattle with strong foot structure, heavy steer calves and females that will go to the replacement pen. Bull calves average birthweight is 80 lbs. Heifer calves is 79 lbs.



Lot 108

YEARLING  
108

HOOVER ELATION M123 † 1947549

66 COUNTESS 398G 2129260

### 66 ELATION 306J

MALE CKM 306J 2231529 APRIL 30 2021

BASIN EXCITEMENT †  
PRIDE OF ELLSTON K68

V D A R CEDAR WIND 8111  
66 COUNTESS 588E

AOD	BW	205D	EPDs	BW	WW	YW	MILK
3	71	699		-1.3	+51	+93	+29



398G

DAM OF  
LOT 108



Lot 109

YEARLING  
109

BUFORD REBOUND C837 † 2113711

66 COUNTESS 158B 1805822

### 66 REBOUND 71J

MALE CKM 71J 2231444 APRIL 20 2021

S A V RENOWN 3439 †  
BUFORD ELBA 811Y

CONNEALY THUNDER †  
BAD LANDS COUNTESS 14X

AOD	BW	205D	EPDs	BW	WW	YW	MILK
8	98	789		+4.2	+68	+122	+22



Lot 110

**YEARLING  
110**

## 66 REBOUND 78J

MALE CKM 78J 2231447 APRIL 20 2021

BUFORD REBOUND C837 ‡ 2113711

S A V RENOWN 3439 ‡  
BUFORD ELBA 811Y

66 FANNY 151A 1738824

DEER RIVER DESIRE 564W  
BAD LANDS FANNY 114X

AOD	BW	205D	EPDs	BW	WW	YW	MILK
9	80	702		+1.4	+56	+99	+14



Lot 111

**YEARLING  
111**

## 66 REBOUND 262J

MALE CKM 262J 2231508 TWIN APRIL 29 2021

BUFORD REBOUND C837 ‡ 2113711

S A V RENOWN 3439 ‡  
BUFORD ELBA 811Y

66 HAPPENINGS 6001D 1935968

SOUTH FORK DESIRE 214Y

AOD	BW	205D	EPDs	BW	WW	YW	MILK
6	56	661		+0.5	+53	+94	+16



158B - DAM OF LOT 109



151A - DAM OF LOT 110



6001D - DAM OF LOT 111



## YOU COULD WIN A 66 RANCH HEIFER

The Lot Number of each bull sold will go into a draw after the sale.

The drawn Lot # wins!

**OPTION A** - Pick one out of a pen of 10 hand selected 66 Ranch open commercial heifers to take home and put in your herd

or

- **OPTION B** - A \$1,000 cheque made out to you!





## REFERENCE SIRE



### 66 CHISM 48G

MALE CKM 48G 2116722 APRIL 16 2019

66 CHISM 1D 1929946

STUART CHISM 82A  
66 DUCHESS 249A

66 ROSEBUD 43B 1819716

66 ALLIANCE 17Z  
SOUTH FORK ROSEBUD 153X

EPDs	BW	WW	YW	MILK	CE	MCE
	-0.7	+49	+75	+13	+11.0	+16.0

A walking bull at the ranch raised by us, a "1D" son. 1D has quickly risen to the top at our place. Raising sons like 48G that are just the right type. Both 1D and 48G stamp their calves the same. Deep, soggy, soft made, moderate, easy to look at Angus cattle. Foot quality is very strong, udders on our milking daughters have been absolutely outstanding! 48G's dam is about as good as they come, expect females out of the 48G sons to remain in the herd for a long time. Bull calves average birthweight is 78 lbs. Heifer calves is 72 lbs.



### YEARLING 112

### 66 CHISM 145J

MALE CKM 145J 2238278 APRIL 24 2021

66 CHISM 48G 2116722

66 CHISM 1D  
66 ROSEBUD 43B

66 BARBARA 388F 2058640

66 ALLIANCE 222B  
66 BARBARA 156B

AOD	BW	205D	EPDs	BW	WW	YW	MILK
4	80	699		+1.0	+50	+79	+16



### 388F

DAM OF  
LOT 112

### 165F

DAM OF  
LOT 113



### YEARLING 113

### 66 CHISM 187J

MALE CKM 187J 2238282 APRIL 25 2021

66 CHISM 48G 2116722

66 CHISM 1D  
66 ROSEBUD 43B

66 BRIDE 165F 2058521

V D A R CEDAR WIND 8111  
66 BRIDE 327D

AOD	BW	205D	EPDs	BW	WW	YW	MILK
4	80	703		+0.1	+51	+80	+18



### YEARLING 114

### 66 CHISM 114J

MALE CKM 114J 2238273 APRIL 23 2021

66 CHISM 48G 2116722

66 CHISM 1D  
66 ROSEBUD 43B

66 DUCHESS 468F 2058684

COLE CREEK SEVEN SON 1394  
SOUTH FORK DUCHESS 16X

AOD	BW	205D	EPDs	BW	WW	YW	MILK
4	78	662		+1.1	+40	+69	+14



**Lot 115**

**YEARLING  
115**

## 66 RIGHT TIME 281J

MALE CKM 281J 2231522 APRIL 29 2021

66 RIGHT TIME 326D 1937174

LEACHMAN RIGHT TIME †  
BAD LANDS LASSIE 1044Y

66 PRIDE 274C 1867336

BAD LANDS ALLIANCE 14W  
BAD LANDS PRIDE 5075R

AOD	BW	205D	EPDs	BW	WW	YW	MILK
7	78	709		+0.7	+58	+84	+16



**Lot 116**

**YEARLING  
116**

## 66 RIGHT TIME 199J

MALE CKM 199J 2231484 APRIL 26 2021

66 RIGHT TIME 326D 1937174

LEACHMAN RIGHT TIME †  
BAD LANDS LASSIE 1044Y

66 LADY 442C 1867495

HOOVER DAM †  
BAD LANDS LADY 223M

AOD	BW	205D	EPDs	BW	WW	YW	MILK
7	81	688		+0.1	+46	+74	+21

## REFERENCE SIRE

### 66 RIGHT TIME 326D

MALE CKM 326D 1937174 APRIL 25 2016

LEACHMAN RIGHT TIME † 779510

N BAR EMULATION EXT †  
LEACHMAN ERICA 0025

BAD LANDS LASSIE 1044Y 1655922

BAD LANDS ALLIANCE 14W  
BAD LANDS LASSIE 5124R

EPDs	BW	WW	YW	MILK	CE	MCE
	+0.5	+58	+79	+19	+3.0	+9.0

A walking bull raised at 66 Ranch. What a maternal powerhouse!! Leachman Right Time on top and the dam is one of the best Alliance bred females at the Ranch. Longevity from the Right Time, we have Right Time cows last until 17 years old at our place. The Alliance will give you the perfect udders you are looking for as well as the extreme docility we all like. The neat thing with Alliance bred into the Right Time, is this sire has great scrotal, with that, the longevity will be passed onto his progeny. Bull calves average birthweight is 81 lbs. Heifer calves is 77 lbs.

**12 sons sell**

TWO YEAR OLD SONS SELL AS LOTS 23-31



**Lot 117**

**YEARLING  
117**

## 66 RIGHT TIME 234J

MALE CKM 234J 2231495 APRIL 27 2021

66 RIGHT TIME 326D 1937174

LEACHMAN RIGHT TIME †  
BAD LANDS LASSIE 1044Y

66 PRINCESS 42D 1929981

SOUTH FORK CONVERGENCE 217Y  
SOUTH FORK PRINCESS 37Z

AOD	BW	205D	EPDs	BW	WW	YW	MILK
6	76	702		+1.1	+56	+84	+20



**274C - DAM OF LOT 115**



**442C - DAM OF LOT 116**



**42D - DAM OF LOT 117**



## REFERENCE SIRE

### BULL'S EYE COMMAND 78F

MALE BLC 78F 2056624 APRIL 12 2018

BALDRIDGE COMMAND C036 ‡ 2038043

EF COMMANDO 1366 ‡  
BALDRIDGE BLACKBIRD A030

DEER RIVER IDELETTE 137N 1174776

DEER RIVER TRAVELER 132F  
DEER RIVER IDELETTE 139H

EPDs	BW	WW	YW	MILK	CE	MCE
	+0.5	+45	+78	+20	+8.0	+12.0

A walking bull purchased from C & L Beasley Cattle. We selected this calving ease bull for his strong maternal presence, his dam at 17 years old still had a perfect udder and perfect feet. The feet were definitely passed on to her son, we knew we had to own 78F when we saw him standing on the concrete, a perfect foot under this bull! We used him exclusively on first calf heifers, he is a "heifer bull." Bull calves average birthweight is 77 lbs. Heifer calves is 70 lbs.

**4 sons sell**



**137N**

DAM OF  
BULLS EYE  
COMMAND  
78F



78F FEET



DAM 137N



**Lot 118**

YEARLING  
**118**

### 66 COMMAND 129J

MALE CKM 129J 2236314 APRIL 23 2021

BULL'S EYE COMMAND 78F 2056624

BALDRIDGE COMMAND C036 v  
DEER RIVER IDELETTE 137N

66 JANESEA 454G 2129274

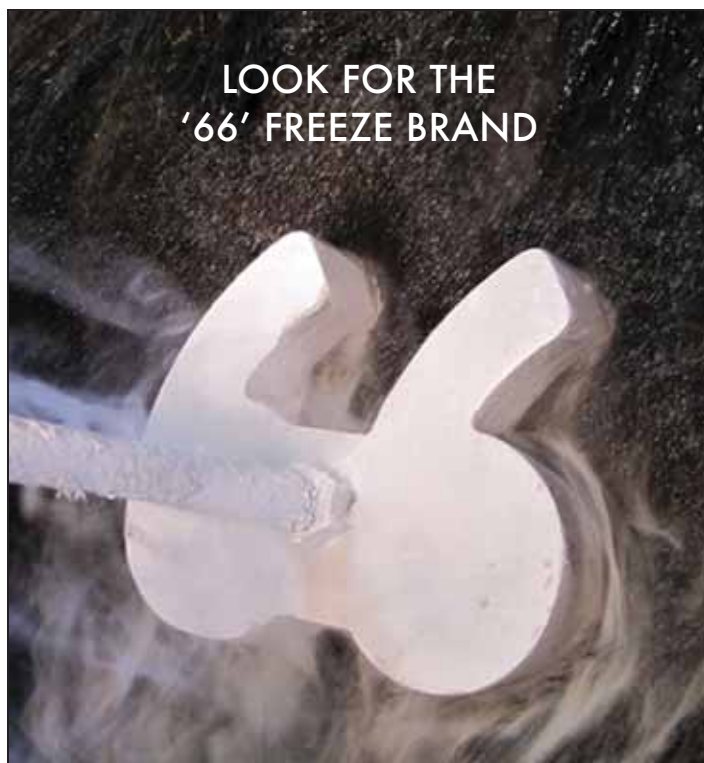
COLE CREEK CEDAR 1095  
66 JANESEA 398E

AOD	BW	205D	EPDs	BW	WW	YW	MILK
3	<b>78</b>	721		+1.0	+48	+81	+21



**454G**

DAM OF  
LOT 118



LOOK FOR THE  
'66' FREEZE BRAND



**Lot 119**

YEARLING  
**119**

### 66 COMMAND 131J

MALE CKM 131J 2236315 APRIL 23 2021

BULL'S EYE COMMAND 78F 2056624

BALDRIDGE COMMAND C036 ‡  
DEER RIVER IDELETTE 137N

66 COUNTESS 235G 2121921

66 ALLIANCE 17Z  
BAD LANDS COUNTESS 163X

AOD	BW	205D	EPDs	BW	WW	YW	MILK
3	83	734		+3.8	+61	+104	+23



Lot 120

YEARLING  
120

**66 COMMAND 64J**

MALE CKM 64J 2236311 APRIL 19 2021

BULL'S EYE COMMAND 78F 2056624

BALDRIDGE COMMAND C036 †  
DEER RIVER IDELETTE 137N

66 HEROINE 438G 2113001

WCC RESOURCE 406D  
BAD LANDS HEROINE 44X

AOD	BW	205D	EPDs	BW	WW	YW	MILK
3	81	670		+1.9	+51	+87	+23



Lot 121

YEARLING  
121

**66 COMMAND 108J**

MALE CKM 108J 2236313 APRIL 22 2021

BULL'S EYE COMMAND 78F 2056624

BALDRIDGE COMMAND C036 †  
DEER RIVER IDELETTE 137N

66 PRINCESS 215G 2121903

HOOVER DAM †  
BAD LANDS PRINCESS 1143Y

AOD	BW	205D	EPDs	BW	WW	YW	MILK
3	77	643		+1.2	+46	+77	+21



438G - DAM OF LOT 120



215G - DAM OF LOT 121



94F - DAM OF LOT 122

CALVING EASE BULLS BW IN **BOLD**

## REFERENCE SIRE

**COLE CREEK SOLID BLACK 948**

MALE IMP 948F 2095855 FEBRUARY 07 2018

COLE CREEK RIDGE LINE 1243 17622265

COLE CREEK RIDGE 1340  
COLE CREEK JUANADA MIST 12T

COLE CREEK F02 JUANADA 1411 17040028

COLE CREEK BLACK CEDAR 46P †  
COLE CREEK F0203 JUANADA 37V

EPDs	BW	WW	YW	MILK	CE	MCE
	+2.7	+40	+68	+24	+5.0	+4.0

A walking bull at the ranch purchased from Cole Creek Angus. This bull can convert brown grass into pounds. One of the easiest keeping walking bulls we have. After touring Cole Creek cow herd multiple times, 948F's dam is one of our favorites there. Keep all the heifer calves they will be good ones. Bull calves average birthweight is 85 lbs. Heifer calves is 79 lbs.

**2 sons sell**

TWO YEAR OLD SON SELLS AS LOT 57

† Indicates at least 1 genetic condition test with a free result



Lot 122

YEARLING  
122

**66 SOLID BLACK 47J**

MALE CKM 47J 2231438 APRIL 18 2021

COLE CREEK SOLID BLACK 948 2095855

COLE CREEK RIDGE LINE 1243  
COLE CREEK F02 JUANADA 1411

66 ROSEBUD 94F 2058476

COLE CREEK AUTOMATIC 325  
66 ROSEBUD 362D

AOD	BW	205D	EPDs	BW	WW	YW	MILK
4	82	653		+1.9	+36	+61	+24



## REFERENCE SIRE

### BAD LANDS ALLIANCE 14W

MALE CDS 14W 1502297 MARCH 24 2009

KMK ALLIANCE 6595 I87 † 1191922

SITZ ALLIANCE 6595 †  
G A R EXT 916 †

BAD LANDS COUNTESS 214M † 1120996

HIGH VALLEY 4C6 AMBUSH †  
BAD LANDS COUNTESS 442D

EPDs	BW	WW	YW	MILK	CE	MCE
	+1.5	+64	+99	+11	+6.0	+14.0

Deep ribbed and huge capacity with growth and thickness along with incredible docility. Super hair coat. A proven herd bull maker in the "Sewall" herd. And many of his daughters producing offspring at 66 Ranch. Bull calves average birthweight is 85 lbs. Heifer calves is 75 lbs.

**3 sons sell**



**Lot 125**



**Lot 123**

YEARLING  
**123**

### 66 ALLIANCE 264J

MALE CKM 264J 2231510 APRIL 29 2021

BAD LANDS ALLIANCE 14W 1502297

KMK ALLIANCE 6595 I87 †  
BAD LANDS COUNTESS 214M †

66 DUCHESS 153D 1930087

COLE CREEK SEVEN SON 1394  
SOUTH FORK DUCHESS 213X

AOD	BW	205D	EPDs	BW	WW	YW	MILK
6	87	754		+2.9	+55	+90	+16

YEARLING  
**125**

### 66 ALLIANCE 74J

MALE CKM 74J 2231445 APRIL 20 2021

BAD LANDS ALLIANCE 14W 1502297

KMK ALLIANCE 6595 I87 D †  
BAD LANDS COUNTESS 214M †

66 QUEEN 79A 1738769

CONNELLY IMPRINT 8317 †  
BAD LANDS QUEEN 365N

AOD	BW	205D	EPDs	BW	WW	YW	MILK
9	80	727		+0.9	+55	+89	+14



**Lot 126**

YEARLING  
**124**

### 66 ALLIANCE 135J

MALE CKM 135J 2231465 APRIL 23 2021

BAD LANDS ALLIANCE 14W 1502297

KMK ALLIANCE 6595 I87 †  
BAD LANDS COUNTESS 214M †

66 IDELETTE 50E 1997109

V D A R CEDAR WIND 8111  
SOUTH FORK IDELETTE 5X

AOD	BW	205D	EPDs	BW	WW	YW	MILK
5	81	690		+0.8	+55	+89	+16

YEARLING  
**126**

### 66 ALLIANCE 45J

MALE CKM 45J 2231436 APRIL 18 2021

BAD LANDS ALLIANCE 14W 1502297

KMK ALLIANCE 6595 I87 †  
BAD LANDS COUNTESS 214M †

66 DUCHESS 5046C 1877311

DEER RIVER IMAGE MAKER 231W  
SOUTH FORK DUCHESS 168X

AOD	BW	205D	EPDs	BW	WW	YW	MILK
7	86	687		+3.1	+54	+85	+13



**50E - DAM OF LOT 124**



**79A - DAM OF LOT 125**



**5046C - DAM OF LOT 126**

## REFERENCE SIRE

### BURNETT CANYON 40G

MALE BBW 40G 2131221 FEBRUARY 28 2019

BURNETT DIESEL 42D 1947780

SOO LINE MOTIVE 9016 †  
BURNETT BLACK LADY 55A

BURNETT CANYON 44E 2010898

STEVENSON ROCKMOUNT RX933 †  
BURNETT CANYON 15C

EPDs	BW	WW	YW	MILK	CE	MCE
	+2.9	+45	+80	+23	+1.0	-1.0

A walking bull purchased from Burnett Angus. As we have come to know with 40G, his progeny should have high libido. 40G is a high fertile, breeding machine! Every time you are in a breeding pasture with him in it he is chasing a cow around, even if there is no cows showing heat he is still pursuing one, my kind of bull! Bull calves average birthweight is 77 lbs. Heifer calves is 78 lbs.

**1 son sells**



**248F**

DAM OF  
LOT 127



## REFERENCE SIRE



**6 sons sell**

### HF SYNDICATE 213Z

MALE HAMI 213Z 1706210 ET FEBRUARY 04 2012

CONNEALY CONSENSUS 7229 † 1593730

CONNEALY CONSENSUS †  
BLUE LILLY OF CONANGA 16 †

HF MISS BLACKCAP 27R 1274292

TC FREEDOM 104 †  
HF MISS BLACKCAP 50N

EPDs	BW	WW	YW	MILK	CE	MCE
	-1.3	+38	+72	+28	+14.0	+11.0

An A.I. sire we selected for his calving ease and to use for his proven ability to sire the females we are all striving to build. Real good haired cattle, moderate frame, great foot and phenotypically as pretty as they come. Bull calves average birthweight is 78 lbs. Heifer calves is 73 lbs.



**Lot 127**

YEARLING  
**127**

### 66 CANYON 197J

MALE CKM 197J 2238286 APRIL 26 2021

BURNETT CANYON 40G 2131221

BURNETT DIESEL 42D  
BURNETT CANYON 44E

66 BB BLOSSOM 248F 2058567

66 CHISM 1D  
66 BB BLOSSOM 511A

AOD	BW	205D	EPDs	BW	WW	YW	MILK
4	85	694		+1.6	+46	+78	+19



**Lot 128**

YEARLING  
**128**

### 66 SYNDICATE 102J

MALE CKM 102J 2231455 APRIL 22 2021

HF SYNDICATE 213Z 1706210

CONNEALY CONSENSUS 7229 †  
HF MISS BLACKCAP 27R

66 BARBARA 603G 2113029

66 RIGHT TIME 326D  
66 BARBARA 333A

AOD	BW	205D	EPDs	BW	WW	YW	MILK
3	74	733		-0.1	+53	+81	+27

**603G**

DAM OF  
LOT 128







Lot 129

YEARLING  
**129**

## 66 SYNDICATE 272J

MALE CKM 272J 2231516 APRIL 29 2021

HF SYNDICATE 213Z 1706210

66 ERICA 427B 1814316

CONNEALY CONSENSUS 7229 †  
HF MISS BLACKCAP 27R

MF NET RETURN 8197 v  
BAD LANDS ERICA 22K

AOD	BW	205D	EPDs	BW	WW	YW	MILK
8	97	694		+3.6	+42	+73	+24



Lot 131

YEARLING  
**131**

## 66 SYNDICATE 101J

MALE CKM 101J 2231454 APRIL 22 2021

HF SYNDICATE 213Z 1706210

66 BLACKLASS 427G 2129270

CONNEALY CONSENSUS 7229 †  
HF MISS BLACKCAP 27R

BAD LANDS ALLIANCE 14W  
SOUTH FORK BLACKLASS 72Z

AOD	BW	205D	EPDs	BW	WW	YW	MILK
3	78	645		+1.1	+48	+84	+22



Lot 130

YEARLING  
**130**

## 66 SYNDICATE 104J

MALE CKM 104J 2231456 APRIL 22 2021

HF SYNDICATE 213Z 1706210

66 COUNTESS 563E 1997654

CONNEALY CONSENSUS 7229 v  
HF MISS BLACKCAP 27R

STUART CHISM 82A  
66 COUNTESS 158B

AOD	BW	205D	EPDs	BW	WW	YW	MILK
5	90	733		+3.2	+56	+98	+21



Lot 132

YEARLING  
**132**

## 66 SYNDICATE 292J

MALE CKM 292J 2231523 APRIL 30 2021

HF SYNDICATE 213Z 1706210

66 DUCHESS 305G 2112990

CONNEALY CONSENSUS 7229 v  
HF MISS BLACKCAP 27R

66 CEDAR WIND 178C  
66 DUCHESS 153D

AOD	BW	205D	EPDs	BW	WW	YW	MILK
3	71	570		-0.2	+34	+60	+25



427B - DAM OF LOT 129



427G - DAM OF LOT 131



305G - DAM OF LOT 132



**52A**

DAM OF  
LOT 133

**YEARLING  
133**

**66 SYNDICATE 198J**

MALE CKM 198J 2238559 TWIN APRIL 26 2021

HF SYNDICATE 213Z 1706210

CONNELLY CONSENSUS 7229 †  
HF MISS BLACKCAP 27R

66 BLACKBIRD 52A 1738746

S A V FINAL ANSWER 0035 †  
DEER RIVER BLACKBIRD 10W

AOD	BW	205D	EPDs	BW	WW	YW	MILK
9	61	687		-2.9	+34	+60	+24

## REFERENCE SIRE

**66 ALLIANCE 172F**

MALE CKM 172F 2057474 APRIL 23 2018

66 ALLIANCE 17Z 1677098

BAD LANDS ALLIANCE 14W  
BAD LANDS GLENELLA 5041R

BAD LANDS LASSIE 4008P 1201500

BAD LANDS WIDESPREAD 17J †  
BAD LANDS LASSIE 79K

EPDs	BW	WW	YW	MILK	CE	MCE
	+2.5	+54	+86	+20	+1.0	+12.0

A walking bull raised by us, a super long, round and curvy extremely strong footed sire. His dam 4008P was here until she was 15 years old. Pretty good feeling having the longevity bred into your cattle with the known longevity of the 17Z Alliance on the top side of the pedigree as well. Bull calves average birthweight is 82 lbs. Heifer calves is 75 lbs.

**7 sons sell**



**Lot 133**

**321F**

DAM OF  
LOT 134



**155F**

DAM OF  
LOT 135



**Lot 134**



**Lot 135**

**YEARLING  
134**

**66 ALLIANCE 81J**

MALE CKM 81J 2242034 APRIL 20 2021

66 ALLIANCE 172F 2057474

66 ALLIANCE 17Z  
BAD LANDS LASSIE 4008P

66 SG JUMBOLEEN 321F 2058614

HOOVER DAM †  
COLE CREEK SG JUMBOLEEN 1066

AOD	BW	205D	EPDs	BW	WW	YW	MILK
4	84	714		+2.4	+50	+82	+23

**YEARLING  
135**

**66 ALLIANCE 196J**

MALE CKM 196J 2242025 APRIL 26 2021

66 ALLIANCE 172F 2057474

66 ALLIANCE 17Z  
BAD LANDS LASSIE 4008P

66 BLACKBIRD 155F 2058516

V D A R CEDAR WIND 8111  
66 BLACKBIRD 232D

AOD	BW	205D	EPDs	BW	WW	YW	MILK
4	90	716		+3.2	+51	+84	+21



**YEARLING**  
**136**

**66 ALLIANCE 465J**

MALE CKM 465J 2242032 MAY 08 2021

66 ALLIANCE 172F 2057474

66 ALLIANCE 17Z  
BAD LANDS LASSIE 4008P

66 DUCHESS 452F 2058674

F-R ATHABASCA 5051  
66 DUCHESS 162D

AOD	BW	205D	EPDs	BW	WW	YW	MILK
4	84	711		+2.2	+48	+78	+21



**162D**

GRANDAM  
OF  
LOT 136

**YEARLING**  
**137**

**66 ALLIANCE 116J**

MALE CKM 116J 2242045 APRIL 23 2021

66 ALLIANCE 172F 2057474

66 ALLIANCE 17Z  
BAD LANDS LASSIE 4008P

66 IDELETTE 621F 2064549

66 CHISM 1D  
66 IDELETTE 435A

AOD	BW	205D	EPDs	BW	WW	YW	MILK
4	80	712		+1.0	+54	+83	+15



**Lot 138**

**621F**

DAM OF  
LOT 137



**313F**

DAM OF  
LOT 138



**40F**

DAM OF  
LOT 139



**YEARLING**  
**138**

**66 ALLIANCE 285J**

MALE CKM 285J 2242012 APRIL 29 2021

66 ALLIANCE 172F 2057474

66 ALLIANCE 17Z  
BAD LANDS LASSIE 4008P

66 PRINCESS 313F 2058601

HOOVER DAM †  
66 PRINCESS 485D

AOD	BW	205D	EPDs	BW	WW	YW	MILK
4	90	715		+3.1	+53	+89	+21



**8018F**

DAM OF  
LOT 140

**YEARLING**  
**139**

**66 ALLIANCE 394J**

MALE CKM 394J 2242015 MAY 04 2021

66 ALLIANCE 172F 2057474

66 ALLIANCE 17Z  
BAD LANDS LASSIE 4008P

66 LASS 40F 2058447

HOOVER DAM †  
66 LASS 209D

AOD	BW	205D	EPDs	BW	WW	YW	MILK
4	76	643		+0.7	+44	+73	+21



**Lot 140**

**YEARLING**  
**140**

**66 ALLIANCE 166J**

MALE CKM 166J 2242007 APRIL 24 2021

66 ALLIANCE 172F 2057474

66 ALLIANCE 17Z  
BAD LANDS LASSIE 4008P

66 ANNE 8018F 2058500

EF COMMANDO 1366 †  
66 ANNE 6105D

AOD	BW	205D	EPDs	BW	WW	YW	MILK
4	82	627		+1.8	+45	+80	+20

## REFERENCE SIRE



1 son sells

### BROOKING REAL ESTATE 6072

MALE JSTN 72D 1926673 ET FEBRUARY 01 2016

CONNEALY EARNAN 076E † 1767036

CONNEALY CONSENSUS †  
BRAZILA OF CONANGA 3991 839A †

SOO LINE ROSE 1019 † 1605797

SOO LINE MOTIVE 9016 †  
E A ROSE 918

EPDs	BW	WW	YW	MILK	CE	MCE
	+0.6	+57	+109	+24	+1.0	+6.0

An A.I. sire we chose to use for his calving ease on our 1st calf heifers. And the female side is so exciting! We have been through Bar EL Angus cow herd a couple times, the impeccable udders Real Estate puts under his females is absolutely outstanding. Keep all the heifer calves! Bull calves average birthweight is 82 lbs. Heifer calves is 75 lbs.

## REFERENCE SIRE



5 sons sell

### V D A R REALLY WINDY 4097

MALE IMP 4097T 1748115 † JANUARY 05 2007

A A R REALLY WINDY 1205 † 1036963

A A R WINDY RIDGE 362  
A A R LADY KELTON 2170

VDAR BLACKBIRD 2031 14108834

VDAR ENTERPRISE 2059  
VDAR ENVIOUS BLACKBIRD 6060

EPDs	BW	WW	YW	MILK	CE	MCE
	-1.3	+54	+89	+8	+15.0	+11.0

An A.I. sire we have used in the past. We went back to using him again because of the strength of the aged daughters that are in our herd. Real strong udders on the 4097 daughters. R.W. 4097 is an excellent calving ease bull, we use him exclusively on our first calf heifers. Bull calves average birthweight is 75 lbs. Heifer calves is 69 lbs.



Lot 141

YEARLING  
141

### 66 REAL ESTATE 37J

MALE CKM 37J 2231433 APRIL 17 2021

BROOKING REAL ESTATE 6072 1926673

CONNEALY EARNAN 076E †  
SOO LINE ROSE 1019 M1F

66 COUNTESS 502G 2129288

F-R ATHABASCA 5051  
66 COUNTESS 281E

AOD	BW	205D	EPDs	BW	WW	YW	MILK
3	67	625		-1.7	+44	+78	+23



502G

DAM OF  
LOT 141



Lot 142

YEARLING  
142

### 66 REALLY WINDY 63J

MALE CKM 63J 2231441 APRIL 19 2021

V D A R REALLY WINDY 4097 † 1748115

A A R REALLY WINDY 1205 †  
VDAR BLACKBIRD 2031

66 PLUS 13G 2112951

WK BOBCAT †  
66 PLUS 41E

AOD	BW	205D	EPDs	BW	WW	YW	MILK
3	83	686		+1.0	+57	+95	+18



13G

DAM OF  
LOT 142





**YEARLING**  
**143**

## 66 REALLY WINDY 231J

MALE CKM 231J 2231494 APRIL 27 2021

V D A R REALLY WINDY 4097 ‡ 1748115

A A R REALLY WINDY 1205 ‡  
VDAR BLACKBIRD 2031

66 COUNTESS 9039G 2125188

WERNER FLAT TOP 4136 ‡  
66 COUNTESS 503A

AOD	BW	205D	EPDs	BW	WW	YW	MILK
3	<b>82</b>	634		+1.0	+49	+85	+18



**YEARLING**  
**146**

## 66 REALLY WINDY 255J

MALE CKM 255J 2231505 APRIL 28 2021

V D A R REALLY WINDY 4097 ‡ 1748115

A A R REALLY WINDY 1205 ‡  
VDAR BLACKBIRD 2031

66 LASS 643G 2113047

66 BOBCAT 271B  
66 LASS 209D

AOD	BW	205D	EPDs	BW	WW	YW	MILK
3	<b>79</b>	658		+0.2	+52	+85	+16

‡ Indicates at least 1 genetic condition test with a free result  
EPDs in this catalog as of March 21/22



**YEARLING**  
**144**

## 66 REALLY WINDY 228J

MALE CKM 228J 2231492 APRIL 27 2021

V D A R REALLY WINDY 4097 ‡ 1748115

A A R REALLY WINDY 1205 ‡  
VDAR BLACKBIRD 2031

66 BLACKCAP 618G 2119284

66 BOBCAT 272B  
BAD LANDS BLACKCAP 8108U

AOD	BW	205D	EPDs	BW	WW	YW	MILK
3	<b>71</b>	640		+0.3	+47	+80	+14

**9039G**

DAM OF  
LOT 143



**84G**

DAM OF  
LOT 145



**YEARLING**  
**145**

## 66 REALLY WINDY 142J

MALE CKM 142J 2231467 APRIL 24 2021

V D A R REALLY WINDY 4097 ‡ 1748115

A A R REALLY WINDY 1205 ‡  
VDAR BLACKBIRD 2031

66 IDELETTE 84G 2116681

BAD LANDS ALLIANCE 44T  
66 IDELETTE 163E

AOD	BW	205D	EPDs	BW	WW	YW	MILK
3	<b>78</b>	684		+0.2	+55	+89	+13

**THANK YOU**  
**TO JON LATRACE TRUCKING**  
The Latrace Family

## REFERENCE SIRE



3 sons sell

### HOOVER CUT ABOVE P427

MALE IMP 0427C 2245633 † AUGUST 17 2015

BRUNS TOP CUT 373 17680548

BRUNS UPPERCUT 610  
DAKOTA MISS 669 BAF

ERICA OF ELLSTON L5 17312733

CONNELLY COUNSELOR †  
ERICA OF ELLSTON G366

EPDs	BW	WW	YW	MILK	CE	MCE
	-2.2	+51	+98	+39	+13.0	+12.0

An A.I. sire we chose to use for super calving ease, we used him on our heifers and he calved great! The other exciting thing about Cut Above is the daughters that he will leave behind. Daughters at Hoover Angus are showing superior udder quality, easy fleshing ability and deep ribbed, broody, milky females. Bull calves average birthweight is 77 lbs. Heifer calves is 65 lbs.



Lot 148



Lot 149



Lot 147

YEARLING  
147

HOOVER CUT ABOVE P427 † 2245633

66 LASSIE 330G 2125183

AOD	BW	205D	EPDs	BW	WW	YW	MILK
3	70	652		-0.2	+58	+104	+31

### 66 CUT ABOVE 27J

MALE CKM 27J 2245682 APRIL 16 2021

BRUNS TOP CUT 373  
ERICA OF ELLSTON L5

66 ALLIANCE 17Z  
66 LASSIE 48B



330G

DAM OF  
LOT 147

245G

DAM OF  
LOT 149



YEARLING  
148

HOOVER CUT ABOVE P427 † 2245633

66 ROSEBUD 91G 2112970

AOD	BW	205D	EPDs	BW	WW	YW	MILK
3	68	559		-1.9	+30	+60	+28

### 66 CUT ABOVE 39J

MALE CKM 39J 2245683 APRIL 18 2021

BRUNS TOP CUT 373  
ERICA OF ELLSTON L5

F-R ATHABASCA 5051  
66 ROSEBUD 144E

YEARLING  
149

HOOVER CUT ABOVE P427 † 2245633

66 LULU 245G 2125146

AOD	BW	205D	EPDs	BW	WW	YW	MILK
3	83	647		+1.5	+45	+79	+29

### 66 CUT ABOVE 138J

MALE CKM 138J 2245684 APRIL 23 2021

BRUNS TOP CUT 373  
ERICA OF ELLSTON L5

BAD LANDS DAQUANTAE 26L  
66 LULU 648C



*Thanks for the support!*

We want to thank our customers and all who participated in our last bull sale. Your support is greatly appreciated. We look forward to seeing you at our sale. To our new customers, a warm welcome. Whether a bull gets bought or not, we look forward to visiting with all of you after the sale.

*Kelsey, Malissa, Brett and Carter*



JOIN US  
AFTER THE SALE  
FOR A LITTLE  
COUNTRY  
HOSPITALITY

## UPCOMING 66 RANCH SALES

### 66 RANCH PAIR SALE

**MAY 13, 2022** at 1:00 pm  
at Bow Slope Shipping, Brooks, AB

Featuring:

- 50** 66 Ranch registered 2nd calvers with calves at foot  
- Selling as Commercial -
- 45** 66 Ranch registered cows with calves at foot  
- Selling as Commercial -
- 150** fancy black commercial 1st calvers  
with calves at foot NVB

For more details contact Kelsey @ 403-362-0672

### FALL BULL & FEMALE SALE

**DECEMBER 7, 2022** at 1:00 pm  
at Bow Slope Shipping, Brooks, AB

Featuring:

- Coming 2 Year Old Black Angus Bulls  
from our April calving program
- 66 Ranch Commercial Bred Heifers NVB
- 66 Ranch Purebred Black Angus Bred Heifers  
- Selling as Commercial -
- 66 Ranch Commercial 2nd Calvers NVB

Please email or call for details.

Kelsey: 403-362-0672 email: 66@66ranchltd.com

## TERMS & CONDITIONS

**TERMS** - TERMS OF THIS SALE ARE CASH OR CHEQUE PAYABLE IN CANADIAN FUNDS. THE RIGHT TO PROPERTY SHALL NOT PASS UNTIL AFTER SETTLEMENT HAS BEEN MADE. ALL SETTLEMENTS MUST BE MADE WITH THE CLERKS OF THE SALE BEFORE CATTLE WILL BE RELEASED.

**BIDS** - EVERY ANIMAL ENTERING THE RING WILL BE SOLD TO THE HIGHEST BIDDER; AUCTIONEER'S DECISION WILL BE FINAL.

**PURCHASERS RISK** - EACH ANIMAL BECOMES THE RISK OF THE PURCHASER AS SOON AS SOLD. INSURANCE WILL BE AVAILABLE SALE DAY.

**CATTLE INSPECTION** - ALL CATTLE WILL CARRY IDENTIFICATION TAGS CORRESPONDING TO SALE LOT NUMBERS THEY ALSO WILL HAVE R.F.I.D. TAGS.

**ANNOUNCEMENTS** - ERRORS OR OMISSIONS IN THE CATALOG WILL BE ANNOUNCED BEFORE SALE AND ANY CORRECTIONS WILL TAKE PRECEDENCE OVER PRINTED MATTER IN THE CATALOG.

**BREEDING GUARANTEE** - ALL CATTLE ARE SOUND AND RIGHT AND SELL WITH "RESPONSIBLE BREEDER GUARANTEE AND SATISFACTION". IN THE EVENT OF AN UNLIKELY DISPUTE, THE REGULAR TERMS AND CONDITIONS STANDARD WITH THE CANADIAN ABERDEEN ANGUS ASSOCIATION SHALL APPLY. IN ANY CASE, THE SELLER IS NOT RESPONSIBLE FOR MORE THAN THE PRICE THE BULL WAS DECLARED SOLD FOR ON SALE DAY.

**ACCIDENTS** - ANY PERSON ATTENDING THE SALE DOES SO AT THEIR OWN RISK AND RECOGNIZES THAT THERE ARE INHERENT DANGERS. ALTHOUGH EVERY PRECAUTION WILL BE TAKEN TO PROTECT THE SAFETY AND COMFORT OF BUYERS, NEITHER THE SALES MANAGER, AUCTIONEER NOR ANY OWNER ASSUMES ANY RESPONSIBILITY IN THIS MATTER AND DISCLAIMS ANY LIABILITY, LEGAL OR OTHERWISE, IN THE EVENT OF AN ACCIDENT OR LOSS OF PROPERTY.

**LIABILITY** - PURCHASERS MUST LOOK TO THE SELLER OF ANIMAL FOR FULFILLMENT OF ALL GUARANTEES AND REPRESENTATIONS MADE HEREUNDER. BOW SLOPE SHIPPING ASSOCIATION IS ACTING AS AGENT AND ASSUME NO RESPONSIBILITY FOR REPRESENTATIONS MADE BY THE SELLER.

**PHONE, MAIL OR SIGHT UNSEEN BIDS** - ALL BIDS WILL BE IN COMPLETE CONFIDENCE WITH SALES STAFF LISTED OR OWNERS.

PLEASE BRING THIS  
CATALOG WITH  
YOU TO VIEW THE  
BULLS & TO THE SALE





66 RANCH LTD.

BOX 66

DUCHESS, AB T0J 0Z0



RETURN POSTAGE GUARANTEED  
PORT DE RETOUR GARANTI



*11th  
Annual*

# BULL SALE



*Herd run under  
strict range conditions*

[www.66RanchLtd.com](http://www.66RanchLtd.com)

1 PM THURSDAY  
**APRIL 21 2022**

Bow Slope Shipping Association, Brooks, Alberta