

NEW  
LOCATION

# 66 RANCH LTD.

*9th  
Annual*

# BULL SALE

1 PM THURSDAY **APRIL 23** 2020

Bow Slope Shipping Association  
Brooks, Alberta

**110** Yearling Black Angus Bulls  
**46** Two Year Old Black Angus Bulls

Online Bidding at  
[DVAuction.com](http://DVAuction.com)

66 RANCH LTD.  
Kelsey Campbell  
403.362.0672



## 66 RANCH WELCOMES YOU TO OUR 9<sup>TH</sup> ANNUAL SPRING BULL SALE

It is our pleasure to welcome you to our 9th Annual Spring Bull Sale! We would like to thank all of our valued customers and friends for your support and trust in our program and welcome any of you for the first time evaluating our cattle and program.

With mixed feelings a big change this year to our annual sale, is our location. Deciding to try and make our lives a little easier in the busy spring season, we have decided to move our sale back closer to home to Bow Slope Shipping Association in Brooks. We would really like to thank Allen Lively and Darren Shaw and all the super staff at Southern Alberta Livestock Exchange for the past 8 years. An absolute amazing group of people and knowledgeable cattlemen and women around the S.A.L.E. group and team. Moving forward we created great relationships with and will continue to use the services of Frank Jenkins doing our auctioneering and Darren Shaw and Justin Keeley catching bids at our sale.

Our bulls on offer once again have been thoroughly looked over for imperfections similar to our cowherd. We continue to try and improve our herd, which will be passed onto their progeny, for FOOT quality, ease of flesh, fertility, maternal traits, UDDER quality, and performance starting with a moderate birth weight to weaning weights right through to the finished product hanging at the packers. For any of you that are not all that familiar with our operation, we do run a commercial herd of angus cows and finish our steers and heifers that do not enter our commercial female program. So, a lot of consideration of sire selection is based on the carcass traits as well as the foundation traits that we believe to be the most important in creating the perfect cow to raise you calves for 10-15 years.

All our bulls are carefully grown into working ranch bulls at our yard. We do not push our yearlings or 2 year olds and let them grow into working bulls to provide you years of service for your cow herd. If there are any concerns with this not being the fact please let us know.

All bulls, yearlings and 2 year olds, will be semen tested and evaluated prior to the sale by our local vet in Brooks and ready to leave after the sale. If you need us to take the bulls home until a later date please let Kelsey or Malissa know prior to or after the sale, it will be greatly appreciated!

Once again, whether you purchase a bull or just come to evaluate our cattle, please join us after the sale for a "little country hospitality."

Thanks

*Kelsey, Malissa, Brett and Carter*

### IF YOU WERE WONDERING ...

With the recent concerns of COVID-19 and things changing daily, we encourage people to stop by our place and view the bulls prior to sale date. At that time we can discuss options or concerns of purchasing bulls by telephone, internet, proxy bids or by the best way possible, in person at the sale.

As we are all familiar with this situation changing just about hourly, at the time of this writing, we at 66 Ranch will continue to monitor this situation closely as the sale date gets closer and take all necessary precautions and try to make the best decision possible for sale needs when we approach our date.

**We will keep you posted as this matter changes by text and email.  
Please check our website for any updates at [www.66ranchltd.com](http://www.66ranchltd.com).**

Thanks for your patience!

**66**  
**RANCH**  
• LTD. •







9th Annual

# BULL SALE

THURSDAY, APRIL 23, 2020 at 1 PM

Bow Slope Shipping Association - Brooks, Alberta

*Offering* • 46 Two Year Old Black Angus Bulls • 110 Yearling Black Angus Bulls

**VIEWING:** Bulls can be viewed anytime before the sale at the ranch. Bulls will be available for viewing at Bow Slope Shipping Association on Wednesday, April 22.

**PURCHASER'S RISK:** Each animal becomes the risk of the purchaser as soon as sold. Insurance will be available sale day with Canadian Farm Insurance, Jill Wildman 1-780-305-1146.

**BREEDER'S GUARANTEE:** All two year old bulls and yearling bulls will be semen tested and physically examined by our local vet and sold with a breeders guarantee.

**EVERY BULL at the sale will be sold with a 100% satisfaction guarantee.**

**SIGHT UNSEEN:** In the event you are unable to attend the sale or use the online option, bids can be given to sale staff or owners with satisfaction guaranteed.

## TWO YEAR OLD & YEARLING BULLS TO GO RIGHT AFTER THE SALE!!!

*If you need us to take the bulls home until a later date please let Kelsey or Malissa know prior to or after the sale, it will be greatly appreciated!*

## 66 RANCH LTD.

**Kelsey & Malissa Campbell**

Box 66, Duchess, AB

T0J 0Z0

Kelsey - 403-362-0672

Malissa - 403-501-9358

email: 66@66ranchltd.com



Malissa & Kelsey, Carter & Brett

[www.66ranchltd.com](http://www.66ranchltd.com)

### AUCTIONEER:

Frank Jenkins - 403-627-6700

### SALE STAFF: Bow Slope Shipping Association

Lachie McKinnon - 403-362-1825

Erik Christensen - 403-363-9942

Cole Webb - 403-793-5387

Darren Shaw - 403-601-5165

Justin Keeley - 403-627-6534

### ACCOMMODATION:

Heritage Inn & Suites 403-362-8688

Ramada 403-362-6440

## CAN'T MAKE IT ON SALE DAY?

*Our sale will be broadcast online @*

**DVAuction**  
[www.dvauction.com](http://www.dvauction.com)

We are pleased that we will have the services of DV Auction. This will allow you to bid on the bulls via the internet. Of course, we would rather you attend the sale and our hospitality afterwards, but we well know today's world just keeps getting busier and busier! But, if for some reason you cannot attend, this gives you the opportunity to bid on the any animal in the live auction. Please remember to pre-register at [www.dvauction.com](http://www.dvauction.com) 24 hours prior to the sale.

We also have available with this service a live video of every animal in the sale. To view these videos just go to our website at [66ranchltd.com](http://66ranchltd.com) and click on 'view video'. Videos are also available at [dvauction.com](http://dvauction.com). We encourage you if possible to view the cattle at the ranch prior to the sale.

Please contact Kelsey @ 403-362-0672 or Malissa @ 403-501-9358 with any questions or issues with registering for the sale.

## - SALE DAY PHONES -

AUCTION MART 403-362-5521

KELSEY'S CELL 403-362-0672

MALISSA'S CELL 403-501-9358

PLEASE JOIN US  
AFTER THE SALE FOR  
A LITTLE "COUNTRY HOSPITALITY"



**PLEASE NOTE:**

- All two year olds and yearlings are semen tested
- No bulls have been sold prior to the sale
- Bulls are sold in catalogue order
- Updated weights & scrotal measurements will be available Sale day
- 66 Ranch reserves the right to draw 250 straws of semen at our expense and at your convenience on any bull selling in the sale. For in-herd use only.

**NEWELL VETERINARY CLINIC**

The two year old bulls offered for sale by 66 Ranch have all passed a breeding soundness examination and are classified as satisfactory potential breeders.

This year the yearling bulls offered for sale by 66 Ranch have passed a breeding soundness examination and are classified as satisfactory potential breeders. They have scrotal circumference measurements above the minimum requirement recommended by Society of Theriogenology and the Western Canadian Association of Bovine Practitioners.

In my opinion the bulls offered for sale are in excellent health and in ideal body condition.

Sincerely,  
Kirby Finkbeiner, DVM

**RECOMMENDED HEIFER BULLS**

There are probably more than the 56 recommended "Heifer Bulls" at our sale. But we feel confident that the bulls with the **bold print BW** in the catalogue will make for trouble free calving off your 1st calf heifers.

**PERFORMANCE DATA**

- AOD: Age of Dam
- BW: Actual Birth Weight
- 205D: Weaning weight in lbs. adjusted to 205 days
- 365D: Yearling weight in lbs. adjusted to 205 days

**EPD EXPLANATION**

- BW:** Birth weight, a prediction of a sire's ability to transmit birth weight to his progeny
- WW:** Weaning weight, predictor of a sire's ability to transmit weaning growth to his progeny
- YW:** Yearling weight, predictor of a sire's ability to transmit yearling growth to his progeny
- MILK:** A predictor of a sire's genetic merit for milk and mothering ability as expressed in his daughters

The 2018 Angus Average EPDs are as follows and are the numbers to compare the bulls in the catalog to:

**AVERAGE BLACK ANGUS EPDS FOR ALL CALVES BORN IN 2019**

EPDs	BW	WW	YW	MILK	TM	CE	MCE
	+2.1	+47	+83	+22	+45	+3.5	+7.2

*Thank You!!*

**TO OUR 2019 CUSTOMERS**

- 9 Bar Ranch Co. Ltd.\*
- Six A Farms\*
- Marilyn Armstrong\*
- Doug & Nancy Ashley
- Bandura Ranches\*
- Bar I Bar Ranch
- Bildersheim Farms Inc.\*
- Larry & Lila Bird
- Black Eagle Ranch Ltd\*
- Blocks Ranching Ltd\*
- Bogi Ranching\*
- Burton Cattle Co. Ltd\*
- Murray Brown
- Jack Bunny\*

- Burke Creek Ranch Ltd.
- Carter Farms Ltd.\*
- Carolside Ranching\*
- Tim Christianson\*
- Neal Deitz
- Deschamps Ranching Ltd.\*
- Brad & Kelly Deschamps Ltd\*
- Diamond V Ranch\*
- Dick Dick\*
- Jason Dick\*
- Russel Douglass\*
- Foothills Livestock Co-op
- F-R Angus\*
- Franz Friesen\*

- Chancey Guichon
- Granum Colony\*
- Marvin Grant\*
- Myles & Nancy Gray\*
- Curtis & Heather Harbinson
- Haraga Ranches\*
- Tyler Haraga\*
- Hironaka Farms\*
- Blaine Hochstein\*
- Lester Hochstein\*
- Robert Hochstein\*
- Jordy Hudec\*
- Rick Irwin\*
- Jackknife Coulee Ranching
- J4 Ranch\*
- Jenkins Lazy U Ranch\*
- Alan Jones\*
- Trevor Kellington
- K & K Cattle Co.

- Caleb Klassen\*
- Pat Klassen Ranching\*
- Lost Lake Farms
- M & A Matheson\*
- Colter Maloy\*
- Martin Cattle Co.\*
- Bernell Martin\*
- Scott & Sheila Metcalf\*
- Murray Ranches Ltd\*
- Skyler McBride
- John McKee\*
- Norm and Tammy McNeil\*
- Brian Nauta Cattle Ltd.\*
- Northslope Ranching Ltd.\*
- Bill Newton\*
- Carl and Jodi Parsonage\*
- Pekisko Creek Ranch & Cattle Co.
- Bruce Pierson\*
- Quarter Circle JN Ranch Ltd.\*

- Remount Grazing\*
- Rowbotham Ranching
- H & W Rommens Farms\*
- R & W Cattle Co.\*
- Scheibner Feeders
- Carl Scheibner
- Standoff Colony\*
- Sundial Livestock FDRS. Ltd\*
- Tateson Ranching\*
- Max Tateson
- Taylor Enterprises Inc.\*
- Utopia Ranch Ltd.\*
- Welsch Ranching\*
- Billy & Jolene Wenbourne\*
- Wever Farms Ltd\*
- Wildcat Cattle\*
- Wilthe Holdings Inc.
- Yu Cattle Company Inc.\*

\* Repeat customers





# YEARLINGS



Lot 1

LOT 1

## 66 SUPERCHARGER 9005G

MALE CKM 9005G 2116725 APRIL 16 2019

S A V SUPERCHARGER 6813 † 2019463

S A V RECHARGE 3436 †  
S A V MADAME PRIDE 0075 †

66 BLACKBIRD 5048C 1867341

SOUTH FORK DAKOTA GOLD 173Z  
66 BLACKBIRD 3102A

AOD	BW	205D	EPDs	BW	WW	YW	MILK
5	73	673		-1.6	+47	+82	+23

**AGAIN THIS YEAR WITH MOVING THE SALE TO A LATER DATE**

We, along with our veterinarian's advice, believe the yearling bulls will be old enough to semen test prior to the sale. By doing this, hopefully it will make your & our lives easier by the bulls being able to go to their new homes directly after the sale or shortly thereafter.



Lot 2

LOT 2

## 66 SUPERCHARGER 9007G

MALE CKM 9007G 2116888 APRIL 19 2019

S A V SUPERCHARGER 6813 † 2019463

S A V RECHARGE 3436 †  
S A V MADAME PRIDE 0075 †

66 BARBARA 369A 1738997

BOYD RESUME 9008 †  
DEER RIVER BARBARA 51U

AOD	BW	205D	EPDs	BW	WW	YW	MILK
7	74	678		+0.0	+54	+94	+23

LOT 3

## 66 SUPERCHARGER 9016G

MALE CKM 9016G 2119616 APRIL 26 2019

S A V SUPERCHARGER 6813 † 2019463

S A V RECHARGE 3436 †  
S A V MADAME PRIDE 0075 †

66 ROSEBUD 3002A 1760866

DEER RIVER 655R RUBEN 410W  
DEER RIVER ROSEBUD 261W

AOD	BW	205D	EPDs	BW	WW	YW	MILK
7	84	613		+2.1	+47	+77	+21



5048C  
DAM OF  
LOT 1

## REFERENCE SIRE

### S A V SUPERCHARGER 6813

IMP 6813D † 2019463 JANUARY 04 2016

S A V RECHARGE 3436 † 1950649

RITO 707 OF IDEAL 3407 7075 †  
S A V BLACKCAP MAY 4136 †

S A V MADAME PRIDE 0075 † 13592871

S A F 598 BANDO 5175 †  
S A V MADAME PRIDE 8264

BW: 82

EPDs	BW	WW	YW	MILK	TM	CE	MCE
	+2.3	+62	+110	+22	+53	+1.0	+0.0

An A.I. sire we chose with moderate birth weight and added performance. Expect to want to keep all the daughters, his pedigree combines two of the best cows from the S A V program. With Rito 707 in his bloodlines, will give you the feet we expect to be on a Black Angus animal.



8 sons sell



**LOT 4**

**66 SUPERCHARGER 9002G**

MALE CKM 9002G 2116718 APRIL 14 2019

S A V SUPERCHARGER 6813 † 2019463

S A V RECHARGE 3436 †  
S A V MADAME PRIDE 0075 †

SOUTH FORK ROSEBUD 446Z 1677471

BAD LANDS ALLIANCE 326X  
SOUTH FORK ROSEBUD 92X

AOD	BW	205D	EPDs	BW	WW	YW	MILK
8	77	650		+0.7	+42	+75	+22



**LOT 6**

**66 SUPERCHARGER 9032G**

MALE CKM 9032G 2119639 APRIL 29 2019

S A V SUPERCHARGER 6813 † 2019463

S A V RECHARGE 3436 †  
S A V MADAME PRIDE 0075 †

66 BLACKBIRD 4148B 1813929

BAD LANDS ALLIANCE 326X  
DEER RIVER BLACKBIRD 71S

AOD	BW	205D	EPDs	BW	WW	YW	MILK
6	74	622		+1.1	+43	+74	+24



**LOT 5**

**66 SUPERCHARGER 9037G**

MALE CKM 9037G 2119652 APRIL 30 2019

S A V SUPERCHARGER 6813 † 2019463

S A V RECHARGE 3436 †  
S A V MADAME PRIDE 0075 †

BAD LANDS LADY FANNY 1107Y 1656556

S A V WORLDWIDE 9088  
BAD LANDS LADY FANNY 57K

AOD	BW	205D	EPDs	BW	WW	YW	MILK
9	83	719		+2.7	+53	+93	+26

† Indicates at least 1 genetic condition test with a free result

VIEW THE CATALOG  
& VIDEO ONLINE

@ www.66ranchltd.com & www.dvauction.com

**LOOKING FOR LONGEVITY?**

A cow at 66 Ranch is under great scrutiny from her first calf and continuing on her entire life at our place. If they show any imperfections with feet, udder or disposition they are culled right there on the spot. Any cow 4 or 5 or 6 has been scrutinized pretty thoroughly. So with that being said, we are pretty proud to have 74 cows that raised bulls in the sale being 7 years old and older, all the way up to 16 years old.



**1107Y**  
DAM OF  
LOT 5







**LOT  
7**

**66 SUPERCHARGER 9012G**

MALE CKM 9012G 2117006 APRIL 24 2019

S A V SUPERCHARGER 6813 † 2019463

S A V RECHARGE 3436 †  
S A V MADAME PRIDE 0075 †

DEER RIVER IDELETTE 605U 1466196

DEER RIVER RIGHT TIME 145P  
DEER RIVER IDELETTE 136H

AOD	BW	205D	EPDs	BW	WW	YW	MILK
12	72	635		+1.0	+51	+92	+21

**LOT  
8**

**66 SUPERCHARGER 9004G**

MALE CKM 9004G 2112843 APRIL 16 2019

S A V SUPERCHARGER 6813 † 2019463

S A V RECHARGE 3436 †  
S A V MADAME PRIDE 0075 †

SOUTH FORK ZARA 193X 1585236

DEER RIVER CONVERGENCE 68R  
DEER RIVER ZARA 119R

AOD	BW	205D	EPDs	BW	WW	YW	MILK
10	84	633		+1.8	+46	+80	+19

ALL YEARLINGS & 2 YEAR OLDS  
HAVE BEEN SEMEN TESTED &  
BREEDING SOUNDNESS EVALUATED

**BULLS WILL BE SOLD  
IN CATALOG ORDER**

Updated weights & scrotal  
measurements available Sale Day



*Something New!*

After conversations between Malissa and I over the past couple years, we thought being as we were such a maternal based program people may appreciate seeing some photos of our females in our catalogues. These photos may not be the traditional combed up, blown off "Pretty" pictures most people put in their catalogues. These are pictures of our cows in their working clothes.

For any of you that are not completely familiar with our program, we take a photo of all our cows when we tag their newborn calf. This way we can see their bags anytime of the year, and are available to show all of you our cows when their bags are at their fullest, moments after they calve.

Please let us know if these photos are something you enjoy seeing!



# REFERENCE SIRE

## HOOVER DAM

IMP 18U † 1552414 JANUARY 25 2008

SYDGEN C C & 7 † 1552417

S A F CONNECTION †

SYDGEN FOREVER LADY 4087 †

ERICA OF ELLSTON C124 14851883

TC GRIDIRON 258 †

ERICA OF ELLSTON V65

EPDs	BW	WW	YW	MILK	TM	CE	MCE
	+1.9	+56	+93	+22	+50	+6.0	+5.0

An A.I. sire we used exclusively on heifers. A real calving ease sire, that produces thick attractive progeny. The females are quite attractive with excellent udders.

TWO YEAR OLD SON SELLS AS LOT 58



7 sons sell



Lot 9

LOT 9

## 66 HOOVER DAM 71G

MALE CKM 71G 2116899 APRIL 18 2019

HOOVER DAM † 1552414

SYDGEN C C & 7 †

ERICA OF ELLSTON C124

66 G V LASS 75C 1867136

66 ALLIANCE 17Z

SOUTH FORK G V LASS 320Z

AOD	BW	205D	EPDs	BW	WW	YW	MILK
5	84	685		+2.1	+56	+96	+22

LOT 10

## 66 HOOVER DAM 321G

MALE CKM 321G 2119649 APRIL 30 2019

HOOVER DAM † 1552414

SYDGEN C C & 7 †

ERICA OF ELLSTON C124

66 LADY 362C 1867421

V D A R CEDAR WIND 8111

BAD LANDS LADY 8098U

AOD	BW	205D	EPDs	BW	WW	YW	MILK
5	89	645		+3.7	+47	+90	+24



75C  
DAM OF  
LOT 9

CALVING EASE BULLS  
BW IN **BOLD**







**LOT  
11**

**66 HOOVER DAM 185G**

MALE CKM 185G 2116999 APRIL 24 2019

HOOVER DAM † 1552414

SYDGEN C C & 7 †  
ERICA OF ELLSTON C124

66 PEARL 195A 1738858

BAD LANDS ALLIANCE 326X  
BAD LANDS PEARL 1047Y

AOD	BW	205D	EPDs	BW	WW	YW	MILK
7	<b>75</b>	637		-0.1	+39	+70	+25



**LOT  
13**

**66 HOOVER DAM 276G**

MALE CKM 276G 2121548 APRIL 29 2019

HOOVER DAM † 1552414

SYDGEN C C & 7 †  
ERICA OF ELLSTON C124

BAD LANDS BARBARA 116X 1555750

BAD LANDS FORTE 16U  
BAD LANDS BARBARA 5020R

AOD	BW	205D	EPDs	BW	WW	YW	MILK
10	93	654		+3.9	+47	+86	+22



**LOT  
12**

**66 HOOVER DAM 256G**

MALE CKM 256G 2119620 APRIL 27 2019

HOOVER DAM † 1552414

SYDGEN C C & 7 †  
ERICA OF ELLSTON C124

DEER RIVER ROSEBUD 371W 1500746

DEER RIVER COALITION 277S  
DEER RIVER ROSEBUD 291P

AOD	BW	205D	EPDs	BW	WW	YW	MILK
11	<b>70</b>	638		-0.4	+43	+79	+23



**LOT  
14**

**66 HOOVER DAM 107G**

MALE CKM 107G 2116890 APRIL 20 2019

HOOVER DAM † 1552414

SYDGEN C C & 7 †  
ERICA OF ELLSTON C124

66 COUNTESS 223C 1867288

COLE CREEK CEDAR RIDGE 1V †  
66 COUNTESS 320A

AOD	BW	205D	EPDs	BW	WW	YW	MILK
5	<b>78</b>	594		-0.7	+40	+76	+24



## REFERENCE SIRE



2 YEAR OLD SONS SELL AS LOTS 44-46

### 66 CHISM 1D

CKM 1D 1929946 APRIL 03 2016

STUART CHISM 82A 1736988

S CHISUM 6175 †

STUART MISS ROSE 22U

66 DUCHESS 249A 1738898

BAD LANDS DAQUANTAE 26L

BAD LANDS DUCHESS 9025W

BW: 74 205D: 702 365D: 1185

EPDs	BW	WW	YW	MILK	TM	CE	MCE
	+0.5	+78	+121	+10	+49	+8.0	+13.0

A walking bull raised at 66 Ranch. What a fortunate thing happening to us with this bull! He checks all the boxes, very moderate birth, great performance, and awesome looking female progeny, great scrotal, feet are superb, natural ease of flesh. We are very, very high on these 1D bred progeny. The rancher's kind of cattle out of this bull!



Lot 15



Lot 16

LOT  
15

### 66 CHISM 49G

MALE CKM 49G 2116723 APRIL 16 2019

66 CHISM 1D 1929946

STUART CHISM 82A  
66 DUCHESS 249A

66 PRINCESS 153B 1819733

SHIPWHEEL CHINOOK †  
SOUTH FORK PRINCESS 37Z

AOD	BW	205D	EPDs	BW	WW	YW	MILK
6	76	706		-0.4	+68	+107	+19

LOT  
16

### 66 CHISM 95G

MALE CKM 95G 2116885 APRIL 19 2019

66 CHISM 1D 1929946

STUART CHISM 82A  
66 DUCHESS 249A

BAD LANDS BARBARA ROSE 53X 1555660

S A V FINAL ANSWER 0035 †  
RONAN BARBARA ROSE 25M

AOD	BW	205D	EPDs	BW	WW	YW	MILK
10	89	696		+1.8	+66	+107	+13

S A V SUPERCHARGER 6813

HOOVER DAM

66 CHISM 1D

REID ANGUS REBORN 39D

66 RIGHT TIME 326D

COLE CREEK SEVEN SON 139A

COLE CREEK BLACK CEDAR 1100

66 ALLIANCE 217C

STUART CHISM 82A

F-R ATHABASCA 5051

COLE CREEK CEDAR RIDGE 181

66 ALLIANCE 17Z

VIEWLAWN PROSPER 829

66 ALLIANCE 222B

## SIRE REPRESENTED

IN THIS CATALOG

COLE CREEK 1100 BLACK 1144

V D A R CEDAR WIND 8111

COLE CREEK RIDGE LINE 216D

COLE CREEK 7 BLACK 375

EF COMMANDO 1366

F-R CEDAR RIDGE 4210

S A V BISMARCK 568Z

COLE CREEK BLACK CEDAR 46P

F-R MECHANIC 4086

COLE CREEK CEDAR 1095

66 THUNDER 296B

WK BOBCAT

SOUTH FORK CONVERGENCE 217Y

SHIPWHEEL CHINOOK

BASIN PAYWEIGHT 168Z

66 BOBCAT 271B

CONNELLY THUNDER

S A V RESOURCE 1441

66 CEDAR WIND 178C

66 SEVEN SON 26D

HOOVER ELATION M123

HILLTOP TRUE GRIT 920Z

COLE CREEK CEDAR 1346D





Lot 17

LOT 17

**66 CHISM 102G**

MALE CKM 102G 2112851 APRIL 19 2019

66 CHISM 1D 1929946

STUART CHISM 82A  
66 DUCHESS 249A

66 LADY FANNY 496D 1930406

66 THUNDER 308A  
66 LADY FANNY 439B

AOD	BW	205D	EPDs	BW	WW	YW	MILK
4	74	669		+0.0	+59	+97	+16



66 CHISM 1D



2B  
DAM OF LOT 18



Lot 19

LOT 19

**66 CHISM 30G**

MALE CKM 30G 2112837 APRIL 14 2019

66 CHISM 1D 1929946

STUART CHISM 82A  
66 DUCHESS 249A

66 PRIDE 187D 1930123

COLE CREEK SEVEN SON 1394  
SOUTH FORK PRIDE 171Y

AOD	BW	205D	EPDs	BW	WW	YW	MILK
4	87	645		+2.9	+55	+94	+13



Lot 18

LOT 18

**66 CHISM 14G**

MALE CKM 14G 2116715 APRIL 12 2019

66 CHISM 1D 1929946

STUART CHISM 82A  
66 DUCHESS 249A

66 ERICA 2B 1814473

BAD LANDS ALLIANCE 14W  
BAD LANDS ERICA 10K

AOD	BW	205D	EPDs	BW	WW	YW	MILK
6	71	646		-1.2	+61	+96	+11

187D

DAM OF LOT 19





**Lot 20**



**Lot 21**

**LOT 20**

**66 CHISM 104G**

MALE CKM 104G 2112853 APRIL 19 2019

66 CHISM 1D 1929946

STUART CHISM 82A  
66 DUCHESS 249A

COLE CREEK SG JUMBOLEEN 1066 1963233

COLE CREEK RIDGE LINE 1243  
COLE CREEK SG JUMBOLEEN 882

AOD	BW	205D	EPDs	BW	WW	YW	MILK
4	90	700		+2.6	+59	+93	+18

**LOT 21**

**66 CHISM 96G**

MALE CKM 96G 2116886 APRIL 19 2019

66 CHISM 1D 1929946

STUART CHISM 82A  
66 DUCHESS 249A

SOUTH FORK DUCHESS 74Z 1677153

BAD LANDS DAQUANTAE 26L  
BAD LANDS DUCHESS 36K

AOD	BW	205D	EPDs	BW	WW	YW	MILK
8	85	663		+1.4	+51	+76	+15



**1066D**

DAM OF LOT 20



**Lot 22**

**LOT 22**

**66 CHISM 20G**

MALE CKM 20G 2112832 APRIL 13 2019

66 CHISM 1D 1929946

STUART CHISM 82A  
66 DUCHESS 249A

66 COUNTESS 245D 1930180

COLE CREEK BLACK CEDAR 46P<sup>†</sup>  
BAD LANDS COUNTESS 6049S

AOD	BW	205D	EPDs	BW	WW	YW	MILK
4	81	626		+1.2	+59	+95	+14

**74Z**  
DAM OF LOT 21



**520D**

DAM OF LOT 23

**LOT 23**

**66 CHISM 64G**

MALE CKM 64G 2112848 APRIL 17 2019

66 CHISM 1D 1929946

STUART CHISM 82A  
66 DUCHESS 249A

66 MINA 520D 1930424

F-R MECHANIC 3025  
66 MINA 192B

AOD	BW	205D	EPDs	BW	WW	YW	MILK
4	64	619		-2.3	+49	+79	+15





## 2 YEAR OLDS

### REFERENCE SIRE

#### REID ANGUS REBORN 39D

REID 39D 1905494 JANUARY 20 2016

O C C LEGACY 839L 1193688

O C C ECHELON 857E †  
O C C DIXIE ERICA 960E

REID ANGUS LADY MILNE 60A 1730663

REID ANGUS ADVANTAGE 11U †  
REID ANGUS LADY MILNE 21X

8BW: 89 205D: 767 365D: 1327

EPDs	BW	WW	YW	MILK	TM	CE	MCE
	+0.4	+47	+85	+26	+50	+9.0	+8.0

A walking bull purchased from Reid Angus. With OCC Legacy on top of the blood lines, you know you will love his females. Extreme docility and a real chunk of a bull!

**1 son sells**



Lot 24

LOT  
24

#### 66 REBORN 622F

MALE CKM 622F 2057721 MAY 20 2018

O C C LEGACY 839L  
REID ANGUS LADY MILNE 60A

REID ANGUS REBORN 39D 1905494

BAD LANDS LASSIE 1044Y 1655922

BAD LANDS ALLIANCE 14W  
BAD LANDS LASSIE 5124R

AOD	BW	205D	365D	EPDs	BW	WW	YW	MILK
9	91	742	1219		+2.3	+62	+100	+23



1044Y

DAM OF  
LOT 24  
&  
REF SIRE  
66  
RIGHT  
TIME  
326D



231Z

DAM OF  
LOT 25

IT'S THE SERVICE  
AFTER THE SALE THAT COUNTS!

### REFERENCE SIRE

#### 66 RIGHT TIME 326D

CKM 326D 1937174 APRIL 25 2016

LEACHMAN RIGHT TIME † 779510

N BAR EMULATION EXT †  
LEACHMAN ERICA 0025

BAD LANDS LASSIE 1044Y 1655922

BAD LANDS ALLIANCE 14W  
BAD LANDS LASSIE 5124R

BW: 84 205D: 717 365D: 1143

EPDs	BW	WW	YW	MILK	TM	CE	MCE
	+1.4	+66	+95	+21	+54	+2.0	+9.0

A walking bull raised at 66 Ranch. What a maternal powerhouse!! Leachman Right Time on top and the dam is one of the best Alliance bred females at the Ranch. Longevity from the Right Time, we've had Right Time cows last until 17 years old. The Alliance gives you the perfect udders you are looking for as well as the extreme docility we all like. The neat thing with Alliance bred into the Right Time is this sire has great scrotal, passing it onto his progeny.

**2 sons sell**

YEARLING SON SELLS AS LOT 131



Lot 25

LOT  
25

#### 66 RIGHT TIME 636F

MALE CKM 636F 2064600 MAY 23 2018

LEACHMAN RIGHT TIME †  
BAD LANDS LASSIE 1044Y

66 RIGHT TIME 326D 1937174

SOUTH FORK BLACKCAP 231Z 1677294

NLC FEATURE ATTRACTION 3W  
BAD LANDS BLACKCAP 121L

AOD	BW	205D	365D	EPDs	BW	WW	YW	MILK
8	89	660	1090		+3.1	+51	+78	+20



Lot 26

LOT  
26

**66 SEVON SON 190F**

MALE CKM 190F 2057482 APRIL 23 2018

COLE CREEK SEVEN SON 1394 1844692

COLE CREEK SEVEN SON 67T  
COLE CREEK JUANADALEEN 1240

66 BARBARA 333A 1738963

BOYD RESUME 9008 †  
BAD LANDS BARBARA 9061W

AOD	BW	205D	365D	EPDs	BW	WW	YW	MILK
7	87	600	1115		+3.4	+39	+73	+19



Lot 28

LOT  
28

**66 SEVEN SON 260F**

MALE CKM 260F 2057519 APRIL 27 2018

COLE CREEK SEVEN SON 1394 1844692

COLE CREEK SEVEN SON 67T  
COLE CREEK JUANADALEEN 1240

66 TIP TOP 185C 1867245

WK BOBCAT †  
66 TIP TOP 217A

AOD	BW	205D	365D	EPDs	BW	WW	YW	MILK
5	101	617	1087		+4.3	+46	+87	+19



333A

DAM OF  
LOT 26



Lot 27

LOT  
27

**66 SEVON SON 657F**

MALE CKM 657F 2057729 MAY 27 2018

COLE CREEK SEVEN SON 1394 1844692

COLE CREEK SEVEN SON 67T  
COLE CREEK JUANADALEEN 1240

66 ROSETTE 4C 1867065

VIEWLAWN PROSPER 829 †  
66 ROSETTE 219A

AOD	BW	205D	365D	EPDs	BW	WW	YW	MILK
5	96	637	1125		+3.5	+48	+91	+17

**REFERENCE SIRE**

**COLE CREEK SEVEN SON 1394**

IMP 1394B 1844692 FEBRUARY 27 2014

COLE CREEK SEVEN SON 67T 15483012

JUANADA 7 OF P J M  
COLE CREEK CLOVANADA 136M

COLE CREEK JUANADALEEN 1240 16723834

COLE CREEK BLACK CEDAR 46P †  
COLE CREEK JUANADALEEN 51S

EPDs	BW	WW	YW	MILK	TM	CE	MCE
	+5.8	+46	+93	+16	+39	-7.0	+1.0

A walking bull we purchased from Cole Creek Angus in 2015. Goes back on the sire side to some older genetics, Juanada 7 of PJM. On our tour of Cole creek Angus, Malissa and I were absolutely amazed by the quality of females sired by this Juanada bull. Absolutely impeccable udders on those females. Really excited about 1394B because he sure stamped an incredible set of bull calves for this years sale. Very impressive!

**9 sons sell**

YEARLING SONS SELL AS LOTS 132-133



NO BULLS  
HAVE BEEN SOLD  
PRIOR TO THE SALE

† Indicates at least 1 genetic condition test with a free result





Lot 29

LOT 29

**66 SEVON SON 132F**

MALE CKM 132F 2057453 APRIL 21 2018

COLE CREEK SEVEN SON 1394 1844692

COLE CREEK SEVEN SON 67T  
COLE CREEK JUANADALEEN 1240

66 LASSIE 161C 1867221

STUART CHISM 82A  
BAD LANDS LASSIE 127X

AOD	BW	205D	365D	EPDs	BW	WW	YW	MILK
5	86	598	1055		+3.3	+45	+79	+14



Lot 31

LOT 31

**66 SEVON SON 226F**

MALE CKM 226F 2057503 APRIL 25 2018

COLE CREEK SEVEN SON 1394 1844692

COLE CREEK SEVEN SON 67T  
COLE CREEK JUANADALEEN 1240

BAD LANDS FANNY 114X 1555749

KBJ ROGUE II 203H  
BAD LANDS FANNY 322N

AOD	BW	205D	365D	EPDs	BW	WW	YW	MILK
10	99	651	1082		+5.3	+39	+71	+18



Lot 31

LOT 30

**66 SEVON SON 561F**

MALE CKM 561F 2057691 MAY 12 2018

COLE CREEK SEVEN SON 1394 1844692

COLE CREEK SEVEN SON 67T  
COLE CREEK JUANADALEEN 1240

66 PRINCESS 485A 1760977

DEER RIVER IMAGE MAKER 231W  
T Z PRINCESS 3P

AOD	BW	205D	365D	EPDs	BW	WW	YW	MILK
7	94	641	1172		+4.7	+42	+81	+16



Lot 32

LOT 32

**66 SEVEN SON 171F**

MALE CKM 171F 2057473 APRIL 23 2018

COLE CREEK SEVEN SON 1394 1844692

COLE CREEK SEVEN SON 67T  
COLE CREEK JUANADALEEN 1240

66 ROSEBUD 93C 1867153

S A V REGISTRY 2831 †  
SOUTH FORK ROSEBUD 153X

AOD	BW	205D	365D	EPDs	BW	WW	YW	MILK
5	88	572	1059		+2.9	+41	+78	+17



## REFERENCE SIRE



1 son sells

### COLE CREEK BLACK CEDAR 1100

IMP 1100X 1998932 FEBRUARY 11 2010

COLE CREEK BLACK CEDAR 46P † 1605479

C H QUANTUM 6247  
COLE CREEK CLOVA JUANADA 67

COLE CREEK JUANADA BIRD 38N 14227801

HBR ENCORE 0544  
COLE CREEK JUANITA 311

EPDs	BW	WW	YW	MILK	TM	CE	MCE
	+1.6	+34	+61	+28	+45	+1.0	+1.0

An A.I. sire we used on heifers. After calving out over 100+ heifers bred to 1100 we feel he is a "Sleep All Night" heifer bull. Average B.W on bull calves is 79 lbs and 72 lbs on heifers. His progeny are displaying super style with great length and width and as well very attractive Angus cattle.

## BULL MANAGEMENT

We do not believe in pushing our 2 year old bulls or yearlings.

They are all carefully grown into herd sires.



Lot 33

LOT  
33

### 66 BLACK CEDAR 183F

MALE CKM 183F 2057479 APRIL 23 2018

COLE CREEK BLACK CEDAR 1100 1998932

COLE CREEK BLACK CEDAR 46P †  
COLE CREEK JUANADA BIRD 38N

66 COUNTESS 86D 1930023

CONNELLY THUNDER †  
BAD LANDS COUNTESS 163X

AOD	BW	205D	365D	EPDs	BW	WW	YW	MILK
4	81	565	1005		+1.7	+30	+57	+25

## PERFORMANCE DATA

AOD: Age of Dam

BW: Actual Birth Weight

205D: Weaning Weight in lbs. adjusted to 205 days

365D: Yearling Weight in lbs. adjusted to 365 days

## AVERAGE BLACK ANGUS EPDS FOR ALL CALVES BORN IN 2019

EPDs	BW	WW	YW	MILK	TM	CE	MCE
	+2.1	+47	+83	+22	+45	+3.5	+7.2







Lot 34



Lot 35

LOT 34

**66 ALLIANCE 684F**

MALE CKM 684F 2057743 JUNE 07 2018

66 ALLIANCE 217C 1867282

BAD LANDS ALLIANCE 14W  
BAD LANDS PRIDE 5097R

66 TIP TOP 65C 1867126

S A V RESOURCE 1441 †  
BAD LANDS TIP TOP 23X

AOD	BW	205D	365D	EPDs	BW	WW	YW	MILK
5	87	659	1068		+1.8	+47	+75	+17

LOT 35

**66 ALLIANCE 685F**

MALE CKM 685F 2057744 JUNE 07 2018

66 ALLIANCE 217C 1867282

BAD LANDS ALLIANCE 14W  
BAD LANDS PRIDE 5097R

66 DUCHESS 441C 1867494

WILL ROLE MODEL †  
DEER RIVER DUCHESS 383T

AOD	BW	205D	365D	EPDs	BW	WW	YW	MILK
5	82	600	1058		+1.6	+38	+63	+18

**REFERENCE SIRE**

**66 ALLIANCE 217C**

CKM 217C 1867282 APRIL 21 2015

BAD LANDS ALLIANCE 14W 1502297

KMK ALLIANCE 6595 187 †  
BAD LANDS COUNTESS 214M †

BAD LANDS PRIDE 5097R 1270096

BAD LANDS DAQUANTAE 26L  
BAD LANDS PRIDE 859H

BW: 87 205D: 677 365D: 1106

EPDs	BW	WW	YW	MILK	TM	CE	MCE
	+3.3	+52	+74	+12	+38	-2.0	+10.0

A walking bull raised by 66 Ranch. Extreme docility, good foot, and as long as a freight train. Pedigree stacked with female makers, keep all the heifer calves.

**2 sons sell**

5097R

DAM OF  
REF SIRE  
66  
ALLIANCE  
217C

&  
LOT 69



*View the bulls  
anytime before the Sale  
Then join us online  
or by phone!*

# REFERENCE SIRE

## STUART CHISM 82A

EDAM 82A 1736988 FEBRUARY 27 2013

S CHISUM 6175 † 1539796

S ALLIANCE 3313 †  
S GLORIA 464

STUART MISS ROSE 22U 1454180

DMM AMBUSH 03M  
STUART MISS ROSE 12M

BW: 86

EPDs	BW	WW	YW	MILK	TM	CE	MCE
	+2.8	+65	+105	-6	+27	+4.0	+12.0

A walking bull we purchased from Stuart Cattle Station in 2014. 82A is as deep as you will find but yet the calving ease that all ranchers are looking for. One of the most docile bulls we have found. The female side of things is even more exciting. We went to Stuart Ranch and saw both his dam and grandam. The grandam was 12 at that time and after seeing both of them we were determined to own the bull!



4 son sells



Lot 36



Lot 37

LOT 36

### 66 CHISM 217F

MALE CKM 217F 2057497 APRIL 25 2018

STUART CHISM 82A 1736988

S CHISUM 6175 †  
STUART MISS ROSE 22U

66 PRIDE 51C 1867111

66 ALLIANCE 17Z  
SOUTH FORK PRIDE 128Z

AOD	BW	205D	365D	EPDs	BW	WW	YW	MILK
5	88	640	1125		+3.3	+62	+100	+7

LOT 37

### 66 CHISM 8047F

MALE CKM 8047F 2057556 APRIL 29 2018

STUART CHISM 82A 1736988

S CHISUM 6175 †  
STUART MISS ROSE 22U

SOUTH FORK ROSEBUD 85X 1585228

DUNLOUISE COMMANDER BOND †  
DEER RIVER ROSEBUD 458P

AOD	BW	205D	365D	EPDs	BW	WW	YW	MILK
10	98	636	1097		+3.2	+39	+60	+1

AOD: AGE OF DAM

LOT 38

### 66 CHISM 343F

MALE CKM 343F 2057566 APRIL 30 2018

STUART CHISM 82A 1736988

S CHISUM 6175 †  
STUART MISS ROSE 22U

DEER RIVER PLUS 126S 1351115

DEER RIVER 42G MAX 166P  
DEER RIVER ROSEBUD 187P

AOD	BW	205D	365D	EPDs	BW	WW	YW	MILK
14	90	659	1104		+2.6	+49	+83	+8

LOT 39

### 66 CHISM 322F

MALE CKM 322F 2057550 APRIL 29 2018

STUART CHISM 82A 1736988

S CHISUM 6175 †  
STUART MISS ROSE 22U

66 LILAC 11C 1867070

66 ALLIANCE 17Z  
DEER RIVER LILAC 9R

AOD	BW	205D	365D	EPDs	BW	WW	YW	MILK
5	74	584	1034		+1.3	+53	+83	+7



Lot 39



## REFERENCE SIRE

### F-R ATHABASCA 5051

DMG 5051C 1894053 APRIL 18 2015

OLE BLAZIN TRAVELER 643Z 1693521

DDA EMBLAZON E31  
OLE BLACKBIRD 0362W

F-R 9298 LASS 2221Z 1721264

WJ MECHANIC 9298W  
F-R 220 LASS 9209

BW: 78 205D: 624

EPDs	BW	WW	YW	MILK	TM	CE	MCE
	-2.0	+16	+28	+20	+28	+11.0	+10.0

A walking bull purchased from F-R Ranch. A bull we selected for the calving ease to use on heifers. A "sleep all night" heifer bull. Bull calves averaged 71lbs and the heifer calves averaged 67lbs. Murray Fraser said the dam to this bull is possibly one of his favorite cows at the place. I saw her the spring of 2018 and I'll tell you, if all cows looked like this one we would be done our quest for making the perfect Angus cow! Keep all the heifer calves!

**4 sons sell**

LOT  
40

### 66 ATHABASCA 677F

MALE CKM 677F 2057739 JUNE 02 2018

F-R ATHABASCA 5051 1894053

OLE BLAZIN TRAVELER 643Z  
F-R 9298 LASS 2221Z

66 ERICA 195D 1930131

66 ALLIANCE 17Z  
BAD LANDS ERICA 303N

AOD	BW	205D	365D	EPDs	BW	WW	YW	MILK
4	<b>66</b>	666	1078		-1.1	+39	+58	+21



Lot 41

LOT  
41

### 66 ATHABASCA 581F

MALE CKM 581F 2057701 MAY 14 2018

F-R ATHABASCA 5051 1894053

OLE BLAZIN TRAVELER 643Z  
F-R 9298 LASS 2221Z

66 BLACKBIRD 159D 1930093

COLE CREEK CEDAR RIDGE 1V †  
66 BLACKBIRD 313B

AOD	BW	205D	365D	EPDs	BW	WW	YW	MILK
4	<b>73</b>	606	1098		-1.3	+29	+56	+23

195D  
DAM OF  
LOT 40



160D  
DAM OF  
LOT 42



LOT  
42

### 66 ATHABASCA 555F

MALE CKM 555F 2057687 MAY 12 2018

F-R ATHABASCA 5051 1894053

OLE BLAZIN TRAVELER 643Z  
F-R 9298 LASS 2221Z

66 LADY FANNY 160D 1930094

66 THUNDER 308A  
66 LADY FANNY 562B

AOD	BW	205D	365D	EPDs	BW	WW	YW	MILK
4	<b>70</b>	602	1058		-1.3	+30	+55	+23



Lot 43

LOT  
43

### 66 ATHABASCA 681F

MALE CKM 681F 2057741 JUNE 07 2018

F-R ATHABASCA 5051 1894053

OLE BLAZIN TRAVELER 643Z  
F-R 9298 LASS 2221Z

66 ANNE 384D 1930311

V D A R CEDAR WIND 8111  
66 ANNE 305B

AOD	BW	205D	365D	EPDs	BW	WW	YW	MILK
4	<b>80</b>	631	1051		+0.5	+32	+55	+23

CALVING EASE BULLS  
BW IN **BOLD**



Lot 44



Lot 45

LOT  
44

**66 CHISM 208F**

MALE CKM 208F 2057492 APRIL 24 2018

66 CHISM 1D 1929946

STUART CHISM 82A  
66 DUCHESS 249A

BAD LANDS BLACKCAP 1054Y 1615295

BAD LANDS FORTE 16U  
BAD LANDS BLACKCAP 8108U

AOD	BW	205D	365D	EPDs	BW	WW	YW	MILK
9	79	720	1190		+0.1	+60	+99	+17

LOT  
45

**66 CHISM 236F**

MALE CKM 236F 2057508 APRIL 25 2018

66 CHISM 1D 1929946

STUART CHISM 82A  
66 DUCHESS 249A

DEER RIVER BLACKBIRD 81P 1227964

G D A R TRAVELER 044 †  
DEER RIVER BLACKBIRD 86C

AOD	BW	205D	365D	EPDs	BW	WW	YW	MILK
16	96	663	1175		+3.3	+55	+89	+15

**REFERENCE SIRE**



12 sons sell

**66 CHISM 1D**

CKM 1D 1929946 APRIL 03 2016

STUART CHISM 82A 1736988

S CHISM 6175 †  
STUART MISS ROSE 22U

66 DUCHESS 249A 1738898

BAD LANDS DAQUANTAE 26L  
BAD LANDS DUCHESS 9025W

BW: 74 205D: 702 365D: 1185

EPDs	BW	WW	YW	MILK	TM	CE	MCE
	+0.5	+78	+121	+10	+49	+8.0	+13.0

A walking bull raised at 66 Ranch. What a fortunate thing happening to us with this bull! He checks all the boxes, very moderate birth, great performance, and awesome looking female progeny, great scrotal, feet are superb, natural ease of flesh. We are very, very high on these 1D bred progeny. The rancher's kind of cattle out of this bull!

YEARLING SONS SELL AS LOTS 15-23

81P  
DAM OF  
LOT 45



4Z  
DAM OF  
LOT 46  
&  
LOT 96

LOT  
46

**66 CHISM 600F**

MALE CKM 600F 2064529 MAY 18 2018

66 CHISM 1D 1929946

STUART CHISM 82A  
66 DUCHESS 249A

SOUTH FORK ROSETTE 4Z 1677087

BAD LANDS FORTE 5S  
BAD LANDS ROSETTE 4032P

AOD	BW	205D	365D	EPDs	BW	WW	YW	MILK
8	102	668	1075		+4.4	+52	+82	+14

SIGHT UNSEEN PURCHASES - YOUR SATISFACTION IS GUARANTEED



## REFERENCE SIRE



1 son sells

### COLE CREEK CEDAR RIDGE 181

IMP 181Y 1715228 FEBRUARY 08 2011

COLE CREEK CEDAR RIDGE 1V † 1659099

COLE CREEK BLACK CEDAR 46P †  
COLE CREEK CLOVANADA 49S

COLE CREEK JUANADACAP 42P 14496790

HBR ENCORE 0544  
COLE CREEK JUANADA CAP 882

EPDs	BW	WW	YW	MILK	TM	CE	MCE
	+0.7	+29	+59	+32	+47	+8.0	+8.0

A walking bull we acquired originating from Cole Creek Angus near Billings Montana. Once again the female side of 181Y is extremely exciting. Could not find a bad foot or udder in their cow herd. Cole Creek Angus bloodlines are extremely attractive if you want your cows to be in your herd for a long time. 181Y calves all demonstrate the extreme ease of flesh their father had. The 181Y daughters in our herd all have excellent udders, deep, easy keepers. A favorite at the Ranch.



Lot 47

LOT  
47

### 66 CEDAR RIDGE 361F

MALE CKM 361F 2057574 APRIL 30 2018

COLE CREEK CEDAR RIDGE 181 1715228

COLE CREEK CEDAR RIDGE 1V †  
COLE CREEK JUANADACAP 42P

BAD LANDS BARBARA ROSE 53X 1555660

S A V FINAL ANSWER 0035 †  
RONAN BARBARA ROSE 25M

AOD	BW	205D	365D	EPDs	BW	WW	YW	MILK
10	92	614	1061		+1.9	+36	+68	+24

NO BULLS HAVE BEEN SOLD  
PRIOR TO THE SALE



*Good Luck!*

## YOU COULD WIN A 66 RANCH HEIFER

The Lot Number of each bull sold will go into a draw after the sale.

The drawn Lot # wins!

- OPTION A -

Pick one out of a pen of 10 hand selected 66 Ranch open commercial heifers to take home and put in your herd

or - OPTION B -

A \$1,000 cheque made out to you!



## REFERENCE SIRE

### 66 ALLIANCE 17Z

CKM 17Z 1677098 MARCH 26 2012

BAD LANDS ALLIANCE 14W 1502297

KMK ALLIANCE 6595 187 †  
BAD LANDS COUNTESS 214M †

BAD LANDS GLENELLA 5041R 1270140

LEACHMAN RIGHT TIME †  
BAD LANDS GLENELLA 247M

BW: 91 205D: 741 365D: 1215

EPDs	BW	WW	YW	MILK	TM	CE	MCE
	+4.6	+82	+130	+19	+60	-1.0	+13.0

Plain and simple, 17Z has it all. Performance, ease of flesh, leg structure, super foot, free moving, maternal. We feel we have lucked out and finally raised one that can compete with any A.I sire. His heifer calves are extremely feminine and by far the top end of the pen. Very moderate birth weights out of 352 calves, 86 lbs. avg. on the bull calves and 77 lbs. avg. on the heifer calves. We find it much easier to have confidence in A.I.'ing to a bull that you know exactly what his sire is and as well his dam. Because they both came from our program.



13 sons sell

YEARLING SONS SELL AS LOTS 70-80



Lot 48

LOT  
48

### 66 ALLIANCE 565F

MALE CKM 565F 2057692 MAY 12 2018

66 ALLIANCE 17Z 1677098

BAD LANDS ALLIANCE 14W  
BAD LANDS GLENELLA 5041R

BAD LANDS LADY 4090P 1220141

GLENRIO BANDOLIER 8X  
BAD LANDS LADY 920J

AOD	BW	205D	365D	EPDs	BW	WW	YW	MILK
16	97	680	1072		+5.1	+55	+84	+18



10W  
DAM OF  
LOT 49



Lot 49

LOT  
49

### 66 ALLIANCE 397F

MALE CKM 397F 2057598 MAY 02 2018

66 ALLIANCE 17Z 1677098

BAD LANDS ALLIANCE 14W  
BAD LANDS GLENELLA 5041R

DEER RIVER BLACKBIRD 10W 1521712

DEER RIVER 145P RIGHTTIME 325T  
DEER RIVER BLACKBIRD 138T

AOD	BW	205D	365D	EPDs	BW	WW	YW	MILK
11	92	653	1055		+3.7	+52	+81	+18



4-H  
PROJECT  
(sadly  
on hold)

VIEW THE BULLS AT 66 RANCH  
PRIOR TO THE SALE & BID ONLINE  
- Register ahead @ [DVAuction.com](http://DVAuction.com) -



## REFERENCE SIRE



2 sons sell

### VIEWLAWN PROSPER 829

IMP 829W † 1766544 APRIL 07 2009

VIEWLAWN MAINLINE 17 15883095

WOODHILL MAINLINE †  
VIEWLAWN 89 GAP 2122

VIEWLAWN 114 NF 1077 15922272

VIEWLAWN NEW FRONTIER 114  
VIEWLAWN 822 TT 1184 †

EPDs	BW	WW	YW	MILK	TM	CE	MCE
	-2.8	+51	+101	+21	+47	+13.0	+12.0

An A.I. sire we chose to use on heifers. Another super heifer bull, bull calves averaged 69 lbs. and heifer calves average 65 lbs. Prosper also has really good curve bending numbers with a BW EPD of -2.8 to a YW EPD of +101.

YEARLING SON SELLS AS LOT 36



Lot 50

LOT  
50

### 66 PROSPER 8031F

MALE CKM 8031F 2057514 APRIL 25 2018

VIEWLAWN PROSPER 829 † 1766544

VIEWLAWN MAINLINE 17  
VIEWLAWN 114 NF 1077

66 ERICA 6002D 1935964

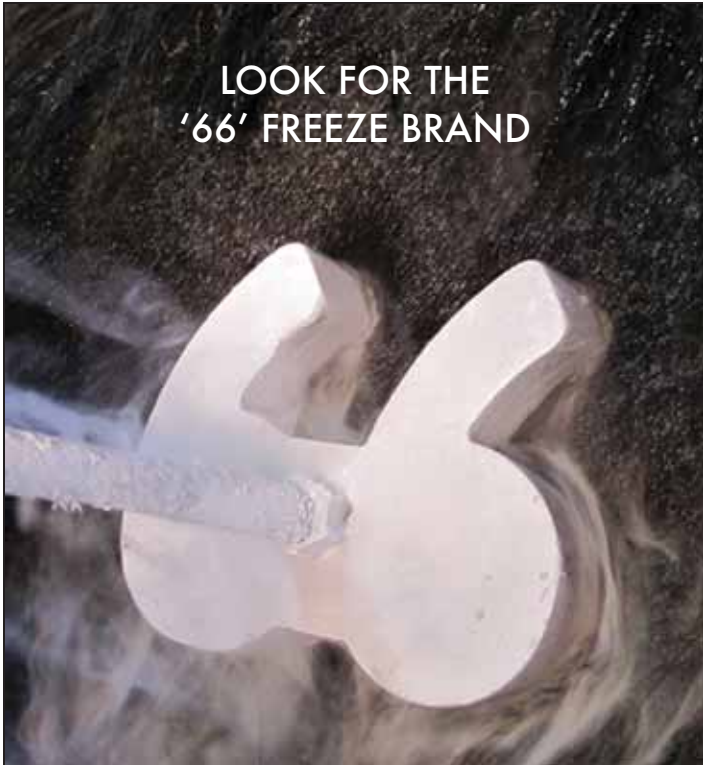
SOUTH FORK DESIRE 214Y  
66 ERICA 3053A

AOD	BW	205D	365D	EPDs	BW	WW	YW	MILK
4	70	652	1109		-2.6	+41	+74	+18

## VIDEO OF ALL THE SALE BULLS

Available on our website [www.66RanchLtd.com](http://www.66RanchLtd.com) & at [www.DVAuction.com](http://www.DVAuction.com)

LOOK FOR THE  
'66' FREEZE BRAND



**DVAuction**  
[www.dvauction.com](http://www.dvauction.com)

Watch & Bid online for FREE!

**Can't make the sale?**  
*Let DVAuction bring the sale to you!*  
**Busy during the sale?**  
*Let DVAuction represent your bid!*

**Visit [www.dvauction.com](http://www.dvauction.com) and Register!**  
It's as easy as 1, 2, 3...

1. Create an account at [www.dvauction.com](http://www.dvauction.com) under the "create new account" tab
2. Apply for bidding by clicking "apply for bidding" in the upper left corner of your screen, at least 24 hours prior to the auction
3. Tune into the sale and make your purchases!

For General Questions Please Contact Our Office:  
(402) 316-5460 or [support@dvauction.com](mailto:support@dvauction.com)

\*High Speed Internet Access Required



**Lot 51**

**LOT 51**

**66 ALLIANCE 8085F**

MALE CKM 8085F 2057718 MAY 19 2018

66 ALLIANCE 222B 1805880

66 ALLIANCE 17Z  
BAD LANDS PRINCESS 8041U

66 ROSEBUD 5024C 1867232

CONNELLY RIGHT ANSWER 746 †  
66 ROSEBUD 3023A

AOD	BW	205D	365D	EPDs	BW	WW	YW	MILK
5	87	689	1103		+1.0	+49	+76	+21



**Lot 52**

**LOT 52**

**66 ALLIANCE 8081F**

MALE CKM 8081F 2057705 MAY 16 2018

66 ALLIANCE 222B 1805880

66 ALLIANCE 17Z  
BAD LANDS PRINCESS 8041U

SOUTH FORK BLACKBIRD 227X 1592387

DEER RIVER 165R NITRO 315T  
DEER RIVER BLACKBIRD 668U

AOD	BW	205D	365D	EPDs	BW	WW	YW	MILK
10	92	682	1162		+3.4	+46	+72	+20



**Lot 54**

**LOT 53**

**66 ALLIANCE 604F**

MALE CKM 604F 2057713 MAY 18 2018

66 ALLIANCE 222B 1805880

66 ALLIANCE 17Z  
BAD LANDS PRINCESS 8041U

66 LADY FANNY 116A 1738797

CONNELLY IMPRINT 8317 †  
BAD LANDS LADY FANNY 9066W

AOD	BW	205D	365D	EPDs	BW	WW	YW	MILK
7	90	705	1105		+2.0	+54	+81	+20



**116A**  
DAM OF  
LOT 53



**128Z**  
DAM OF  
LOT 54

**REFERENCE SIRE**

**66 ALLIANCE 222B**

CKM 222B 1805880 APRIL 18 2014

66 ALLIANCE 17Z 1677098

BAD LANDS ALLIANCE 14W  
BAD LANDS GLENELLA 5041R

BAD LANDS PRINCESS 8041U 1429114

BAD LANDS QUANTUM 030K  
BAD LANDS PRINCESS 63K

BW: 93 205D: 745 365D: 1313

EPDs	BW	WW	YW	MILK	TM	CE	MCE
	+2.7	+53	+83	+20	+47	+1.0	+12.0

A walking bull we raised sired by 17Z. 222B has incredible length, depth, width and a super foot. His dam is a great cow going back to Quantum 3330 and Alliance on the sire side is going to give you a powerful set of females.

**4 sons sell**

**LOT 54**

**66 ALLIANCE 647F**

MALE CKM 647F 2057726 MAY 25 2018

66 ALLIANCE 222B 1805880

66 ALLIANCE 17Z  
BAD LANDS PRINCESS 8041U

SOUTH FORK PRIDE 128Z 1677206

NLC FEATURE ATTRACTION 3W  
BAD LANDS PRIDE 5057R

AOD	BW	205D	365D	EPDs	BW	WW	YW	MILK
8	86	577	1053		+2.5	+40	+63	+22





Lot 55

LOT 55

**66 BLACK 580F**

MALE CKM 580F 2057700 MAY 14 2018

COLE CREEK 1100 BLACK 1144 1844685

COLE CREEK BLACK CEDAR 1100  
COLE CREEK JUANADA SHE 48T

66 LASSIE 147C 1867209

BOYD RESUME 9008 †  
BAD LANDS LASSIE 1016Y

AOD	BW	205D	365D	EPDs	BW	WW	YW	MILK
5	90	619	1064		+3.7	+34	+61	+28



Lot 56

LOT 56

**66 CEDAR WIND 400F**

MALE CKM 400F 2057601 MAY 02 2018

V D A R CEDAR WIND 8111 1751551

COLE CREEK CEDAR RIDGE 1V †  
V D A R CHLOE 9727

BAD LANDS ERICA 45X 1555650

LOOKOUT CANUCK 65U  
BAD LANDS ERICA 22K

AOD	BW	205D	365D	EPDs	BW	WW	YW	MILK
10	98	633	1033		+3.7	+43	+66	+21

**REFERENCE SIRE**

**COLE CREEK 1100 BLACK 1144**

IMP 1144B 1844685 MARCH 07 2014

COLE CREEK BLACK CEDAR 1100 1998932

COLE CREEK BLACK CEDAR 46P †  
COLE CREEK JUANADA BIRD 38N

COLE CREEK JUANADA SHE 48T 15483010

COLE CREEK GOLDMERE 31N  
COLE CREEK JUANADA RITA 044

EPDs	BW	WW	YW	MILK	TM	CE	MCE
	+6.0	+34	+59	+28	+45	-7.0	-2.0

A walking bull at the ranch purchased from Cole Creek Angus. We have talked before about the incredible females at Cole Creek, but maybe hadn't mentioned their cows are expected to work for them in very tough semi-mountainous/hard brown grass country. Cole Creek cattle have ease of flesh bred into them and 1144B definitely is easy fleshing. And once again out of a near perfect dam.

**1 son sells**

† Indicates at least 1 genetic condition test with a free result

**REFERENCE SIRE**



12 sons sell

**V D A R CEDAR WIND 8111**

IMP 8111Y 1751551 JANUARY 06 2011

COLE CREEK CEDAR RIDGE 1V † 1659099

COLE CREEK BLACK CEDAR 46P †  
COLE CREEK CLOVANADA 49S

V D A R CHLOE 9727 16434284

V D A R REALLY WINDY 4097 †  
V D A R CHLOE 6320

EPDs	BW	WW	YW	MILK	TM	CE	MCE
	-1.4	+48	+84	+27	+51	+11.0	+12.0

YEARLING SONS SELL AS LOTS 118-127



Lot 57

LOT 57

**66 CEDAR WIND 314F**

MALE CKM 314F 2057548 APRIL 28 2018

V D A R CEDAR WIND 8111 1751551

COLE CREEK CEDAR RIDGE 1V †  
V D A R CHLOE 9727

66 NANCY 578D 1937186

BAD LANDS DAQUANTAE 26L  
REMITALL NANCY 801S

AOD	BW	205D	365D	EPDs	BW	WW	YW	MILK
4	82	619	1010		+2.8	+41	+69	+24

## REFERENCE SIRE



7 sons sell

### HOOVER DAM

IMP 18U †1552414 JANUARY 25 2008

SYDGEN C C & 7 †1552417

ERICA OF ELLSTON C124 14851883

S A F CONNECTION †  
SYDGEN FOREVER LADY 4087 †

TC GRIDIRON 258 †  
ERICA OF ELLSTON V65

EPDs	BW	WW	YW	MILK	TM	CE	MCE
	+1.9	+56	+93	+22	+50	+6.0	+5.0

YEARLING SONS SELL AS LOTS 9-14



Lot 58

LOT 58

### 66 HOOVER DAM 194F

MALE CKM 194F 2057485 APRIL 24 2018

HOOVER DAM †1552414

66 ZARA 100D 1930029

SYDGEN C C & 7 †  
ERICA OF ELLSTON C124

66 ALLIANCE 17Z  
SOUTH FORK ZARA 157Y

AOD	BW	205D	365D	EPDs	BW	WW	YW	MILK
4	68	478	959		+0.3	+39	+77	+18

## REFERENCE SIRE

### COLE CREEK RIDGE LINE 216

IMP 0216D 1963221 FEBRUARY 17 2016

COLE CREEK RIDGE LINE 1243 17622265

FCOLE CREEK JUANADA G 743 17622336

BW: 77 205D: 535

COLE CREEK RIDGE 1340  
COLE CREEK JUANADA MIST 12T

COLE CREEK BLACK CEDAR 1100  
COLE CREEK JUANADA G 15W

EPDs	BW	WW	YW	MILK	TM	CE	MCE
	+0.6	+45	+64	+22	+45	+8.0	+6.0

A walking bull we purchased from Cole Creek Angus. 216D is fat 365 days a year. He walked on 50 cows last season and 60 this season, and maintained his flesh through breeding season. Very attractive cattle sired by 216D, deep, easy keeping, really pretty headed.

9 sons sell

YEARLING SONS SELL AS LOTS 98-104



Lot 59

LOT 59

### 66 RIDGE LINE 551F

MALE CKM 551F 2057685 MAY 11 2018

COLE CREEK RIDGE LINE 216 1963221

66 MINA 48A 1738743

COLE CREEK RIDGE LINE 1243  
FCOLE CREEK JUANADA G 743

LOOKOUT CANUCK 65U  
SOUTH FORK MINA 247X

AOD	BW	205D	365D	EPDs	BW	WW	YW	MILK
7	88	642	1054		+2.0	+43	+60	+19

LOT 60

### 66 RIDGE LINE 709F

MALE CKM 709F 2057756 JUNE 15 2018

COLE CREEK RIDGE LINE 216 1963221

BAD LANDS COUNTESS 1026Y 1615253

COLE CREEK RIDGE LINE 1243  
FCOLE CREEK JUANADA G 743

BAD LANDS FINAL ANSWER 15W  
BAD LANDS COUNTESS 6049S

AOD	BW	205D	365D	EPDs	BW	WW	YW	MILK
9	88	559	964		+2.4	+40	+60	+18



Lot 60





Lot 61

LOT  
61

**66 7 BLACK 570F**

MALE CKM 570F 2070121 MAY 13 2018

COLE CREEK 7 BLACK 375 1914583

COLE CREEK 7 BLACK 1023  
COLE CREEK F02 JUANADA 1411

66 BARBARA 56B 1805738

BAD LANDS ATTRACTION 109Y  
BAD LANDS BARBARA 1087Y

AOD	BW	205D	365D	EPDs	BW	WW	YW	MILK
6	82	605	1095		+2.4	+34	+66	+21



Lot 62

LOT  
62

**66 7 BLACK 614F**

MALE CKM 614F 2064531 MAY 19 2018

COLE CREEK 7 BLACK 375 1914583

COLE CREEK 7 BLACK 1023  
COLE CREEK F02 JUANADA 1411

HD KEEPSAKE 3874A 1844501

BAD LANDS ALLIANCE 14W  
REMITALL KEEPSAKE 874S

AOD	BW	205D	365D	EPDs	BW	WW	YW	MILK
7	80	562	1045		+2.0	+35	+65	+19

**REFERENCE SIRE**

**COLE CREEK 7 BLACK 375**

IMP 375C 1914583 FEBRUARY 12 2015

COLE CREEK 7 BLACK 1023 17622337

COLE CREEK SEVEN BLACK 311  
COLE CREEK JUANADAMERE 98W

COLE CREEK F02 JUANADA 1411 17040028

COLE CREEK BLACK CEDAR 46P †  
COLE CREEK F0203 JUANADA 37V

BW: 82

EPDs	BW	WW	YW	MILK	TM	CE	MCE
	+2.9	+37	+66	+25	+44	+2.0	+0.0

A walking bull purchased at Cole Creek Angus. This sire's dam is one of Cole Creek Angus's favorite cows. Be sure to keep all the females sired by this bull.

**2 sons sell**

**REFERENCE SIRE**



3 sons sell

**EF COMMANDO 1366**

IMP 1366Y †1887295 AUGUST 25 2011

EF COMPLEMENT 8088 †16198796

BASIN FRANCHISE P142 †  
EF EVERELDA ENTENSE 6117

RIVERBEND YOUNG LUCY W1470 † 16543240

B/R AMBUSH 28 †  
RIVERBEND YOUNG LUCY T1080

EPDs	BW	WW	YW	MILK	TM	CE	MCE
	-0.8	+58	+99	+28	+57	+12.0	+9.0

An A.I. sire we used. Genex Semen Sales says a no-miss calving ease sire. With a 60 lb. BW to 673 lb. WW and 991 lb. YW looks to be true.

YEARLING SONS SELL AS LOTS 129-130



Lot 63

LOT  
63

**66 COMMANDO 8070F**

MALE CKM 8070F 2057639 MAY 05 2018

EF COMMANDO 1366 † 1887295

EF COMPLEMENT 8088 †  
RIVERBEND YOUNG LUCY W1470 †

66 HYALITE 6056D 1930190

EXAR DECLARATION 1686B †  
BAD LANDS HYALITE HEDY 159X

AOD	BW	205D	365D	EPDs	BW	WW	YW	MILK
4	76	665	1055		-0.5	+43	+69	+26

## REFERENCE SIRE

### F-R CEDAR RIDGE 4210

DMC 4210B 1889691 MAY 19 2014

COLE CREEK CEDAR RIDGE 1V † 1659099

F-R TOTAL LASS 8094 1655121

BW: 84 205D: 587

COLE CREEK BLACK CEDAR 46P †  
COLE CREEK CLOVANADA 49S

K C F BENNETT TOTAL †  
F-R 60B LASS 1112

EPDs	BW	WW	YW	MILK	TM	CE	MCE
	+0.2	+27	+48	+23	+37	+9.0	+10.0

A walking bull purchased from Fraser's. A calving ease specialist, with extreme docility. Excellent maternal traits from the dam side of this bull.

**1 son sells**



Lot 64

LOT  
64

### 66 CEDAR RIDGE 568F

MALE CKM 568F 2057694 MAY 12 2018

F-R CEDAR RIDGE 4210 1889691

COLE CREEK CEDAR RIDGE 1V †  
F-R TOTAL LASS 8094

66 DUCHESS 467D 1948225

66 THUNDER 90B  
66 DUCHESS 350A

AOD	BW	205D	365D	EPDs	BW	WW	YW	MILK
4	83	565	990		+2.2	+26	+45	+20



## 66 RANCH LTD.

Reserves the right to draw 250 straws of semen at our expense and at your convenience on any bull selling in the sale. For in-herd use only.

## REFERENCE SIRE



**1 son sells**

### S A V BISMARCK 5682

IMP 5682R † 1369591 FEBRUARY 01 2005

G A R GRID MAKER † 1129870

G D A R TRAVELER 044 †  
G A R PRECISION 2536 †

S A V ABIGALE 0451 13593085

SCHOENES FIX IT 826 †  
S A V ABIGALE 6062 †

EPDs	BW	WW	YW	MILK	TM	CE	MCE
	+0.0	+53	+88	+21	+48	+12.0	+13.0



Lot 65

LOT  
65

### 66 BISMARCK 262F

MALE CKM 262F 2057521 APRIL 27 2018

S A V BISMARCK 5682 † 1369591

G A R GRID MAKER †  
S A V ABIGALE 0451

66 DUCHESS 350A 1738977

BAD LANDS DAQUANTAE 26L  
BAD LANDS DUCHESS 36K

AOD	BW	205D	365D	EPDs	BW	WW	YW	MILK
7	79	587	949		+0.3	+30	+44	+19



## REFERENCE SIRE



3 sons sell

### COLE CREEK BLACK CEDAR 46P

IMP 46N 1605479 FEBRUARY 16 2003

C H QUANTUM 6247 12687606

C H QUANTUM 3330  
C H BLACKBIRD 0136

COLE CREEK CLOVA JUANADA 67 12872634

A A R WINDY RIDGE 523  
COLE CREEK CLOVA JUANADA 811

EPDs	BW	WW	YW	MILK	TM	CE	MCE
	+2.3	+46	+83	+20	+43	+2.0	+5.0

Maternal, Maternal, Maternal! 46P was raised by Cole Creek Angus in Billings, Montana. Possibly one of the best herds we have been in. Not a bad foot or udder to be found. We saw a large number of 46P sired cows that were 13 years old at the time, that being the reason we sourced 46P semen to use in our herd. Along with the super strong maternal side, 46P has sired some dandy bull calves. Real easy fleshing, deep sided cattle.

YEARLING SONS SELL AS LOTS 140-141

## - SIGHT UNSEEN PURCHASES -

YOUR SATISFACTION  
IS GUARANTEED

Contact 66 Ranch Ltd.  
or any of our Sales Staff

## REFERENCE SIRE

### F-R MECHANIC 4086

DMC 4086B 1830176 APRIL 19 2014

WJ MECHANIC 9298W 1529581

CROWFOOT MECHANIC 5789R  
CROWFOOT G V LASS 6686S

F-R 5024 LASS 1207 1655193

F-R 9102 LAD 5024  
F-R OD LASS 5040

BW: 94 205D: 636

EPDs	BW	WW	YW	MILK	TM	CE	MCE
	+9.5	+51	+103	+17	+43	-15.0	+1.0

A walking bull purchased from Fraser's. Deep and thick. Extra length with added performance. Being a Mechanic sired bull the females will be moderate, easy fleshing and perfect uddered.

1 son sells



Lot 66

LOT  
66

### 66 BLACK CEDAR 345F

MALE CKM 345F 2057568 TWIN APRIL 30 2018

COLE CREEK BLACK CEDAR 46P ♀ 1605479

C H QUANTUM 6247  
COLE CREEK CLOVA JUANADA 67

BAD LANDS DUCHESS 1041Y 1615278

NLC FEATURE ATTRACTION 3W  
BAD LANDS DUCHESS 7024T

AOD	BW	205D	365D	EPDs	BW	WW	YW	MILK
9	61	667	1136		+3.1	+45	+77	+22



PICTURE  
DAY



Lot 67

LOT  
67

### 66 MECHANIC 631F

MALE CKM 631F 2064583 MAY 22 2018

F-R MECHANIC 4086 1830176

WJ MECHANIC 9298W  
F-R 5024 LASS 1207

66 ROSEBUD 259A 1738906

SOUTH FORK GAME DAY 123X  
SOUTH FORK ROSEBUD 265Y

AOD	BW	205D	365D	EPDs	BW	WW	YW	MILK
7	88	615	1054		+3.9	+39	+77	+21

## REFERENCE SIRE



1 son sells

### COLE CREEK CEDAR 1095

IMP 1095C 1914587 FEBRUARY 24 2015

COLE CREEK CEDAR 791 17039944

C H QUANTUM 6247  
COLE CREEK CLOVA JUANADA 44N

COLE CREEK JUANADAMERE 77W 16453067

COLE CREEK JUANADA LAD 81T  
COLE CREEK JUANADAMERE 90P

BW: 77

EPDs	BW	WW	YW	MILK	TM	CE	MCE
	+0.1	+11	+26	+27	+33	+9.0	+6.0

A walking bull purchased from Cole Creek Angus. This bull carries the extra flesh year round. Extreme docility, moderate, great foot.



Lot 68

LOT  
68

### 66 CEDAR 616F

MALE CKM 616F 2057716 MAY 19 2018

COLE CREEK CEDAR 1095 1914587

COLE CREEK CEDAR 791  
COLE CREEK JUANADAMERE 77W

66 BARBARA 360D 1930286

66 ALLIANCE 17Z  
SOUTH FORK BARBARA 486Z

AOD	BW	205D	365D	EPDs	BW	WW	YW	MILK
4	77	597	961		+1.6	+30	+49	+24

WE WELCOME YOUR VISIT TO  
VIEW THE BULLS AT 66 RANCH  
PRIOR TO THE SALE  
- Welcome Anytime -

## REFERENCE SIRE

### 66 THUNDER 296B

CKM 296B 1805957 APRIL 22 2014

CONNEALY THUNDER † 1385922

BALDRIDGE KABOOM K243 KCF †  
PARKA OF CONANGA 241 CAC †

DEER RIVER BLACKBIRD 326U 1467553

DEER RIVER STOCKMAN 7R  
DEER RIVER BLACKBIRD 299R

BW: 88 205D: 642 365D: 1148

EPDs	BW	WW	YW	MILK	TM	CE	MCE
	+4.4	+40	+67	+19	+39	-3.0	+9.0

A walking bull we raised going back to Thunder on his sire side. Calving ease with great growth and the female side is very attractive. An incredibly long bull with great depth.

1 son sells

326U

DAM OF  
REF SIRE  
66  
THUNDER  
296B

&  
LOT 134



5097R  
DAM OF  
LOT 69  
&  
REF SIRE  
66  
ALLIANCE  
217C



Lot 69

LOT  
69

### 66 THUNDER 593F

MALE CKM 593F 2057708 MAY 17 2018

66 THUNDER 296B 1805957

CONNEALY THUNDER †  
DEER RIVER BLACKBIRD 326U

BAD LANDS PRIDE 5097R 1270096

BAD LANDS DAQUANTAE 26L  
BAD LANDS PRIDE 859H

AOD	BW	205D	365D	EPDs	BW	WW	YW	MILK
15	85	619	989		+2.9	+36	+55	+18





# YEARLINGS



Lot 70

LOT 70

## 66 ALLIANCE 74G

MALE CKM 74G 2116900 APRIL 18 2019

66 ALLIANCE 17Z 1677098

BAD LANDS ALLIANCE 14W  
BAD LANDS GLENELLA 5041R

DEER RIVER DUCHESS 383T 1382181

DEER RIVER BINGO 137L  
DEER RIVER DUCHESS 141N

AOD	BW	205D	EPDs	BW	WW	YW	MILK
13	94	876		+4.4	+72	+115	+24

LOT 71

## 66 ALLIANCE 56G

MALE CKM 56G 2112845 APRIL 17 2019

66 ALLIANCE 17Z 1677098

BAD LANDS ALLIANCE 14W  
BAD LANDS GLENELLA 5041R

BAD LANDS LASSIE 5140R 1281929

BAD LANDS WIDESPREAD 17J<sup>†</sup>  
BAD LANDS LASSIE 16K

AOD	BW	205D	EPDs	BW	WW	YW	MILK
15	90	788		+4.5	+68	+101	+23



383T  
DAM OF  
LOT 70



5140R  
DAM OF  
LOT 71



Lot 71

## REFERENCE SIRE

### 66 ALLIANCE 17Z

CKM 17Z 1677098 MARCH 26 2012

BAD LANDS ALLIANCE 14W 1502297

KMK ALLIANCE 6595 187<sup>†</sup>  
BAD LANDS COUNTLESS 214M<sup>†</sup>

BAD LANDS GLENELLA 5041R 1270140

LEACHMAN RIGHT TIME<sup>†</sup>  
BAD LANDS GLENELLA 247M

BW: 91 205D: 741 365D: 1215

EPDs	BW	WW	YW	MILK	TM	CE	MCE
	+4.6	+82	+130	+19	+60	-1.0	+13.0

Plain and simple, 17Z has it all. Performance, ease of flesh, leg structure, super foot, free moving, maternal. We feel we have lucked out and finally raised one that can compete with any A.I sire. His heifer calves are extremely feminine and by far the top end of the pen. Very moderate birth weights out of 352 calves, 86lbs avg. on the bull calves and 77lbs avg. on the heifer calves. We find it much easier to have confidence in A.I.'ing to a bull that you know exactly what his sire is and as well his dam. Because they both came from our program.



13 sons sell

TWO YEAR OLD SONS SELL AS LOTS 48-49



Lot 72

LOT 72

**66 ALLIANCE 187G**

MALE CKM 187G 2117000 APRIL 24 2019

66 ALLIANCE 17Z 1677098

BAD LANDS ALLIANCE 14W  
BAD LANDS GLENELLA 5041R

66 BLACKBIRD 48C 1867108

SHIPWHEEL CHINOOK †  
66 BLACKBIRD 268A

AOD	BW	205D	EPDs	BW	WW	YW	MILK
5	96	699		+3.7	+69	+113	+25



Lot 75

LOT 75

**66 ALLIANCE 335G**

MALE CKM 335G 2121576 APRIL 30 2019

66 ALLIANCE 17Z 1677098

BAD LANDS ALLIANCE 14W  
BAD LANDS GLENELLA 5041R

DEER RIVER ZARA 119R 1273641

MAR PRECISION PAVING THE WAY †  
DEER RIVER ZARA 56K

AOD	BW	205D	EPDs	BW	WW	YW	MILK
15	88	739		+3.3	+61	+97	+23



Lot 73

LOT 73

**66 ALLIANCE 250G**

MALE CKM 250G 2119614 APRIL 26 2019

66 ALLIANCE 17Z 1677098

BAD LANDS ALLIANCE 14W  
BAD LANDS GLENELLA 5041R

BAD LANDS HEDY 1021Y 1615249

BAD LANDS IMAGE MAKER 65W  
BAD LANDS HEDY 7041T

AOD	BW	205D	EPDs	BW	WW	YW	MILK
9	92	705		+2.7	+59	+94	+23

LOT 74

**66 ALLIANCE 267G**

MALE CKM 267G 2119626 APRIL 28 2019

66 ALLIANCE 17Z 1677098

BAD LANDS ALLIANCE 14W  
BAD LANDS GLENELLA 5041R

SOUTH FORK BLACKBIRD 55X 1585251

PINEBANK WAIGROUP 152/04 †  
DEER RIVER BLACKBIRD 516R

AOD	BW	205D	EPDs	BW	WW	YW	MILK
10	89	727		+3.3	+66	+104	+22



48C  
DAM OF  
LOT 72



1021Y  
DAM OF  
LOT 73



55X  
DAM OF  
LOT 74





**LOT  
76**

**66 ALLIANCE 193G**

MALE CKM 193G 2117002 APRIL 24 2019

66 ALLIANCE 17Z 1677098

BAD LANDS ALLIANCE 14W  
BAD LANDS GLENELLA 5041R

66 COUNTESS 583C 1867598

COLE CREEK CEDAR RIDGE 181  
SOUTH FORK COUNTESS 118Z

AOD	BW	205D	EPDs	BW	WW	YW	MILK
5	91	735		+4.1	+62	+101	+23



**151B**  
DAM OF  
LOT 77



**165X**  
DAM OF  
LOT 79

**LOT  
77**

**66 ALLIANCE 234G**

MALE CKM 234G 2121920 APRIL 26 2019

66 ALLIANCE 17Z 1677098

BAD LANDS ALLIANCE 14W  
BAD LANDS GLENELLA 5041R

66 COUNTESS 151B 1819732

V D A R REALLY WINDY 4097 †  
SOUTH FORK COUNTESS 142Z

AOD	BW	205D	EPDs	BW	WW	YW	MILK
6	79	683		+1.1	+69	+110	+17

**LOT  
79**

**66 ALLIANCE 255G**

MALE CKM 255G 2119619 APRIL 27 2019

66 ALLIANCE 17Z 1677098

BAD LANDS ALLIANCE 14W  
BAD LANDS GLENELLA 5041R

SOUTH FORK BLACKBIRD 165X 1585334

DEER RIVER KINCAID 204T  
DEER RIVER BLACKBIRD 168U

AOD	BW	205D	EPDs	BW	WW	YW	MILK
10	83	675		+3.4	+59	+98	+17



**LOT  
78**

**66 ALLIANCE 116G**

MALE CKM 116G 2112855 APRIL 20 2019

66 ALLIANCE 17Z 1677098

BAD LANDS ALLIANCE 14W  
BAD LANDS GLENELLA 5041R

BAD LANDS LADY 4090P 1220141

GLENRIO BANDOLIER 8X  
BAD LANDS LADY 920J

AOD	BW	205D	EPDs	BW	WW	YW	MILK
16	94	704		+5.1	+60	+95	+18



**LOT  
80**

**66 ALLIANCE 52G**

MALE CKM 52G 2112842 APRIL 16 2019

66 ALLIANCE 17Z 1677098

BAD LANDS ALLIANCE 14W  
BAD LANDS GLENELLA 5041R

66 ZARA 299A 1762208

V D A R REALLY WINDY 4097 †  
SOUTH FORK ZARA 157Y

AOD	BW	205D	EPDs	BW	WW	YW	MILK
7	94	585		+3.2	+61	+104	+11



Lot 81



Lot 82

LOT 81

**66 BOBCAT 323G**

MALE CKM 323G 2119650 APRIL 30 2019

WK BOBCAT † 1655479

CONNEALY RIGHT ANSWER 746 †  
WK MISS ANGUS 7127

SOUTH FORK BLACKBIRD 137Y 1640253

DEER RIVER CONVERGENCE 68R  
DEER RIVER BLACKBIRD 325S

AOD	BW	205D	EPDs	BW	WW	YW	MILK
9	<b>79</b>	741		+0.7	+56	+98	+24

LOT 82

**66 BOBCAT 271G**

MALE CKM 271G 2119627 APRIL 28 2019

WK BOBCAT † 1655479

CONNEALY RIGHT ANSWER 746 †  
WK MISS ANGUS 7127

66 LADY FANNY 294C 1867353

COLE CREEK CEDAR RIDGE 181  
SOUTH FORK LADY FANNY 138Z

AOD	BW	205D	EPDs	BW	WW	YW	MILK
5	94	699		+3.4	+53	+93	+24

CALVING EASE BULLS  
BW IN **BOLD**

**REFERENCE SIRE**



13 sons sell

**WK BOBCAT**

IMP 9208W 1655479 FEBRUARY 01 2009

CONNEALY RIGHT ANSWER 746 † 1547517

S A V FINAL ANSWER 0035 †  
HAPPY DELL OF CONANGA 262

WK MISS ANGUS 7127 15797993

SCHURRTOP MC 2500 †  
WK MISS ANGUS 1403 †

EPDs	BW	WW	YW	MILK	TM	CE	MCE
	-0.2	+51	+97	+27	+53	+15.0	+15.0

As proof in the progeny by Bobcat and likewise his EPD numbers from a -0.2 BW to an amazing +97 YW. He definitely is a true "Rancher Bull." A calving ease bull that works super on 1st calf heifers and has the performance to use his sons on your cows as well. We went back and sourced more semen on Bobcat after we saw how perfect the udders were on our 6 year old cows out of him. Expect to see more Bobcat progeny in the future.



137Y  
DAM OF  
LOT 81



294C  
DAM OF  
LOT 82

REGISTER EARLY  
TO WATCH LIVE  
& BID ONLINE

**DVAuction**  
www.dvauction.com



LOT  
83

### 66 BOBCAT 47G

MALE CKM 47G 2116721 APRIL 16 2019

WK BOBCAT † 1655479

CONNEALY RIGHT ANSWER 746 †  
WK MISS ANGUS 7127

66 DUCHESS 75B 1827622

V D A R CEDAR WIND 8111  
SOUTH FORK DUCHESS 74Z

AOD	BW	205D	EPDs	BW	WW	YW	MILK
6	70	626		-1.9	+41	+71	+27



Lot 83



75B

DAM OF  
LOT 83

LOT  
84

### 66 BOBCAT 130G

MALE CKM 130G 2116946 APRIL 21 2019

WK BOBCAT † 1655479

CONNEALY RIGHT ANSWER 746 †  
WK MISS ANGUS 7127

66 PRIDE 557E 1997649

F-R MECHANIC 3025  
66 PRIDE 379C

AOD	BW	205D	EPDs	BW	WW	YW	MILK
3	89	619		+4.0	+43	+87	+23



Lot 84

LOT  
85

### 66 BOBCAT 308G

MALE CKM 308G 2119640 APRIL 30 2019

WK BOBCAT † 1655479

CONNEALY RIGHT ANSWER 746 †  
WK MISS ANGUS 7127

66 BLACK LASS 291E 1997339

STEVENSON ROCKMOUNT RX933 †  
66 BLACK LASS 261C

AOD	BW	205D	EPDs	BW	WW	YW	MILK
3	62	694		-1.9	+51	+94	+26



Lot 85



138E

DAM OF  
LOT 86

LOT  
86

### 66 BOBCAT 67G

MALE CKM 67G 2116897 APRIL 17 2019

WK BOBCAT † 1655479

CONNEALY RIGHT ANSWER 746 †  
WK MISS ANGUS 7127

66 BLACKCAP 138E 1997194

V D A R CEDAR WIND 8111  
66 BLACKCAP 95C

AOD	BW	205D	EPDs	BW	WW	YW	MILK
3	68	684		-0.6	+55	+97	+27

## BULLS SOLD IN CATALOG ORDER

Updated weights & scrotal measurements available Sale Day



**LOT  
87**

**66 BOBCAT 22G**

MALE CKM 22G 2112833 APRIL 14 2019

WK BOBCAT † 1655479

CONNELY RIGHT ANSWER 746 †  
WK MISS ANGUS 7127

66 BLACKBIRD 107E 1997164

66 ALLIANCE 17Z  
DEER RIVER BLACKBIRD 14P

AOD	BW	205D	EPDs	BW	WW	YW	MILK
3	<b>72</b>	689		+1.3	+56	+93	+24

**LOT  
89**

**66 BOBCAT 160G**

MALE CKM 160G 2116956 APRIL 22 2019

WK BOBCAT † 1655479

CONNELY RIGHT ANSWER 746 †  
WK MISS ANGUS 7127

66 PRIDE 607E 2003371

F-R CEDAR RIDGE 4210  
66 PRIDE 197C

AOD	BW	205D	EPDs	BW	WW	YW	MILK
3	<b>71</b>	602		+0.7	+47	+84	+24



**264A**  
DAM OF  
LOT 88

**LOT  
88**

**66 BOBCAT 252G**

MALE CKM 252G 2119615 APRIL 26 2019

WK BOBCAT † 1655479

CONNELY RIGHT ANSWER 746 †  
WK MISS ANGUS 7127

66 IDELETTE 264A 1738911

DEER RIVER CONVERGENCE 68R  
DEER RIVER IDELETTE 352W

AOD	BW	205D	EPDs	BW	WW	YW	MILK
7	<b>80</b>	628		+0.5	+47	+84	+19







**LOT 90**

**66 BOBCAT 27G**

MALE CKM 27G 2116717 APRIL 14 2019

WK BOBCAT † 1655479

CONNELY RIGHT ANSWER 746 †  
WK MISS ANGUS 7127

66 LASSIE 99E 1997158

V D A R CEDAR WIND 8111  
66 LASSIE 589C

AOD	BW	205D	EPDs	BW	WW	YW	MILK
3	<b>78</b>	612		+0.8	+47	+87	+25



**LOT 92**

**66 BOBCAT 184G**

MALE CKM 184G 2116998 APRIL 24 2019

WK BOBCAT † 1655479

CONNELY RIGHT ANSWER 746 †  
WK MISS ANGUS 7127

66 DUCHESS 420E 1997540

66 ALLIANCE 17Z  
SOUTH FORK DUCHESS 70Y

AOD	BW	205D	EPDs	BW	WW	YW	MILK
3	<b>66</b>	588		+0.0	+43	+76	+23



**LOT 91**

**66 BOBCAT 223G**

MALE CKM 223G 2119606 APRIL 26 2019

WK BOBCAT † 1655479

CONNELY RIGHT ANSWER 746 †  
WK MISS ANGUS 7127

66 BARBARA 162E 1999790

FF BLACK GOLD JF C19 †  
BAD LANDS BARBARA 9079W

AOD	BW	205D	EPDs	BW	WW	YW	MILK
3	<b>62</b>	623		-2.4	+46	+81	+22



**LOT 93**

**66 BOBCAT 337G**

MALE CKM 337G 2121578 APRIL 30 2019

WK BOBCAT † 1655479

CONNELY RIGHT ANSWER 746 †  
WK MISS ANGUS 7127

66 DUCHESS 203E 2007999

COLE CREEK BLACK CEDAR 1100  
66 DUCHESS 422C

AOD	BW	205D	EPDs	BW	WW	YW	MILK
3	<b>71</b>	592		+0.5	+39	+76	+24





Lot 94

LOT 94

### 66 CONVERGENCE 3G

MALE CKM 3G 2116711 APRIL 08 2019

SOUTH FORK CONVERGENCE 217Y 1640413

DEER RIVER CONVERGENCE 68R  
DEER RIVER BLACKBIRD 161T

66 MONTANA 393C 1867447

SHIPWHEEL MONTANA 2600 ‡  
BAD LANDS LASSIE 1139Y

AOD	BW	205D	EPDs	BW	WW	YW	MILK
5	74	644		+2.2	+55	+83	+20

LOT 95

### 66 CONVERGENCE 247G

MALE CKM 247G 2119617 APRIL 27 2019

SOUTH FORK CONVERGENCE 217Y 1640413

DEER RIVER CONVERGENCE 68R  
DEER RIVER BLACKBIRD 161T

SOUTH FORK ROSETTE 207Z 1708595

BAD LANDS FORTE 16U  
BAD LANDS ROSETTE 8157U

AOD	BW	205D	EPDs	BW	WW	YW	MILK
8	84	744		+3.4	+58	+92	+19

## REFERENCE SIRE



4 sons sell

### SOUTH FORK CONVERGENCE 217Y

CKM 217Y 1640413 MAY 01 2011

DEER RIVER CONVERGENCE 68R 1273347

G A R EVAS CONVERGENCE 3403 ‡  
WILLABAR COUNTESS 248F

DEER RIVER BLACKBIRD 161T 1396618

H A IMAGE MAKER 0415 ‡  
DEER RIVER BLACKBIRD 95R

BW: 94 205D: 759 365D: 1138

EPDs	BW	WW	YW	MILK	TM	CE	MCE
	+5.3	+65	+98	+16	+49	-2.0	+8.0

Deep, thick, wide, square. As some locals would say a real "meat wagon." Going back on 217Y's sire side, is a proven herd sire of ours that produces excellent females.



207Z  
DAM OF  
LOT 95



4Z  
DAM OF  
LOT 96  
&  
LOT 46

LOT 96

### 66 CONVERGENCE 333G

MALE CKM 333G 2121574 APRIL 30 2019

SOUTH FORK CONVERGENCE 217Y 1640413

DEER RIVER CONVERGENCE 68R  
DEER RIVER BLACKBIRD 161T

SOUTH FORK ROSETTE 4Z 1677087

BAD LANDS FORTE 5S  
BAD LANDS ROSETTE 4032P

AOD	BW	205D	EPDs	BW	WW	YW	MILK
8	95	644		+5.5	+47	+74	+17



Lot 97

LOT 97

### 66 CONVERGENCE 153G

MALE CKM 153G 2136013 APRIL 22 2019

SOUTH FORK CONVERGENCE 217Y 1640413

DEER RIVER CONVERGENCE 68R  
DEER RIVER BLACKBIRD 161T

66 FANNY 84B 1805757

CONNELLY THUNDER ‡  
BAD LANDS FANNY 114X

AOD	BW	205D	EPDs	BW	WW	YW	MILK
6	96	639		+4.7	+53	+86	+19

‡ Indicates at least 1 genetic condition test with a free result





**7019T**  
DAM OF  
LOT 98



**Lot 98**

**LOT  
98**

**66 RIDGE LINE 278G**

MALE CKM 278G 2119630 APRIL 29 2019

COLE CREEK RIDGE LINE 216 1963221

COLE CREEK RIDGE LINE 1243  
FCOLE CREEK JUANADA G 743

BAD LANDS LASSIE 7019T 1387785

KMK ALLIANCE 6595 187 †  
BAD LANDS LASSIE 53K

AOD	BW	205D	EPDs	BW	WW	YW	MILK
13	85	750		+2.6	+53	+76	+25

**LOT  
99**

**66 RIDGE LINE 138G**

MALE CKM 138G 2116950 APRIL 21 2019

COLE CREEK RIDGE LINE 216 1963221

COLE CREEK RIDGE LINE 1243  
FCOLE CREEK JUANADA G 743

66 BARBARA 156B 1805820

CONNELLY CONSENSUS 7229 †  
DEER RIVER BARBARA 51U

AOD	BW	205D	EPDs	BW	WW	YW	MILK
6	80	637		+1.0	+43	+66	+21



**Lot 99**

**LOT  
100**

**66 RIDGE LINE 145G**

MALE CKM 145G 2116953 APRIL 21 2019

COLE CREEK RIDGE LINE 216 1963221

COLE CREEK RIDGE LINE 1243  
FCOLE CREEK JUANADA G 743

BAD LANDS BLACK LASS 5037R 1270136

BAD LANDS AMBUSH 88M  
BAD LANDS BLACKLASS 662F

AOD	BW	205D	EPDs	BW	WW	YW	MILK
15	86	699		+1.1	+40	+57	+21



**Lot 100**

**REFERENCE SIRE**

**COLE CREEK RIDGE LINE 216**

IMP 0216D 1963221 FEBRUARY 17 2016

COLE CREEK RIDGE LINE 1243 17622265

COLE CREEK RIDGE 1340  
COLE CREEK JUANADA MIST 12T

FCOLE CREEK JUANADA G 743 17622336

COLE CREEK BLACK CEDAR 1100  
COLE CREEK JUANADA G 15W

BW: 77 205D: 535

EPDs	BW	WW	YW	MILK	TM	CE	MCE
	+0.6	+45	+64	+22	+45	+8.0	+6.0

A walking bull we purchased from Cole Creek Angus. 216D is fat 365 days a year. He walked on 50 cows last season and 60 this season, and maintained his flesh through breeding season. Very attractive cattle sired by 216D, deep, easy keeping, really pretty headed.

**7 sons sell**

**5037R**

DAM OF  
LOT 100





Lot 101



Lot 103

**LOT 101**

**66 RIDGE LINE 103G**

MALE CKM 103G 2112852 APRIL 19 2019

COLE CREEK RIDGE LINE 216 1963221

COLE CREEK RIDGE LINE 1243  
FCOLE CREEK JUANADA G 743

66 COUNTESS 311D 1937183

DEER RIVER CONVERGENCE 68R  
BAD LANDS COUNTESS 1026Y

AOD	BW	205D	EPDs	BW	WW	YW	MILK
4	90	661		+2.5	+51	+78	+18

**LOT 103**

**66 RIDGE LINE 38G**

MALE CKM 38G 2116720 APRIL 15 2019

COLE CREEK RIDGE LINE 216 1963221

COLE CREEK RIDGE LINE 1243  
FCOLE CREEK JUANADA G 743

66 LILAC 11C 1867070

66 ALLIANCE 17Z  
DEER RIVER LILAC 9R

AOD	BW	205D	EPDs	BW	WW	YW	MILK
5	<b>59</b>	569		-1.1	+43	+61	+21



Lot 102



Lot 104

**LOT 102**

**66 RIDGE LINE 275G**

MALE CKM 275G 2119629 APRIL 29 2019

COLE CREEK RIDGE LINE 216 1963221

COLE CREEK RIDGE LINE 1243  
FCOLE CREEK JUANADA G 743

BAD LANDS LASSIE 5017R 1261697

BAD LANDS AMBUSH 1M  
BAD LANDS LASSIE 305N

AOD	BW	205D	EPDs	BW	WW	YW	MILK
15	94	691		+2.9	+42	+57	+24

**LOT 104**

**66 RIDGE LINE 37G**

MALE CKM 37G 2112839 APRIL 15 2019

COLE CREEK RIDGE LINE 216 1963221

COLE CREEK RIDGE LINE 1243  
FCOLE CREEK JUANADA G 743

66 ROSEBUD 167D 1930102

66 ALLIANCE 17Z  
SOUTH FORK ROSEBUD 199X

AOD	BW	205D	EPDs	BW	WW	YW	MILK
4	<b>68</b>	595		+0.5	+47	+71	+19





**LOT  
105**

**66 CHINOOK 8G**

MALE CKM 8G 2116714 APRIL 10 2019

SHIPWHEEL CHINOOK † 1582467

H A IMAGE MAKER 0415 †  
APEX ERISKAY 5506

66 MIDDLEBROOK 33C 1867091

66 ALLIANCE 17Z  
SOUTH FORK MIDDLEBROOK 111Z

AOD	BW	205D	EPDs	BW	WW	YW	MILK
5	72	727		-0.5	+67	+105	+21



**Lot 105**



**539A**

DAM OF  
LOT 106

**LOT  
106**

**66 CHINOOK 279G**

MALE CKM 279G 2119631 APRIL 29 2019

SHIPWHEEL CHINOOK † 1582467

H A IMAGE MAKER 0415 †  
APEX ERISKAY 5506

66 ROSEBUD 539A 1755667

SOUTH FORK CONVERGENCE 255Y  
SOUTH FORK ROSEBUD 13Y

AOD	BW	205D	EPDs	BW	WW	YW	MILK
7	90	751		+3.0	+61	+96	+26



**Lot 106**

**REFERENCE SIRE**



**7 sons sell**

**SHIPWHEEL CHINOOK**

IMP 7700T † 1582467 FEBRUARY 06 2007

H A IMAGE MAKER 0415 † 1195032

HERO 6267 OF R R 2418 †  
H A RITO BLACKCAP 9038

APEX ERISKAY 5506 15252929

MYTTY IN FOCUS †  
APEXETTE ERISKAY 3032

EPDs	BW	WW	YW	MILK	TM	CE	MCE
	-2.0	+54	+87	+25	+52	+15.0	+16.0

Calving ease, femininity and depth of body. A real "cow mans" kind of bull. We are very impressed with this A.I. sire. Females are excellent uddered females.



**Lot 107**

**LOT  
107**

**66 CHINOOK 100G**

MALE CKM 100G 2116887 APRIL 19 2019

SHIPWHEEL CHINOOK † 1582467

H A IMAGE MAKER 0415 †  
APEX ERISKAY 5506

66 LADY 298B 1805959

CONNELLY THUNDER †  
BAD LANDS LADY 8098U

AOD	BW	205D	EPDs	BW	WW	YW	MILK
6	74	691		-0.7	+54	+93	+23

**ALL BULLS HAVE BEEN SEMEN TESTED**

LOT  
108

### 66 CHINOOK 249G

MALE CKM 249G 2119613 APRIL 26 2019

SHIPWHEEL CHINOOK † 1582467

H A IMAGE MAKER 0415 †  
APEX ERISKAY 5506

DEER RIVER IDELETTE 217U 1476842

IRONWOOD NEW LEVEL †  
DEER RIVER IDELETTE 148H

AOD	BW	205D	EPDs	BW	WW	YW	MILK
12	97	813		+0.6	+57	+89	+28



Lot 109

LOT  
109

### 66 CHINOOK 172G

MALE CKM 172G 2116997 APRIL 23 2019

SHIPWHEEL CHINOOK † 1582467

H A IMAGE MAKER 0415 †  
APEX ERISKAY 5506

SOUTH FORK BARBARA 260Z 1709165

BAD LANDS FINAL ANSWER 107W  
BAD LANDS BARBARA 5008R

AOD	BW	205D	EPDs	BW	WW	YW	MILK
8	70	609		-1.9	+42	+64	+18



Lot 110

LOT  
110

### 66 CHINOOK 331G

MALE CKM 331G 2121572 APRIL 30 2019

SHIPWHEEL CHINOOK † 1582467

H A IMAGE MAKER 0415 †  
APEX ERISKAY 5506

66 MISS MANNERS 390A 1761137

BAD LANDS FORTE 16U  
DEER RIVER MISS MANNERS 159U †

AOD	BW	205D	EPDs	BW	WW	YW	MILK
7	88	635		+1.3	+42	+73	+24

217U

DAM OF  
LOT 108



447A

DAM OF  
LOT 111



Lot 111

LOT  
111

### 66 CHINOOK 222G

MALE CKM 222G 2117012 APRIL 26 2019

SHIPWHEEL CHINOOK † 1582467

H A IMAGE MAKER 0415 †  
APEX ERISKAY 5506

66 PRIDE 447A 1755622

V D A R REALLY WINDY 4097 †  
BAD LANDS PRIDE 1077Y

AOD	BW	205D	EPDs	BW	WW	YW	MILK
7	82	580		-0.2	+45	+78	+19







Lot 112

LOT  
112

### 66 CHINOOK 144G

MALE CKM 144G 2116952 APRIL 21 2019

SHIPWHEEL CHINOOK † 1582467

H A IMAGE MAKER 0415 †  
APEX ERISKAY 5506

DEER RIVER BURGESS 591U 1466192

DEER RIVER NITRO 165R  
DEER RIVER BURGESS 145H

AOD	BW	205D	EPDs	BW	WW	YW	MILK
12	68	589		-2.0	+36	+60	+26



Where Customers  
Become Friends

CATALOG & VIDEO ONLINE  
at www.66ranchltd.com & www.dvauction.com



Lot 113

LOT  
113

### 66 PAYWEIGHT 139G

MALE CKM 139G 2116951 APRIL 21 2019

BASIN PAYWEIGHT 1682 † 2010588

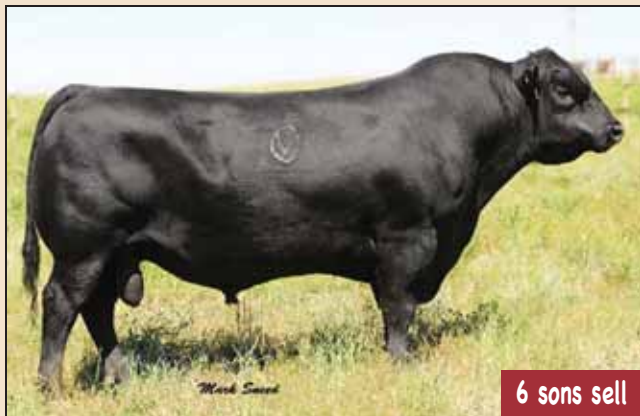
BASIN PAYWEIGHT 006S †  
21AR O LASS 7017

66 ZARA 510A 1760854

BAD LANDS FORTE 16U  
BAD LANDS ZARA 205M

AOD	BW	205D	EPDs	BW	WW	YW	MILK
7	88	678		+3.1	+49	+90	+27

## REFERENCE SIRE



6 sons sell

### BASIN PAYWEIGHT 1682

IMP 1682Y † 2010588 FEBRUARY 11 2011

BASIN PAYWEIGHT 006S † 15332050

VERMILION PAYWEIGHT J847 †  
BASIN LUCY 3829 †

21AR O LASS 7017 15875998

HARB PENDLETON 765 J H †  
21AR O LASS F24A

BW: 89

EPDs	BW	WW	YW	MILK	TM	CE	MCE
	+0.6	+67	+119	+32	+66	+7.0	+9.0

An A.I. sire with calving ease and powerful performance. These Payweight cattle are extremely easy fleshing with real thick top lines. Super attractive cattle, especially in our female pen. Loads of middle and extremely feminine!



Lot 114

LOT  
114

### 66 PAYWEIGHT 9027G

MALE CKM 9027G 2119638 APRIL 29 2019

BASIN PAYWEIGHT 1682 † 2010588

BASIN PAYWEIGHT 006S †  
21AR O LASS 7017

BAD LANDS LASSIE 100X 1555719

SANDY CREEK INITIATIVE 52T  
BAD LANDS LASSIE 5140R

AOD	BW	205D	EPDs	BW	WW	YW	MILK
10	85	724		+2.1	+61	+102	+30



Lot 115

LOT 115

**66 PAYWEIGHT 294G**  
 MALE CKM 294G 2119634 APRIL 29 2019

BASIN PAYWEIGHT 1682 † 2010588  
 DEER RIVER ZARA 609U 1466200

BASIN PAYWEIGHT 006S †  
 21AR O LASS 7017  
 DEER RIVER STOCKMAN 10R  
 DEER RIVER ZARA 29G

AOD	BW	205D	EPDs	BW	WW	YW	MILK
12	75	670		+0.8	+46	+72	+24



Lot 117

LOT 117

**66 PAYWEIGHT 117G**  
 MALE CKM 117G 2112856 APRIL 20 2019

BASIN PAYWEIGHT 1682 † 2010588  
 DEER RIVER HAPPENINGS 51W 1518278

BASIN PAYWEIGHT 006S †  
 21AR O LASS 7017  
 DEER RIVER DANDY 86N  
 WHS HAPPENING'S 32H

AOD	BW	205D	EPDs	BW	WW	YW	MILK
11	70	595		-1.0	+40	+65	+26



Lot 116

LOT 116

**66 PAYWEIGHT 134G**  
 MALE CKM 134G 2116948 APRIL 21 2019

BASIN PAYWEIGHT 1682 † 2010588  
 SOUTH FORK IDELETTE 437Z 1677465

BASIN PAYWEIGHT 006S †  
 21AR O LASS 7017  
 BAD LANDS FORTE 327X  
 DEER RIVER IDELETTE 185W †

AOD	BW	205D	EPDs	BW	WW	YW	MILK
8	82	561		+0.2	+36	+68	+18



437Z  
 DAM OF  
 LOT 116



51W  
 DAM OF  
 LOT 117





# REFERENCE SIRE

## V D A R CEDAR WIND 8111

IMP 8111Y 1751551 JANUARY 06 2011

COLE CREEK CEDAR RIDGE 1V † 1659099

COLE CREEK BLACK CEDAR 46P †  
COLE CREEK CLOVANADA 49S

V D A R CHLOE 9727 16434284

V D A R REALLY WINDY 4097 †  
V D A R CHLOE 6320

EPDs	BW	WW	YW	MILK	TM	CE	MCE
	-1.4	+48	+84	+27	+51	+11.0	+12.0

An A.I. heifer bull we used from Cole Creek bloodlines. Extreme docility with a very moderate birth weight and has excellent performance. We ourselves are very pleased with the growth of these cattle after they were weaned, competing very well with all the other performance sires. Once again, going back to Cedar Ridge these cattle are displaying that natural ease of flesh. The real "cow mans" kind of cattle! Excellent females sired by Cedar Wind with superb udders.



TWO-YEAR-OLD SONS SELL AS LOTS 56-57



LOT 118

### 66 CEDAR WIND 25G

MALE CKM 25G 2116716 APRIL 14 2019

V D A R CEDAR WIND 8111 1751551

COLE CREEK CEDAR RIDGE 1V †  
V D A R CHLOE 9727

BAD LANDS BLACKCAP 1085Y 1615347

MYTTY IN FOCUS †  
BAD LANDS BLACKCAP 9005W

AOD	BW	205D	EPDs	BW	WW	YW	MILK
9	87	693		-0.1	+50	+84	+28

LOT 119

### 66 CEDAR WIND 2G

MALE CKM 2G 2116709 APRIL 06 2019

V D A R CEDAR WIND 8111 1751551

COLE CREEK CEDAR RIDGE 1V †  
V D A R CHLOE 9727

66 ELINE LASS 32A 1738731

BAD LANDS ALLIANCE 326X  
SOUTH FORK ELINE LASS 166Y

AOD	BW	205D	EPDs	BW	WW	YW	MILK
7	53	563		-4.5	+33	+54	+28

66 RANCH CEDAR WIND HEIFER



32A DAM OF LOT 119



#### AVERAGE BLACK ANGUS EPDS FOR ALL CALVES BORN IN 2019

EPDs	BW	WW	YW	MILK	TM	CE	MCE
	+2.1	+47	+83	+22	+45	+3.5	+7.2



**LOT  
120**

**66 CEDAR WIND 121G**

MALE CKM 121G 2116907 APRIL 20 2019

V D A R CEDAR WIND 8111 1751551

COLE CREEK CEDAR RIDGE 1V ‡  
V D A R CHLOE 9727

66 ROSEBUD 258E 1997305

STUART CHISM 82A  
66 ROSEBUD 37A

AOD	BW	205D	EPDs	BW	WW	YW	MILK
3	<b>70</b>	605		-0.1	+47	+81	+15



**LOT  
122**

**66 CEDAR WIND 226G**

MALE CKM 226G 2119608 APRIL 26 2019

V D A R CEDAR WIND 8111 1751551

COLE CREEK CEDAR RIDGE 1V ‡  
V D A R CHLOE 9727

66 DUCHESS 124E 1997185

STUART CHISM 82A  
66 DUCHESS 143A

AOD	BW	205D	EPDs	BW	WW	YW	MILK
3	<b>71</b>	555		-0.8	+42	+72	+16



**LOT  
121**

**66 CEDAR WIND 224G**

MALE CKM 224G 2119607 APRIL 26 2019

V D A R CEDAR WIND 8111 1751551

COLE CREEK CEDAR RIDGE 1V ‡  
V D A R CHLOE 9727

66 BLACKBIRD 313E 2000207

F-R CEDAR RIDGE 4210  
66 BLACKBIRD 134C

AOD	BW	205D	EPDs	BW	WW	YW	MILK
3	<b>76</b>	642		+0.3	+45	+78	+24



**LOT  
123**

**66 CEDAR WIND 163G**

MALE CKM 163G 2116958 APRIL 22 2019

V D A R CEDAR WIND 8111 1751551

COLE CREEK CEDAR RIDGE 1V ‡  
V D A R CHLOE 9727

66 LILIC 416E 1997536

66 ALLIANCE 17Z  
DEER RIVER LILAC 9R

AOD	BW	205D	EPDs	BW	WW	YW	MILK
3	<b>68</b>	585		+0.6	+45	+76	+24

VIEW THE BULLS AT THE RANCH PRIOR TO THE SALE







Lot 124



Lot 126

LOT  
124

**66 CEDAR WIND 166G**  
MALE CKM 166G 2112862 APRIL 23 2019

V D A R CEDAR WIND 8111 1751551

COLE CREEK CEDAR RIDGE 1V ‡  
V D A R CHLOE 9727

66 ENCHANTRESS 368E 1997409

COLE CREEK 1100 BLACK 1144  
66 ENCHANTRESS 288B

AOD	BW	205D	EPDs	BW	WW	YW	MILK
3	<b>85</b>	555		+2.6	+35	+67	+23

LOT  
126

**66 CEDAR WIND 241G**  
MALE CKM 241G 2119612 APRIL 26 2019

V D A R CEDAR WIND 8111 1751551

COLE CREEK CEDAR RIDGE 1V ‡  
V D A R CHLOE 9727

66 LOVEMERE 631E 1997705

66 ALLIANCE 222B  
SOUTH FORK LOVEMERE 187Y

AOD	BW	205D	EPDs	BW	WW	YW	MILK
3	<b>81</b>	575		+2.0	+43	+76	+22



Lot 125



Lot 127

LOT  
125

**66 CEDAR WIND 302G**  
MALE CKM 302G 2119636 APRIL 29 2019

V D A R CEDAR WIND 8111 1751551

COLE CREEK CEDAR RIDGE 1V ‡  
V D A R CHLOE 9727

66 ERICA 235E 1997284

STUART CHISM 82A  
BAD LANDS ERICA 86X

AOD	BW	205D	EPDs	BW	WW	YW	MILK
3	<b>72</b>	561		-0.3	+42	+73	+16

LOT  
127

**66 CEDAR WIND 89G**  
MALE CKM 89G 2116903 APRIL 18 2019

V D A R CEDAR WIND 8111 1751551

COLE CREEK CEDAR RIDGE 1V ‡  
V D A R CHLOE 9727

66 DUCHESS 287E 1997335

STUART CHISM 82A  
66 DUCHESS 488A

AOD	BW	205D	EPDs	BW	WW	YW	MILK
3	<b>69</b>	515		+0.2	+37	+66	+14

BID ONLINE - BID BY PHONE - CALL 66 RANCH OR ANY OF OUR SALE STAFF



## REFERENCE SIRE

### 66 BOBCAT 271B

CKM 271B 1819742 APRIL 20 2014

WK BOBCAT † 1655479

SOUTH FORK LASSIE 13Z 1677095

BW: 67 205D: 659 365D: 1134

CONNEALY RIGHT ANSWER 746 †  
WK MISS ANGUS 7127

HIGH VALLEY 4C6 AMBUSH †  
BAD LANDS LASSIE 4008P

EPDs	BW	WW	YW	MILK	TM	CE	MCE
	+1.3	+54	+88	+23	+50	+10.0	+13.0

A walking bull at the ranch raised by us. A Bobcat bred son which will give you the females you want with perfect udder structure, ease of flesh and with a moderate birthweight that can go either on the heifers or the growth that will let you use them on the cows too.

**1 son sells**



LOT  
128

### 66 BOBCAT 202G

MALE CKM 202G 2112867 APRIL 25 2019

66 BOBCAT 271B 1819742

WK BOBCAT †  
SOUTH FORK LASSIE 13Z

66 MISS MANNER 56D 1929992

66 ALLIANCE 17Z  
66 MISS MANNERS 390A

AOD	BW	205D	EPDs	BW	WW	YW	MILK
4	86	712		+3.5	+62	+104	+23



THANK YOU TO

*Sarah Buchanan*

at Golden Thread Livestock Images for doing such an amazing job of taking the pictures and videos of the bulls

*Rose Currie* - for cleaning up the bulls

*Jan Lee* - for designing the catalog

## REFERENCE SIRE



### EF COMMANDO 1366

IMP 1366Y † 1887295 AUGUST 25 2011

EF COMPLEMENT 8088 † 16198796

BASIN FRANCHISE P142 †  
EF EVERELDA ENTENSE 6117

RIVERBEND YOUNG LUCY W1470 † 16543240

B/R AMBUSH 28 †  
RIVERBEND YOUNG LUCY T1080

EPDs	BW	WW	YW	MILK	TM	CE	MCE
	-0.8	+58	+99	+28	+57	+12.0	+9.0

An A.I. sire we used. Genex Semen Sales says a no-miss calving ease sire. With a 60 lb. BW to 673 lb. WW and 991 lb. YW looks to be true.

TWO YEAR OLD SON SELLS AS LOT 63





**230A**  
DAM OF  
LOT 129



**LOT 129**

**66 COMMANDO 61G**

MALE CKM 61G 2112846 APRIL 17 2019

EF COMMANDO 1366 † 1887295

EF COMPLEMENT 8088 †  
RIVERBEND YOUNG LUCY W1470 †

66 IDELETTE 230A 1738881

HIGH VALLEY 4C6 AMBUSH †  
DEER RIVER IDELETTE 157L

AOD	BW	205D	EPDs	BW	WW	YW	MILK
7	89	727		+2.5	+52	+85	+27



**LOT 130**

**66 COMMANDO 53G**

MALE CKM 53G 2116724 APRIL 16 2019

EF COMMANDO 1366 † 1887295

EF COMPLEMENT 8088 †  
RIVERBEND YOUNG LUCY W1470 †

66 MIDDLEBROOK 485B 1814536

BAD LANDS FINAL ANSWER 107W  
DEER RIVER MIDDLEBROOK 459U

AOD	BW	205D	EPDs	BW	WW	YW	MILK
6	69	671		-1.6	+49	+79	+22

**REFERENCE SIRE**

**66 RIGHT TIME 326D**

CKM 326D 1937174 APRIL 25 2016

LEACHMAN RIGHT TIME † 779510

N BAR EMULATION EXT †  
LEACHMAN ERICA 0025

BAD LANDS LASSIE 1044Y 1655922

BAD LANDS ALLIANCE 14W  
BAD LANDS LASSIE 5124R

BW: 84 205D: 717 365D: 1143

EPDs	BW	WW	YW	MILK	TM	CE	MCE
	+1.4	+66	+95	+21	+54	+2.0	+9.0

A walking bull raised at 66 Ranch. What a maternal powerhouse!! Leachman Right Time on top and the dam is one of the best Alliance bred females at the Ranch. Longevity from the Right Time, we've had Right Time cows last until 17 years old. The Alliance gives you the perfect udders you are looking for as well as the extreme docility we all like. The neat thing with Alliance bred into the Right Time is this sire has great scrotal, passing it onto his progeny.

**2 sons sell**

TWO YEAR OLD SON SELLS AS LOT 25



**LOT 131**

**66 RIGHT TIME 94G**

MALE CKM 94G 2112849 APRIL 19 2019

66 RIGHT TIME 326D 1937174

LEACHMAN RIGHT TIME †  
BAD LANDS LASSIE 1044Y

66 JOSSIE 254C 1867320

66 ALLIANCE 17Z  
SOUTH FORK JOSSIE 20X

AOD	BW	205D	EPDs	BW	WW	YW	MILK
5	78	668		+1.3	+56	+79	+21

SALES  
TALK





**LOT  
132**

**66 SEVEN SON 174G**

MALE CKM 174G 2112863 APRIL 23 2019

COLE CREEK SEVEN SON 1394 1844692

COLE CREEK SEVEN SON 67T  
COLE CREEK JUANADALEEN 1240

SOUTH FORK COUNTESS 141Z 1677211

KMK ALLIANCE 6595 187 †  
BAD LANDS COUNTESS 214M †

AOD	BW	205D	EPDs	BW	WW	YW	MILK
8	88	714		+3.6	+57	+102	+20



**8114U**

DAM OF  
LOT 133

**REFERENCE SIRE**

**COLE CREEK SEVEN SON 1394**

IMP 1394B 1844692 FEBRUARY 27 2014

COLE CREEK SEVEN SON 67T 15483012

JUANADA 7 OF P J M  
COLE CREEK CLOVANADA 136M

COLE CREEK JUANADALEEN 1240 16723834

COLE CREEK BLACK CEDAR 46P †  
COLE CREEK JUANADALEEN 51S

EPDs	BW	WW	YW	MILK	TM	CE	MCE
	+5.8	+46	+93	+16	+39	-7.0	+1.0

A walking bull we purchased from Cole Creek Angus in 2015. Goes back on the sire side to some older genetics, Juanada 7 of PJM. On our tour of Cole creek Angus, Malissa and I were absolutely amazed by the quality of females sired by this Juanada bull. Absolutely impeccable udders on those females. Really excited about 1394B because he sure stamped an incredible set of bull calves for this years sale. Very impressive!

**9 sons sell**

TWO YEAR OLD SONS SELL AS LOTS 26-32



**LOT  
133**

**66 SEVEN SON 316G**

MALE CKM 316G 2112876 APRIL 30 2019

COLE CREEK SEVEN SON 1394 1844692

COLE CREEK SEVEN SON 67T  
COLE CREEK JUANADALEEN 1240

BAD LANDS RIBBON 8114U 1429238

HBR ECLIPSE 7116  
IRON SPRING BLUR RIBBON HUSK

AOD	BW	205D	EPDs	BW	WW	YW	MILK
12	75	676		+1.8	+36	+65	+17







**326U**  
DAM OF  
LOT 134  
&  
66  
THUNDER  
296B

## REFERENCE SIRE



2 sons sell

### CONNELY THUNDER

IMP 587R † 1385922 JANUARY 28 2005

BALDRIDGE KABOOM K243 KCF † 13987017

JAUER 353 TRAVELER 589 27  
PLEASANTA OF CONANGA 736

PARKA OF CONANGA 241 † 13948273

BON VIEW BANDO 598 †  
PARTINA OF CONANGA 6237

EPDs	BW	WW	YW	MILK	TM	CE	MCE
	-1.0	+42	+83	+24	+45	+9.0	+13.0

An A.I sire we are still really excited about. Thunder produces deep and thick attractive females. Real Angus looking cattle. Udders are near perfect. His bull calves definitely have that "extra rib." Super long, deep sided cattle. He sure puts the hip on his calves and yet maintains that calving ease we all look for. Appears to be that all around perfect bull!

## REFERENCE SIRE



2 sons sell

### VIEWLAWN PROSPER 829

EPDs	BW	WW	YW	MILK	TM	CE	MCE
	-2.8	+51	+101	+21	+47	+13.0	+12.0

TWO YEAR OLD SON SELLS AS LOT 36



Lot 134

LOT  
134

### 66 THUNDER 197G

MALE CKM 197G 2117003 APRIL 24 2019

CONNELY THUNDER † 1385922

BALDRIDGE KABOOM K243 KCF †  
PARKA OF CONANGA 241 †

DEER RIVER BLACKBIRD 326U 1467553

DEER RIVER STOCKMAN 7R  
DEER RIVER BLACKBIRD 299R

AOD	BW	205D	EPDs	BW	WW	YW	MILK
12	84	733		+2.2	+49	+83	+23

LOT  
135

### 66 THUNDER 88G

MALE CKM 88G 2116902 APRIL 18 2019

CONNELY THUNDER † 1385922

BALDRIDGE KABOOM K243 KCF †  
PARKA OF CONANGA 241 †

66 GEORGINA 76E 1997141

V D A R CEDAR WIND 8111  
BAD LANDS GEORGINA 1111Y

AOD	BW	205D	EPDs	BW	WW	YW	MILK
3	66	622		-1.6	+39	+68	+23



Lot 136

LOT  
136

### 66 PROSPER 132G

MALE CKM 132G 2116947 APRIL 21 2019

VIEWLAWN PROSPER 829 † 1766544

VIEWLAWN MAINLINE 17  
VIEWLAWN 114 NF 1077

66 G V LASS 531E 1997632

F-R MECHANIC 4086  
DEER RIVER G V LASS 215W

AOD	BW	205D	EPDs	BW	WW	YW	MILK
3	73	664		+1.3	+54	+102	+22

## REFERENCE SIRE

### S A V RESOURCE 1441

IMP 1441Y †1707295 JANUARY 07 2011

RITO 707 OF IDEAL 3407 7075 † 2069908

R R RITO 707 †  
IDEAL 3407 OF 1418 076

S A V BLACKCAP MAY 4136 † 14739095

S A V 8180 TRAVELER 004 †  
S A V MAY 2397 †

EPDs	BW	WW	YW	MILK	TM	CE	MCE
	+4.0	+70	+133	+18	+53	+1.0	-1.0

We've seen Resource at Genex Stud in Billings. A very moderate bull, extra rib x2, and super heel under this bull. Progeny are deep, deep, sided. Females are extremely feminine with super udder structure.



3 sons sell



Lot 137



1146Y

DAM OF  
LOT 137



Lot 138



Lot 139

LOT  
137

S A V RESOURCE 1441 † 1707295

BAD LANDS GERTIE 1146Y 1615451

AOD	BW	205D	EPDs	BW	WW	YW	MILK
9	87	669		+3.0	+57	+94	+18

### 66 RESOURCE 167G

MALE CKM 167G 2116994 APRIL 23 2019

RITO 707 OF IDEAL 3407 7075 †  
S A V BLACKCAP MAY 4136 †

BAD LANDS ALLIANCE 44T  
BAD LANDS GERTIE 9112W

LOT  
138

S A V RESOURCE 1441 † 1707295

SOUTH FORK IDELETTE 183Y 1626594

AOD	BW	205D	EPDs	BW	WW	YW	MILK
9	88	652		+3.8	+55	+100	+15

### 66 RESOURCE 218G

MALE CKM 218G 2117009 APRIL 26 2019

RITO 707 OF IDEAL 3407 7075 †  
S A V BLACKCAP MAY 4136 †

DEER RIVER PLUS 464T  
DEER RIVER IDELETTE 352W

LOT  
139

S A V RESOURCE 1441 † 1707295

SOUTH FORK IDELETTE 382Z 1677421

AOD	BW	205D	EPDs	BW	WW	YW	MILK
8	90	694		+3.5	+57	+109	+20

### 66 RESOURCE 216G

MALE CKM 216G 2117008 APRIL 26 2019

RITO 707 OF IDEAL 3407 7075 †  
S A V BLACKCAP MAY 4136 †

B C MATRIX 4132 †  
DEER RIVER IDELETTE 469P



## REFERENCE SIRE

### COLE CREEK BLACK CEDAR 46P

IMP 46N 1605479 FEBRUARY 16 2003

C H QUANTUM 6247 12687606

C H QUANTUM 3330  
C H BLACKBIRD 0136

COLE CREEK CLOVA JUANADA 67 12872634

A A R WINDY RIDGE 523  
COLE CREEK CLOVA JUANADA 811

EPDs	BW	WW	YW	MILK	TM	CE	MCE
	+2.3	+46	+83	+20	+43	+2.0	+5.0

Maternal, Maternal, Maternal! 46P was raised by Cole Creek Angus in Billings, Montana. Possibly one of the best herds we have been in. Not a bad foot or udder to be found. We saw a large number of 46P sired cows that were 13 years old at the time, that being the reason we sourced 46P semen to use in our herd. Along with the super strong maternal side, 46P has sired some dandy bull calves. Real easy fleshing, deep sided cattle.



3 sons sell

TWO YEAR OLD SON SELL AS LOT 66

## - ET FULL BROTHERS -



Lot 140



Lot 141

LOT  
140

### 66 BLACK CEDAR 165G

MALE CKM 165G 2119604 ET APRIL 22 2019

COLE CREEK BLACK CEDAR 46P † 1605479

C H QUANTUM 6247  
COLE CREEK CLOVA JUANADA 67

BAD LANDS BARBARA 9061W 1502416

HBR ECLIPSE 7116  
BAD LANDS BARBARA 168L

AOD	BW	205D	EPDs	BW	WW	YW	MILK
11	91	705		+1.8	+36	+56	+17

LOT  
141

### 66 BLACK CEDAR 314G

MALE CKM 314G 2119643 ET APRIL 30 2019

COLE CREEK BLACK CEDAR 46P † 1605479

C H QUANTUM 6247  
COLE CREEK CLOVA JUANADA 67

BAD LANDS BARBARA 9061W 1502416

HBR ECLIPSE 7116  
BAD LANDS BARBARA 168L

AOD	BW	205D	EPDs	BW	WW	YW	MILK
11	90	713		+2.6	+42	+66	+16



**BUY A BULL & YOU COULD  
WIN A 66 RANCH HEIFER!**

DRAW FOR BUYERS AFTER THE SALE

For all purchases made  
Online - on Phone - in Person  
DETAILS ON PAGE 19

9061W

DAM OF  
LOTS  
140 & 141

&

REF SIRE  
66 SEVEN  
SON 26D



CHECK OUR WEBSITE  
[WWW.66RANCHLTD.COM](http://WWW.66RANCHLTD.COM)  
FOR SALE UPDATES



Lot 142



Lot 143



Lot 144



Lot 145

**REFERENCE SIRE**

**66 CEDAR WIND 178C**

CKM 178C ± 1867240 APRIL 19 2015

V D A R CEDAR WIND 8111 1751551

COLE CREEK CEDAR RIDGE 1V ±  
V D A R CHLOE 9727

BAD LANDS COUNTESS 5032R 1270120

HERO 6267 OF R R 2418 OSF  
BAD LANDS COUNTESS 351N

BW: 73 205D: 664 365D: 1117

EPDs	BW	WW	YW	MILK	TM	CE	MCE
	-1.5	+53	+82	+26	+53	+12.0	+12.0

A walking bull raised at 66 Ranch. We selected 178C for heifers. Bull calves average 81 lbs. at birth, heifer calves 74 lbs. 178C has great performance and a dam cowboys would love. A moderate deep sided Hero bred cow. Hero cattle are very well known for their extreme docility. Maternal Grandam is a Leachman Right Time bred cow. Pretty confident you will want to keep all the females.

**4 sons sell**

**LOT 142**

**66 CEDAR WIND 156G**

MALE CKM 156G 2112859 APRIL 22 2019

66 CEDAR WIND 178C 1867240

V D A R CEDAR WIND 8111  
BAD LANDS COUNTESS 5032R

66 ANNE 308D 1930237

PEAKE HONESTY 203B  
BAD LANDS ANNE 1090Y

AOD	BW	205D	EPDs	BW	WW	YW	MILK
4	82	716		+1.8	+57	+85	+24

**LOT 143**

**66 CEDAR WIND 318G**

MALE CKM 318G 2112877 APRIL 30 2019

66 CEDAR WIND 178C 1867240

V D A R CEDAR WIND 8111  
BAD LANDS COUNTESS 5032R

66 BARBARA 638D 1935934

66 THUNDER 296B  
BAD LANDS BARBARA 4014P

AOD	BW	205D	EPDs	BW	WW	YW	MILK
4	71	634		-0.5	+46	+70	+24

**LOT 144**

**66 CEDAR WIND 157G**

MALE CKM 157G 2112860 APRIL 22 2019

66 CEDAR WIND 178C 1867240

V D A R CEDAR WIND 8111  
BAD LANDS COUNTESS 5032R

66 ZARA 100D 1930029

66 ALLIANCE 17Z  
SOUTH FORK ZARA 157Y

AOD	BW	205D	EPDs	BW	WW	YW	MILK
4	68	664		-0.7	+59	+96	+19

**LOT 145**

**66 CEDAR WIND 43G**

MALE CKM 43G 2112841 APRIL 15 2019

66 CEDAR WIND 178C 1867240

V D A R CEDAR WIND 8111  
BAD LANDS COUNTESS 5032R

66 BARBARA 360D 1930286

66 ALLIANCE 17Z  
SOUTH FORK BARBARA 486Z

AOD	BW	205D	EPDs	BW	WW	YW	MILK
4	68	636		-0.6	+52	+81	+23

**360D**

DAM OF  
LOT 145





# REFERENCE SIRE

## 66 SEVEN SON 26D

CKM 26D 1929966 TWIN APRIL 09 2016

COLE CREEK SEVEN SON 1394 1844692

COLE CREEK SEVEN SON 67T  
COLE CREEK JUANADALEEN 1240

BAD LANDS BARBARA 9061W 1502416

HBR ECLIPSE 7116  
BAD LANDS BARBARA 168L

BW: 92 205D: 642 365D: 1208

EPDs	BW	WW	YW	MILK	TM	CE	MCE
	+6.0	+51	+85	+14	+40	-3.0	+8.0

A bull raised at 66 Ranch purchased by the Sewall Brothers at our 2017 Spring Sale. 9061W, the dam is in our flush program at 66 Ranch. So we thought it would be foolish not to use semen out of this "Super Star!" 26D will give you deep sided cattle with super top lines. And of course the maternal side is fantastic, if you are looking to make deep sided, perfect uddered, feminine cows that stand up in tough conditions, give this sire group a look.

**4 sons sell**



Lot 146

LOT 146

## 66 SEVEN SON 17G

MALE CKM 17G 2112831 APRIL 13 2019

66 SEVEN SON 26D 1929966

COLE CREEK SEVEN SON 1394  
BAD LANDS BARBARA 9061W

BAD LANDS DELIA 1080Y 1615343

NLC FEATURE ATTRACTION 3W  
BAD LANDS DELIA 5031R

AOD	BW	205D	EPDs	BW	WW	YW	MILK
9	83	715		+4.0	+53	+81	+20



1080Y

DAM OF LOT 146

9061W

DAM OF REF SIRE  
66 SEVEN SON 26D

&

ET DAM OF LOTS 140 & 141



Lot 147

LOT 147

## 66 SEVEN SON 9G

MALE CKM 9G 2112830 APRIL 11 2019

66 SEVEN SON 26D 1929966

COLE CREEK SEVEN SON 1394  
BAD LANDS BARBARA 9061W

66 LASSIE 94C 1867154

BAD LANDS ATTRACTION 109Y  
BAD LANDS LASSIE 24X

AOD	BW	205D	EPDs	BW	WW	YW	MILK
5	87	646		+4.4	+46	+78	+17



Lot 148

LOT 148

## 66 SEVEN SON 219G

MALE CKM 219G 2117010 APRIL 26 2019

66 SEVEN SON 26D 1929966

COLE CREEK SEVEN SON 1394  
BAD LANDS BARBARA 9061W

SOUTH FORK IDELETTE 274Z 1677322

SINCLAIR EXCELLENCY 5X25 †  
DEER RIVER IDELETTE 137P

AOD	BW	205D	EPDs	BW	WW	YW	MILK
8	100	673		+5.1	+50	+85	+19

† Indicates at least 1 genetic condition test with a free result



Lot 149

LOT  
149

## 66 SEVEN SON 269G

MALE CKM 269G 2121558 APRIL 28 2019

66 SEVEN SON 26D 1929966

COLE CREEK SEVEN SON 1394  
BAD LANDS BARBARA 9061W

66 BLACKCLASS 40B 1805723

WK BOBCAT †  
SOUTH FORK BLACKCLASS 182Z

AOD	BW	205D	EPDs	BW	WW	YW	MILK
6	84	681		+3.1	+50	+85	+21



Lot 150



Lot 151

WE WOULD REALLY LIKE TO **THANK**  
ALLEN LIVELY AND DARREN SHAW  
AND ALL THE SUPER STAFF AT  
**SOUTHERN ALBERTA LIVESTOCK**  
**EXCHANGE** FOR THE PAST 8 YEARS.  
AN ABSOLUTE AMAZING GROUP OF  
PEOPLE AND KNOWLEDGEABLE  
CATTLEMEN AND WOMEN AROUND  
THE S.A.L.E. GROUP AND TEAM.

## REFERENCE SIRE



3 sons sell

## HOOVER ELATION M123

IMP 0123A † 1947549 FEBRUARY 13 2013

BASIN EXCITEMENT † 1688134

BASIN EXPEDITION R156 †  
BASIN LADY S532 AK

PRIDE OF ELLSTON K68 16999081

SYDGEN C C & 7 †  
PRIDE OF ELLSTON D58

BW: 60

EPDs	BW	WW	YW	MILK	TM	CE	MCE
	-2.0	+50	+101	+25	+50	+12.0	+12.0

An A.I. sire we chose to use on heifers. Super calving ease bull with an added punch of performance. The sire on the dam side of Elation is a cow making machine. Sydgen CC&7 makes beautiful uddered females.

LOT  
150

## 66 ELATION 9003G

MALE CKM 9003G 2116719 APRIL 14 2019

HOOVER ELATION M123 † 1947549

BASIN EXCITEMENT †  
PRIDE OF ELLSTON K68

66 KEEPSAKE 7041E 1997275

66 THUNDER 296B  
DEER RIVER KEEPSAKE 269U †

AOD	BW	205D	EPDs	BW	WW	YW	MILK
3	<b>76</b>	618		+0.8	+38	+72	+23

LOT  
151

## 66 ELATION 325G

MALE CKM 325G 2112878 APRIL 30 2019

HOOVER ELATION M123 † 1947549

BASIN EXCITEMENT †  
PRIDE OF ELLSTON K68

66 MIDDLEBROOK 586E 2005012

F-R CEDAR RIDGE 4210  
66 MIDDLEBROOK 367C

AOD	BW	205D	EPDs	BW	WW	YW	MILK
3	<b>68</b>	624		+0.1	+48	+88	+22





Lot 152

FOR ONLINE REGISTRATION HELP  
CONTACT KELSEY 403-362-0672  
OR MALISSA 403-501-9358

**DVAuction**  
www.dvauction.com



Lot 153

LOT  
152

**66 ELATION 90G**

MALE CKM 90G 2116904 APRIL 19 2019

HOOVER ELATION M123<sup>+</sup> 1947549

BASIN EXCITEMENT<sup>+</sup>  
PRIDE OF ELLSTON K68

66 ROSEBUD 181E 1997233

V D A R CEDAR WIND 8111  
66 ROSEBUD 436A

AOD	BW	205D	EPDs	BW	WW	YW	MILK
3	<b>71</b>	518		+0.6	+36	+74	+19



**REFERENCE SIRE**



2 sons sell

**HILLTOP TRUE GRIT 9202**

IMP 9202W 1934390 JANUARY 29 2009

SITZ ALLIANCE 7544 14658781

SITZ ALLIANCE 6595<sup>+</sup>  
SITZ PRIDE 2561

HILLTOP CANDY LASS 713 15924051

ER BUSHWACKER 06P1  
HILLTOP CANDY LASS T9

BW: 68

EPDs	BW	WW	YW	MILK	TM	CE	MCE
	-0.3	+58	+96	+24	+53	+14.0	+5.0

A low birth weight sire with tremendous growth. After A.I.ing 50+ heifers to True Grit we have confidence he can be used safely on heifers. Females are excellent uddered, easy keeping and deep sided. Looking like another all-around kind of bull.

LOT  
153

**66 TRUE GRIT 122G**

MALE CKM 122G 2116908 APRIL 20 2019

HILLTOP TRUE GRIT 9202 1934390

SITZ ALLIANCE 7544  
HILLTOP CANDY LASS 713

66 ROSETTE 121E 1997182

CONNELLY THUNDER<sup>+</sup>  
66 ROSETTE 4C

AOD	BW	205D	EPDs	BW	WW	YW	MILK
3	<b>75</b>	644		-0.4	+49	+85	+23



Lot 154

LOT  
154

**66 TRUE GRIT 206G**

MALE CKM 206G 2117007 APRIL 25 2019

HILLTOP TRUE GRIT 9202 1934390

SITZ ALLIANCE 7544  
HILLTOP CANDY LASS 713

66 PRIDE 355E 1997398

COLE CREEK CEDAR RIDGE 181  
BAD LANDS PRIDE 1126Y

AOD	BW	205D	EPDs	BW	WW	YW	MILK
3	<b>66</b>	655		-1.2	+47	+81	+25

## REFERENCE SIRE

### COLE CREEK CEDAR 1346

IMP 1346D 1963227 FEBRUARY 02 2016

COLE CREEK CEDAR 791 17039944

C H QUANTUM 6247  
COLE CREEK CLOVA JUANADA 44N

COLE CREEK 104 JUANADA 1041 US17040023

COLE CREEK GOLDMERE 70V  
COLE CREEK 104 JUANADA 107V

BW: 65 205D: 564

EPDs	BW	WW	YW	MILK	TM	CE	MCE
	-4.7	+10	+32	+29	+34	+14.0	+10.0

A walking bull purchased from Cole Creek Angus. An absolute "sleep all night" heifer bull. This bull has one of the prettiest heads we have ever seen on an Angus bull. Easy keeper, super female maker, and growth factor we all want outside of the cow.

**2 sons sell**



LOT  
**156**

### 66 CEDAR 55G

MALE CKM 55G 2112844 APRIL 17 2019

COLE CREEK CEDAR 1346 1963227

COLE CREEK CEDAR 791  
COLE CREEK 104 JUANADA 1041

66 PRIDE 555E 2009746

PEAKE HONESTY 203B  
BAD LANDS PRIDE 8006U

AOD	BW	205D	EPDs	BW	WW	YW	MILK
3	<b>68</b>	546		-1.5	+18	+39	+25

LOT  
**155**

### 66 CEDAR 54G

MALE CKM 54G 2116893 APRIL 17 2019

COLE CREEK CEDAR 1346 1963227

COLE CREEK CEDAR 791  
COLE CREEK 104 JUANADA 1041

66 ZARA JUMBO 195E 1997250

66 ALLIANCE 17Z  
66 ZARA JUMBO 44A

AOD	BW	205D	EPDs	BW	WW	YW	MILK
3	<b>75</b>	605		-0.4	+32	+62	+24

-----  
**THANK YOU**  
TO JON LATRACE TRUCKING  
The Latrace Family  
-----



-----  
PLEASE BRING THIS CATALOG WITH YOU  
WHEN YOU VIEW THE BULLS & TO THE SALE  
-----



-----  
JOIN US AFTER THE SALE  
FOR A LITTLE  
"SOCIALLY APPROPRIATE"  
COUNTRY HOSPITALITY  
-----

*Cheers to being back to normal next year!*



*Thanks for the support!*

We want to thank our customers and all who participated in our last bull sale. Your support is greatly appreciated. We look forward to seeing you at our sale. To our new customers, a warm welcome. Whether a bull gets bought or not, we look forward to visiting with all of you after the sale.

*Kelsey, Malissa, Brett and Carter*

## UPCOMING 66 RANCH SALES

### 66 RANCH PAIR SALE

**MAY 15, 2020** at 1:00 pm  
at Bow Slope Shipping, Brooks, AB

Featuring:

- 70** 66 Ranch registered 2nd calvers with calves at foot  
- Selling as Commercial -
- 80** 66 Ranch registered cows with calves at foot  
- Selling as Commercial -
- 150** fancy black commercial 1st calvers  
with calves at foot NVB

For more details contact Kelsey @ 403-362-0672

### FALL BULL & FEMALE SALE

**DECEMBER 9, 2020** at 1:00 pm  
at Bow Slope Shipping, Brooks, AB

Featuring:

- Coming 2 Year Old Black Angus Bulls  
from our April calving program
- 66 Ranch Commercial Bred Heifers NVB
- 66 Ranch Purebred Black Angus Bred Heifers  
- Selling as Commercial -

Please email or call for details.

Kelsey: 403-362-0672 email: 66@66ranchltd.com

## TERMS & CONDITIONS

**TERMS** - TERMS OF THIS SALE ARE CASH OR CHEQUE PAYABLE IN CANADIAN FUNDS. THE RIGHT TO PROPERTY SHALL NOT PASS UNTIL AFTER SETTLEMENT HAS BEEN MADE. ALL SETTLEMENTS MUST BE MADE WITH THE CLERKS OF THE SALE BEFORE CATTLE WILL BE RELEASED.

**BIDS** - EVERY ANIMAL ENTERING THE RING WILL BE SOLD TO THE HIGHEST BIDDER; AUCTIONEER'S DECISION WILL BE FINAL.

**PURCHASERS RISK** - EACH ANIMAL BECOMES THE RISK OF THE PURCHASER AS SOON AS SOLD. INSURANCE WILL BE AVAILABLE SALE DAY.

**CATTLE INSPECTION** - ALL CATTLE WILL CARRY IDENTIFICATION TAGS CORRESPONDING TO SALE LOT NUMBERS THEY ALSO WILL HAVE R.F.I.D. TAGS.

**ANNOUNCEMENTS** - ERRORS OR OMISSIONS IN THE CATALOG WILL BE ANNOUNCED BEFORE SALE AND ANY CORRECTIONS WILL TAKE PRECEDENCE OVER PRINTED MATTER IN THE CATALOG.

**BREEDING GUARANTEE** - ALL CATTLE ARE SOUND AND RIGHT AND SELL WITH "RESPONSIBLE BREEDER GUARANTEE AND SATISFACTION". IN THE EVENT OF AN UNLIKELY DISPUTE, THE REGULAR TERMS AND CONDITIONS STANDARD WITH THE CANADIAN ABERDEEN ANGUS ASSOCIATION SHALL APPLY. IN ANY CASE, THE SELLER IS NOT RESPONSIBLE FOR MORE THAN THE PRICE THE BULL WAS DECLARED SOLD FOR ON SALE DAY.

**ACCIDENTS** - ANY PERSON ATTENDING THE SALE DOES SO AT THEIR OWN RISK AND RECOGNIZES THAT THERE ARE INHERENT DANGERS. ALTHOUGH EVERY PRECAUTION WILL BE TAKEN TO PROTECT THE SAFETY AND COMFORT OF BUYERS, NEITHER THE SALES MANAGER, AUCTIONEER NOR ANY OWNER ASSUMES ANY RESPONSIBILITY IN THIS MATTER AND DISCLAIMS ANY LIABILITY, LEGAL OR OTHERWISE, IN THE EVENT OF AN ACCIDENT OR LOSS OF PROPERTY.

**LIABILITY** - PURCHASERS MUST LOOK TO THE SELLER OF ANIMAL FOR FULFILLMENT OF ALL GUARANTEES AND REPRESENTATIONS MADE HEREUNDER. SOUTHERN ALBERTA LIVESTOCK EXCHANGE ARE ACTING AS AGENTS AND ASSUME NO RESPONSIBILITY FOR REPRESENTATIONS MADE BY THE SELLER.

**PHONE, MAIL OR SIGHT UNSEEN BIDS** - ALL BIDS WILL BE IN COMPLETE CONFIDENCE WITH SALES STAFF LISTED OR OWNERS.





66 RANCH LTD.

BOX 66

DUCHESS, AB T0J 0Z0



RETURN POSTAGE GUARANTEED  
PORT DE RETOUR GARANTI



*9th Annual*

# BULL SALE



*Herd run under  
strict range conditions*

[www.66RanchLtd.com](http://www.66RanchLtd.com)

1 PM THURSDAY  
**APRIL 23 2020**

Bow Slope Shipping Association, Brooks, Alberta