

# 66 RANCH • LTD. •

*7th  
Annual*

**\* NEW DATE \***

# BULL SALE

1 PM THURSDAY **APRIL 26** 2018

Southern Alberta Livestock Exchange  
Fort Macleod, Alberta

**130** Yearling Black Angus Bulls  
**61** Two Year Old Black Angus Bulls

Online Bidding at  
[DVAuction.com](http://DVAuction.com)

66 RANCH LTD.  
Kelsey Campbell  
403.362.0672

## 66 RANCH WELCOMES YOU TO OUR 7<sup>TH</sup> ANNUAL SPRING BULL SALE

It is our pleasure to welcome you to our 7th Annual Spring Bull Sale! We would like to thank our valued customers and friends for your support and trust in our program. And as well, thank you, to any of you new to our program for taking the time to assess our livestock.

The barebones of our program is Maternal! Every sire that we choose to use in our herd must pass a scrutinizing test of what the females will be like before we even start to consider all the other factors on the bull side of things. Like proper foot & leg structure, moderate birth weight and frame size without sacrificing the depth in body factor, easy fleshing, then to performance at weaning and yearling, and then focus on the E.P.D numbers lastly. We strongly believe a very good cow with a great foot and udder with a moderate frame size will last in our climates here in southern Alberta & Saskatchewan or the rough mountainous regions that some of our bulls are asked to perform in. And that a damn good cow will always raise a good calf. Our cows at 66 Ranch are under a microscope from day one. There is no tolerance at our place for bad feet or bad bags. We are constantly watching for flaws in our females, and proud to say we are having to get rather picky to find a reason to cull a cow. Well knowing, we will never be done with that job. I guess we call that progress!

Our bulls at 66 are also under great scrutiny. Right from branding season in the spring up until they become 2 year olds and are offered to you. If their not suppose to be a bull, we correct that. Our 2 year olds offered in our spring sale, are chosen from all the calves born from May 10th and after. When they get sorted in their pen at weaning, that pen is off limits for anything except culling. We believe that is the best way to run a 2 year old bull program and be able to offer you a strong set of 2 year old bulls. Our yearlings offered for our spring sale are born approximately from April 7th to April 30th. We will retain some complete sire groups from that time frame and as well the calves born between May 1st to May 10th to be sorted out and are destined for our fall bull sale.

All our bulls at 66 are grown carefully into working ranch bulls. We do not believe in pushing our bulls. Our yearling calves are fed from weaning until sale time a ration consisting of alfalfa hay, supplement, a few pounds of OATS and our choice of silage for the year. Our 2 year olds are brought in from pasture usually between Dec. 15th and Jan. 15th depending on the winter, and are fed a similar ration as the yearlings.

The 2 year old bulls are all semen tested and vet inspected and to go after the sale. Our yearling bulls being born just in April, we believe it is very hard on them to be asking for semen out of them at 10 or 11 months of age. So they will all be scrotal measured and vet inspected at sale time by our veterinarian. We will semen test them no later than May 15th and deliver them to you after that. If you choose to take them home sale day, we will discount the purchase price of \$100.00 per yearling as well as \$60.00 per yearling to cover the cost of semen evaluation. Also, any of you coming from the north country please don't drag a trailer down to haul a bull or two back from the Fort. We will get the bulls back to 66 Ranch and you can get them from there or we will get them out to you. All our bulls are sold guaranteed! If you're not happy, we aren't. If something isn't correct please tell us, the service in our business starts after the sale.

We really look forward to seeing all of you at our sale, or possibly before at the ranch where our bulls and cow herd can be viewed anytime.

If you are unable to attend the sale due to time, weather or distance you can follow our sale online at [www.dvauction.com](http://www.dvauction.com) or live bidding via the phone by contacting one of us at 66 Ranch or any of the capable S.A.L.E. staff on or before sale day. Remember to check out the videos of all the bulls in the sale on our website [www.66ranchltd.com](http://www.66ranchltd.com) prior to the sale.

We really appreciate all of you who can attend our sale. And like I mentioned in the beginning, we are very proud of the female side of our operation. So just like last year we want to share some of that with you. Every bull's lot number in this year's sale will be thrown into a hat and at the end of the sale a lot number will be pulled from the hat. The purchaser of that bull's lot number will be able to select at our ranch one yearling open heifer from a hand selected pen of 10 heifers to take home to put into your herd. Or if you decide that a 66 Ranch Black Angus heifer does not work for your operation a cheque for \$1000.00 will be made out to you.

Whether you purchase a bull at the sale or come to evaluate our cattle, or just come for the social outing. Please stay after the sale for an Amazing Angus Steak and a little "Country Hospitality"

Thanks

*Kelsey, Malissa, Brett and Carter*

**66**  
**RANCH**  
• LTD. •





7th Annual

# BULL SALE

THURSDAY, APRIL 26, 2018 at 1 PM  
Southern Alberta Livestock Exchange - Fort Macleod, Alberta

*Offering* • 61 Two Year Old Black Angus Bulls • 130 Yearling Black Angus Bulls

**VIEWING:** Bulls can be viewed anytime before the sale at the ranch. Bulls will be available for viewing at Southern Alberta Livestock Exchange on Friday, April 6.

**PURCHASER'S RISK:** Each animal becomes the risk of the purchaser as soon as sold. Insurance will be available sale day with Canadian Farm Insurance, Kolton Kasur 1-780-387-8376.

**DISCOUNT:** **\$100.00 discount** per yearling bull if taken home sale day. **\$60.00 discount** for all yearling bulls taken home sale day, to cover semen evaluation. *Yearling bulls can be sent back to our Ranch (bulls going back to feed yard must be insured or at owner's risk). Semen Evaluation on the yearling bulls will be completed and ready for pick up by May 15th, 2018. Bulls that are left beyond May 31, 2018 will be subject to a fee of \$3.00/hd/day.*

### TWO YEAR OLD BULLS TO GO RIGHT AFTER THE SALE!!!

We ask if any Two Year Old bulls that are hitching a ride back to our Ranch on our cattle wagon be picked up within 5 days after the sale PLEASE!! We understand very well how busy the first couple weeks of April can be. But 66 Ranch will not be held responsible for any injuries to the cattle after the said 5 day period. If for some reason these cattle cannot be picked up within 5 days we would much appreciate a call, and plan "B" can be made. Thanks for understanding.

**BREEDER'S GUARANTEE:** All 2 year old bulls will be semen tested and physically examined by our local vet and sold with a breeders guarantee.

**EVERY BULL at the sale will be sold with a 100% satisfaction guarantee.**

**SIGHT UNSEEN:** In the event you are unable to attend the sale or use the online option, bids can be given to sale staff or owners with satisfaction guaranteed.

### AUCTIONEER:

Frank Jenkins - 403-627-6700

### SALE STAFF:

Southern Alberta Livestock Exchange  
Allen Lively, Pincher Creek - 403-627-7776

Justin Keeley, Pincher Creek - 403-627-6534

Darren Shaw, Fort Macleod - 403-601-5165

### ACCOMMODATIONS:

Red Coat Inn, Fort Macleod - 403-553-4434

Days Inn, 100 3rd Ave. South, Lethbridge - 403-327-6000

## CAN'T MAKE IT ON SALE DAY?

*Our sale will be broadcast online @*

**DVAuction**  
www.dvauction.com

We are pleased that we will have the services of DV Auction. This will allow you to bid on the bulls via the internet. Of course, we would rather you attend the sale and our hospitality afterwards, but we well know today's world just keeps getting busier and busier! But, if for some reason you cannot attend, this gives you the opportunity to bid on the any animal in the live auction. Please remember to pre-register at [www.dvauction.com](http://www.dvauction.com) 24 hours prior to the sale.

We also have available with this service a live video of every animal in the sale. To view these videos just go to our website at [66ranchltd.com](http://66ranchltd.com) and click on 'view video'. Videos are also available at [dvauction.com](http://dvauction.com). We encourage you if possible to view the cattle at the ranch prior to the sale.

Please contact Kelsey @ 403-362-0672 or Malissa @ 403-501-9358 with any questions or issues with registering for the sale.

## 66 RANCH LTD.

Kelsey & Malissa Campbell

Box 66, Duchess, AB

T0J 0Z0

Kelsey - 403-362-0672

Malissa - 403-501-9358

email: [66@66ranchltd.com](mailto:66@66ranchltd.com)



Malissa & Kelsey, Carter & Brett

[www.66ranchltd.com](http://www.66ranchltd.com)

PLEASE JOIN US  
AFTER THE SALE FOR  
AN ANGUS STEAK AND  
A LITTLE "COUNTRY HOSPITALITY"

## - SALE DAY PHONES -

AUCTION MART 403-553-3315

KELSEY'S CELL 403-362-0672

MALISSA'S CELL 403-501-9358



**PLEASE NOTE:**

- No bulls have been sold prior to the sale
- Bulls are sold in catalogue order
- Updated weights & scrotal measurements will be available Sale day
- 66 Ranch reserve the right to draw 250 straws of semen at our expense and at your convenience on any bull selling in the sale. For in-herd use only.

**NEWELL VETERINARY CLINIC**

The two year old bulls offered for sale by 66 Ranch have all passed a breeding soundness examination and are classified as satisfactory potential breeders.

The yearling bulls offered for sale by 66 Ranch have passed a physical exam and have scrotal circumference measurements above the minimum requirement recommended by the Society of Theriogenology and the Western Canadian Association of Bovine Practitioners.

I further recommend that all the yearling bulls purchased at this sale be given a Breeding Soundness Evaluation by a licensed veterinarian at a future point in time. It is preferable to conduct this exam no earlier than 13 months of age to avoid immaturity issues that often affect younger bulls.

Sincerely,  
Kirby Finkbeiner, DVM

**PERFORMANCE DATA**

- AOD: Age of Dam
- BW: Actual Birth Weight
- 205D: Weaning weight in lbs. adjusted to 205 days
- 365D: Yearling weight in lbs. adjusted to 205 days

**EPD EXPLANATION**

- BW:** Birth weight, a prediction of a sire's ability to transmit birth weight to his progeny
- WW:** Weaning weight, predictor of a sire's ability to transmit weaning growth to his progeny
- YW:** Yearling weight, predictor of a sire's ability to transmit yearling growth to his progeny
- MILK:** A predictor of a sire's genetic merit for milk and mothering ability as expressed in his daughters

The 2017 Angus Average EPDs are as follows and are the numbers to compare the bulls in the catalogue to:

Average Black Angus EPDs for all calves born in 2017

EPDs	BW	WW	YW	MILK	TM	CE	MCE
	+2.3	+45	+79	+21	+43	+3.2	+6.9

**RECOMMENDED HEIFER BULLS**

There are probably more than the 66 recommended "Heifer Bulls" at our sale. But we feel confident that the bulls with the **bold print BW** in the catalogue will make for trouble free calving off your 1st calf heifers.

*Thank You!!*

**TO OUR 2017 CUSTOMERS**

- 2M2 Land & Cattle Company\*
- 9 Bar Ranch Co. Ltd.\*
- 90 Bar Ranch Ltd.\*
- Jordy Bartman
- C & L Beasley Cattle\*
- Jim Bateman\*
- Bildersheim Farms Inc.\*
- Gloria Blades\*
- Blocks Ranching Ltd\*
- Bogi Ranching\*
- Lyle and Cindy Burns\*
- Jack Bunny\*
- Campstool Cattle Co. Ltd.
- Carolside Ranching\*

- Tim Christianson\*
- Clark Creek Ranching Ltd.\*
- Circle E Grazing Association\*
- Ron & Donna Davis\*
- Diamond V Ranch\*
- Jason Dick\*
- Deschamps Ranching \*
- Bob Deschamps\*
- Dryfork Ranch Ltd.\*
- F-R Angus\*
- Franz Friesen\*
- Fullerton Ranch\*
- Granum Colony\*
- Marvin Grant

- Grassland Ranches Ltd.\*
- Jack Harbinson\*
- Haraga Ranches\*
- Hastings Coulee Ranch\*
- Albert Henrickson\*
- Hironaka Farms\*
- Craig & Cody Hogg\*
- Larry & Jordy Hudec
- Rick and Lee Irwin\*
- J4 Ranch\*
- Jenkins Lazy U Ranch\*
- Klassen Brothers\*
- Leo Lamotte
- Scott Lanz
- Colter Maloy
- Martin Cattle Co.\*
- Bernell Martin\*
- Fred McGlynn
- Norm and Tammy McNeil\*
- McNiven Cattle Company\*

- Blake Mulvey\*
- Murray Ranches\*
- Newell Grazing Association\*
- Peters Ranch\*
- Pinhorn Grazing Association\*
- Quarter Circle JN Ranch Ltd.\*
- Rafter T Cattle\*
- Reners Farms Ltd.
- Riverside Ranch\*
- Rommens Farms\*
- Troy Rutschmann\*
- Neil Schattle
- Lance Schelske\*
- Schock Ranching\*
- Sewall Bros.\*
- Scott Sewall\*
- Snake Lake Ranches Ltd.\*
- Speargrass Cattle Co. Ltd.\*
- Spear Point Cattle Company\*
- Spur Ranching\*

- Tateson Ranching\*
- Taylor Enterprises Inc.\*
- TNT Cattle Co. Ltd
- Tongue Creek Ranch\*
- Nevin Torkelson
- Ray Torkelson\*
- Utopia Ranch Ltd.\*
- Cornelius Wall\*
- Washada Ranch\*
- Weiss Ranching
- Billy & Jolene Wenbourne\*
- Wever Farms Ltd.\*
- Wildcat Cattle\*
- Wisdom Ranching Co.\*
- Gordon Wudrich\*
- Willard Yellowface
- Yu Cattle Company Inc.\*
- Richard Zeigler

\* Repeat customers

# TWO YEAR OLD BULLS



**REFERENCE  
SIRE**

## SOUTH FORK CONVERGENCE 217Y

CKM 217Y 1640413 MAY 01 2011

DEER RIVER CONVERGENCE 68R 1273347

G A R EVAS CONVERGENCE 3403 AMF  
WILLABAR COUNTESS 248F

DEER RIVER BLACKBIRD 161T 1396618

H A IMAGE MAKER 0415 AMF CAF NHF DDF  
DEER RIVER BLACKBIRD 95R

BW: 94 205D: 759 365D: 1138

EPDs	BW	WW	YW	MILK	TM	CE	MCE
	+5.5	+57	+89	+16	+45	-3	+5

Deep, thick, wide, square.

As some locals would say a real "meat wagon."

Going back on 217Y's sire side is a proven herd sire of ours that produces excellent females.



**Lot 1**

**LOT  
1**

## 66 CONVERGENCE 618D

MALE CKM 618D 1935873 MAY 23 2016

SOUTH FORK CONVERGENCE 217Y 1640413

DEER RIVER CONVERGENCE 68R  
DEER RIVER BLACKBIRD 161T

BAD LANDS BLACKLASS 335N 1172260

HIGH VALLEY 4C6 AMBUSH AMF CAF  
BAD LANDS BLACKLASS 808H

AOD	BW	205D	365D	EPDs	BW	WW	YW	MILK
15	83	673	1194		+2.4	+43	+73	+21



**Lot 2**

**LOT  
2**

## 66 CONVERGENCE 512D

MALE CKM 512D 1937181 MAY 08 2016

SOUTH FORK CONVERGENCE 217Y 1640413

DEER RIVER CONVERGENCE 68R  
DEER RIVER BLACKBIRD 161T

SOUTH FORK ELINE 286Z 1677346

H A R B WINDY 702 J H AMF CAF OHF NHF DDF  
DEER RIVER ELINE LASS 249W

AOD	BW	205D	365D	EPDs	BW	WW	YW	MILK
6	87	573	1027		+2.2	+39	+65	+17



Lot 3

LOT 3

## 66 CONVERGENCE 484D

MALE CKM 484D 1930395 MAY 05 2016

SOUTH FORK CONVERGENCE 217Y 1640413

DEER RIVER CONVERGENCE 68R  
DEER RIVER BLACKBIRD 161T

BAD LANDS HYALITE HEDY 4068P 1220102

HIGH VALLEY 4C6 AMBUSH AMF CAF  
BAD LANDS HYALITE HEDY 921J

AOD	BW	205D	365D	EPDs	BW	WW	YW	MILK
14	74	598	1052		+0.4	+36	+57	+18



Lot 5

LOT 5

## 66 CONVERGENCE 544D

MALE CKM 544D 1935840 MAY 12 2016

SOUTH FORK CONVERGENCE 217Y 1640413

DEER RIVER CONVERGENCE 68R  
DEER RIVER BLACKBIRD 161T

DEER RIVER MINA 98S 1351108

DEER RIVER RIGHT TIME 111P  
DEER RIVER MINA 144N

AOD	BW	205D	365D	EPDs	BW	WW	YW	MILK
12	93	607	1086		+2.9	+40	+64	+18

ALL TWO YEAR OLD BULLS  
HAVE BEEN SEMEN TESTED &  
BREEDING SOUNDNESS EVALUATED



Lot 4

LOT 4

## 66 CONVERGENCE 623D

MALE CKM 623D 1935877 MAY 25 2016

SOUTH FORK CONVERGENCE 217Y 1640413

DEER RIVER CONVERGENCE 68R  
DEER RIVER BLACKBIRD 161T

HD QUEEN 242Z 1769925

THREE TREES U0385 0T26 1440  
VVV QUEEN 208R

AOD	BW	205D	365D	EPDs	BW	WW	YW	MILK
6	94	664	1099		+5.1	+47	+68	+23



Lot 6

LOT 6

## 66 CONVERGENCE 641D

MALE CKM 641D 1935883 MAY 28 2016

SOUTH FORK CONVERGENCE 217Y 1640413

DEER RIVER CONVERGENCE 68R  
DEER RIVER BLACKBIRD 161T

DEER RIVER DUCHESS 154W 1500608

DEER RIVER TOUCHDOWN 311S NHF  
DEER RIVER DUCHESS 84S

AOD	BW	205D	365D	EPDs	BW	WW	YW	MILK
9	94	599	1024		+4.7	+42	+67	+17

LOT 7

## 66 CONVERGENCE 625D

MALE CKM 625D 1935880 MAY 25 2016

SOUTH FORK CONVERGENCE 217Y 1640413

DEER RIVER CONVERGENCE 68R  
DEER RIVER BLACKBIRD 161T

BAD LANDS LASSIE 5017R 1261697

BAD LANDS AMBUSH 1M  
BAD LANDS LASSIE 305N

AOD	BW	205D	365D	EPDs	BW	WW	YW	MILK
13	87	676	1125		+3.2	+43	+60	+20



Lot 8

LOT 8

**66 CONVERGENCE 611D**

MALE CKM 611D 1935868 MAY 23 2016

SOUTH FORK CONVERGENCE 217Y 1640413

DEER RIVER CONVERGENCE 68R  
DEER RIVER BLACKBIRD 161T

DEER RIVER BARBARA 51U 1467384

DEER RIVER COALITION 138S  
DEER RIVER BARBARA 157S

AOD	BW	205D	365D	EPDs	BW	WW	YW	MILK
10	86	591	1067		+3.0	+38	+58	+17



Lot 9

LOT 9

**66 CONVERGENCE 550D**

MALE CKM 550D 1935841 MAY 12 2016

SOUTH FORK CONVERGENCE 217Y 1640413

DEER RIVER CONVERGENCE 68R  
DEER RIVER BLACKBIRD 161T

BAD LANDS LASSIE 312N 1156263

BAD LANDS DAQUANTAE 26L  
BAD LANDS LASSIE 53K

AOD	BW	205D	365D	EPDs	BW	WW	YW	MILK
15	74	666	1058		+1.7	+37	+48	+19



Tattoo helpers



Lot 10

LOT 10

**66 CONVERGENCE 569D**

MALE CKM 569D 1935845 MAY 15 2016

SOUTH FORK CONVERGENCE 217Y 1640413

DEER RIVER CONVERGENCE 68R  
DEER RIVER BLACKBIRD 161T

BAD LANDS ERICA 22K 1040582

HBR ECLIPSE 7116  
BAD LANDS ERICA 641F

AOD	BW	205D	365D	EPDs	BW	WW	YW	MILK
18	94	619	1077		+4.6	+38	+58	+15



All hands on deck for branding

**VIEW THE BULLS**

We welcome you to view the bulls before the sale at the Ranch.

Bulls will be available for viewing at the Southern Alberta Livestock Exchange in Fort Macleod on Friday, April 6.



**1 son sells**

**REFERENCE  
SIRE**

**66 BOBCAT 98B**

CKM 98B 1819723 APRIL 12 2014

WK BOBCAT DDF 1655479

CONNELY RIGHT ANSWER 746 AMF CAF OHF NHF DDF  
WK MISS ANGUS 7127

SOUTH FORK BARBARA 29Z 1677112

BAD LANDS DAQUANTAE 26L  
BAD LANDS BARBARA 237M

BW: 69 205D: 667 365D: 1139

EPDs	BW	WW	YW	MILK	TM	CE	MCE
	-2.3	+38	+61	+24	+43	+15	+14

A walking bull we raised out of a proven sire for calving ease with excellent growth. Going back to Bobcat on the sire side you can expect the calving ease to use on heifers and as well the females out of Bobcat are extremely well uddered and very feminine. 91 calves registered in Canada by Bobcat. Bull calves average 73 lbs., heifers average 68 lbs.

**2 sons sell**

**REFERENCE  
SIRE**

**CONNELY THUNDER**

IMP 587R 1385922 AMF CAF OHF NHF DDF JANUARY 28 2005

BALDRIDGE KABOOM K243 KCF CAF 13987017

JAUER 353 TRAVELER 589 27  
PLEASANTA OF CONANGA 736

PARKA OF CONANGA 241 AMF CAC NHF 13948273

BON VIEW BANDO 598 AMF CAC DDF  
PARTINA OF CONANGA 6237

EPDs	BW	WW	YW	MILK	TM	CE	MCE
	-0.9	+42	+83	+24	+45	+9	+14

An A.I sire we are still really excited about. Thunder produces deep and thick attractive female. Real Angus looking cattle. Udders are near perfect. The bull calves sired by Thunder definitely have that "extra rib." Super long, deep sided cattle. He sure puts the hip on his calves and yet maintains that calving ease we are all looking for. Appears to be that all around perfect bull!



**Lot 12**

**LOT  
12**

**66 BOBCAT 533D**

MALE CKM 533D 1930438 MAY 11 2016

66 BOBCAT 98B 1819723

WK BOBCAT DDF  
SOUTH FORK BARBARA 29Z

66 BARBARA 408B 1806063

BAD LANDS FORTE 406X  
BAD LANDS BARBARA 1006Y

AOD	BW	205D	365D	EPDs	BW	WW	YW	MILK
4	<b>60</b>	627	1099		-2.5	+42	+69	+22



**Lot 11**

**LOT  
11**

**66 THUNDER 438D**

MALE CKM 438D 1930356 MAY 02 2016

CONNELY THUNDER AMF CAF OHF NHF DDF 1385922

BALDRIDGE KABOOM K243 KCF CAF  
PARKA OF CONANGA 241 AMF CAC NHF

BAD LANDS PRIDE 78X 1555694

LOOKOUT CANUCK 65U  
BAD LANDS PRIDE 4088P

AOD	BW	205D	365D	EPDs	BW	WW	YW	MILK
8	79	612	1100		+0.5	+38	+61	+18



**Lot 13**

**LOT  
13**

**66 BOBCAT 599D**

MALE CKM 599D 1930477 MAY 21 2016

66 BOBCAT 98B 1819723

WK BOBCAT DDF  
SOUTH FORK BARBARA 29Z

66 STETSON 18B 1805714

BAD LANDS FORTE 406X  
BAD LANDS STETSON 1133Y

AOD	BW	205D	365D	EPDs	BW	WW	YW	MILK
4	<b>66</b>	554	987		-2.5	+26	+43	+22



**CALVING EASE BULLS  
BW IN BOLD**



**REFERENCE  
SIRE**

**66 THUNDER 296B**

CKM 296B 1805957 APRIL 22 2014

CONNEALY THUNDER AMF CAF OHF NHF DDF 1385922

BALDRIDGE KABOOM K243 KCF CAF  
PARKA OF CONANGA 241 AMF CAC NHF

DEER RIVER BLACKBIRD 326U 1467553

DEER RIVER STOCKMAN 7R  
DEER RIVER BLACKBIRD 299R

BW: 88 205D: 642 365D: 1148

EPDs	BW	WW	YW	MILK	TM	CE	MCE
	+4.8	+43	+70	+22	+44	-4	+8

A walking bull we raised going back to Thunder on his sire side. Calving ease with great growth and the female side is very attractive. 296B is an incredibly long bull with great depth.

**3 sons sell**



**Lot 14**

**LOT  
14**

**66 THUNDER 590D**

MALE CKM 590D 1935847 MAY 19 2016

66 THUNDER 296B 1805957

CONNEALY THUNDER AMF CAF OHF NHF DDF  
DEER RIVER BLACKBIRD 326U

BAD LANDS PRIDE 5075R 1270060

R R DAQUANTAE 789E AMF CAF OHF NHF DDF  
BAD LANDS PRIDE 618F

AOD	BW	205D	365D	EPDs	BW	WW	YW	MILK
13	87	680	1147		+3.6	+42	+64	+17



**Lot 15**

**LOT  
15**

**66 THUNDER 619D**

MALE CKM 619D 1935875 MAY 24 2016

66 THUNDER 296B 1805957

CONNEALY THUNDER AMF CAF OHF NHF DDF  
DEER RIVER BLACKBIRD 326U

BAD LANDS LASSIE 1139Y 1615436

NLC FEATURE ATTRACTION 3W  
BAD LANDS LASSIE 313N

AOD	BW	205D	365D	EPDs	BW	WW	YW	MILK
7	97	564	980		+5.3	+30	+45	+20

NO BULLS  
HAVE BEEN SOLD  
PRIOR TO THE SALE

**LOOKING FOR LONGEVITY?**

A cow at 66 Ranch is under great scrutiny from her first calf and continuing on her entire life at our place. If they show any imperfections with feet, udder or disposition they are culled right there on the spot. Any cow 4 or 5 or 6 has been scrutinized pretty thoroughly. So with that being said, we are pretty proud to have 62 cows that raised bulls in the sale being 8 years old and older, all the way up to 18 years old.



**Lot 16**

**LOT  
16**

**66 THUNDER 655D**

MALE CKM 655D 1935890 JUNE 02 2016

66 THUNDER 296B 1805957

CONNEALY THUNDER AMF CAF OHF NHF DDF  
DEER RIVER BLACKBIRD 326U

BAD LANDS BONNIE 108X 1555746

LOOKOUT CANUCK 65U  
BAD LANDS BONNIE 4082P

AOD	BW	205D	365D	EPDs	BW	WW	YW	MILK
8	94	602	1092		+4.5	+39	+59	+18



**REFERENCE  
SIRE**

BAD LANDS ALLIANCE 14W 1502297

BAD LANDS GLENELLA 5041R 1270140

BW: 91 205D: 741 365D: 1215

**66 ALLIANCE 17Z**

CKM 17Z 1677098 MARCH 26 2012

KMK ALLIANCE 6595 I87 AMF CAF NHF DDF  
BAD LANDS COUNTESS 214M AMF

LEACHMAN RIGHT TIME DMF AMF  
BAD LANDS GLENELLA 247M

EPDs	BW	WW	YW	MILK	TM	CE	MCE
	+5.0	+79	+131	+19	+59	-3	+11

Plain and simple, 17Z has it all. Performance, ease of flesh, leg structure, super foot, free moving, maternal.

We feel we have lucked out and finally raised one that can compete with any A.I sire.

His heifer calves are extremely feminine and by far the top end of the pen.

Very moderate birth weights out of 260 calves, 86 lbs. avg. on the bull calves and 77 lbs. avg. on the heifer calves.

We find it much easier to have confidence in A.I. 'ing to a bull that you know exactly what his sire is and as well his dam.

Because they both came from our program.

YEARLING SONS: LOTS 137 - 144

**BULLS WILL BE SOLD  
IN CATALOG ORDER**

Updated weights & scrotal  
measurements available Sale Day



**LOT  
17**

**66 ALLIANCE 331D**

MALE CKM 331D 1930258 APRIL 26 2016

66 ALLIANCE 17Z 1677098

BAD LANDS ALLIANCE 14W  
BAD LANDS GLENELLA 5041R

66 MIDDLEBROOK 420A 1755596

BOYD RESUME 9008 AMF CAF NHF DDF  
DEER RIVER MIDDLEBROOK 484S

AOD	BW	205D	365D	EPDs	BW	WW	YW	MILK
5	70	594	1099		+1.2	+51	+86	+19

LOT  
18

### 66 ALLIANCE 518D

MALE CKM 518D 1930422 MAY 09 2016

66 ALLIANCE 17Z 1677098

BAD LANDS ALLIANCE 14W  
BAD LANDS GLENELLA 5041R

66 PRINCESS 429A 1755605

CONNELLY THUNDER AMF CAF OHF NHF DDF  
BAD LANDS PRINCESS 8041U

AOD	BW	205D	365D	EPDs	BW	WW	YW	MILK
5	91	679	1165		+3.6	+59	+98	+22



Lot 21

LOT  
19

### 66 ALLIANCE 9D

MALE CKM 9D 1929953 APRIL 06 2016

66 ALLIANCE 17Z 1677098

BAD LANDS ALLIANCE 14W  
BAD LANDS GLENELLA 5041R

66 MINA 42A 1738739

BAD LANDS DAQUANTAE 26L  
SOUTH FORK MINA 22X

AOD	BW	205D	365D	EPDs	BW	WW	YW	MILK
5	80	600	1165		+2.6	+54	+94	+18

LOT  
21

### 66 ALLIANCE 69D

MALE CKM 69D 1930005 APRIL 13 2016

66 ALLIANCE 17Z 1677098

BAD LANDS ALLIANCE 14W  
BAD LANDS GLENELLA 5041R

66 BLACKBIRD 404A 1760797

BAD LANDS FORTE 10Y  
DEER RIVER BLACKBIRD 177T

AOD	BW	205D	365D	EPDs	BW	WW	YW	MILK
5	79	659	1112		+2.0	+52	+81	+21

AOD: AGE OF DAM



Lot 20

LOT  
20

### 66 ALLIANCE 235D

MALE CKM 235D 1930171 APRIL 22 2016

66 ALLIANCE 17Z 1677098

BAD LANDS ALLIANCE 14W  
BAD LANDS GLENELLA 5041R

SOUTH FORK DUCHESS 16X 1591944

SHALOM WAIGROUP 519/94  
DEER RIVER DUCHESS 466P

AOD	BW	205D	365D	EPDs	BW	WW	YW	MILK
8	89	569	1143		+2.7	+45	+82	+15

LOT  
22

### 66 ALLIANCE 673D

MALE CKM 673D 1930523 JUNE 05 2016

66 ALLIANCE 17Z 1677098

BAD LANDS ALLIANCE 14W  
BAD LANDS GLENELLA 5041R

66 MINA 461A 1760851

BAD LANDS FORTE 16U  
DEER RIVER MINA 451W

AOD	BW	205D	365D	EPDs	BW	WW	YW	MILK
5	93	698	1152		+4.0	+57	+94	+19

## WE ASK . . .

That all Two Year Old Bulls  
be taken home right after  
the sale, or picked up  
within 5 days PLEASE!



**REFERENCE  
SIRE**

**BAD LANDS WORLDWIDE 99Y**

CDS 99Y 1656992 APRIL 18 2011

S A V WORLDWIDE 9088 1656009

WAIMATA E230 AMF CAF NHF OSF DDF  
S A V ABIGALE 5650 CAF

BAD LANDS COUNTESS 214M AMF 1120996

HIGH VALLEY 4C6 AMBUSH AMF CAF  
BAD LANDS COUNTESS 442D

BW: 80

EPDs	BW	WW	YW	MILK	TM	CE	MCE
	+4.7	+33	+57	+23	+40	-4	+6

Performance with a little bigger frame size. The dam to 99Y was the one and only Matriarch of the Sewall herd 214M. She raised numerous top producing cows in our herd and many herd sire bulls for Sewall's and us as well.

**3 sons sell**



Lot 23

LOT  
23

**66 WORLDWIDE 613D**

MALE CKM 613D 1953910 MAY 23 2016

BAD LANDS WORLDWIDE 99Y 1656992

S A V WORLDWIDE 9088  
BAD LANDS COUNTESS 214M AMF

DEER RIVER BARBARA 376W 1500751

DEER RIVER DEFENDER 352N  
DEER RIVER BARBARA 340R

AOD	BW	205D	365D	EPDs	BW	WW	YW	MILK
9	94	489	986		+3.7	+21	+47	+18

LOT  
24

**66 WORLDWIDE 602D**

MALE CKM 602D 1943731 MAY 21 2016

BAD LANDS WORLDWIDE 99Y 1656992

S A V WORLDWIDE 9088  
BAD LANDS COUNTESS 214M AMF

BAD LANDS ANNE 1065Y 1615310

BAD LANDS DAQUANTAE 26L  
BAD LANDS ANNE 69K

AOD	BW	205D	365D	EPDs	BW	WW	YW	MILK
7	102	673	1158		+6.4	+38	+62	+22



Lot 25

LOT  
25

**66 WORLDWIDE 669D**

MALE CKM 669D 1931022 JUNE 04 2016

BAD LANDS WORLDWIDE 99Y 1656992

S A V WORLDWIDE 9088  
BAD LANDS COUNTESS 214M AMF

DEER RIVER MINA 125W CAF 1500587

S A V 5175 BANDO 4597 AMF CAC OHF NHF DDF  
DEER RIVER MINA 511S

AOD	BW	205D	365D	EPDs	BW	WW	YW	MILK
9	98	667	1118		+3.8	+37	+57	+29

**VIDEO OF ALL THE SALE BULLS**

Available on our website [www.66RanchLtd.com](http://www.66RanchLtd.com) & at [www.DVAuction.com](http://www.DVAuction.com)

**REFERENCE  
SIRE**

**SHEIDAGHAN PIONEER 56A**

VMF 56A 1728426 FEBRUARY 10 2013

S A V PIONEER 7301 AMF CAF OHF NHF DDF 1481377

S A V FINAL ANSWER 0035 AMF CAF OHF NHF DDF  
S A V BLACKBIRD 5297 CAC

GERLEI MAY 33W 1510875

MERIT SUGAR RAY 7051  
GERLEI MAY 66T

BW: 95 205D: 722

EPDs	BW	WW	YW	MILK	TM	CE	MCE
	+4.6	+50	+105	+25	+50	-2	+4

A walking bull we purchased from Sheidaghan Angus. Going back to Final Answer on the sire's side, will give the calving ease and attractive females we are all looking for.

**1 son sells**

LOT  
26

**66 PIONEER 6117D**

MALE CKM 6117D 1930494 MAY 25 2016

SHEIDAGHAN PIONEER 56A 1728426

S A V PIONEER 7301 AMF CAF OHF NHF DDF  
GERLEI MAY 33W

66 BARBARA 251A 1738900

LOOKOUT CANUCK 65U  
DEER RIVER BARBARA 376W

AOD	BW	205D	365D	EPDs	BW	WW	YW	MILK
5	86	627	1110		+3.5	+41	+77	+17



**1 son sells**

**REFERENCE  
SIRE**

**66 THUNDER 308A**

CKM 308A 1738941 APRIL 27 2013

CONNEALY THUNDER AMF CAF OHF NHF DDF 1385922

BALDRIDGE KABOOM K243 KCF CAF  
PARKA OF CONANGA 241 AMF CAC NHF

BAD LANDS BONNIE 7007T 1387765

KMK ALLIANCE 6595 I87 AMF CAF OHF NHF DDF  
SILVER DOME BONNIE 814M

BW: 69 205D: 669 365D: 1197

EPDs	BW	WW	YW	MILK	TM	CE	MCE
	-2.0	+44	+85	+21	+43	+12	+14

A walking bull raised at 66, a sure fire heifer bull. Very attractive progeny from 308A, with some powerful performance to boot too!

**1 son sells**

**REFERENCE  
SIRE**

**VISION UNANIMOUS 1418**

IMP 1418Y 1701532 AMF CAF NHF DDF JANUARY 22 2011

VISIONTOPLINE ROYAL STOCKMAN DDF 16368389

GAMBLES ROYAL FLUSH AMF  
LAGRAND PRIDE 7140

VISION EDELLA 665 CAF DDF 15526060

BOYD ON TARGET 1083 AMF CAF OHF NHF DDF  
VISION EDELLA 337

EPDs	BW	WW	YW	MILK	TM	CE	MCE
	+3.3	+74	+127	+15	+52	+2	+3

An A.I. sire we used with explosive performance. From a very moderate and breed avg. B.W. EPD of +3.3 to a W.W. +74 to a Y.W. +127. His sons in the sale sure look to have the performance he is known for. Another breeder has claimed "The feet on Unanimous are impeccable, the best we have ever seen. A definite foot improver for the Angus breed."



**Lot 28**

**LOT  
28**

**66 THUNDER 123D**

MALE CKM 123D 1930060 APRIL 17 2016

66 THUNDER 308A 1738941

CONNEALY THUNDER AMF CAF OHF NHF DDF  
BAD LANDS BONNIE 7007T

66 BLACKCAP 544B 1806139

LOOKOUT CANUCK 65U  
BAD LANDS BLACKCAP 1142Y

AOD	BW	205D	365D	EPDs	BW	WW	YW	MILK
9	78	608	1125		+1.1	+47	+81	+15

AOD	BW	205D	365D	EPDs	BW	WW	YW	MILK
4	<b>76</b>	641	1058		+0.5	+44	+70	+17

**LOT 27**

**66 UNANIMOUS 320D**  
MALE CKM 320D 1930245 APRIL 25 2016

VISION UNANIMOUS 1418 AMF CAF NHF DDF 1701532  
VISIONTOPLINE ROYAL STOCKMAN DDF  
VISION EDELLA 665 CAF DDF

BAD LANDS BARBARA 9079W 1502459  
B/R NEW FRONTIER 095 AMF CAF OHF NHF DDF  
BAD LANDS BARBARA 309N

AOD	BW	205D	365D	EPDs	BW	WW	YW	MILK
9	78	608	1125		+1.1	+47	+81	+15



SOUTH FORK CONVERGENCE 217Y

CONNEALY THUNDER

66 BOBCAT 98B

66 THUNDER 296B

66 ALLIANCE 17Z

BAD LANDS WORLDWIDE 99Y

SHEIDAGHAN PIONEER 56A

VISION UNANIMOUS 1418

66 THUNDER 308A

66 ALLIANCE 222B

HILLTOP TRUE GRIT 9202

STUART CHISM 82A

**SIRES REPRESENTED**

IN THIS CATALOG

BAD LANDS ATTRACTION 109Y

DELAR MOTIVATED 37A

F-R MECHANIC 3025

66 THUNDER 90B

V D A R CEDAR WIND 8111

COLE CREEK 1100 BLACK 1144

66 BRAND NAME 66B

COLE CREEK BLACK CEDAR 46P

OCC MISSING LINK 830M

CONNEALY STINGRAY 9618

APEX WINDY 078

COLE CREEK BLACK SEAL 64

SOUTH FORK 26L DAQUANTAE 87Z

SHIPWHEEL CHINOOK

F-R MECHANIC 4086

CONNEALY COURAGE 25L

SANKEYS JUSTIFIED 101

CONNEALY CONSENSUS 7229

COLE CREEK BLACK CEDAR 1100

SOO LINE MOTIVE 9016

COLE CREEK CEDAR RIDGE 181

BRUNS THUNDERBOLT 963

S A V RESOURCE 1441

FF BLACK GOLD JF C19

BADLANDS ALLIANCE 44T

EF COMMANDO 1366

COLE CREEK SEVEN SON 1394

66 ALLIANCE 437C

**REFERENCE  
SIRE**

## 66 ALLIANCE 222B

CKM 222B 1805880 APRIL 18 2014

66 ALLIANCE 17Z 1677098

BAD LANDS ALLIANCE 14W  
BAD LANDS GLENELLA 5041R

BAD LANDS PRINCESS 8041U 1429114

BAD LANDS QUANTUM 030K  
BAD LANDS PRINCESS 63K

BW: 93 205D: 745 365D: 1313

EPDs	BW	WW	YW	MILK	TM	CE	MCE
	+3.6	+54	+91	+23	+50	+0	+10

A walking bull we raised sired by 17Z. 222B has incredible length, depth, width and a supper foot. His dam is a great cow going back to Quantum 3330 and Alliance on the sire side is going to give you a powerful set of females.

**1 son sells**

**BUY A BULL  
& YOU COULD  
WIN A HEIFER!**

Details in the 66 Ranch  
Welcome Letter



**Lot 29**

**LOT  
29**

## 66 ALLIANCE 679D

MALE CKM 679D 1930530 JUNE 09 2016

66 ALLIANCE 222B 1805880

66 ALLIANCE 17Z  
BAD LANDS PRINCESS 8041U

SOUTH FORK DUCHESS 360Z 1677388

A A R REALLY WINDY 1205 AMF CAF OHF NHF DDF  
DEER RIVER DUCHESS 154W

AOD	BW	205D	365D	EPDs	BW	WW	YW	MILK
6	96	690	1190		+4.2	+53	+91	+21



**1 son sells**

**REFERENCE  
SIRE**

## HILLTOP TRUE GRIT 9202

IMP 9202W 1934390 JANUARY 29 2009

SITA ALLIANCE 7544 US14658781

SITZ ALLIANCE 6595 AMF CAF OHF NHF DDF  
SITZ PRIDE 2561

HILLTOP CANDY LASS 713 US15924051

ER BUSHWACKER 06P1  
HILLTOP CANY LASS T9

EPDs	BW	WW	YW	MILK	TM	CE	MCE
	-0.5	+57	+95	+21	+50	+15	+7

A new A.I. sire we are really excited about. The bull was recommended to us from our good friends at Universal Semen Sales in Great Falls. From a couple past references they gave us on bulls, explaining how we would absolutely love the females, we sure have! They had told us that the True Grit female side is absolutely outstanding, so we were sold quickly on giving him a try. A low birth weight sire with tremendous growth. After A.I.ing 30+ heifers to True Grit we have confidence he can be used safely on heifers. Looking like another all around kind of bull.



**Lot 30**

**LOT  
30**

## 66 TRUE GRIT 385D

MALE CKM 385D 1936972 APRIL 29 2016

HILLTOP TRUE GRIT 9202 1934390

SITZ ALLIANCE 7544  
HILLTOP CANDY LASS 713

66 LASSIE 161B 1805825

CONNELLY THUNDER AMF CAF OHF NHF DDF  
BAD LANDS LASSIE 6040S

AOD	BW	205D	365D	EPDs	BW	WW	YW	MILK
4	81	760	1169		+0.9	+62	+98	+23





**REFERENCE  
SIRE**

**STUART CHISM 82A**

EDAM 82A 1736988 FEBRUARY 27 2013

S CHISUM 6175 AMF CAF OHF NHF DDF 1539796

S ALLIANCE 3313 AMF  
S GLORIA 464

STUART MISS ROSE 22U 1454180

DMM AMBUSH 03M  
STUART MISS ROSE 12M

BW: 86

EPDs	BW	WW	YW	MILK	TM	CE	MCE
	+2.9	+69	+113	+21	+56	+5	+12

A walking bull we purchased from Stuart Cattle Station, spring of 2014.

82A is as deep as you will find but yet the calving ease that all ranchers are looking for.

82A may be one of the most docile bulls we have found.

The female side of things is even more exciting.

We went to Stuart Ranch before purchasing 82A and seen both the dam and grandam.

The grandam was 12 at that time and after seeing both of them we were determined to own the bull!

YEARLING SONS: LOTS 62 - 81



**LOT  
31**

**66 CHISM 126D**

MALE CKM 126D 1930063 APRIL 17 2016

STUART CHISM 82A 1736988

S CHISUM 6175 AMF CAF OHF NHF DDF  
STUART MISS ROSE 22U

DEER RIVER IDELETTE 531S 1351376

DEER RIVER 241J BLACK INK 331L  
DEER RIVER IDELETTE 30K

AOD	BW	205D	365D	EPDs	BW	WW	YW	MILK
12	<b>75</b>	580	1014		-0.9	+36	+54	+15



**LOT  
32**

**66 CHISM 441D**

MALE CKM 441D 1930358 MAY 02 2016

STUART CHISM 82A 1736988

S CHISUM 6175 AMF CAF OHF NHF DDF  
STUART MISS ROSE 22U

BAD LANDS COUNTLESS 80X 1555696

LEACHMAN RIGHT TIME DMF AMF  
BAD LANDS COUNTLESS 214M AMF

AOD	BW	205D	365D	EPDs	BW	WW	YW	MILK
8	85	666	1058		+1.8	+50	+73	+22



**Lot 33**

**LOT  
33**

**66 CHISM 111D**

MALE CKM 111D 1930047 APRIL 16 2016

STUART CHISM 82A 1736988

S CHISUM 6175 AMF CAF OHF NHF DDF  
STUART MISS ROSE 22U

BAD LANDS LASSIE 302N 1156290

BAD LANDS DAQUANTAE 26L  
BAD LANDS LASSIE 23K

AOD	BW	205D	365D	EPDs	BW	WW	YW	MILK
15	94	583	1111		+4.1	+43	+74	+17

**PERFORMANCE DATA**

AOD: Age of Dam

BW: Actual Birth Weight

205D: Weaning Weight in lbs. adjusted to 205 days

365D: Yearling Weight in lbs. adjusted to 365 days

**EPD AVERAGES**

Average Black Angus EPDs for all calves born in 2017

EPDs	BW	WW	YW	MILK
	+2.3	+45	+79	+21



**Lot 34**

**LOT  
34**

**66 CHISM 495D**

MALE CKM 495D 1930405 MAY 06 2016

STUART CHISM 82A 1736988

S CHISUM 6175 AMF CAF OHF NHF DDF  
STUART MISS ROSE 22U

BADLANDS PRIDE 15K 1040579

HBR ECLIPSE 7116  
BAD LANDS PRIDE 815H

AOD	BW	205D	365D	EPDs	BW	WW	YW	MILK
18	80	648	1109		+1.6	+47	+71	+18



**Lot 35**

**LOT  
35**

**66 CHISM 483D**

MALE CKM 483D 1930394 MAY 05 2016

STUART CHISM 82A 1736988

S CHISUM 6175 AMF CAF OHF NHF DDF  
STUART MISS ROSE 22U

DEER RIVER DUCHESS 189W 1521692

DEER RIVER HUNTER 461T  
DEER RIVER DUCHESS 248T

AOD	BW	205D	365D	EPDs	BW	WW	YW	MILK
9	76	551	998		+0.8	+37	+61	+18







4 sons sell

**REFERENCE  
SIRE**

**BAD LANDS ATTRACTION 109Y**

CDS 109Y 1615419 APRIL 24 2011

NLC FEATURE ATTRACTION 3W 1534131

DUFF NEW ATTRACTION 6110 CAF DDF  
DOUBLE AA BELLA 31'05

BAD LANDS BLACKCLASS 88K 1019199

BAD LANDS RIGHT TIME 62E  
ALBERN BLACKCLASS 39'87

BW: 56 205D: 656 365D: 1132

EPDs	BW	WW	YW	MILK	TM	CE	MCE
	+1.6	+29	+48	+15	+30	+4	+10

Easy keeping 12 months a year, great feet and extreme docility. His cattle really have that good "Angus look" to them.



Lot 37

**LOT  
37**

**66 ATTRACTION 624D**

MALE CKM 624D 1935878 MAY 25 2016

BAD LANDS ATTRACTION 109Y 1615419

NLC FEATURE ATTRACTION 3W  
BAD LANDS BLACKCLASS 88K

SOUTH FORK COUNTESS 118Z 1677193

BAD LANDS ALLIANCE 14W  
BAD LANDS COUNTESS 6096S

AOD	BW	205D	365D	EPDs	BW	WW	YW	MILK
6	88	591	1069		+3.0	+36	+57	+13

CALVING EASE BULLS: BW IN **BOLD**



Lot 36

**LOT  
36**

**66 ATTRACTION 581D**

MALE CKM 581D 1930467 MAY 17 2016

BAD LANDS ATTRACTION 109Y 1615419

NLC FEATURE ATTRACTION 3W  
BAD LANDS BLACKCLASS 88K

66 LADY FANNY 277A 1738921

CONNELLY IMPRINT 8317 AMF CAF NHF  
BAD LANDS LADY FANNY 7078T

AOD	BW	205D	365D	EPDs	BW	WW	YW	MILK
5	84	658	1085		+2.7	+43	+68	+16



Lot 38

**LOT  
38**

**66 ATTRACTION 539D**

MALE CKM 539D 1930441 MAY 11 2016

BAD LANDS ATTRACTION 109Y 1615419

NLC FEATURE ATTRACTION 3W  
BAD LANDS BLACKCLASS 88K

SOUTH FORK B B BLOSSOM 45Z 1677121

BAD LANDS ALLIANCE 14W  
BAD LANDS BB BLOSSOM 4067P

AOD	BW	205D	365D	EPDs	BW	WW	YW	MILK
6	<b>72</b>	549	1063		+0.2	+33	+58	+12

**BULL MANAGEMENT**

We do not believe in pushing our 2 year old bulls or yearlings.

They are all carefully grown into herd sires.

**LOT  
39**

**66 ATTRACTION 600D**

MALE CKM 600D 1930478 MAY 21 2016

BAD LANDS ATTRACTION 109Y 1615419

NLC FEATURE ATTRACTION 3W  
BAD LANDS BLACKCLASS 88K

66 BLACKBIRD 234A 1738885

HIGH VALLEY 4C6 AMBUSH AMF CAF  
DEER RIVER BLACKBIRD 19N

AOD	BW	205D	365D	EPDs	BW	WW	YW	MILK
5	91	520	1075		+3.6	+27	+55	+15



Lot 40

LOT 40

**66 MOTIVATED 607D**

MALE CKM 607D 1930483 MAY 22 2016

DELAR MOTIVATED 37A 1719237

SOO LINE MOTIVE 9016  
MEADOW RIDGE MAY 38T

66 ZARA 387A 1739012

BOYD RESUME 9008 AMF CAF NHF DDF  
DEER RIVER ZARA 651U

AOD	BW	205D	365D	EPDs	BW	WW	YW	MILK
5	82	631	1084		+0.6	+35	+59	+23

REFERENCE SIRE

**DELAR MOTIVATED 37A**

LNS 37A 1719237 ET JANUARY 14 2013

SOO LINE MOTIVE 9016 1504907

HF KODIAK 5R AMF CAF OHF NHF MAF DDF  
TLA BEAUTY 5R

MEADOW RIDGE MAY 38T 1407345

S A V 004 DENSITY 4336 AMF CAF OHF NHF DDF  
MEADOW RIDGE JENNY 878

BW: 70 205D: 627

EPDs	BW	WW	YW	MILK	TM	CE	MCE
	-1.1	+33	+62	+25	+42	+10	+3

A walking bull purchased from Larry Sushelnitski. A Motive 9016 son from a Density cow. Super uddered and very easy fleshing dam. 37A will give you calving ease and extra growth on the progeny once they are outside of the cow. Super haired cattle as well.

1 son sells

REFERENCE SIRE

**66 THUNDER 90B**

CKM 90B 1805761 APRIL 11 2014

CONNELLY THUNDER AMF CAF OHF NHF DDF 1385922

BALDRIDGE KABOOM K243 KCF CAF  
PARKA OF CONANGA 241 AMF CAC NHF

BAD LANDS BLACK LASS 62X 1555673

BAD LANDS FORTE 5S  
BAD LANDS BLACK LASS 5038R

BW: 77 205D: 644 365D: 1224

EPDs	BW	WW	YW	MILK	TM	CE	MCE
	-1.0	+36	+66	+23	+41	+11	+14

A walking bull raised by us going back to "Thunder" on the sire side. A calving ease bull with great performance. Very attractive bull with great curves. His dam is possibly one of our most favorite cows at the ranch. Cattlemen keep the females!

2 sons sell

REFERENCE SIRE

**F-R MECHANIC 3025**

MALE DMC 3025A 1772469 APRIL 07 2013

WJ MECHANIC 9298W 1529581

CROWFOOT MECHANIC 5789R  
CROWFOOT G V LASS 6686S

F-R 220 LASS 0058 1599639

F-R 1176 LAD 220  
F-R TOTAL LASS 8014

BW: 77 205D: 556

EPDs	BW	WW	YW	MILK	TM	CE	MCE
	-0.5	+15	+31	+20	+28	+7	+10

A walking bull we purchased from Fraser's. A proven heifer bull, with extra ease of flesh year round. Very attractive head on 3025A, very "Angus." The females sired by 3025A are good enough to make any cattleman drool!

1 son sells

LOT 42

**66 THUNDER 313D**

MALE CKM 313D 1948229 APRIL 25 2016

66 THUNDER 90B 1805761

CONNELLY THUNDER AMF CAF OHF NHF DDF  
BAD LANDS BLACK LASS 62X

66 BLACKBIRD 74A 1738765

NLC FEATURE ATTRACTION 3W  
DEER RIVER BLACKBIRD 40S

AOD	BW	205D	365D	EPDs	BW	WW	YW	MILK
5	79	570	1069		+1.2	+35	+60	+19



Lot 41

LOT 41

**66 MECHANIC 519D**

MALE CKM 519D 1930423 MAY 09 2016

F-R MECHANIC 3025 1772469

WJ MECHANIC 9298W  
F-R 220 LASS 0058

66 LASSIE 227B 1805886

CONNELLY THUNDER AMF CAF OHF NHF DDF  
BAD LANDS LASSIE 59X

AOD	BW	205D	365D	EPDs	BW	WW	YW	MILK
4	72	596	930		+0.0	+26	+42	+23



Lot 43

LOT 43

**66 THUNDER 594D**

MALE CKM 594D 1948224 MAY 20 2016

66 THUNDER 90B 1805761

CONNELLY THUNDER AMF CAF OHF NHF DDF  
BAD LANDS BLACK LASS 62X

66 ROSEBUD 436A 1760926

SOUTH FORK CONVERGENCE 217Y  
SOUTH FORK ROSEBUD 92X

AOD	BW	205D	365D	EPDs	BW	WW	YW	MILK
5	86	573	1002		+2.6	+34	+56	+17



2 sons sell

**REFERENCE  
SIRE**

**V D A R CEDAR WIND 8111**

IMP 8111Y 1751551 JANUARY 06 2011

COLE CREEK CEDAR RIDGE 1V DMF DWF AMF CAF NHF DDF 1659099

COLE CREEK BLACK CEDAR 46P  
COLE CREEK CLOVANADA 49S

V D A R CHLOE 9727 16434284

V D A R REALLY WINDY 4097 AMF CAF NHF DDF  
V D A R CHLOE 6320

EPDs	BW	WW	YW	MILK	TM	CE	MCE
	-1.1	+50	+84	+27	+52	+11	+10

An A.I. heifer bull we used from Cole Creek bloodlines. Extreme docility with a very moderate birth weight and has excellent performance. We ourselves are very pleased with the growth of these cattle after they were weaned. Competing very well with all the other performance sires. Once again, going back to Cedar Ridge these cattle are displaying that natural ease of flesh. The real "cow mans" kind of cattle! Last spring we had numerous Cedar Wind heifers calving, every heifer that calved had a perfect udder. Not often you can say that with purchased semen from a catalogue.

YEARLING SONS: LOTS 87 - 115



66 Ranch Cedar Wind Heifer



Lot 44

LOT  
44

**66 CEDAR WIND 265D**

MALE CKM 265D 1930200 APRIL 23 2016

V D A R CEDAR WIND 8111 1751551

COLE CREEK CEDAR RIDGE 1V DMF DWF AMF CAF NHF DDF  
V D A R CHLOE 9727

BAD LANDS PRINCESS 1143Y 1615444

NLC FEATURE ATTRACTION 3W  
BAD LANDS PRINCESS 63K

AOD	BW	205D	365D	EPDs	BW	WW	YW	MILK
7	86	627	1186		+2.4	+48	+80	+21



Lot 45

LOT  
45

**66 CEDAR WIND 413D**

MALE CKM 413D 1930335 APRIL 30 2016

V D A R CEDAR WIND 8111 1751551

COLE CREEK CEDAR RIDGE 1V DMF DWF AMF CAF NHF DDF  
V D A R CHLOE 9727

66 LASSIE 26B 1814494

KBJ ROGUE II 203H  
BAD LANDS ERICA 10K

AOD	BW	205D	365D	EPDs	BW	WW	YW	MILK
4	78	552	986		+0.6	+33	+61	+20



**REFERENCE  
SIRE**

# COLE CREEK 1100 BLACK 1144

IMP 1144B 1844685 MARCH 07 2014

COLE CREEK BLACK CEDAR 1100 1998932

COLE CREEK BLACK CEDAR 46P AMF CAF NHF DDF  
COLE CREEK JUANADA BIRD 38N

COLE CREEK JUANADA SHE 48T 15483010

COLE CREEK GOLDMERE 31N  
COLE CREEK JUANADA RITA 044

EPDs	BW	WW	YW	MILK	TM	CE	MCE
	+5.1	+32	+57	+25	+41	-5	-1

A walking bull at the ranch purchased from Cole Creek Angus from Billings, Montana area. We have talked before about the incredible females at Cole Creek, but maybe hadn't mentioned their cows are expected to work for them in very tough semi-mountains/ hard brown grass country. Cole Creek cattle have ease of flesh bred into them and 1144B definitely is easy fleshing. And once again out of a near perfect dam.

**2 sons sell**



**Lot 46**

**LOT  
46**

## 66 1144 BLACK 610D

MALE CKM 610D 1930487 MAY 23 2016

COLE CREEK 1100 BLACK 1144 1844685

COLE CREEK BLACK CEDAR 1100  
COLE CREEK JUANADA SHE 48T

66 ROSEBUD 539A 1755667

SOUTH FORK CONVERGENCE 255Y  
SOUTH FORK ROSEBUD 13Y

AOD	BW	205D	365D	EPDs	BW	WW	YW	MILK
5	102	703	1191		+7.6	+48	+78	+23



**Lot 47**

**LOT  
47**

## 66 1144 BLACK 189D

MALE CKM 189D 1930125 APRIL 20 2016

COLE CREEK 1100 BLACK 1144 1844685

COLE CREEK BLACK CEDAR 1100  
COLE CREEK JUANADA SHE 48T

66 ROSETTE 64A 1750268

APEX WINDY 078 AMF CAF OHF NHF OSF DDF  
DEER RIVER ROSETTE 695U

AOD	BW	205D	365D	EPDs	BW	WW	YW	MILK
5	88	598	1033		+4.2	+35	+57	+24



**Lot 48**

**LOT  
48**

## 66 BRAND NAME 628D

MALE CKM 628D 1935881 MAY 26 2016

66 BRAND NAME 66B 1805745

S A V BRAND NAME 9115 AMF CAF OHF NHF DDF  
BAD LANDS LASSIE 7019T

BAD LANDS GERTIE 1146Y 1615451

BAD LANDS ALLIANCE 44T  
BAD LANDS GERTIE 9112W

AOD	BW	205D	365D	EPDs	BW	WW	YW	MILK
7	93	627	1048		+3.5	+45	+60	+19

**REFERENCE  
SIRE**

# 66 BRAND NAME 66B

CKM 66B 1805745 APRIL 10 2014

S A V BRAND NAME 9115 AMF CAF OHF NHF DDF 1600096

S A V BISMARCK 5682 AMF CAF OHF NHF DDF  
S A V BLACKCAP MAY 5530 CAF

BAD LANDS LASSIE 7019T 1387785

KMK ALLIANCE 6595 187 AMF CAF OHF NHF DDF  
BAD LANDS LASSIE 53K

BW: 83 205D: 713 365D: 1216

EPDs	BW	WW	YW	MILK	TM	CE	MCE
	+3.1	+55	+83	+20	+48	+0	+6

A walking bull raised by 66 Ranch sired by Brand Name. Extra, extra length, deep sided, very docile and the few females sired by Brand Name are keepers. Sadly, we lost 66B last season.

**1 son sells**



3 sons sell

REFERENCE  
SIRE

## COLE CREEK BLACK CEDAR 46P

IMP 46N 1605479 FEBRUARY 16 2003

C H QUANTUM 6247 12687606

C H QUANTUM 3330  
C H BLACKBIRD 0136

COLE CREEK CLOVA JUANADA 67 12872634

A A R WINDY RIDGE 523  
COLE CREEK CLOVA JUANADA 811

EPDs	BW	WW	YW	MILK	TM	CE	MCE
	+2.2	+46	+82	+20	+43	+2	+6

Maternal, Maternal, Maternal! 46P was raised by Cole Creek Angus in Billings Montana. We toured their cow herd last year again. Possibly one of the best herds we have been in. Not a bad foot or udder to be found. We seen a large number of 46P sired cows that were 13 years old at the time, that being the reason we sourced 46P semen to use in our herd. Along with the super strong maternal side, 46P has sired some dandy bull calves. Real easy fleshing, deep sided cattle.

YEARLING SONS: LOTS 49 - 51



Lot 49

LOT  
49

## 66 BLACK CEDAR 457D

MALE CKM 457D 1930372 MAY 03 2016

COLE CREEK BLACK CEDAR 46P AMF CAF NHF DDF 1605479

C H QUANTUM 6247  
COLE CREEK CLOVA JUANADA 67

DEER RIVER ROSEBUD 479W 1542478

DEER RIVER KINCAID 204T  
DEER RIVER ROSEBUD 413S

AOD	BW	205D	365D	EPDs	BW	WW	YW	MILK
9	95	637	1078		+3.6	+39	+63	+18

CATALOG & VIDEO ONLINE

at [www.66ranchltd.com](http://www.66ranchltd.com) & [www.dvauction.com](http://www.dvauction.com)

LOT  
50

## 66 BLACK CEDAR 132D

MALE CKM 132D 1930068 APRIL 17 2016

COLE CREEK BLACK CEDAR 46P AMF CAF NHF DDF 1605479

C H QUANTUM 6247  
COLE CREEK CLOVA JUANADA 67

BAD LANDS BLACKCAP 9005W 1502300

H A IMAGE MAKER 0415 AMF CAF NHF DDF  
BAD LANDS BLACKCAP 121L

AOD	BW	205D	365D	EPDs	BW	WW	YW	MILK
9	88	693	1164		+1.6	+47	+78	+26



Lot 51

LOT  
51

## 66 BLACK CEDAR 422D

MALE CKM 422D 1930349 MAY 01 2016

COLE CREEK BLACK CEDAR 46P AMF CAF NHF DDF 1605479

C H QUANTUM 6247  
COLE CREEK CLOVA JUANADA 67

BAD LANDS HEDY 1021Y 1615249

BAD LANDS IMAGE MAKER 65W  
BAD LANDS HEDY 7041T

AOD	BW	205D	365D	EPDs	BW	WW	YW	MILK
7	90	654	1117		+1.4	+39	+65	+23

**DVAuction**  
[www.dvauction.com](http://www.dvauction.com)

Watch & Bid online for FREE!

Can't make the sale?  
*Let DVAuction bring the sale to you!*  
Busy during the sale?  
*Let DVAuction represent your bid!*

Visit [www.dvauction.com](http://www.dvauction.com) and Register!

It's as easy as 1, 2, 3...

1. Create an account at [www.dvauction.com](http://www.dvauction.com) under the "create new account" tab
2. Apply for bidding by clicking "apply for bidding" in the upper left corner of your screen, at least 24 hours prior to the auction
3. Tune into the sale and make your purchases!

For General Questions Please Contact Our Office:  
(402) 316-5460 or [support@dvauction.com](mailto:support@dvauction.com)

\*High Speed Internet Access Required



2 sons sell

**REFERENCE  
SIRE**

**O C C MISSING LINK 830M**

IMP 830M 1655506 SEPTEMBER 16 2002

O C C HEADLINER 661H 13235201

O C C EMBLAZON 854E DMF AMF CAF OHF NHF OSF DDF  
O C C JUANADA 858F

O C C DIXIE ERICA 946K 13890899

O C C GLORY 950G  
O C C DIXIE ERICA 816B

EPDs	BW	WW	YW	MILK	TM	CE	MCE
	-0.3	+44	+72	+22	+44	+8	-1

An A.I. sire we used once again because the female side looked so attractive to us. Very moderate, very easy fleshing, great udders, and quiet disposition. Very impressed with the bull calves Missing Link put together. Deep, thick and real black.



1 son sells

**REFERENCE  
SIRE**

**CONNEALY STINGRAY 9618**

IMP 9618Y 1935473 AMF CAF NHF DDF JANUARY 16 2011

CONNEALY FINAL SOLUTION 9449 AMF CAF OHF NHF DDF 1690256

CONNEALY ANSWER 71 AMF CAF OHF NHF DDF  
ESTE OF CONANGA 364

POWA OF CONANGA 9618 16450004

CONNEALY IMPRESSION AMF CAF OHF NHF DDF  
POYA OF CONANGA 687 919

EPDs	BW	WW	YW	MILK	TM	CE	MCE
	-2.3	+53	+88	+26	+53	+20	+16

A "Sleep All Night" heifer bull. Accelerated Genetics says his daughters have deep rib shape, easy fleshing ability and beautiful udders. The cowman's kind!



Lot 52

LOT  
52

**66 MISSING LINK 135D**

MALE CKM 135D 1930071 APRIL 17 2016

O C C MISSING LINK 830M 1655506

O C C HEADLINER 661H  
O C C DIXIE ERICA 946K

SOUTH FORK DUCHESS 19Z 1677102

BAD LANDS ALLIANCE 14W  
BAD LANDS DUCHESS 310N

AOD	BW	205D	365D	EPDs	BW	WW	YW	MILK
6	85	548	1101		+2.5	+44	+74	+16

LOT  
53

**66 MISSING LINK 292D**

MALE CKM 292D 1951820 APRIL 24 2016

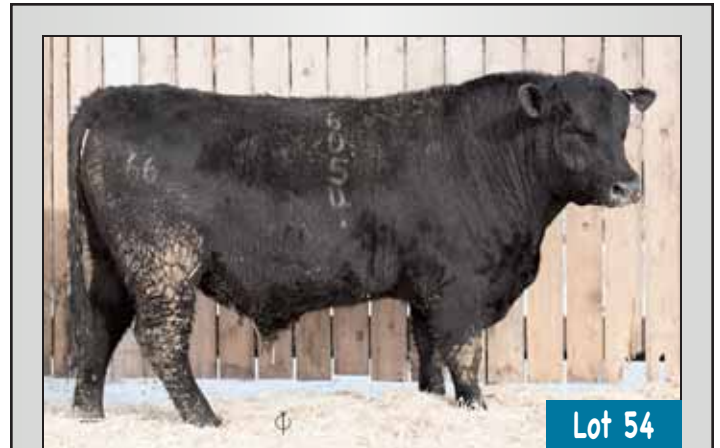
O C C MISSING LINK 830M 1655506

O C C HEADLINER 661H  
O C C DIXIE ERICA 946K

BAD LANDS ROSETTE 4032P 1220050

HIGH VALLEY 4C6 AMBUSH AMF CAF  
BAD LANDS ROSETTE 823H

AOD	BW	205D	365D	EPDs	BW	WW	YW	MILK
14	80	535	959		+0.4	+23	+37	+16



Lot 54

LOT  
54

**66 STINGRAY 6054D**

MALE CKM 6054D 1936957 APRIL 22 2016

CONNEALY STINGRAY 9618 AMF CAF NHF DDF 1935473

CONNEALY FINAL SOLUTION 9449 AMF CAF OHF NHF DDF  
POWA OF CONANGA 9618

SOUTH FORK BLACKBIRD 185Y 1640236

DEER RIVER DESIRE 355S  
DEER RIVER BLACKBIRD 472S

AOD	BW	205D	365D	EPDs	BW	WW	YW	MILK
7	82	629	1121		+0.7	+46	+81	+20



1 son sells

**REFERENCE SIRE**

**APEX WINDY 078**

IMP 078U 1665769 AMF CAF OHF NHF OSF DDF JANUARY 14 2008

H A R B WINDY 702 J H AMF CAF OHF NHF DDF 1486741

A A R REALLY WINDY 1205 AMF CAF OHF NHF DDF  
H A R B BLACK LADY 073 J H OHF

APEXETTE LUCY 6037 15920940

APEX MTN FRONT 044  
APEXETTE LUCY 1064

EPDs	BW	WW	YW	MILK	TM	CE	MCE
	+4.0	+64	+103	+25	+57	-2	-3

Moderate birth with big time performance.

LOT 55

**66 WINDY 412D**

MALE CKM 412D 1930334 APRIL 30 2016

APEX WINDY 078 AMF CAF OHF NHF OSF DDF 1665769

H A R B WINDY 702 J H AMF CAF OHF NHF DDF  
APEXETTE LUCY 6037

BAD LANDS ENCHANTRESS 8076U 1457733

BAD LANDS FORTE 101S  
BAD LANDS ENCHANTRESS 5091R

AOD	BW	205D	365D	EPDs	BW	WW	YW	MILK
10	93	599	1103		+3.2	+45	+78	+26

**REFERENCE SIRE**

**COLE CREEK BLACK SEAL 64**

IMP 64B 1844687 MARCH 10 2014

COLE CREEK BLACK SEAL 230 16720470

COLE CREEK BLACK CEDAR 46P AMF CAF NHF DDF  
COLE CREEK JUANADA G 53T

COLE CREEK CLOVA JUANADA 76V 16134336

COLE CREEK JUANADA LAD 81T  
COLE CREEK CLOVANADA 709

EPDs	BW	WW	YW	MILK	TM	CE	MCE
	+2.8	+39	+52	+24	+44	+4	+7

A walking bull purchased from Cole Creek Angus. A "sleep all Night" heifer bull, with good performance and that extra ease of flesh.

1 son sells



Lot 56

LOT 56

**66 BLACK SEAL 523D**

MALE CKM 523D 1930427 MAY 09 2016

COLE CREEK BLACK SEAL 64 1844687

COLE CREEK BLACK SEAL 230  
COLE CREEK CLOVA JUANADA 76V

66 BARBARA 45B 1805728

BAD LANDS ATTRACTION 109Y  
SOUTH FORK BARBARA 88Y

AOD	BW	205D	365D	EPDs	BW	WW	YW	MILK
4	82	570	966		+3.1	+34	+50	+20





2 sons sell

REFERENCE  
SIRE

# SOUTH FORK 26L DAQUANTAE 87Z

CKM 87Z 1677163 APRIL 04 2012

BAD LANDS DAQUANTAE 26L 1066872

R R DAQUANTAE 789E AMF CAF NHF DDF  
BAD LANDS BLACKBIRD BLOSSOM

BAD LANDS ANNE 257M 1121000

HIGH VALLEY 4C6 AMBUSH AMF CAF  
BAD LANDS ANNE 471D

BW: 83 205D: 653 365D: 1075

EPDs	BW	WW	YW	MILK	TM	CE	MCE
	+4.0	+30	+33	+20	+35	-6	+4

A son of the infamous "26L" raised by the Sewall's. A very well structured bull, with extra flesh all the time. Out of a 4C6 Ambush cow. You know the females will be the ones you want to keep. After seeing what 87Z has grown into we have since flushed his dam back to 26L.



Lot 57

LOT  
57

## 66 DAQUANTAE 295D

MALE CKM 295D 1930539 APRIL 24 2016

SOUTH FORK 26L DAQUANTAE 87Z 1677163

BAD LANDS DAQUANTAE 26L  
BAD LANDS ANNE 257M

BAD LANDS PEARL 92X 1555714

REMINGTON ALLIANCE 482T  
BAD LANDS PEARL 5102R

AOD	BW	205D	365D	EPDs	BW	WW	YW	MILK
8	84	667	1067		+2.2	+34	+42	+24



Lot 58

LOT  
58

## 66 DAQUANTAE 446D

MALE CKM 446D 1935834 MAY 02 2016

SOUTH FORK 26L DAQUANTAE 87Z 1677163

BAD LANDS DAQUANTAE 26L  
BAD LANDS ANNE 257M

BAD LANDS HYALITE HEDY 102X 1555721

KBJ ROGUE II 203H  
BAD LANDS HYALITE HEDY 336N

AOD	BW	205D	365D	EPDs	BW	WW	YW	MILK
8	76	578	966		+0.2	+21	+27	+20

*We welcome your visit to view the bulls  
anytime prior to the Sale*







1 son sells

REFERENCE  
SIRE

**SHIPWHEEL CHINOOK**

IMP 7700T 1582467 AMF OHF NHF DDF FEBRUARY 06 2007

H A IMAGE MAKER 0415 AMF CAF OHF NHF DDF 1195032

HERO 6267 OF R R 2418  
H A RITO BLACKCAP 9038

APEX ERISKAY 5506 15252929

MYTTY IN FOCUS AMF CAF OHF NHF DDF  
APEXETTE ERISKAY 3032

EPDs	BW	WW	YW	MILK	TM	CE	MCE
	-1.9	+54	+88	+24	+51	+16	+15

Calving ease, femininity and depth of body. A real "cow mans" kind of bull. We are very impressed with this A.I. sire. Calved heifers sired by Chinook last spring and they are excellent uddered females.



Lot 59

LOT  
59

**66 CHINOOK 89D**

MALE CKM 89D 1930026 APRIL 14 2016

SHIPWHEEL CHINOOK AMF CAF OHF NHF DDF 1582467

H A IMAGE MAKER 0415 AMF CAF OHF NHF DDF  
APEX ERISKAY 5506

66 COUNTESS 120B 1805790

SITZ ALLIANCE 6595 DMF AMF CAF OHF NHF DDF  
BAD LANDS COUNTESS 80X

AOD	BW	205D	365D	EPDs	BW	WW	YW	MILK
4	72	594	991		-0.6	+41	+67	+26

REFERENCE  
SIRE

**F-R MECHANIC 4086**

DMC 4086B 1830176 APRIL 19 2014

WJ MECHANIC 9298W 1529581

CROWFOOT MECHANIC 5789R  
CROWFOOT G V LASS 6686S

F-R 5024 LASS 1207 1655193

F-R 9102 LAD 5024  
F-R OD LASS 5040

BW: 94 205D: 636

EPDs	BW	WW	YW	MILK	TM	CE	MCE
	+8.3	+51	+83	+20	+46	-13	+1

A walking bull purchased from Fraser's. Deep and thick. Extra length with added performance. Being a Mechanic sired bull the females will be moderate, easy fleshing and perfect uddered.

2 sons sell



Lot 60

LOT  
60

**66 MECHANIC 592D**

MALE CKM 592D 1935848 MAY 19 2016

F-R MECHANIC 4086 1830176

WJ MECHANIC 9298W  
F-R 5024 LASS 1207

BAD LANDS LADY 170X 1555833

LOOKOUT CANUCK 65U  
BAD LANDS LADY 223M

AOD	BW	205D	365D	EPDs	BW	WW	YW	MILK
8	92	571	1085		+5.9	+41	+66	+13



Lot 61

LOT  
61

**66 MECHANIC 677D**

MALE CKM 677D 1935892 JUNE 07 2016

F-R MECHANIC 4086 1830176

WJ MECHANIC 9298W  
F-R 5024 LASS 1207

BAD LANDS BLACKCAP 9044W 1502388

S A V FINAL ANSWER 0035 AMF CAF OHF NHF DDF  
BAD LANDS BLACKCAP 4009P

AOD	BW	205D	365D	EPDs	BW	WW	YW	MILK
14	96	573	1058		+5.6	+42	+70	+19

IT'S THE SERVICE  
AFTER THE SALE THAT COUNTS!



# BULL SALE

## YEARLING BULLS



20 sons sell

REFERENCE  
SIRE

### STUART CHISM 82A

EDAM 82A 1736988 FEBRUARY 27 2013

S CHISUM 6175 AMF CAF OHF NHF DDF 1539796

S ALLIANCE 3313 AMF  
S GLORIA 464

STUART MISS ROSE 22U 1454180

DMM AMBUSH 03M  
STUART MISS ROSE 12M

BW: 86

EPDs	BW	WW	YW	MILK	TM	CE	MCE
	+2.9	+69	+113	+21	+56	+5	+12

A walking bull we purchased from Stuart Cattle Station, spring of 2014. 82A is as deep as you will find but yet the calving ease that all ranchers are looking for. 82A may be one of the most docile bulls we have found. The female side of things is even more exciting. We went to Stuart Ranch before purchasing 82A and seen both the dam and grand dam. The grand dam was 12 at that time and after seeing both of them we were determined to own the bull!

TWO YEAR OLD SONS SELL AS LOTS 31- 35



Lot 62

LOT  
62

### 66 CHISM 282E

MALE CKM 282E 1997330 APRIL 25 2017

STUART CHISM 82A 1736988

S CHISUM 6175 AMF CAF OHF NHF DDF  
STUART MISS ROSE 22U

66 PRINCESS 429A 1755605

CONNELY THUNDER AMF CAF OHF NHF DDF  
BAD LANDS PRINCESS 8041U

AOD	BW	205D	EPDs	BW	WW	YW	MILK
5	94	734		+3.1	+63	+104	+23



Lot 63

LOT  
63

### 66 CHISM 77E

MALE CKM 77E 1997142 APRIL 15 2017

STUART CHISM 82A 1736988

S CHISUM 6175 AMF CAF OHF NHF DDF  
STUART MISS ROSE 22U

SYDGEN BLANCHE 1221 1773470

SYDGEN SURVIVOR 7651 AMF CAF NHF  
SYDGEN BLANCHE 9028

AOD	BW	205D	EPDs	BW	WW	YW	MILK
7	78	780		+0.1	+66	+107	+26



Lot 64

LOT  
64

### 66 CHISM 129E

MALE CKM 129E 1997186 APRIL 18 2017

STUART CHISM 82A 1736988

S CHISUM 6175 AMF CAF OHF NHF DDF  
STUART MISS ROSE 22U

66 ZARA 121A 1738800

BOYD RESUME 9008 AMF CAF NHF DDF  
DEER RIVER ZARA 214U AMF

AOD	BW	205D	EPDs	BW	WW	YW	MILK
5	96	682		+3.9	+55	+94	+23





Lot 65

LOT  
65

### 66 CHISM 262E

MALE CKM 262E 1997309 APRIL 24 2017

STUART CHISM 82A 1736988

S CHISUM 6175 AMF CAF OHF NHF DDF  
STUART MISS ROSE 22U

BAD LANDS LASSIE 1044Y 1655922

BAD LANDS ALLIANCE 14W  
BAD LANDS LASSIE 5124R

AOD	BW	205D	EPDs	BW	WW	YW	MILK
7	95	721		+3.9	+66	+104	+20

LOT  
66

### 66 CHISM 193E

MALE CKM 193E 1997249 APRIL 21 2017

STUART CHISM 82A 1736988

S CHISUM 6175 AMF CAF OHF NHF DDF  
STUART MISS ROSE 22U

DEER RIVER PLUS 126S 1351115

DEER RIVER 42G MAX 166P  
DEER RIVER ROSEBUD 187P

AOD	BW	205D	EPDs	BW	WW	YW	MILK
12	91	744		+2.9	+61	+103	+21



Lot 67

LOT  
67

### 66 CHISM 173E

MALE CKM 173E 1997226 APRIL 20 2017

STUART CHISM 82A 1736988

S CHISUM 6175 AMF CAF OHF NHF DDF  
STUART MISS ROSE 22U

DEER RIVER G V LASS 172U 1478226

DEER RIVER 42G MAX 247P  
CROWFOOT G V LASS 4692P

AOD	BW	205D	EPDs	BW	WW	YW	MILK
10	95	684		+3.4	+61	+100	+18

LOT  
68

### 66 CHISM 157E

MALE CKM 157E 1997209 APRIL 19 2017

STUART CHISM 82A 1736988

S CHISUM 6175 AMF CAF OHF NHF DDF  
STUART MISS ROSE 22U

COLE CREEK 7 JUANADA 474 1844682

COLE CREEK BLACK SEAL 1132  
COLE CREEK 7 OF JUANADA 28T

AOD	BW	205D	EPDs	BW	WW	YW	MILK
4	78	674		+1.4	+50	+81	+23



Lot 69

LOT  
69

### 66 CHISM 408E

MALE CKM 408E 1997440 APRIL 30 2017

STUART CHISM 82A 1736988

S CHISUM 6175 AMF CAF OHF NHF DDF  
STUART MISS ROSE 22U

DEER RIVER BARBARA 55W 1500547

S A V 004 DENSITY 4336 AMF CAF OHF NHF DDF  
DEER RIVER BARBARA 262P

AOD	BW	205D	EPDs	BW	WW	YW	MILK
9	90	662		+2.9	+56	+91	+20

## BULLS SOLD IN CATALOG ORDER

Updated weights & scrotal measurements available Sale Day

**\$100 DISCOUNT**

Per yearling bull  
if taken home sale day

**\$60 DISCOUNT**

For all yearling bulls  
taken home sale day to  
cover semen evaluation



Lot 70

LOT  
70

### 66 CHISM 74E

MALE CKM 74E 1997139 APRIL 15 2017

STUART CHISM 82A 1736988

S CHISUM 6175 AMF CAF OHF NHF DDF  
STUART MISS ROSE 22U

SOUTH FORK LEAH 211Z CAF 1709540

DEER RIVER BANDO 197W CAC  
DEER RIVER LEAH 125U AMF

AOD	BW	205D	EPDs	BW	WW	YW	MILK
6	80	657		-0.3	+48	+86	+26

LOT  
71

### 66 CHISM 309E

MALE CKM 309E 1997357 TWIN APRIL 26 2017

STUART CHISM 82A 1736988

S CHISUM 6175 AMF CAF OHF NHF DDF  
STUART MISS ROSE 22U

DEER RIVER BLACKBIRD 262M 1120405

DEER RIVER 044 TRAVELER 185J  
DEER RIVER BLACKBIRD 140K

AOD	BW	205D	EPDs	BW	WW	YW	MILK
16	68	686		+3.1	+51	+85	+21

LOT  
72

### 66 CHISM 123E

MALE CKM 123E 1997184 APRIL 18 2017

STUART CHISM 82A 1736988

S CHISUM 6175 AMF CAF OHF NHF DDF  
STUART MISS ROSE 22U

BAD LANDS LASSIE 4008P 1201500

BAD LANDS WIDESPREAD 17J AMF  
BAD LANDS LASSIE 79K

AOD	BW	205D	EPDs	BW	WW	YW	MILK
14	81	692		+2.1	+56	+86	+17



[ LOT 73 ]

## YEARLING BULLS

Yearling bulls going back to our ranch  
*MUST* be insured - Insurance available Sale Day



Lot 73

LOT  
73

### 66 CHISM 412E

MALE CKM 412E 1997444 APRIL 30 2017

STUART CHISM 82A 1736988

S CHISUM 6175 AMF CAF OHF NHF DDF  
STUART MISS ROSE 22U

66 DUCHESS 75B 1827622

V D A R CEDAR WIND 8111  
SOUTH FORK DUCHESS 74Z

AOD	BW	205D	EPDs	BW	WW	YW	MILK
4	87	734		+2.2	+61	+97	+24

LOT  
74

### 66 CHISM 5E

MALE CKM 5E 1997065 APRIL 04 2017

STUART CHISM 82A 1736988

S CHISUM 6175 AMF CAF OHF NHF DDF  
STUART MISS ROSE 22U

66 ZARA JUMBO 155B 1805819

V D A R CEDAR WIND 8111  
SOUTH FORK ZARA JUMBO 604Z

AOD	BW	205D	EPDs	BW	WW	YW	MILK
4	59	665		-1.7	+59	+93	+25



Lot 75

LOT  
75

### 66 CHISM 111E

MALE CKM 111E 1997168 APRIL 17 2017

STUART CHISM 82A 1736988

S CHISUM 6175 AMF CAF OHF NHF DDF  
STUART MISS ROSE 22U

REMITALL NANCY 801S 1350077

JUSTAMERE 1118 CASH 665P  
REMITALL NANCY 95L

AOD	BW	205D	EPDs	BW	WW	YW	MILK
12	70	622		+0.3	+50	+86	+23



Lot 76

LOT  
76

## 66 CHISM 213E

MALE CKM 213E 1997263 APRIL 22 2017

STUART CHISM 82A 1736988

S CHISUM 6175 AMF CAF OHF NHF DDF  
STUART MISS ROSE 22U

SOUTH FORK LASSIE 2Z 1677086

F-R 5024 LAD 9228  
BAD LANDS LASSIE 24X

AOD	BW	205D	EPDs	BW	WW	YW	MILK
6	78	627		+0.1	+51	+82	+22



Lot 77

LOT  
77

## 66 CHISM 66E

MALE CKM 66E 1997127 APRIL 14 2017

STUART CHISM 82A 1736988

S CHISUM 6175 AMF CAF OHF NHF DDF  
STUART MISS ROSE 22U

66 DUCHESS 360B 1806023

WILL ROLE MODEL AMF CAF NHF DDF  
BAD LANDS DUCHESS 7009T

AOD	BW	205D	EPDs	BW	WW	YW	MILK
4	78	635		+1.8	+54	+90	+22



Lot 78

LOT  
78

## 66 CHISM 236E

MALE CKM 236E 1997285 APRIL 23 2017

STUART CHISM 82A 1736988

S CHISUM 6175 AMF CAF OHF NHF DDF  
STUART MISS ROSE 22U

BAD LANDS BARBARA 1087Y 1615351

BAD LANDS FORTE 16U  
BAD LANDS BARBARA 8047U

AOD	BW	205D	EPDs	BW	WW	YW	MILK
7	89	643		+3.0	+48	+85	+22



Lot 79

LOT  
79

## 66 CHISM 401E

MALE CKM 401E 1997436 APRIL 30 2017

STUART CHISM 82A 1736988

S CHISUM 6175 AMF CAF OHF NHF DDF  
STUART MISS ROSE 22U

SOUTH FORK LASSIE 48Z 1677128

BAD LANDS ALLIANCE 14W  
BAD LANDS LASSIE 312N

AOD	BW	205D	EPDs	BW	WW	YW	MILK
6	90	632		+3.1	+56	+87	+18



Lot 80

LOT  
80

## 66 CHISM 255E

MALE CKM 255E 1997303 APRIL 24 2017

STUART CHISM 82A 1736988

S CHISUM 6175 AMF CAF OHF NHF DDF  
STUART MISS ROSE 22U

66 ROSETTE 540A 1760983

DEER RIVER IMAGE MAKER 231W  
BAD LANDS ROSETTE 7049T

AOD	BW	205D	EPDs	BW	WW	YW	MILK
5	76	626		+0.4	+50	+80	+18



Lot 81

LOT  
81

## 66 CHISM 174E

MALE CKM 174E 1997227 APRIL 20 2017

STUART CHISM 82A 1736988

S CHISUM 6175 AMF CAF OHF NHF DDF  
STUART MISS ROSE 22U

BAD LANDS RIBBON 8114U 1429238

HBR ECLIPSE 7116  
IRON SPRING BLUR RIBBON HUSK

AOD	BW	205D	EPDs	BW	WW	YW	MILK
10	72	595		-0.3	+39	+62	+18



5 sons sell

**REFERENCE  
SIRE**

**CONNEALY COURAGE 25L**

IMP 25Z 1898402 ET AMF NHF DDF FEBRUARY 06 2012

CONNEALY CONFIDENCE 0100 CAF OHF DDF 1716467

CONNEALY TOBIN AMF OHF NHF DDF  
BECKA GALA OF CONANGA 8281 CAF DDF

PEARL PAMMY OF CONANGA 194 CAF DDF 14528835

VERMILION DATELINE 7078 AMF CAF OHF NHF DDF  
PEARL JAM OF CONANGA 6114

BW: 83

EPDs	BW	WW	YW	MILK	TM	CE	MCE
	+0.0	+56	+96	+28	+56	+16	+15

A new A.I. sire we found that we are really impressed with. Excellent set of calves, long bodied, great top and really good hind quarters and light birth weights. The heifer calves are really what we are looking for, easy keeping, and moderate frame, with extra volume. Super looking dam that produced Courage 25L. We have bred heifers calving this spring, super excited to see if they all look like her.



OOPS!



LOT  
82

**66 COURAGE 7050E**

MALE CKM 7050E 1997345 APRIL 25 2017

CONNEALY COURAGE 25L AMF NHF DDF 1898402

CONNEALY CONFIDENCE 0100 CAF OHF DDF  
PEARL PAMMY OF CONANGA 194 CAF DDF

BAD LANDS LADY FANNY 1107Y 1656556

S A V WORLDWIDE 9088  
BAD LANDS LADY FANNY 57K

AOD	BW	205D	EPDs	BW	WW	YW	MILK
7	84	707		+1.6	+49	+82	+28



LOT  
83

**66 COURAGE 7060E**

MALE CKM 7060E 1997390 APRIL 27 2017

CONNEALY COURAGE 25L AMF NHF DDF 1898402

CONNEALY CONFIDENCE 0100 CAF OHF DDF  
PEARL PAMMY OF CONANGA 194 CAF DDF

BAD LANDS BLACKBIRD 9008W 1502306

MYTTY IN FOCUS AMF CAF OHF NHF DDF  
BAD LANDS BLACKBIRD 7032T

AOD	BW	205D	EPDs	BW	WW	YW	MILK
9	75	640		-0.8	+51	+86	+26



LOT  
84

**66 COURAGE 7007E**

MALE CKM 7007E 1997115 APRIL 13 2017

CONNEALY COURAGE 25L AMF NHF DDF 1898402

CONNEALY CONFIDENCE 0100 CAF OHF DDF  
PEARL PAMMY OF CONANGA 194 CAF DDF

66 BLACKBIRD 4148B 1813929

BAD LANDS ALLIANCE 326X  
DEER RIVER BLACKBIRD 71S

AOD	BW	205D	EPDs	BW	WW	YW	MILK
4	69	649		-0.2	+44	+71	+27



**LOT  
85**

**66 COURAGE 7014E**

MALE CKM 7014E 1997134 APRIL 14 2017

CONNEALY COURAGE 25L AMF NHF DDF 1898402

CONNEALY CONFIDENCE 0100 CAF OHF DDF  
PEARL PAMMY OF CONANGA 194 CAF DDF

66 DUCHESS 3110A 1760951

SOUTH FORK RITO 2X  
DEER RIVER DUCHESS 631W

AOD	BW	205D	EPDs	BW	WW	YW	MILK
5	<b>79</b>	577		+0.9	+43	+81	+18



**LOT  
86**

**66 COURAGE 7025E**

MALE CKM 7025E 1997180 TWIN APRIL 17 2017

CONNEALY COURAGE 25L AMF NHF DDF 1898402

CONNEALY CONFIDENCE 0100 CAF OHF DDF  
PEARL PAMMY OF CONANGA 194 CAF DDF

DEER RIVER BARBARA 618W 1500871

DEER RIVER 42G MAX 247P  
DEER RIVER BARBARA 238S

AOD	BW	205D	EPDs	BW	WW	YW	MILK
9	<b>77</b>	656		+0.5	+45	+82	+21



- **THANK YOU TO** -

*Sarah Buchanan*

at Golden Thread Livestock Images for doing such an amazing job of taking the pictures and videos of the bulls

*Rose Currie* - for cleaning up the bulls

*Jan Lee* - for designing the catalog





29 sons sell

**REFERENCE  
SIRE**

**V D A R CEDAR WIND 8111**  
IMP 8111Y 1751551 JANUARY 06 2011

COLE CREEK CEDAR RIDGE 1V DMF DWF AMF CAF NHF DDF 1659099

COLE CREEK BLACK CEDAR 46P  
COLE CREEK CLOVANADA 49S

V D A R CHLOE 9727 16434284

V D A R REALLY WINDY 4097 AMF CAF NHF DDF  
V D A R CHLOE 6320

EPDs	BW	WW	YW	MILK	TM	CE	MCE
	-1.1	+50	+84	+27	+52	+11	+10

An A.I. heifer bull we used from Cole Creek bloodlines. Extreme docility with a very moderate birth weight and has excellent performance. We ourselves are very pleased with the growth of these cattle after they were weaned. Competing very well with all the other performance sires. Once again, going back to Cedar Ridge these cattle are displaying that natural ease of flesh. The real "cow mans" kind of cattle! Last spring we had numerous Cedar Wind heifers calving, every heifer that calved had a perfect udder. Not often you can say that with purchased semen from a catalogue.

TWO YEAR OLD SONS SELL AS LOTS 44 & 45

LOOK FOR THE  
'66' FREEZE  
BRAND



**66 RANCH LTD. WANTS TO HELP YOU!**

We at 66 Ranch want to assist you in getting top dollar for your fall calves and feeders.

Please contact us if this is of interest to you.

A premium dollar paid on 66 Ranch sired cattle.



Lot 87

LOT  
87

**66 CEDAR WIND 39E**

MALE CKM 39E 1997100 APRIL 12 2017

V D A R CEDAR WIND 8111 1751551

COLE CREEK CEDAR RIDGE 1V DMF DWF AMF CAF NHF DDF  
V D A R CHLOE 9727

66 MIDDLEBROOK 380C 1867438

66 ALLIANCE 17Z  
DEER RIVER MIDDLEBROOK 383W

AOD	BW	205D	EPDs	BW	WW	YW	MILK
3	77	667		+2.4	+57	+97	+22



Lot 88

LOT  
88

**66 CEDAR WIND 139E**

MALE CKM 139E 1997195 APRIL 19 2017

V D A R CEDAR WIND 8111 1751551

COLE CREEK CEDAR RIDGE 1V DMF DWF AMF CAF NHF DDF  
V D A R CHLOE 9727

66 LADY 425C 1867478

66 ALLIANCE 17Z  
SOUTH FORK LADY 136Z

AOD	BW	205D	EPDs	BW	WW	YW	MILK
3	80	767		+2.3	+67	+108	+26



Lot 89

LOT  
89

**66 CEDAR WIND 367E**

MALE CKM 367E 1997404 APRIL 28 2017

V D A R CEDAR WIND 8111 1751551

COLE CREEK CEDAR RIDGE 1V DMF DWF AMF CAF NHF DDF  
V D A R CHLOE 9727

66 ANNE 193C 1880448

BAD LANDS DAQUANTAE 26L  
BAD LANDS ANNE 257M

AOD	BW	205D	EPDs	BW	WW	YW	MILK
3	84	717		+2.8	+53	+84	+25





**Lot 90**

**LOT 90**

**66 CEDAR WIND 36E**

MALE CKM 36E 1997097 APRIL 12 2017

V D A R CEDAR WIND 8111 1751551

COLE CREEK CEDAR RIDGE 1V DNF DNF AMF CAF NHF DDF  
V D A R CHLOE 9727

SOUTH FORK LADY 244Z 1677298

BAD LANDS ALLIANCE 14W  
BAD LANDS LADY 4013P

AOD	BW	205D	EPDs	BW	WW	YW	MILK
6	88	728		+2.3	+62	+101	+20



**Lot 91**

**LOT 91**

**66 CEDAR WIND 73E**

MALE CKM 73E 1997138 APRIL 15 2017

V D A R CEDAR WIND 8111 1751551

COLE CREEK CEDAR RIDGE 1V DNF DNF AMF CAF NHF DDF  
V D A R CHLOE 9727

DEER RIVER ROSEBUD 170T 1382025

BLACK GEM RAIN AGAIN 340N  
DEER RIVER ROSEBUD 140L

AOD	BW	205D	EPDs	BW	WW	YW	MILK
11	<b>70</b>	643		-2.3	+39	+63	+24

**LOT 92**

**66 CEDAR WIND 382E**

MALE CKM 382E 1997420 APRIL 29 2017

V D A R CEDAR WIND 8111 1751551

COLE CREEK CEDAR RIDGE 1V DNF DNF AMF CAF NHF DDF  
V D A R CHLOE 9727

BAD LANDS BLACKBIRD 128X 1555779

LOOKOUT CANUCK 65U  
BAD LANDS BLACKBIRD 5004R

AOD	BW	205D	EPDs	BW	WW	YW	MILK
8	94	663		+3.4	+54	+85	+18



**Lot 93**

**LOT 93**

**66 CEDAR WIND 32E**

MALE CKM 32E 1997094 APRIL 12 2017

V D A R CEDAR WIND 8111 1751551

COLE CREEK CEDAR RIDGE 1V DNF DNF AMF CAF NHF DDF  
V D A R CHLOE 9727

66 MIDDLEBROOK 301C 1867360

BAD LANDS ALLIANCE 14W  
SOUTH FORK MIDDLEBROOK 125X

AOD	BW	205D	EPDs	BW	WW	YW	MILK
3	<b>70</b>	629		+0.0	+55	+90	+21



**Lot 94**

**LOT 94**

**66 CEDAR WIND 230E**

MALE CKM 230E 1997280 APRIL 23 2017

V D A R CEDAR WIND 8111 1751551

COLE CREEK CEDAR RIDGE 1V DNF DNF AMF CAF NHF DDF  
V D A R CHLOE 9727

66 ANNE 389C 1880450

BAD LANDS DAQUANTAE 26L  
BAD LANDS ANNE 257M

AOD	BW	205D	EPDs	BW	WW	YW	MILK
3	79	643		+1.9	+45	+73	+24

**LOT 95**

**66 CEDAR WIND 65E**

MALE CKM 65E 1997126 APRIL 14 2017

V D A R CEDAR WIND 8111 1751551

COLE CREEK CEDAR RIDGE 1V DNF DNF AMF CAF NHF DDF  
V D A R CHLOE 9727

66 LASSIE 339C 1867397

APEX WINDY 078 AMF CAF OHF NHF OSF DDF  
BAD LANDS LASSIE 1019Y

AOD	BW	205D	EPDs	BW	WW	YW	MILK
3	<b>82</b>	689		+1.6	+58	+94	+25



**SIGHT UNSEEN PURCHASES - YOUR SATISFACTION IS GUARANTEED**

Contact 66 Ranch Ltd. or any of our Sales Staff



Lot 96

LOT  
96

## 66 CEDAR WIND 11E

MALE CKM 11E 1997070 APRIL 08 2017

V D A R CEDAR WIND 8111 1751551

COLE CREEK CEDAR RIDGE 1V DNF DWF AMF CAF NHF DDF  
V D A R CHLOE 9727

BAD LANDS BLACKCAP 9082W 1502466

SANDY CREEK INITIATIVE 52T  
BAD LANDS BLACKCAP 315N

AOD	BW	205D	EPDs	BW	WW	YW	MILK
9	<b>73</b>	578		-0.9	+36	+62	+23



Lot 97

LOT  
97

## 66 CEDAR WIND 212E

MALE CKM 212E 1997262 APRIL 22 2017

V D A R CEDAR WIND 8111 1751551

COLE CREEK CEDAR RIDGE 1V DNF DWF AMF CAF NHF DDF  
V D A R CHLOE 9727

BAD LANDS LADY 170X 1555833

LOOKOUT CANUCK 65U  
BAD LANDS LADY 223M

AOD	BW	205D	EPDs	BW	WW	YW	MILK
8	98	654		+3.5	+50	+82	+16

LOT  
98

## 66 CEDAR WIND 61E

MALE CKM 61E 1997122 APRIL 14 2017

V D A R CEDAR WIND 8111 1751551

COLE CREEK CEDAR RIDGE 1V DNF DWF AMF CAF NHF DDF  
V D A R CHLOE 9727

66 PRIDE 108A 1750265

APEX WINDY 078 AMF CAF OHF NHF OSF DDF  
BAD LANDS PRIDE 363N

AOD	BW	205D	EPDs	BW	WW	YW	MILK
5	<b>72</b>	686		-1.4	+48	+74	+25



Lot 99

LOT  
99

## 66 CEDAR WIND 75E

MALE CKM 75E 1997140 APRIL 15 2017

V D A R CEDAR WIND 8111 1751551

COLE CREEK CEDAR RIDGE 1V DNF DWF AMF CAF NHF DDF  
V D A R CHLOE 9727

BAD LANDS PRIDE 1037Y 1615269

K C F BENNETT TOTAL AMF CAF OHF NHF DDF  
BAD LANDS PRIDE 5075R

AOD	BW	205D	EPDs	BW	WW	YW	MILK
7	<b>73</b>	637		-0.6	+43	+71	+23





Lot 100

LOT 100

**66 CEDAR WIND 372E**

MALE CKM 372E 1997413 APRIL 29 2017

V D A R CEDAR WIND 8111 1751551

COLE CREEK CEDAR RIDGE 1V DMF DWF AMF CAF NHF DDF  
V D A R CHLOE 9727

66 PRIDE 227C 1867293

CONNELLY THUNDER AMF CAF OHF NHF DDF  
66 PRIDE 54A

AOD	BW	205D	EPDs	BW	WW	YW	MILK
3	76	669		-0.9	+56	+96	+26



Lot 101

LOT 101

**66 CEDAR WIND 299E**

MALE CKM 299E 1997349 APRIL 26 2017

V D A R CEDAR WIND 8111 1751551

COLE CREEK CEDAR RIDGE 1V DMF DWF AMF CAF NHF DDF  
V D A R CHLOE 9727

66 ROSEBUD 91C 1867064

STUART CHISM 82A  
SOUTH FORK ROSEBUD 128Y

AOD	BW	205D	EPDs	BW	WW	YW	MILK
3	69	717		-0.2	+61	+98	+24



Lot 102

LOT 102

**66 CEDAR WIND 71E**

MALE CKM 71E 1997136 APRIL 15 2017

V D A R CEDAR WIND 8111 1751551

COLE CREEK CEDAR RIDGE 1V DMF DWF AMF CAF NHF DDF  
V D A R CHLOE 9727

66 DUCHESS 32C 1867090

STUART CHISM 82A  
BAD LANDS DUCHESS 1129Y

AOD	BW	205D	EPDs	BW	WW	YW	MILK
3	74	653		+0.2	+53	+89	+25



Lot 103

LOT 103

**66 CEDAR WIND 122E**

MALE CKM 122E 1997183 APRIL 18 2017

V D A R CEDAR WIND 8111 1751551

COLE CREEK CEDAR RIDGE 1V DMF DWF AMF CAF NHF DDF  
V D A R CHLOE 9727

66 DUCHESS 350C 1867408

APEX WINDY 078 AMF CAF OHF NHF OSF DDF  
DEER RIVER DUCHESS 571U

AOD	BW	205D	EPDs	BW	WW	YW	MILK
3	88	703		+3.3	+59	+96	+26

LOT 104

**66 CEDAR WIND 161E**

MALE CKM 161E 1997215 APRIL 20 2017

V D A R CEDAR WIND 8111 1751551

COLE CREEK CEDAR RIDGE 1V DMF DWF AMF CAF NHF DDF  
V D A R CHLOE 9727

66 BLACKBIRD 152C 1867213

66 ALLIANCE 17Z  
DEER RIVER BLACKBIRD 516R

AOD	BW	205D	EPDs	BW	WW	YW	MILK
3	70	705		+0.7	+64	+104	+26



KIDS' COW



**LOT  
105**

## 66 CEDAR WIND 154E

MALE CKM 154E 1997207 APRIL 19 2017

V D A R CEDAR WIND 8111 1751551

COLE CREEK CEDAR RIDGE 1V DNF DWF AMF CAF NHF DDF  
V D A R CHLOE 9727

66 DUCHESS 251C 1867318

66 ALLIANCE 17Z  
SOUTH FORK DUCHESS 427Z

AOD	BW	205D	EPDs	BW	WW	YW	MILK
3	<b>72</b>	578		+1.0	+49	+84	+21



**Lot 106**

**LOT  
106**

## 66 CEDAR WIND 12E

MALE CKM 12E 1997071 APRIL 08 2017

V D A R CEDAR WIND 8111 1751551

COLE CREEK CEDAR RIDGE 1V DNF DWF AMF CAF NHF DDF  
V D A R CHLOE 9727

66 IDELETTE 255C 1867321

66 ALLIANCE 17Z  
DEER RIVER IDELETTE 217U

AOD	BW	205D	EPDs	BW	WW	YW	MILK
3	<b>79</b>	594		+0.8	+49	+83	+25



**Lot 107**

**LOT  
107**

## 66 CEDAR WIND 72E

MALE CKM 72E 1997137 APRIL 15 2017

V D A R CEDAR WIND 8111 1751551

COLE CREEK CEDAR RIDGE 1V DNF DWF AMF CAF NHF DDF  
V D A R CHLOE 9727

66 ELINE LASS 264C 1867328

WK BOBCAT DDF  
66 ELINE LASS 218A

AOD	BW	205D	EPDs	BW	WW	YW	MILK
3	<b>70</b>	605		-1.9	+42	+76	+24



**Lot 108**

**LOT  
108**

## 66 CEDAR WIND 115E

MALE CKM 115E 1997170 APRIL 17 2017

V D A R CEDAR WIND 8111 1751551

COLE CREEK CEDAR RIDGE 1V DNF DWF AMF CAF NHF DDF  
V D A R CHLOE 9727

66 ANNIE 513C 1876623

BAD LANDS FINAL ANSWER 107W  
BAD LANDS ANNIE 12X

AOD	BW	205D	EPDs	BW	WW	YW	MILK
3	80	623		+2.8	+53	+89	+24

**LOT  
109**

## 66 CEDAR WIND 248E

MALE CKM 248E 1997293 APRIL 23 2017

V D A R CEDAR WIND 8111 1751551

COLE CREEK CEDAR RIDGE 1V DNF DWF AMF CAF NHF DDF  
V D A R CHLOE 9727

66 DUCHESS 250C 1867317

WILL ROLE MODEL AMF CAF NHF DDF  
SOUTH FORK DUCHESS 16X

AOD	BW	205D	EPDs	BW	WW	YW	MILK
3	<b>51</b>	549		-3.7	+36	+64	+21

**LOT  
110**

## 66 CEDAR WIND 70E

MALE CKM 70E 1997135 APRIL 15 2017

V D A R CEDAR WIND 8111 1751551

COLE CREEK CEDAR RIDGE 1V DNF DWF AMF CAF NHF DDF  
V D A R CHLOE 9727

66 MISS MANNERS 567C 1867590

BAD LANDS FINAL ANSWER 107W  
DEER RIVER MISS MANNERS 159U AMF

AOD	BW	205D	EPDs	BW	WW	YW	MILK
3	<b>75</b>	563		+1.0	+42	+68	+20



YEARLING BULLS SENT BACK TO OUR RANCH

Will be semen evaluated & ready for pickup by May 15

LOT  
111

# 66 CEDAR WIND 91E

MALE CKM 91E 1997152 APRIL 16 2017

V D A R CEDAR WIND 8111 1751551

COLE CREEK CEDAR RIDGE 1V DNF DWF AMF CAF NHF DDF  
V D A R CHLOE 9727

66 DUCHESS 403C 1867457

66 ALLIANCE 17Z  
BAD LANDS DUCHESS 310N

AOD	BW	205D	EPDs	BW	WW	YW	MILK
3	<b>68</b>	528		+0.5	+44	+74	+21



Lot 112

LOT  
112

# 66 CEDAR WIND 314E

MALE CKM 314E 1997360 APRIL 26 2017

V D A R CEDAR WIND 8111 1751551

COLE CREEK CEDAR RIDGE 1V DNF DWF AMF CAF NHF DDF  
V D A R CHLOE 9727

66 BLACKBIRD 249C 1867316

STUART CHISM 82A  
DEER RIVER BLACKBIRD 105W

AOD	BW	205D	EPDs	BW	WW	YW	MILK
3	<b>73</b>	613		-0.6	+46	+75	+21

LOT  
113

# 66 CEDAR WIND 221E

MALE CKM 221E 1997270 APRIL 22 2017

V D A R CEDAR WIND 8111 1751551

COLE CREEK CEDAR RIDGE 1V DNF DWF AMF CAF NHF DDF  
V D A R CHLOE 9727

66 LADY 1867527

BAD LANDS ATTRACTION 109Y  
BAD LANDS LADY 1089Y

AOD	BW	205D	EPDs	BW	WW	YW	MILK
3	74	578		+1.6	+42	+70	+22



Lot 114

LOT  
114

# 66 CEDAR WIND 171E

MALE CKM 171E 1997224 APRIL 20 2017

V D A R CEDAR WIND 8111 1751551

COLE CREEK CEDAR RIDGE 1V DNF DWF AMF CAF NHF DDF  
V D A R CHLOE 9727

66 DUCHESS 525C 1867564

WIWA CREEK MONARCH 46'13  
BAD LANDS DUCHESS 1000Y

AOD	BW	205D	EPDs	BW	WW	YW	MILK
3	<b>76</b>	526		+2.1	+42	+70	+22



Lot 115

LOT  
115

# 66 CEDAR WIND 167E

MALE CKM 167E 1997220 APRIL 20 2017

V D A R CEDAR WIND 8111 1751551

COLE CREEK CEDAR RIDGE 1V DNF DWF AMF CAF NHF DDF  
V D A R CHLOE 9727

66 BLACKBIRD 364C 1867422

66 ALLIANCE 17Z  
DEER RIVER BLACKBIRD 44S

AOD	BW	205D	EPDs	BW	WW	YW	MILK
3	<b>62</b>	499		-1.0	+38	+65	+20





1 son sells

**REFERENCE  
SIRE**

**SANKEYS JUSTIFIED 101**

IMP 101Y 1762026 JANUARY 16 2011

SANKEYS LAZER 609 OF 6N DMF AMF 1520672

EXAR LUTTON 1831 AMF CAF OHF NHF DDF  
ROTH ELDORENE 1195 DMF

SANKEYS ERICA 525 15269991

DAJS ALL STAR M243 OHF  
EXARA ERICA 6338

EPDs	BW	WW	YW	MILK	TM	CE	MCE
	+4.8	+65	+112	+25	+58	-8	-5

Deep, thick and very attractive cattle. We are really impressed with the expression of muscle these cattle are displaying. Very confident the bulls sired by Justified will put pounds on your calves and dollars in your jeans.



Lot 116

**LOT  
116**

**66 JUSTIFIED 92E**

MALE CKM 92E 1997153 APRIL 16 2017

SANKEYS JUSTIFIED 101 1762026

SANKEYS LAZER 609 OF 6N DMF AMF  
SANKEYS ERICA 525

SOUTH FORK MINA 247X 1594097

DEER RIVER SHALOM 87T  
DEER RIVER MINA 86U

AOD	BW	205D	EPDs	BW	WW	YW	MILK
8	81	683		+1.3	+52	+86	+22



*Good Luck!*

**YOU COULD WIN A 66 RANCH HEIFER**

The Lot Number of each bull sold will go into a draw after the sale.  
The drawn Lot # wins!

**- OPTION A -**

Pick one out of a pen of 10 hand selected 66 Ranch open commercial heifers to take home and put in your herd

or **- OPTION B -**

A \$1,000 cheque made out to you!





6 sons sell

REFERENCE  
SIRE

## COLE CREEK BLACK CEDAR 46P

IMP 46N 1605479 FEBRUARY 16 2003

C H QUANTUM 6247 12687606

C H QUANTUM 3330  
C H BLACKBIRD 0136

COLE CREEK CLOVA JUANADA 67 12872634

AA R WINDY RIDGE 523  
COLE CREEK CLOVA JUANADA 811

EPDs	BW	WW	YW	MILK	TM	CE	MCE
	+2.2	+46	+82	+20	+43	+2	+6

Maternal, Maternal, Maternal! 46P was raised by Cole Creek Angus in Billings Montana. We toured their cow herd last year again. Possibly one of the best herds we have been in. Not a bad foot or udder to be found. We seen a large number of 46P sired cows that were 13 years old at the time, that being the reason we sourced 46P semen to use in our herd. Along with the super strong maternal side, 46P has sired some dandy bull calves. Real easy fleshing, deep sided cattle.

TWO YEAR OLD SONS SELL AS LOTS 49 - 51



Lot 117

LOT  
117

## 66 BLACK CEDAR 143E

MALE CKM 143E 1997197 APRIL 19 2017

COLE CREEK BLACK CEDAR 46P AMF CAF NHF DDF 1605479

C H QUANTUM 6247  
COLE CREEK CLOVA JUANADA 67

66 ROSEBUD 2A 1738706

DEER RIVER DESIRE 564W  
SOUTH FORK ROSEBUD 199X

AOD	BW	205D	EPDs	BW	WW	YW	MILK
5	68	617		-0.4	+43	+72	+12

LOT  
118

## 66 BLACK CEDAR 149E

MALE CKM 149E 1997202 APRIL 19 2017

COLE CREEK BLACK CEDAR 46P AMF CAF NHF DDF 1605479

C H QUANTUM 6247  
COLE CREEK CLOVA JUANADA 67

BAD LANDS LASSIE 24X 1555603

SANDY CREEK INITIATIVE 52T  
BAD LANDS LASSIE 6124S

AOD	BW	205D	EPDs	BW	WW	YW	MILK
8	82	630		+2.1	+41	+69	+21



Lot 119

LOT  
119

## 66 BLACK CEDAR 146E

MALE CKM 146E 1997199 APRIL 19 2017

COLE CREEK BLACK CEDAR 46P AMF CAF NHF DDF 1605479

C H QUANTUM 6247  
COLE CREEK CLOVA JUANADA 67

66 LADY FANNY 116A 1738797

CONNELY IMPRINT 8317 AMF CAF NHF  
BAD LANDS LADY FANNY 9066W

AOD	BW	205D	EPDs	BW	WW	YW	MILK
5	79	602		+0.4	+44	+74	+19



Lot 120

LOT  
120

## 66 BLACK CEDAR 216E

MALE CKM 216E 1997266 APRIL 22 2017

COLE CREEK BLACK CEDAR 46P AMF CAF NHF DDF 1605479

C H QUANTUM 6247  
COLE CREEK CLOVA JUANADA 67

66 IDELETTE 254A 1750248

APEX WINDY 078 AMF CAF OHF NHF OSF DDF  
DEER RIVER IDELETTE 219P

AOD	BW	205D	EPDs	BW	WW	YW	MILK
5	96	686		+4.2	+55	+92	+18

LOT  
121

## 66 BLACK CEDAR 172E

MALE CKM 172E 1997225 APRIL 20 2017

COLE CREEK BLACK CEDAR 46P AMF CAF NHF DDF 1605479

C H QUANTUM 6247  
COLE CREEK CLOVA JUANADA 67

SOUTH FORK LADY 291Z 1677348

LOOKOUT CANUCK 65U  
BAD LANDS LADY 9001W

AOD	BW	205D	EPDs	BW	WW	YW	MILK
6	83	552		+0.9	+38	+61	+13

LOT  
122

## 66 BLACK CEDAR 240E

MALE CKM 240E 1997289 APRIL 23 2017

COLE CREEK BLACK CEDAR 46P AMF CAF NHF DDF 1605479

C H QUANTUM 6247  
COLE CREEK CLOVA JUANADA 67

BAD LANDS DUCHESS 1041Y 1615278

NLC FEATURE ATTRACTION 3W  
BAD LANDS DUCHESS 7024T

AOD	BW	205D	EPDs	BW	WW	YW	MILK
7	87	619		+3.1	+42	+71	+21



5 sons sell

An A.I. sire we used which has superior performance and a very respectable birth weight at 71 lbs. A very stylish bull and obviously passes it on to his progeny. A very strong sire group on offer, from the first one to the last one. Going back to Alliance 6595 we know you will love the females.

REFERENCE  
SIRE

# CONNELY CONSENSUS 7229

IMP 9122W 1593730 AMF CAF OHF NHF OSF DDF JANUARY 15 2009

CONNELY CONSENSUS DDF 15513367

KMK ALLIANCE 6595 187 AMF CAF OHF NHF DDF  
BLINDA OF CONANGA 004

BLUE LILLY OF CONANGA 16 CAF 15804270

WOODHILL ADMIRAL 77K AMF CAF OHF NHF DDF  
BLUE CASH OF CONANGA 6020 CAF

EPDs	BW	WW	YW	MILK	TM	CE	MCE
	+1.9	+56	+94	+22	+50	+6	+4



Lot 123



Lot 125

LOT  
125

## 66 CONSENSUS 329E

MALE CKM 329E 1999211 APRIL 27 2017

CONNELY CONSENSUS 7229 AMF CAF OHF NHF OSF DDF 1593730

CONNELY CONSENSUS DDF  
BLUE LILLY OF CONANGA 16 CAF

BAD LANDS BARBARA ROSE 53X 1555660

S A V FINAL ANSWER 0035 AMF CAF OHF NHF DDF  
RONAN BARBARA ROSE 25M

AOD	BW	205D	EPDs	BW	WW	YW	MILK
8	84	616		+1.2	+48	+81	+18

LOT  
126

## 66 CONSENSUS 405E

MALE CKM 405E 1997438 APRIL 30 2017

CONNELY CONSENSUS 7229 AMF CAF OHF NHF OSF DDF 1593730

CONNELY CONSENSUS DDF  
BLUE LILLY OF CONANGA 16 CAF

SOUTH FORK IDELETTE 382Z 1677421

B C MATRIX 4132 AMF CAF OHF NHF DDF  
DEER RIVER IDELETTE 469P

AOD	BW	205D	EPDs	BW	WW	YW	MILK
6	92	645		+2.9	+47	+83	+19



Lot 127

LOT  
127

## 66 CONSENSUS 330E

MALE CKM 330E 1997373 APRIL 27 2017

CONNELY CONSENSUS 7229 AMF CAF OHF NHF OSF DDF 1593730

CONNELY CONSENSUS DDF  
BLUE LILLY OF CONANGA 16 CAF

66 COUNTESS 30A 1738729

LOOKOUT CANUCK 65U  
BAD LANDS COUNTESS 14X

AOD	BW	205D	EPDs	BW	WW	YW	MILK
5	86	545		+2.2	+36	+57	+18

LOT  
123

## 66 CONSENSUS 304E

MALE CKM 304E 1997353 APRIL 26 2017

CONNELY CONSENSUS 7229 AMF CAF OHF NHF OSF DDF 1593730

CONNELY CONSENSUS DDF  
BLUE LILLY OF CONANGA 16 CAF

SOUTH FORK BLACKCAP 97Z 1677168

S A F CONNECTION AMF CAF OHF NHF DDF  
BAD LANDS BLACKCAP 346N

AOD	BW	205D	EPDs	BW	WW	YW	MILK
6	85	731		+0.8	+54	+89	+20



Lot 124

LOT  
124

## 66 CONSENSUS 151E

MALE CKM 151E 1997204 APRIL 19 2017

CONNELY CONSENSUS 7229 AMF CAF OHF NHF OSF DDF 1593730

CONNELY CONSENSUS DDF  
BLUE LILLY OF CONANGA 16 CAF

BAD LANDS DELIA 84X 1555701

DUNLOUISE COMMANDER BOND AMF CAF OHF NHF DDF  
BAD LANDS DELIA 12K

AOD	BW	205D	EPDs	BW	WW	YW	MILK
8	76	654		+0.3	+43	+64	+16





9 sons sell

REFERENCE  
SIRE

# COLE CREEK BLACK CEDAR 1100

IMP 1100X 1998932 FEBRUARY 11 2010

COLE CREEK BLACK CEDAR 46P AMF CAF NHF DDF 1605479

C H QUANTUM 6247  
COLE CREEK CLOVA JUANADA 67

COLE CREEK JUANADA BIRD 38N 14227801

HBR ENCORE 0544  
COLE CREEK JUANITA 311

EPDs	BW	WW	YW	MILK	TM	CE	MCE
	+0.8	+35	+62	+24	+42	+3	+2

An A.I. sire we used on heifers. After calving out over 50 heifers bred to 1100 we fell he is a "Sleep All Night" heifer bull. Average BW on bull calves is 75 lbs. and 69 lbs. on heifers. His progeny are displaying super style with great length and width and as well very attractive Angus cattle.



Lot 128



Lot 130

LOT  
128

## 66 BLACK CEDAR 366E

MALE CKM 366E 2008011 APRIL 28 2017

COLE CREEK BLACK CEDAR 1100 1998932

COLE CREEK BLACK CEDAR 46P AMF CAF NHF DDF  
COLE CREEK JUANADA BIRD 38N

66 BLACKBIRD 184C 1867244

APEX WINDY 078 AMF CAF OHF NHF OSF DDF  
SOUTH FORK BLACKBIRD 55X

AOD	BW	205D	EPDs	BW	WW	YW	MILK
3	79	724		+1.5	+54	+88	+25



Lot 129

LOT  
130

## 66 BLACK CEDAR 204E

MALE CKM 204E 2008000 APRIL 22 2017

COLE CREEK BLACK CEDAR 1100 1998932

COLE CREEK BLACK CEDAR 46P AMF CAF NHF DDF  
COLE CREEK JUANADA BIRD 38N

66 BARBARA 78C 1867138

SHEIDAGHAN PIONEER 56A  
SOUTH FORK BARBARA 347Z

AOD	BW	205D	EPDs	BW	WW	YW	MILK
3	88	618		+2.7	+44	+83	+24



Lot 131

LOT  
129

## 66 BLACK CEDAR 207E

MALE CKM 207E 2008001 APRIL 22 2017

COLE CREEK BLACK CEDAR 1100 1998932

COLE CREEK BLACK CEDAR 46P AMF CAF NHF DDF  
COLE CREEK JUANADA BIRD 38N

66 ROSEBUD 93C 1867153

S A V REGISTRY 2831 AMF CAF OHF NHF DDF  
SOUTH FORK ROSEBUD 153X

AOD	BW	205D	EPDs	BW	WW	YW	MILK
3	83	704		+2.0	+52	+87	+23

LOT  
131

## 66 BLACK CEDAR 24E

MALE CKM 24E 2007961 APRIL 11 2017

COLE CREEK BLACK CEDAR 1100 1998932

COLE CREEK BLACK CEDAR 46P AMF CAF NHF DDF  
COLE CREEK JUANADA BIRD 38N

66 PRIDE 51C 1867111

66 ALLIANCE 17Z  
SOUTH FORK PRIDE 128Z

AOD	BW	205D	EPDs	BW	WW	YW	MILK
3	80	585		+2.8	+47	+77	+22



Lot 132

LOT 132

### 66 BLACK CEDAR 253E

MALE CKM 253E 2008005 APRIL 24 2017

COLE CREEK BLACK CEDAR 1100 1998932

COLE CREEK BLACK CEDAR 46P AMF CAF NHF DDF  
COLE CREEK JUANADA BIRD 38N

66 BARBARA 354C 1867412

CONNELLY THUNDER AMF CAF OHF NHF DDF  
66 BARBARA 369A

AOD	BW	205D	EPDs	BW	WW	YW	MILK
3	<b>67</b>	561		-1.4	+33	+59	+24



Lot 133

LOT 133

### 66 BLACK CEDAR 87E

MALE CKM 87E 2007982 APRIL 16 2017

COLE CREEK BLACK CEDAR 1100 1998932

COLE CREEK BLACK CEDAR 46P AMF CAF NHF DDF  
COLE CREEK JUANADA BIRD 38N

66 BRIDE 531C 1876635

SOUTH FORK CONVERGENCE 217Y  
DEER RIVER BRIDE 63T CAC

AOD	BW	205D	EPDs	BW	WW	YW	MILK
3	<b>75</b>	608		+1.8	+42	+70	+19



[ LOT 129 ]  
Black Cedar Son

## CALVING EASE BULLS: BW IN **BOLD**

LOT 134

### 66 BLACK CEDAR 84E

MALE CKM 84E 2007980 APRIL 15 2017

COLE CREEK BLACK CEDAR 1100 1998932

COLE CREEK BLACK CEDAR 46P AMF CAF NHF DDF  
COLE CREEK JUANADA BIRD 38N

66 IDELETTE 443C 1867496

BAD LANDS ATTRACTION 109Y  
SOUTH FORK IDELETTE 58Y

AOD	BW	205D	EPDs	BW	WW	YW	MILK
3	<b>75</b>	517		+0.3	+26	+49	+19



Lot 135

LOT 135

### 66 BLACK CEDAR 292E

MALE CKM 292E 2008006 APRIL 25 2017

COLE CREEK BLACK CEDAR 1100 1998932

COLE CREEK BLACK CEDAR 46P AMF CAF NHF DDF  
COLE CREEK JUANADA BIRD 38N

66 BLACKBIRD 5C 1867066

SHEIDAGHAN ANSWER 21A  
SOUTH FORK BLACKBIRD 99Z

AOD	BW	205D	EPDs	BW	WW	YW	MILK
3	<b>72</b>	572		+0.0	+35	+58	+20



Lot 136

LOT 136

### 66 BLACK CEDAR 186E

MALE CKM 186E 2007995 APRIL 21 2017

COLE CREEK BLACK CEDAR 1100 1998932

COLE CREEK BLACK CEDAR 46P AMF CAF NHF DDF  
COLE CREEK JUANADA BIRD 38N

66 MIDDLEBROOK 33C 1867091

66 ALLIANCE 17Z  
SOUTH FORK MIDDLEBROOK 111Z

AOD	BW	205D	EPDs	BW	WW	YW	MILK
3	<b>75</b>	571		+1.8	+47	+80	+19



**REFERENCE  
SIRE**

**66 ALLIANCE 17Z**

CKM 17Z 1677098 MARCH 26 2012

BAD LANDS ALLIANCE 14W 1502297

KMK ALLIANCE 6595 I87 AMF CAF NHF DDF  
BAD LANDS COUNTESS 214M AMF

BAD LANDS GLENELLA 5041R 1270140

LEACHMAN RIGHT TIME DMF AMF  
BAD LANDS GLENELLA 247M

BW: 91 205D: 741 365D: 1215

EPDs	BW	WW	YW	MILK	TM	CE	MCE
	+5.0	+79	+131	+19	+59	-3	+11

Plain and simple, 17Z has it all. Performance, ease of flesh, leg structure, super foot, free moving, maternal. We feel we have lucked out and finally raised one that can compete with any A.I sire. His heifer calves are extremely feminine and by far the top end of the pen. Very moderate birth weights out of 260 calves, 86 lbs. avg. on the bull calves and 77 lbs. avg. on the heifer calves. We find it much easier to have confidence in A.I.'ing to a bull that you know exactly what his sire is and as well his dam. Because they both came from our program.

TWO YEAR OLD SONS SELL AS LOTS 17 - 22



**LOT  
137**

**66 ALLIANCE 7079E**

MALE CKM 7079E 1997627 MAY 09 2017

66 ALLIANCE 17Z 1677098

BAD LANDS ALLIANCE 14W  
BAD LANDS GLENELLA 5041R

SOUTH FORK ANNE 407Z 1677432

BAD LANDS NEW FRONTIER 67W  
BAD LANDS ANNE 60X

AOD	BW	205D	EPDs	BW	WW	YW	MILK
6	97	789		+4.6	+67	+113	+26

**LOT  
138**

**66 ALLIANCE 7012E**

MALE CKM 7012E 1997132 TWIN APRIL 14 2017

66 ALLIANCE 17Z 1677098

BAD LANDS ALLIANCE 14W  
BAD LANDS GLENELLA 5041R

T Z SWEET PEA 4S 1320763

BASIN MAX 602C AMF CAF OHF NHF DDF  
T Z MUZETTE 1M

AOD	BW	205D	EPDs	BW	WW	YW	MILK
12	75	668		+3.9	+53	+95	+17



**LOT  
139**

**66 ALLIANCE 245E**

MALE CKM 245E 1997292 APRIL 23 2017

66 ALLIANCE 17Z 1677098

BAD LANDS ALLIANCE 14W  
BAD LANDS GLENELLA 5041R

DEER RIVER DUCHESS 383T 1382181

DEER RIVER BINGO 137L  
DEER RIVER DUCHESS 141N

AOD	BW	205D	EPDs	BW	WW	YW	MILK
11	95	706		+4.5	+57	+97	+22



**LOT  
140**

**66 ALLIANCE 266E**

MALE CKM 266E 1997312 APRIL 24 2017

66 ALLIANCE 17Z 1677098

BAD LANDS ALLIANCE 14W  
BAD LANDS GLENELLA 5041R

SOUTH FORK ROSETTE 207Z 1708595

BAD LANDS FORTE 16U  
BAD LANDS ROSETTE 8157U

AOD	BW	205D	EPDs	BW	WW	YW	MILK
6	101	688		+5.8	+59	+104	+18

**PERFORMANCE DATA**

AOD: Age of Dam BW: Actual Birth Weight  
205D: Weaning Weight in lbs. adjusted to 205 days  
365D: Yearling Weight in lbs. adjusted to 365 days

Average Black Angus EPDs for all calves born in 2017

EPDs	BW	WW	YW	MILK	TM	CE	MCE
	+2.3	+45	+79	+21	+43	+3.2	+6.9



Lot 141

LOT 141

**66 ALLIANCE 13E**

MALE CKM 13E 1997073 APRIL 09 2017

66 ALLIANCE 17Z 1677098

BAD LANDS ALLIANCE 14W  
BAD LANDS GLENELLA 5041R

66 COUNTESS 262A 1738909

R R DAQUANTAE 789E AMF CAF OHF NHF DDF  
BAD LANDS COUNTESS 35K

AOD	BW	205D	EPDs	BW	WW	YW	MILK
5	<b>69</b>	626		+0.9	+52	+84	+15

LOT 142

**66 ALLIANCE 7072E**

MALE CKM 7072E 1997449 APRIL 30 2017

66 ALLIANCE 17Z 1677098

BAD LANDS ALLIANCE 14W  
BAD LANDS GLENELLA 5041R

SOUTH FORK ZARA 193X 1585236

DEER RIVER CONVERGENCE 68R  
DEER RIVER ZARA 119R

AOD	BW	205D	EPDs	BW	WW	YW	MILK
8	98	650		+4.7	+56	+93	+15



Lot 143

LOT 143

**66 ALLIANCE 305E**

MALE CKM 305E 1997354 APRIL 26 2017

66 ALLIANCE 17Z 1677098

BAD LANDS ALLIANCE 14W  
BAD LANDS GLENELLA 5041R

SOUTH FORK COUNTESS 214Z 1677279

LOOKOUT CANUCK 65U  
BAD LANDS COUNTESS 9017W

AOD	BW	205D	EPDs	BW	WW	YW	MILK
6	86	639		+3.0	+56	+88	+17

LOT 144

**66 ALLIANCE 325E**

MALE CKM 325E 1997370 APRIL 27 2017

66 ALLIANCE 17Z 1677098

BAD LANDS ALLIANCE 14W  
BAD LANDS GLENELLA 5041R

66 PEARL 319A 1738952

COLE CREEK CEDAR RIDGE 1V DMF DWF AMF CAF NHF DDF  
BAD LANDS PEARL 1069Y

AOD	BW	205D	EPDs	BW	WW	YW	MILK
5	90	636		+4.1	+55	+96	+21



3 sons sell

An A.I. sire we used which produces very attractive angus cattle with great curves. Very moderate birth, with perfect feet. Motive's dam is admired for her perfect udder and moderate frame.

REFERENCE SIRE

**SOO LINE MOTIVE 9016**

SOO 16W 1504907 TWIN JANUARY 07 2009

HF KODIAK 5R AMF CAF OHF NHF MAF DDF 1274305

SANDY BAR ADVANTAGE 43M DDF  
WILBAR RUBY 955N

TLA BEAUTY 5R 1296622

RR 7407 RAINMAKER 2154  
TERRLENE BEAUTY 35F

BW: 71 205D: 781 365D: 1354

EPDs	BW	WW	YW	MILK	TM	CE	MCE
	+0.4	+47	+83	+22	+46	+8	-1

LOT 145

**66 MOTIVE 7004E**

MALE CKM 7004E 1997083 APRIL 10 2017

SOO LINE MOTIVE 9016 1504907

HF KODIAK 5R AMF CAF OHF NHF MAF DDF  
TLA BEAUTY 5R

66 IDELETTE 4283B 1815356

SOUTH FORK RITO 2X  
DEER RIVER IDELETTE 555W

AOD	BW	205D	EPDs	BW	WW	YW	MILK
4	84	654		+2.1	+46	+84	+17



Lot 146

LOT 146

**66 MOTIVE 7019E**

MALE CKM 7019E 1997175 APRIL 17 2017

SOO LINE MOTIVE 9016 1504907

HF KODIAK 5R AMF CAF OHF NHF MAF DDF  
TLA BEAUTY 5R

66 BARBARA 369A 1738997

BOYD RESUME 9008 AMF CAF NHF DDF  
DEER RIVER BARBARA 51U

AOD	BW	205D	EPDs	BW	WW	YW	MILK
5	<b>74</b>	619		-0.9	+41	+71	+23

LOT 147

**66 MOTIVE 288E**

MALE CKM 288E 1997336 APRIL 25 2017

SOO LINE MOTIVE 9016 1504907

HF KODIAK 5R AMF CAF OHF NHF MAF DDF  
TLA BEAUTY 5R

66 ZARA 507A 1760850

BAD LANDS FORTE 327X  
BAD LANDS ZARA 9088W

AOD	BW	205D	EPDs	BW	WW	YW	MILK
5	79	559		+0.1	+35	+63	+17



7 sons sell

REFERENCE  
SIRE

## COLE CREEK CEDAR RIDGE 181

IMP 181Y 1715228 FEBRUARY 08 2011

COLE CREEK CEDAR RIDGE 1V DNF DWF AMF CAF NHF DDF 1659099

COLE CREEK BLACK CEDAR 46P AMF CAF NHF DDF  
COLE CREEK CLOVANADA 49S

COLE CREEK JUANADACAP 42P 14496790

HBR ENCORE 0544  
COLE CREEK JUANADA CAP 882

EPDs	BW	WW	YW	MILK	TM	CE	MCE
	+0.9	+25	+62	+37	+50	+9	+7

A walking bull we acquired originating from Cole Creek Angus near Billings Montana. Once again the female side of 181Y is extremely exciting. Could not find a bad foot or udder in their cow herd. Cole Creek Angus bloodlines are extremely attractive if you want your cows to be in your herd for a long time. 181Y calves all demonstrate the extreme ease of flesh their father had.

LOT  
**148**

### 66 CEDAR RIDGE 278E

MALE CKM 278E 1997326 APRIL 25 2017

COLE CREEK CEDAR RIDGE 181 1715228

BAD LANDS LASSIE 7019T 1387785

COLE CREEK CEDAR RIDGE 1V DNF DWF AMF CAF NHF DDF  
COLE CREEK JUANADACAP 42P

KMK ALLIANCE 6595 I87 AMF CAF OHF NHF DDF  
BAD LANDS LASSIE 53K

AOD	BW	205D	EPDs	BW	WW	YW	MILK
11	91	691		+3.3	+43	+77	+31

Lot 149

LOT  
**149**

### 66 CEDAR RIDGE 148E

MALE CKM 148E 1997201 APRIL 19 2017

COLE CREEK CEDAR RIDGE 181 1715228

BAD LANDS LASSIE 127X 1555778

COLE CREEK CEDAR RIDGE 1V DNF DWF AMF CAF NHF DDF  
COLE CREEK JUANADACAP 42P

BAD LANDS FORTE 5S  
BAD LANDS LASSIE 307N

AOD	BW	205D	EPDs	BW	WW	YW	MILK
8	80	677		+0.8	+32	+59	+31

Lot 150

LOT  
**150**

### 66 CEDAR RIDGE 410E

MALE CKM 410E 1997442 APRIL 30 2017

COLE CREEK CEDAR RIDGE 181 1715228

DEER RIVER BLACKBIRD 285U 1487706

COLE CREEK CEDAR RIDGE 1V DNF DWF AMF CAF NHF DDF  
COLE CREEK JUANADACAP 42P

DEER RIVER 317N BASIN 397S  
DEER RIVER BLACKBIRD 177R

AOD	BW	205D	EPDs	BW	WW	YW	MILK
10	86	613		+1.6	+30	+63	+29

Lot 151

LOT  
**151**

### 66 CEDAR RIDGE 104E

MALE CKM 104E 1997161 APRIL 17 2017

COLE CREEK CEDAR RIDGE 181 1715228

BAD LANDS BLACKBIRD 6002S 1321618

COLE CREEK CEDAR RIDGE 1V DNF DWF AMF CAF NHF DDF  
COLE CREEK JUANADACAP 42P

H A IMAGE MAKER 0415 AMF CAF OHF NHF DDF  
BAD LANDS BLACKBIRD 45K

AOD	BW	205D	EPDs	BW	WW	YW	MILK
12	93	639		+1.9	+34	+65	+30

CATALOG & VIDEO ONLINE

at [www.66ranchltd.com](http://www.66ranchltd.com)  
& [www.dvauction.com](http://www.dvauction.com)



*Where Customers  
Become Friends*



**Lot 152**

**LOT  
152**

**66 CEDAR RIDGE 191E**

MALE CKM 191E 1997247 APRIL 21 2017

COLE CREEK CEDAR RIDGE 181 1715228

COLE CREEK CEDAR RIDGE 1V DNF DWF AMF CAF NHF DDF  
COLE CREEK JUANADACAP 42P

SOUTH FORK BLACKBIRD 106Y CAF 1648870

DEER RIVER BANDO 197W CAC  
DEER RIVER BLACKBIRD 150W

AOD	BW	205D	EPDs	BW	WW	YW	MILK
7	<b>68</b>	658		-2.0	+31	+62	+31



**Lot 153**

**LOT  
153**

**66 CEDAR RIDGE 323E**

MALE CKM 323E 1997369 APRIL 27 2017

COLE CREEK CEDAR RIDGE 181 1715228

COLE CREEK CEDAR RIDGE 1V DNF DWF AMF CAF NHF DDF  
COLE CREEK JUANADACAP 42P

66 IDELETTE 230A 1738881

HIGH VALLEY 4C6 AMBUSH AMF CAF  
DEER RIVER IDELETTE 157L

AOD	BW	205D	EPDs	BW	WW	YW	MILK
5	<b>76</b>	669		+0.9	+32	+60	+29



**Lot 154**

**LOT  
154**

**66 CEDAR RIDGE 286E**

MALE CKM 286E 1997334 APRIL 25 2017

COLE CREEK CEDAR RIDGE 181 1715228

COLE CREEK CEDAR RIDGE 1V DNF DWF AMF CAF NHF DDF  
COLE CREEK JUANADACAP 42P

BAD LANDS FANNY 114X 1555749

KBJ ROGUE II 203H  
BAD LANDS FANNY 322N

AOD	BW	205D	EPDs	BW	WW	YW	MILK
8	86	594		+1.7	+26	+55	+27





What a powerful set of bulls Thunderbolt has stamped for us to offer to you. Moderate birth, with explosive growth. Thunderbolt's dam is a broody, super feminine dam, with perfect feet and udder design. Super docile offspring as well.

**REFERENCE  
SIRE**

# BRUNS THUNDERBOLT 963

IMP 963A 1846869 AMF CAF NHF DDF JANUARY 31 2013

MOGCK BULLSEYE AMF CAF OHF NHF DDF 1817308

MOGCK SURE SHOT AMF CAF OHF NHF DDF  
MOGCK MARY 1255

HIGHLAND BARBARA 809 BAF 16537403

CONNELLY THUNDER AMF CAF OHF NHF DDF  
HIGHLAND BARBARA 3263 B A F

EPDs	BW	WW	YW	MILK	TM	CE	MCE
	+3.2	+59	+110	+38	+68	+4	+9



**LOT  
157**

## 66 THUNDERBOLT 7044E

MALE CKM 7044E 1997299 APRIL 23 2017

BRUNS THUNDERBOLT 963 AMF CAF NHF DDF 1846869

MOGCK BULLSEYE AMF CAF OHF NHF DDF  
HIGHLAND BARBARA 809 BAF

DEER RIVER IDELETTE 605U 1466196

DEER RIVER RIGHT TIME 145P  
DEER RIVER IDELETTE 136H

AOD	BW	205D	EPDs	BW	WW	YW	MILK
10	86	627		+3.1	+52	+99	+27

**LOT  
158**

## 66 THUNDERBOLT 7043E

MALE CKM 7043E 1997298 APRIL 23 2017

BRUNS THUNDERBOLT 963 AMF CAF NHF DDF 1846869

MOGCK BULLSEYE AMF CAF OHF NHF DDF  
HIGHLAND BARBARA 809 BAF

66 ZARA 3082A 1755570

DEER RIVER MECHANIC 78U  
SOUTH FORK ZARA 53X

AOD	BW	205D	EPDs	BW	WW	YW	MILK
5	93	652		+3.8	+48	+84	+27



**LOT  
159**

## 66 THUNDERBOLT 7067E

MALE CKM 7067E 1997428 APRIL 29 2017

BRUNS THUNDERBOLT 963 AMF CAF NHF DDF 1846869

MOGCK BULLSEYE AMF CAF OHF NHF DDF  
HIGHLAND BARBARA 809 BAF

66 ANNIE 4062B 1805829

SOUTH FORK RITO 2X  
DEER RIVER ANNIE 467U

AOD	BW	205D	EPDs	BW	WW	YW	MILK
4	92	606		+3.8	+48	+90	+26



**LOT  
155**

## 66 THUNDERBOLT 7039E

MALE CKM 7039E 1997256 APRIL 21 2017

BRUNS THUNDERBOLT 963 AMF CAF NHF DDF 1846869

MOGCK BULLSEYE AMF CAF OHF NHF DDF  
HIGHLAND BARBARA 809 BAF

BAD LANDS LASSIE 100X 1555719

SANDY CREEK INITIATIVE 52T  
BAD LANDS LASSIE 5140R

AOD	BW	205D	EPDs	BW	WW	YW	MILK
8	102	711		+5.4	+59	+103	+31



**LOT  
156**

## 66 THUNDERBOLT 7028E

MALE CKM 7028E 1997212 APRIL 19 2017

BRUNS THUNDERBOLT 963 AMF CAF NHF DDF 1846869

MOGCK BULLSEYE AMF CAF OHF NHF DDF  
HIGHLAND BARBARA 809 BAF

DEER RIVER COUNTESS 242S 1350965

DEER RIVER RIGHT TIME 44P  
DEER RIVER COUNTESS 195N

AOD	BW	205D	EPDs	BW	WW	YW	MILK
12	98	690		+3.5	+49	+86	+29



**REFERENCE  
SIRE**

## S A V RESOURCE 1441

IMP 1441Y 1707295 AMF CAF NHF DDF JANUARY 07 2011

RITO 707 OF IDEAL 3407 7075 13066860

R R RITO 707 AMF CAF OHF NHF DDF  
IDEAL 3407 OF 1418 076

S A V BLACKCAP MAY 4136 CAF 14739095

S A V 8180 TRAVELER 004 DMF DMF AMF CAF OHF NHF OSF DDF  
S A V MAY 2397 CAF

EPDs	BW	WW	YW	MILK	TM	CE	MCE
	+4.2	+70	+133	+18	+53	+0	-2

We've seen Resource at Genex Stud in Billings. A very moderate bull, extra rib x2, and super heel under this bull. We saw them collecting "Resource" and the collection team at Genex said you do not have to worry about Libido; Resource is very easy to collect. We are really looking forward to more progeny off of Resource at the ranch, females calving last spring were perfect uddered. If there is a flaw in Resource progeny we haven't found it yet.

NO BULLS HAVE BEEN SOLD  
PRIOR TO THE SALE



**LOT  
160**

## 66 RESOURCE 289E

MALE CKM 289E 1997337 APRIL 25 2017

S A V RESOURCE 1441 AMF CAF NHF DDF 1707295

RITO 707 OF IDEAL 3407 7075  
S A V BLACKCAP MAY 4136 CAF

66 IDELETTE 301A 1738936

BAD LANDS ALLIANCE 326X  
SOUTH FORK IDELETTE 212Y

AOD	BW	205D	EPDs	BW	WW	YW	MILK
5	100	748		+4.6	+61	+106	+20



**LOT  
161**

## 66 RESOURCE 7056E

MALE CKM 7056E 1997386 APRIL 27 2017

S A V RESOURCE 1441 AMF CAF NHF DDF 1707295

RITO 707 OF IDEAL 3407 7075  
S A V BLACKCAP MAY 4136 CAF

66 ERICA 3053A 1755554

V D A R REALLY WINDY 4097 AMF CAF OHF NHF DDF  
BAD LANDS ERICA 1118Y

AOD	BW	205D	EPDs	BW	WW	YW	MILK
5	84	662		+2.3	+56	+101	+15



**LOT  
162**

## 66 RESOURCE 269E

MALE CKM 269E 1997314 APRIL 24 2017

S A V RESOURCE 1441 AMF CAF NHF DDF 1707295

RITO 707 OF IDEAL 3407 7075  
S A V BLACKCAP MAY 4136 CAF

66 PRIDE 447A 1755622

V D A R REALLY WINDY 4097 AMF CAF OHF NHF DDF  
BAD LANDS PRIDE 1077Y

AOD	BW	205D	EPDs	BW	WW	YW	MILK
5	97	661		+4.2	+61	+112	+14





Lot 163

LOT 163

**66 RESOURCE 261E**

MALE CKM 261E 1997308 APRIL 24 2017

S A V RESOURCE 1441 AMF CAF NHF DDF 1707295

RITO 707 OF IDEAL 3407 7075  
S A V BLACKCAP MAY 4136 CAF

SOUTH FORK ZARA 89Y 1626574

DEER RIVER IMAGE MAKER 195T  
DEER RIVER ZARA 254W NHF

AOD	BW	205D	EPDs	BW	WW	YW	MILK
7	75	632		+0.2	+47	+91	+21



Lot 164

LOT 164

**66 RESOURCE 328E**

MALE CKM 328E 1997372 APRIL 27 2017

S A V RESOURCE 1441 AMF CAF NHF DDF 1707295

RITO 707 OF IDEAL 3407 7075  
S A V BLACKCAP MAY 4136 CAF

SOUTH FORK ROSEBUD 92X 1585331

DEER RIVER SHALOM 270T  
DEER RIVER ROSEBUD 106U

AOD	BW	205D	EPDs	BW	WW	YW	MILK
8	78	582		+2.1	+42	+83	+15



11 sons sell

An A.I. sire raised by Flesch Angus at Shelby, Montana - first calves registered in Canada. Very attractive cattle with great growth and super calving ease. 51 calves registered and bull calves avg. 81 lbs. and heifer calves 74 lbs. out of mostly mature cows. We believe the extreme calving ease is real. Super excited about the female side of Black Gold backed by some super maternal genetics.



Lot 165

LOT 165

**66 BLACK GOLD 209E**

MALE CKM 209E 1999795 APRIL 22 2017

FF BLACK GOLD JF C19 OSF 1998937

CONNELLY BLACK GRANITE AMF CAF NHF OSF DDF  
JF BARBARAMERE Y3

66 IDELETTE 154A 1750259

APEX WINDY 078 AMF CAF OHF NHF OSF DDF  
DEER RIVER IDELETTE 137P

AOD	BW	205D	EPDs	BW	WW	YW	MILK
5	88	655		+0.5	+57	+92	+22

LOT 166

**66 BLACK GOLD 128E**

MALE CKM 128E 1999789 APRIL 18 2017

FF BLACK GOLD JF C19 OSF 1998937

CONNELLY BLACK GRANITE AMF CAF NHF OSF DDF  
JF BARBARAMERE Y3

BAD LANDS BLACKCAP 9005W 1502300

H A IMAGE MAKER 0415 AMF CAF OHF NHF DDF  
BAD LANDS BLACKCAP 121L

AOD	BW	205D	EPDs	BW	WW	YW	MILK
9	81	688		-0.7	+57	+92	+28



Lot 167

LOT 167

**66 BLACK GOLD 381E**

MALE CKM 381E 1999944 APRIL 29 2017

FF BLACK GOLD JF C19 OSF 1998937

CONNELLY BLACK GRANITE AMF CAF NHF OSF DDF  
JF BARBARAMERE Y3

BAD LANDS LADY 8098U 1429205

HILLFIRE LEGACY 422 AMF  
BAD LANDS LADY 4023P

AOD	BW	205D	EPDs	BW	WW	YW	MILK
10	101	670		+5.2	+59	+102	+19

REFERENCE SIRE

**FF BLACK GOLD JF C19**

IMP 19C 1998937 OSF JANUARY 15 2015

CONNELLY BLACK GRANITE AMF CAF NHF OSF DDF 17028963

CONNELLY CONSENSUS 7229 AMF CAF OHF NHF OSF DDF  
EURA ELGA OF CONANGA 9109

JF BARBARAMERE Y3 16986525

CONNELLY RIGHT ANSWER 746 AMF CAF OHF NHF DDF  
JF BARBARAMERE W32

BW: 78

EPDs	BW	WW	YW	MILK	TM	CE	MCE
	-1.6	+69	+112	+25	+60	+17	+16



Lot 168

LOT 168

**66 BLACK GOLD 357E**  
 MALE CKM 357E 1999942 APRIL 28 2017

FF BLACK GOLD JF C19 OSF 1998937

CONNEALY BLACK GRANITE AMF CAF NHF OSF DDF  
 JF BARBARAMERE Y3

SOUTH FORK ROSEBUD 238Y 1626600

DEER RIVER 68 CONVERGENCE 91U  
 DEER RIVER ROSEBUD 479W

AOD	BW	205D	EPDs	BW	WW	YW	MILK
7	90	715		+1.1	+59	+92	+23

LOT 169

**66 BLACK GOLD 387E**  
 MALE CKM 387E 1999947 APRIL 29 2017

FF BLACK GOLD JF C19 OSF 1998937

CONNEALY BLACK GRANITE AMF CAF NHF OSF DDF  
 JF BARBARAMERE Y3

BAD LANDS RIBBON 7077T 1417511

HILLFIRE LEGACY 422 AMF  
 BAD LANDS RIBBON 375N

AOD	BW	205D	EPDs	BW	WW	YW	MILK
11	86	649		+1.7	+56	+92	+20



Lot 170

LOT 170

**66 BLACK GOLD 385E**  
 MALE CKM 385E 1999946 APRIL 29 2017

FF BLACK GOLD JF C19 OSF 1998937

CONNEALY BLACK GRANITE AMF CAF NHF OSF DDF  
 JF BARBARAMERE Y3

BAD LANDS STETSON 1061Y 1615306

H A R B WINDY 702 J H AMF CAF OHF NHF DDF  
 BAD LANDS STETSON 260M AMF

AOD	BW	205D	EPDs	BW	WW	YW	MILK
7	83	672		+0.2	+60	+99	+23



Lot 171

LOT 171

**66 BLACK GOLD 125E**  
 MALE CKM 125E 1999785 APRIL 18 2017

FF BLACK GOLD JF C19 OSF 1998937

CONNEALY BLACK GRANITE AMF CAF NHF OSF DDF  
 JF BARBARAMERE Y3

66 COUNTESS 320A 1762209

V D A R REALLY WINDY 4097 AMF CAF OHF NHF DDF  
 BAD LANDS COUNTESS 1023Y

AOD	BW	205D	EPDs	BW	WW	YW	MILK
5	77	628		-0.3	+56	+91	+18





Lot 172

LOT 172

**66 BLACK GOLD 7024E**

MALE CKM 7024E 1999781 APRIL 17 2017

FF BLACK GOLD JF C19 OSF 1998937

CONNELLY BLACK GRANITE AMF CAF NHF OSF DDF  
JF BARBARAMERE Y3

66 BLACKBIRD 3102A 1755579

SOUTH FORK GAME DAY 87X  
SOUTH FORK BLACKBIRD 1Y AMF

AOD	BW	205D	EPDs	BW	WW	YW	MILK
5	77	627		-0.8	+45	+77	+21

LOT 173

**66 BLACK GOLD 257E**

MALE CKM 257E 1999800 APRIL 24 2017

FF BLACK GOLD JF C19 OSF 1998937

CONNELLY BLACK GRANITE AMF CAF NHF OSF DDF  
JF BARBARAMERE Y3

66 ZARA 387A 1739012

BOYD RESUME 9008 AMF CAF NHF DDF  
DEER RIVER ZARA 651U

AOD	BW	205D	EPDs	BW	WW	YW	MILK
5	72	627		-1.4	+50	+82	+23

LOT 174

**66 BLACK GOLD 113E**

MALE CKM 113E 1999783 APRIL 17 2017

FF BLACK GOLD JF C19 OSF 1998937

CONNELLY BLACK GRANITE AMF CAF NHF OSF DDF  
JF BARBARAMERE Y3

66 BLACKBIRD 541A 1761757

BAD LANDS FORTE 327X  
DEER RIVER BLACKBIRD 224U

AOD	BW	205D	EPDs	BW	WW	YW	MILK
5	70	560		-1.1	+42	+69	+18



Lot 175

LOT 175

**66 BLACK GOLD 267E**

MALE CKM 267E 1999802 APRIL 24 2017

FF BLACK GOLD JF C19 OSF 1998937

CONNELLY BLACK GRANITE AMF CAF NHF OSF DDF  
JF BARBARAMERE Y3

66 LASSIE 538A 1760982

DEER RIVER IMAGE MAKER 231W  
BAD LANDS LASSIE 964J

AOD	BW	205D	EPDs	BW	WW	YW	MILK
5	70	601		-1.5	+46	+70	+18

REFERENCE SIRE

**BAD LANDS ALLIANCE 44T**

CDS 44T 1387816 MARCH 27 2007

KMK ALLIANCE 6595 187 AMF CAF OHF NHF DDF 1191922

SITZ ALLIANCE 6595 DMF AMF CAF OHF NHF DDF  
G A R EXT 916 AMF

BAD LANDS COUNTESS 214M AMF 1120996

HIGH VALLEY 4C6 AMBUSH AMF CAF  
BAD LANDS COUNTESS 442D

BW: 72 205D: 740 365D: 1264

EPDs	BW	WW	YW	MILK	TM	CE	MCE
	-0.5	+39	+57	+19	+39	+10	+12

Early gestation and calving ease with growth and thickness. Awesome temperament. 44T's mother is a proven herd sire maker.

1 son sells

LOT 176

**66 ALLIANCE 102E**

MALE CKM 102E 1997159 APRIL 17 2017

BAD LANDS ALLIANCE 44T 1387816

KMK ALLIANCE 6595 187 AMF CAF OHF NHF DDF  
BAD LANDS COUNTESS 214M AMF

66 DELIA 241C 1867307

V D A R CEDAR WIND 8111  
66 DELIA 34A

AOD	BW	205D	EPDs	BW	WW	YW	MILK
3	70	664		-0.4	+48	+73	+24





**REFERENCE  
SIRE**

**EF COMMANDO 1366**

IMP 1366Y 1887295 OSF DDF AUGUST 25 2011

EF COMPLEMENT 8088 AMF CAF OHF NHF DDF 16198796

BASIN FRANCHISE P142 AMF CAF OHF NHC DDF  
EF EVERELDA ENTENSE 6117

RIVERBEND YOUNG LUCY W1470 DDF 16543240

B/R AMBUSH 28 AMF CAF NHF DDF  
RIVERBEND YOUNG LUCY T1080

EPDs	BW	WW	YW	MILK	TM	CE	MCE
	-0.8	+58	+96	+28	+57	+14	+16

An A.I. sire we used. Genex Semen Sales says a no-miss calving ease sire. With a 60 lb B.W to 673 lb. WW and 991 lb. YW looks to be true. Moderate frame size with very attractive curves.



**LOT  
177**

**66 COMMANDO 334E**

MALE CKM 334E 1997376 APRIL 27 2017

EF COMMANDO 1366 OSF DDF 1887295

EF COMPLEMENT 8088 AMF CAF OHF NHF DDF  
RIVERBEND YOUNG LUCY W1470 DDF

BAD LANDS COUNTESS 122X 1555764

LOOKOUT CANUCK 65U  
BAD LANDS COUNTESS 6046S

AOD	BW	205D	EPDs	BW	WW	YW	MILK
8	95	725		+4.1	+55	+84	+21

**REFERENCE  
SIRE**

**COLE CREEK SEVEN SON 1394**

IMP 1394B 1844692 FEBRUARY 27 2014

COLE CREEK SEVEN SON 67T 15483012

JUANADA 7 OF P J M  
COLE CREEK CLOVANADA 136M

COLE CREEK JUANADALEEN 1240 16723834

COLE CREEK BLACK CEDAR 46P AMF CAF NHF DDF  
COLE CREEK JUANADALEEN 51S

EPDs	BW	WW	YW	MILK	TM	CE	MCE
	+5.5	+41	+85	+25	+46	-5	+4

A walking bull we purchased from Cole Creek Angus in 2015. Goes back on the sire side to some older genetics, Juanada 7 of PJM. On our tour of Cole Creek Angus, Malissa and I were absolutely amazed by the quality of females sired by this Juanada bull. Absolutely impeccable udders on those females. Really excited about 1394B because he sure stamped an incredible set of bull calves for this year's sale. Very impressive!

**7 sons sell**



**LOT  
178**

**66 SEVEN SON 322E**

MALE CKM 322E 1997368 APRIL 27 2017

COLE CREEK SEVEN SON 1394 1844692

COLE CREEK SEVEN SON 67T  
COLE CREEK JUANADALEEN 1240

BAD LANDS BLACKBIRD 1113Y 1615395

NLC FEATURE ATTRACTION 3W  
BAD LANDS BLACKBIRD 6002S

AOD	BW	205D	EPDs	BW	WW	YW	MILK
7	96	652		+4.4	+41	+72	+24



**LOT  
179**

**66 SEVEN SON 56E**

MALE CKM 56E 1997117 APRIL 14 2017

COLE CREEK SEVEN SON 1394 1844692

COLE CREEK SEVEN SON 67T  
COLE CREEK JUANADALEEN 1240

66 PRIDE 121B 1819728

WK BOBCAT DDF  
SOUTH FORK PRIDE 123Z

AOD	BW	205D	EPDs	BW	WW	YW	MILK
4	77	648		+2.3	+46	+84	+22



**Lot 180**

**LOT  
180**

**66 SEVEN SON 118E**

MALE CKM 118E 1997173 APRIL 17 2017

COLE CREEK SEVEN SON 1394 1844692

COLE CREEK SEVEN SON 67T  
COLE CREEK JUANADALEEN 1240

66 COUNTESS 151B 1819732

V D A R REALLY WINDY 4097 AMF CAF OHF NHF DDF  
SOUTH FORK COUNTESS 142Z

AOD	BW	205D	EPDs	BW	WW	YW	MILK
4	86	630		+2.7	+49	+86	+19



**Lot 181**

**LOT  
181**

**66 SEVEN SON 44E**

MALE CKM 44E 1997104 APRIL 13 2017

COLE CREEK SEVEN SON 1394 1844692

COLE CREEK SEVEN SON 67T  
COLE CREEK JUANADALEEN 1240

66 LASSIE 48B 1805731

CONNELLY THUNDER AMF CAF OHF NHF DDF  
BAD LANDS LASSIE 4008P

AOD	BW	205D	EPDs	BW	WW	YW	MILK
4	76	637		+1.7	+43	+77	+22

**LOT  
182**

**66 SEVEN SON 399E**

MALE CKM 399E 1997434 APRIL 30 2017

COLE CREEK SEVEN SON 1394 1844692

COLE CREEK SEVEN SON 67T  
COLE CREEK JUANADALEEN 1240

SOUTH FORK LADY BIRD 337Z 1677372

SINCLAIR EXCELLENCY 5X25 AMF CAF OHF NHF DDF  
DEER RIVER LADY BIRD 497T

AOD	BW	205D	EPDs	BW	WW	YW	MILK
6	97	693		+4.7	+47	+83	+22

**LOT  
183**

**66 SEVEN SON 396E**

MALE CKM 396E 1997431 APRIL 30 2017

COLE CREEK SEVEN SON 1394 1844692

COLE CREEK SEVEN SON 67T  
COLE CREEK JUANADALEEN 1240

66 BLACKBIRD 234A 1738885

HIGH VALLEY 4C6 AMBUSH AMF CAF  
DEER RIVER BLACKBIRD 19N

AOD	BW	205D	EPDs	BW	WW	YW	MILK
5	94	648		+4.8	+44	+83	+20



**Lot 184**

**LOT  
184**

**66 SEVEN SON 347E**

MALE CKM 347E 1997391 APRIL 28 2017

COLE CREEK SEVEN SON 1394 1844692

COLE CREEK SEVEN SON 67T  
COLE CREEK JUANADALEEN 1240

66 ROSEBUD 43B 1819716

66 ALLIANCE 17Z  
SOUTH FORK ROSEBUD 153X

AOD	BW	205D	EPDs	BW	WW	YW	MILK
4	85	690		+3.8	+51	+93	+22

PLEASE JOIN US AFTER THE SALE

FOR AN AMAZING ANGUS STEAK & A LITTLE "COUNTRY HOSPITALITY"



**REFERENCE  
SIRE**

**66 ALLIANCE 437C**

CKM 437C 1877945 MAY 03 2015

66 BAD LANDS ALLIANCE 44T 1387816

KMK ALLIANCE 6595 I87 AMF CAF OHF NHF DDF  
BAD LANDS COUNTESS 214M AMF

66 ROSEBUD 383A 1739008

SOUTH FORK GAME DAY 123X  
SOUTH FORK ROSEBUD 85Y

BW: 62 205D: 735 365D: 1149

EPDs	BW	WW	YW	MILK	TM	CE	MCE
	-2.3	+35	+58	+24	+42	+14	+12

A walking bull raised at 66 Ranch. Another "Sleep All Night" heifer bull. Going back on the sire side to Alliance will make the females the kind you'll want to keep. Bull calves averaged 70 lbs. at birth and the heifer calves average 66 lbs.

**7 sons sell**

**LOT  
185**

**66 ALLIANCE 28E**

MALE CKM 28E 1997089 APRIL 11 2017

66 ALLIANCE 437C 1877945

BAD LANDS ALLIANCE 44T  
66 ROSEBUD 383A

66 LADY 600C 1877321

SOUTH FORK 26L DAQUANTAE 87Z  
BAD LANDS LADY 1106Y

AOD	BW	205D	EPDs	BW	WW	YW	MILK
3	<b>68</b>	556		-0.4	+31	+44	+20



**Lot 186**

**LOT  
186**

**66 ALLIANCE 373E**

MALE CKM 373E 1997414 APRIL 29 2017

66 ALLIANCE 437C 1877945

BAD LANDS ALLIANCE 44T  
66 ROSEBUD 383A

66 COUNTESS 226C 1867291

CONNELLY THUNDER AMF CAF OHF NHF DDF  
66 COUNTESS 57A

AOD	BW	205D	EPDs	BW	WW	YW	MILK
3	<b>58</b>	604		-4.3	+34	+56	+24

**LOT  
187**

**66 ALLIANCE 18E**

MALE CKM 18E 1997077 APRIL 10 2017

66 ALLIANCE 437C 1877945

BAD LANDS ALLIANCE 44T  
66 ROSEBUD 383A

66 ZARA 540C 1876737

BAD LANDS ATTRACTION 109Y  
DEER RIVER ZARA 254W NHF

AOD	BW	205D	EPDs	BW	WW	YW	MILK
3	<b>61</b>	594		-1.9	+33	+56	+21

**LOT  
188**

**66 ALLIANCE 342E**

MALE CKM 342E 1997382 APRIL 27 2017

66 ALLIANCE 437C 1877945

BAD LANDS ALLIANCE 44T  
66 ROSEBUD 383A

66 PRIDE 639C 1867628

BAD LANDS ALLIANCE 326X  
66 PRIDE 447A

AOD	BW	205D	EPDs	BW	WW	YW	MILK
3	<b>71</b>	647		-0.7	+38	+61	+22



**Lot 189**

**LOT  
189**

**66 ALLIANCE 351E**

MALE CKM 351E 1997394 APRIL 28 2017

66 ALLIANCE 437C 1877945

BAD LANDS ALLIANCE 44T  
66 ROSEBUD 383A

66 BLACKLASS 640C 1876634

BAD LANDS ATTRACTION 109Y  
BAD LANDS BLACKLASS 808H

AOD	BW	205D	EPDs	BW	WW	YW	MILK
3	<b>75</b>	550		-0.1	+31	+54	+20



**Lot 190**

**LOT  
190**

**66 ALLIANCE 40E**

MALE CKM 40E 1997101 APRIL 12 2017

66 ALLIANCE 437C 1877945

BAD LANDS ALLIANCE 44T  
66 ROSEBUD 383A

66 BLACKBIRD 35C 1867093

V D A R CEDAR WIND 8111  
66 BLACKBIRD 19A

AOD	BW	205D	EPDs	BW	WW	YW	MILK
3	<b>63</b>	592		-2.0	+41	+64	+22

**LOT  
191**

**66 ALLIANCE 27E**

MALE CKM 27E 1997088 APRIL 11 2017

66 ALLIANCE 437C 1877945

BAD LANDS ALLIANCE 44T  
66 ROSEBUD 383A

66 LULU 648C 1876727

BAD LANDS ATTRACTION 109Y  
WHS LULU 88L

AOD	BW	205D	EPDs	BW	WW	YW	MILK
3	<b>60</b>	568		-2.2	+28	+43	+21

**THANK YOU**

**TO JON LATRACE TRUCKING**

The Latrace Family

*Thanks for the support!*

We want to thank our customers and all who participated in our last bull sale. Your support is greatly appreciated. We look forward to seeing you at our sale. To our new customers, a warm welcome. Whether a bull gets bought or not, we look forward to visiting with all of you after the sale.

*Kelsey, Malissa, Brett and Carter*

## UPCOMING 66 RANCH SALES

### 66 RANCH PAIR SALE

**MAY 11, 2018** at 1:00 pm  
at Bow Slope Shipping, Brooks, AB

Featuring:

**80** 66 Ranch registered 2nd calvers with calves at foot  
- Selling as Commercial -

**35** 66 Ranch registered cows with calves at foot  
- Selling as Commercial -

Plus: **150** fancy black one iron commercial  
1st calvers with calves at foot

For more details contact Kelsey @ 403-362-0672

### FALL BULL & FEMALE SALE

**DECEMBER 7, 2018** at 1:00 pm  
at Southern Alberta Livestock Exchange,  
Fort Macleod, AB

Featuring:

- Coming 2 Year Old Black Angus bulls from our April calving program
- 66 Ranch commercial bred heifers NVB
- 66 Ranch purebred Black Angus bred heifers - Selling as Commercial -

Please email or call for details.

Kelsey: 403-362-0672 email: 66@66ranchltd.com

## TERMS & CONDITIONS

**TERMS** - TERMS OF THIS SALE ARE CASH OR CHEQUE PAYABLE IN CANADIAN FUNDS. THE RIGHT TO PROPERTY SHALL NOT PASS UNTIL AFTER SETTLEMENT HAS BEEN MADE. ALL SETTLEMENTS MUST BE MADE WITH THE CLERKS OF THE SALE BEFORE CATTLE WILL BE RELEASED.

**BIDS** - EVERY ANIMAL ENTERING THE RING WILL BE SOLD TO THE HIGHEST BIDDER; AUCTIONEER'S DECISION WILL BE FINAL.

**PURCHASERS RISK** - EACH ANIMAL BECOMES THE RISK OF THE PURCHASER AS SOON AS SOLD. INSURANCE WILL BE AVAILABLE SALE DAY.

**CATTLE INSPECTION** - ALL CATTLE WILL CARRY IDENTIFICATION TAGS CORRESPONDING TO SALE LOT NUMBERS THEY ALSO WILL HAVE R.F.I.D. TAGS.

**ANNOUNCEMENTS** - ERRORS OR OMISSIONS IN THE CATALOG WILL BE ANNOUNCED BEFORE SALE AND ANY CORRECTIONS WILL TAKE PRECEDENCE OVER PRINTED MATTER IN THE CATALOG.

**BREEDING GUARANTEE** - ALL CATTLE ARE SOUND AND RIGHT AND SELL WITH "RESPONSIBLE BREEDER GUARANTEE AND SATISFACTION". IN THE EVENT OF AN UNLIKELY DISPUTE, THE REGULAR TERMS AND CONDITIONS STANDARD WITH THE CANADIAN ABERDEEN ANGUS ASSOCIATION SHALL APPLY. IN ANY CASE, THE SELLER IS NOT RESPONSIBLE FOR MORE THAN THE PRICE THE BULL WAS DECLARED SOLD FOR ON SALE DAY.

**ACCIDENTS** - ANY PERSON ATTENDING THE SALE DOES SO AT THEIR OWN RISK AND RECOGNIZES THAT THERE ARE INHERENT DANGERS. ALTHOUGH EVERY PRECAUTION WILL BE TAKEN TO PROTECT THE SAFETY AND COMFORT OF BUYERS, NEITHER THE SALES MANAGER, AUCTIONEER NOR ANY OWNER ASSUMES ANY RESPONSIBILITY IN THIS MATTER AND DISCLAIMS ANY LIABILITY, LEGAL OR OTHERWISE, IN THE EVENT OF AN ACCIDENT OR LOSS OF PROPERTY.

**LIABILITY** - PURCHASERS MUST LOOK TO THE SELLER OF ANIMAL FOR FULFILLMENT OF ALL GUARANTEES AND REPRESENTATIONS MADE HEREUNDER. SOUTHERN ALBERTA LIVESTOCK EXCHANGE ARE ACTING AS AGENTS AND ASSUME NO RESPONSIBILITY FOR REPRESENTATIONS MADE BY THE SELLER.

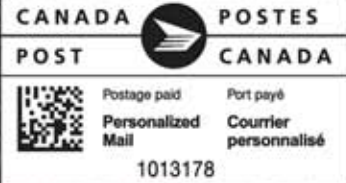
**PHONE, MAIL OR SIGHT UNSEEN BIDS** - ALL BIDS WILL BE IN COMPLETE CONFIDENCE WITH SALES STAFF LISTED OR OWNERS.



66 RANCH LTD.

BOX 66

DUCHESS, AB T0J 0Z0



RETURN POSTAGE GUARANTEED  
PORT DE RETOUR GARANTI

# 66 RANCH LTD.

*7th Annual*

**\* NEW DATE \***

# BULL SALE



*Herd run under  
strict range conditions*

[www.66RanchLtd.com](http://www.66RanchLtd.com)

1 PM THURSDAY

**APRIL 26 2018**

Southern Alberta Livestock Exchange, Fort Macleod, Alberta