

66 RANCH · LTD ·

7th Annual

Fall

BULL SALE

1 PM WEDNESDAY

DECEMBER 9

Bow Slope Shipping Association 2020
Brooks, Alberta

- 49** Long Yearling Purebred Black Angus Bulls
- 60** Fancy Black Angus 2nd Calvers NVB
- 56** 66 Ranch Purebred Black Angus
Bred Heifers - *Selling as Commercials*
- 100** Very Fancy 66 Ranch Black Angus
Commercial Bred Heifers NVB

Welcome



Welcome to our 7th Annual Fall Bull & Female Sale. We would like to Thank You, our past customers, for showing interest in our livestock and our program. And as well, any of you new to our program, thanks for taking the time to come and evaluate our livestock.

What an interesting past 8 months we have had to live through. Everything is strange, new, and different. But the only thing I noticed this spring when I was out with the cows calving, life was normal again. We are all really fortunate in the cattle business to have some normality when we are doing what we do, raising beef. All though I must say, some of those good black momma cows didn't get the memo on what social distancing was.

This fall on offer we will have 49 bulls from our April/May calving program. We held back 4 or 5 complete sire groups from our spring bull sale to be able to bring a strong set of bulls to this sale. Once again, we use May 10th as a cut off for any bulls born after that are saved for our 2 year old program, which are offered at our Spring Sale. Also new this year with our videos online, we took the time to photo all the feet of the bulls on offer. We felt this was a must with the new times and people using the online videos as a way to select some of their new sires. You can find the videos at www.66ranchltd.com

The females that we have selected for this sale consist of 56 bred purebred heifers selling as commercials. As well as 100 fancy 66 Ranch Black Angus bred commercial heifers. This year we have also decided to bring 55 fancy Black Angus commercial 2nd calvers. All the purebred heifers were A.l'ed for one full cycle and a walking bull exposed for one cycle. We started A.l'ing the heifers July 14th. The commercial heifers were all exposed to walking bulls July 10th for just 2 cycles (42 days). The 2nd calvers were exposed to walking bulls July 15th. The 2nd calvers are NVB, the commercial heifers are NVB and our purebred heifers carry our traditional 66 freeze brand. All these females on offer are bred to easy calving bulls and are expected to be turned out just like a cows is and calve on their own, unassisted.

Whether you need to purchase any bulls or females for replacements for your herd, or you are just interested in viewing our cattle for the first time. We would really appreciate it if you could join us after the sale for an evening of socializing and a little "country hospitality!" with proper social distancing in effect of course!

Thanks

Kelsey, Malissa, Brett and Carter





7th Annual

Fall

BULL SALE

WEDNESDAY, DECEMBER 9, 2020

1 pm at Bow Slope Shipping Association
Brooks, Alberta

Offering

49 Long Yearling Purebred Black Angus Bulls

Commercial Females

60 Fancy Black Angus Commercial 2nd Calvers NVB

56 66 Ranch Purebred Black Angus Bred Heifers
Selling as Commercials

**100 Very Fancy 66 Ranch Black Angus
Commercial Bred Heifers NVB**

All females bred A.I. &/or exposed & preg checked safe

- FEMALES SELL FOLLOWING THE BULLS -

AUCTIONEER: Frank Jenkins - 403-627-6700

SALE STAFF: Bow Slope Shipping Association

Lachie McKinnon - 403-362-1825

Erik Christensen - 403-363-9942

Cole Webb - 403-793-5387

66 RANCH LTD.

**Kelsey & Malissa
Campbell & Family**

Box 66, Duchess, AB T0J 0Z0

Kelsey - 403-362-0672

Malissa - 403-501-9358

email: 66@66ranchltd.com

www.66ranchltd.com



Malissa & Kelsey, Carter & Brett

**ONLINE
BIDDING @
dvauction.com**

DETAILS PAGE 2

SALE DAY PHONES

AUCTION MART 403-362-5521

KELSEY'S CELL 403-362-0672

MALISSA'S CELL 403-501-9358

ACCOMMODATIONS:

Heritage Inn & Suites 403-362-8688
Ramada 403-362-6440

VIEWING: Bulls will be available for viewing at Bow Slope Shipping Association, on Tuesday, December 8.

PURCHASES RISK: Each animal becomes the risk of the purchaser as soon as sold. Insurance will be available sale day with Canadian Farm Insurance - Kolton Kasur 780-387-8376.

BREEDER'S GUARANTEE: All the bulls will be semen tested and physically examined by our local vet and sold with a breeders guarantee. **EVERY BULL at the sale will be sold with a 100% satisfaction guarantee.**

SIGHT UNSEEN: In the event you are unable to attend the sale or use the online option, bids can be given to sale staff or owners with satisfaction guaranteed.

**COMING TWO YEAR OLD BULLS AND FEMALES
ARE TO GO RIGHT AFTER THE SALE!!!**

CAN'T MAKE IT ON SALE DAY?

Our sale will now be broadcast online @

DVAuction
www.dvauction.com

We are pleased to announce that we will have the services of DVAuction. This will allow you to bid on the bulls and heifers via the internet. Of course, we would rather you attend the sale and our hospitality afterwards, but we well know today's world just keeps getting busier and busier! But, if for some reason you cannot attend, this gives you the opportunity to bid on the bulls and heifers at the live auction. Please remember to pre-register at www.dvauction.com 24 hrs. prior to the sale.

We also have available with this service is a live video of every animal in the sale. To view these videos go to our website www.66ranchltd.com and just click on view catalog. Videos are also available at www.dvauction.com. We encourage you if possible to view the cattle at the ranch prior to the sale.

Please contact Kelsey @ 403-362-0672, Malissa @ 403-501-9358 or Sarah @ 306-681-5340 with any questions or issues with registering for the sale.





PERFORMANCE DATA

AOD: Age of Dam

BW: Actual Birth Weight

205D: Weaning weight in lbs. adjusted to 205 days

365D: Yearling weight in lbs. adjusted to 365 days

EPD EXPLANATION

BW: Birth weight, a prediction of a sire's ability to transmit birth weight to his progeny

WW: Weaning weight, predictor of a sire's ability to transmit weaning growth to his progeny

YW: Yearling weight, predictor of a sire's ability to transmit yearling growth to his progeny

MILK: A predictor of a sire's genetic merit for milk and mothering ability as expressed in his daughters

The 2020 Black Angus Average EPDs are as follows and are the numbers to compare the bulls in the catalog to:

EPDs	BW	WW	YW	MILK	TM	CE	MCE
	+2.1	+47	+83	+22	+44	+3.4	+7.1

EPDs in this catalog are as of Oct. 29/19

PLEASE NOTE:

- No bulls have been sold prior to the sale
- Bulls are sold in catalog order
- Heifers and 2nd Calvers sold at the end of the sale
- Updated weights & scrotal measurements will be available Sale Day
- 66 Ranch reserves the right to draw 250 straws of semen at our expense and at your convenience on any bull selling in the sale. For in-herd use only.

CALVING EASE BULLS: BW IN **BOLD**



REFERENCE SIRE



S A V RESOURCE 1441

MALE IMP 1441Y † 1707295 JANUARY 07 2011

RITO 707 OF IDEAL 3407 7075 † 2069908

R R RITO 707 DWF †
IDEAL 3407 OF 1418 076

S A V BLACKCAP MAY 4136 † 14739095

S A V 8180 TRAVELER 004 †
S A V MAY 2397 †

EPDs	BW	WW	YW	MILK	CE	MCE
	+4.1	+69	+132	+18	+1.0	+0.0

We've seen Resource at Genex Stud in Billings. A very moderate bull, extra rib x2, and super heel under this bull. We saw them collecting "Resource" and the collection team at Genex said you do not have to worry about libido; Resource is very easy to collect. We are really looking forward to more progeny off of Resource at the ranch, females calving last spring were perfect uddered. If there is a flaw in Resource progeny we haven't found it yet.

† Indicates at least 1 genetic condition test with a free result



LOT
1

66 RESOURCE 444G

MALE CKM 444G 2121624 MAY 06 2019

S A V RESOURCE 1441 † 1707295

RITO 707 OF IDEAL 3407 7075 †
S A V BLACKCAP MAY 4136 †

HD JESTRESS 3505A 1844498

BAD LANDS ALLIANCE 14W
TAYLOR MADE GEORGIA RAIN 505R

AOD	BW	205D	365D	EPDs	BW	WW	YW	MILK
7	96	646	1221		+5.1	+59	+111	+17

BULLS SELL IN CATALOG ORDER



Lot 2

**LOT
2**

66 RESOURCE 395G
 MALE CKM 395G 2121594 MAY 03 2019

S A V RESOURCE 1441 † 1707295

RITO 707 OF IDEAL 3407 7075 †
 S A V BLACKCAP MAY 4136 †

BAD LANDS DUCHESS 1000Y 1615224

BAD LANDS ALLIANCE 44T
 BAD LANDS DUCHESS 7027T

AOD	BW	205D	365D	EPDs	BW	WW	YW	MILK
9	86	682	1202		+2.2	+57	+106	+18



1000Y
 DAM OF
 LOT 2



3505A
 DAM OF
 LOT 1

BULL MANAGEMENT

We do not believe in pushing
 our long yearling bulls.

They are all carefully grown into herd sires.



**LOT
3**

66 RESOURCE 447G

MALE CKM 447G 2121626 MAY 06 2019

S A V RESOURCE 1441 † 1707295

RITO 707 OF IDEAL 3407 7075 †
S A V BLACKCAP MAY 4136 †

66 IDELETTE 40C 1867099

BAD LANDS ATTRACTION 109Y
DEER RIVER IDELETTE 393S

AOD	BW	205D	365D	EPDs	BW	WW	YW	MILK
5	84	589	1078		+1.4	+47	+89	+14



40C
DAM OF
LOT 3

AOD = AGE OF DAM

NEWELL VETERINARY CLINIC

The bulls offered for sale by 66 Ranch have all passed a breeding soundness examination and are classified as satisfactory potential breeders.

The heifers and 2nd calvers have all been examined to confirm pregnancy.

In my opinion the Angus seed stock offered for sale are in excellent health and in ideal body condition.

I consider this offering to be very good replacement stock for the commercial or purebred herd.

*Sincerely,
Kirby Finkbeiner, DVM*

REFERENCE SIRE



4 sons sell

BASIN PAYWEIGHT 1682

MALE IMP 1682Y † 2010588 FEBRUARY 11 2011

BASIN PAYWEIGHT 006S † 15332050

VERMILION PAYWEIGHT J847 †
BASIN LUCY 3829 †

21AR O LASS 7017 15875998

HARB PENDLETON 765 J H †
21AR O LASS F24A

EPDs	BW	WW	YW	MILK	CE	MCE
+0.6	+67	+119	+31	+7.0	+9.0	

An A.I. sire with calving ease and powerful performance. These Payweight cattle are extremely easy fleshing with real thick top lines. Super attractive cattle, especially in our female pen. Loads of middle and extremely feminine!



Lot 4

LOT
4

66 PAYWEIGHT 9027G

MALE CKM 9027G 2119638 APRIL 29 2019

BASIN PAYWEIGHT 1682 † 2010588

BASIN PAYWEIGHT 006S †
21AR O LASS 7017

BAD LANDS LASSIE 100X 1555719

SANDY CREEK INITIATIVE 52T
BAD LANDS LASSIE 5140R

AOD	BW	205D	365D	EPDs	BW	WW	YW	MILK
10	85	724	1195	+2.0	+59	+98	+30	

100X
DAM OF
LOT 4





**LOT
5**

66 PAYWEIGHT 254G

MALE CKM 254G 2119618 APRIL 27 2019

BASIN PAYWEIGHT 1682 † 2010588

BASIN PAYWEIGHT 006S †
21AR O LASS 7017

66 BLACKBIRD 563C 1867587

BAD LANDS FINAL ANSWER 107W
BAD LANDS BLACKBIRD 164X

AOD	BW	205D	365D	EPDs	BW	WW	YW	MILK
5	76	575	1111		+0.7	+51	+87	+20



**LOT
6**

66 PAYWEIGHT 432G

MALE CKM 432G 2121620 MAY 05 2019

BASIN PAYWEIGHT 1682 † 2010588

BASIN PAYWEIGHT 006S †
21AR O LASS 7017

66 BB BLOSSOM 511A 1760855

BAD LANDS FORTE 16U
BAD LANDS BB BLOSSOM 4067P

AOD	BW	205D	365D	EPDs	BW	WW	YW	MILK
7	63	684	1099		-2.9	+46	+75	+26

NEW THIS YEAR!

Feet photos for sale bulls
with the online videos at
www.66ranchltd.com

5055C
DAM OF
LOT 7



LOT
7

66 PAYWEIGHT 9046G

MALE CKM 9046G 2121607 MAY 03 2019

BASIN PAYWEIGHT 1682 † 2010588

BASIN PAYWEIGHT 006S †
21AR O LASS 7017

66 IDELETTE 5055C 1867391

SOUTH FORK DAKOTA GOLD 173Z
66 IDELETTE 3017A

AOD	BW	205D	365D	EPDs	BW	WW	YW	MILK
5	86	556	1098		+0.1	+42	+81	+23

ALL BULLS SEMEN TESTED

& breeding soundness evaluated

SIRES REPRESENTED

in this catalog

S A V RESOURCE 1441
 BASIN PAYWEIGHT 1682
 WERNER FLAT TOP 4136
 66 ALLIANCE 17Z
 66 RIGHT TIME 326D
 SHIPWHEEL CHINOOK
 66 BOBCAT 271B
 SOUTH FORK CONVERGENCE 217Y
 F-R 9298 5195
 S A V SUPERCHARGER 6813
 S A V RENOWN 3439
 CONNEALY THUNDER
 STUART CHISM 82A
 WCC RESOURCE 406D
 COLE CREEK CEDAR 1346D
 66 CEDAR WIND 178C
 66 SEVEN SON 26D
 HOOVER DAM
 COLE CREEK RIDGE LINE 216D
 V D A R CEDAR WIND 8111
 HILLTOP TRUE GRIT 9202
 66 THUNDER 90B

REFERENCE SIRE



2 sons sell

WERNER FLAT TOP 4136

MALE IMP 4136B † 2013654 SEPTEMBER 07 2014

CONNEALY BLACK GRANITE † 17028963

CONNEALY CONSENSUS 7229 † †
EURA ELGA OF CONANGA 9109

WERNER LADY 0304 16919376

C R A BEXTOR 872 5205 608 †
SANDPOINT LADY 7869 †

EPDs	BW	WW	YW	MILK	CE	MCE
	-2.0	+53	+113	+35	+16.0	+14.0

An A.I. sire we chose to use for moderate birth weight and the added performance once the calves are on the ground. A pedigree stacked with excellent females, should give you the females that we are all striving to produce.



Lot 8

LOT
8

66 FLAT TOP 9024G

MALE CKM 9024G 2119628 APRIL 28 2019

WERNER FLAT TOP 4136 † 2013654

CONNEALY BLACK GRANITE †
WERNER LADY 0304

66 PRINCESS 3084A 1755572

COLE CREEK CEDAR RIDGE 1V †
BAD LANDS PRINCESS 1035Y

AOD	BW	205D	365D	EPDs	BW	WW	YW	MILK
7	92	765	1178		+1.1	+52	+91	+32



3084A

DAM OF
LOT 8



**LOT
9**

66 FLAT TOP 9041G
 MALE CKM 9041G 2125189 MAY 01 2019

WERNER FLAT TOP 4136 † 2013654

CONNEALY BLACK GRANITE †
 WERNER LADY 0304

66 DUCHESS 5046C 1877311

DEER RIVER IMAGE MAKER 231W
 SOUTH FORK DUCHESS 168X

AOD	BW	205D	365D	EPDs	BW	WW	YW	MILK
5	85	560	1080		+1.9	+42	+84	+22



REFERENCE SIRE



3 sons sell

66 ALLIANCE 17Z

MALE CKM 17Z 1677098 MARCH 26 2012

BAD LANDS ALLIANCE 14W 1502297

KMK ALLIANCE 6595 187 †
BAD LANDS COUNTESS 214M †

BAD LANDS GLENELLA 5041R 1270140

LEACHMAN RIGHT TIME †
BAD LANDS GLENELLA 247M

EPDs	BW	WW	YW	MILK	CE	MCE
	+4.6	+82	+131	+20	-1.0	+13.0

BW: 91 205D: 741 365D: 1215

Plain and simple, 17Z has it all. Performance, ease of flesh, leg structure, super foot, free moving, maternal. We feel we have lucked out and finally raised one that can compete with any A.I. sire. His heifer calves are extremely feminine and by far the top end of the pen. Very moderate birth weights out of 377 calves, 86 lbs. avg. on the bull calves and 77 lbs. avg. on the heifer calves. We find it much easier to have confidence in A.I.'ing to a bull that you know exactly what his sire is and as well his dam. Because they both came from our program.



Lot 10

LOT
10

66 ALLIANCE 372G

MALE CKM 372G 2121553 MAY 02 2019

66 ALLIANCE 17Z 1677098

BAD LANDS ALLIANCE 14W
BAD LANDS GLENELLA 5041R

66 BLACKCAP 6C 1867067

COLE CREEK CEDAR RIDGE 181
SOUTH FORK BLACKCAP 497Z

AOD	BW	205D	365D	EPDs	BW	WW	YW	MILK
5	77	677	1170		+1.8	+59	+95	+22



Lot 11

LOT 11

66 ALLIANCE 358G

MALE CKM 358G 2119669 MAY 01 2019

66 ALLIANCE 17Z 1677098

BAD LANDS ALLIANCE 14W
BAD LANDS GLENELLA 5041R

66 BLACKCLASS 640C 1876634

BAD LANDS ATTRACTION 109Y
BAD LANDS BLACKCLASS 808H

AOD	BW	205D	365D	EPDs	BW	WW	YW	MILK
5	76	674	1243		+1.9	+61	+107	+18

640C
DAM OF
LOT 11



6C
DAM OF
LOT 10





**LOT
12**

66 ALLIANCE 514G

MALE CKM 514G 2125193 MAY 10 2019

66 ALLIANCE 17Z 1677098

BAD LANDS ALLIANCE 14W
BAD LANDS GLENELLA 5041R

66 BLACKBIRD 262C 1867325

CONNELY THUNDER †
66 BLACKBIRD 237A

AOD	BW	205D	365D	EPDs	BW	WW	YW	MILK
5	80	717	1182		+1.2	+62	+96	+22



1044Y

DAM OF
66
RIGHT
TIME
326D

REFERENCE SIRE

66 RIGHT TIME 326D

MALE CKM 326D 1937174 APRIL 25 2016

LEACHMAN RIGHT TIME † 779510

N BAR EMULATION EXT †
LEACHMAN ERICA 0025

BAD LANDS LASSIE 1044Y 1655922

BAD LANDS ALLIANCE 14W
BAD LANDS LASSIE 5124R

EPDs	BW	WW	YW	MILK	CE	MCE
	+1.3	+64	+84	+21	+2.0	+9.0

BW: 84 205D: 717 365D: 1143

A walking bull raised at 66 Ranch. What a maternal powerhouse!! Leachman Right Time on top and the dam is one of the best Alliance bred females at the Ranch. Longevity from the Right Time, we have Right Time cows last until 17 years old at our place. The Alliance will give you the perfect udders you are looking for as well as the extreme docility we all like. The neat thing with Alliance bred into the Right Time, is this sire has great scrotal, and passes it onto his progeny.

2 sons sell

† Indicates at least 1 genetic condition test with a free result

**LOT
13**

66 RIGHT TIME 518G

MALE CKM 518G 2112899 MAY 10 2019

66 RIGHT TIME 326D 1937174

LEACHMAN RIGHT TIME †
BAD LANDS LASSIE 1044Y

66 LASSIE 81A 1738770

COLE CREEK CEDAR RIDGE 1V †
BAD LANDS LASSIE 9118W

AOD	BW	205D	365D	EPDs	BW	WW	YW	MILK
7	80	788	1143		-0.2	+56	+70	+28



81A

DAM OF
LOT 13

SIGHT UNSEEN PURCHASES

Your satisfaction is guaranteed

Contact 66 Ranch or any of our Sale Staff



Lot 14

**LOT
14**

66 RIGHT TIME 482G

MALE CKM 482G 2112892 MAY 09 2019

66 RIGHT TIME 326D 1937174

LEACHMAN RIGHT TIME †
BAD LANDS LASSIE 1044Y

BAD LANDS GAY MATILDA 331N 1172298

BAD LANDS WIDESPREAD 17J †
BAD LANDS GAY MATILDA 423D

AOD	BW	205D	365D	EPDs	BW	WW	YW	MILK
17	71	673	1078		+0.1	+49	+59	+16

331N

DAM OF
LOT 14



REFERENCE SIRE



3 sons sell

SHIPWHEEL CHINOOK

MALE IMP 7700T † 1582467 FEBRUARY 06 2007

H A IMAGE MAKER 0415 † 1195032

HERO 6267 OF R R 2418 †
H A RITO BLACKCAP 9038

APEX ERISKAY 5506 15252929

MYTTY IN FOCUS †
APEXETTE ERISKAY 3032

EPDs	BW	WW	YW	MILK	CE	MCE
	-2.1	+53	+87	+24	+15.0	+16.0

Calving ease, femininity and depth of body. A real "cow mans" kind of bull. We are very impressed with this A.I. sire. If you want to put some middle in your cattle, make sure you check out the Chinook sons on offer.



Lot 15

LOT
15

66 CHINOOK 346G

MALE CKM 346G 2119657 MAY 01 2019

SHIPWHEEL CHINOOK † 1582467

H A IMAGE MAKER 0415 †
APEX ERISKAY 5506

BAD LANDS LADY 8098U 1429205

HILLFIRE LEGACY 422 †
BAD LANDS LADY 4023P

AOD	BW	205D	365D	EPDs	BW	WW	YW	MILK
12	92	716	1236		+4.0	+56	+99	+21



8098U

DAM OF
LOT 15

LOT
16

66 CHINOOK 404G

MALE CKM 404G 2121609 MAY 04 2019

SHIPWHEEL CHINOOK † 1582467

H A IMAGE MAKER 0415 †
APEX ERISKAY 5506

66 MIDDLEBROOK 608C 1876729

DELAR MOTIVATED 37A
SOUTH FORK MIDDLEBROOK 111Y

AOD	BW	205D	365D	EPDs	BW	WW	YW	MILK
5	93	769	1259		+2.8	+62	+100	+25



LOT
17

66 CHINOOK 493G

MALE CKM 493G 2121817 MAY 09 2019

SHIPWHEEL CHINOOK † 1582467

H A IMAGE MAKER 0415 †
APEX ERISKAY 5506

66 BLACKBIRD 644C 1876632

BAD LANDS ATTRACTION 109Y
SOUTH FORK BLACKBIRD 129X

AOD	BW	205D	365D	EPDs	BW	WW	YW	MILK
5	77	455	986		-0.5	+27	+56	+19

COME FOR THE CATTLE & *stay for a steak!*



Threw my shovel away but the
pivot just wouldn't let go of it!

REFERENCE SIRE

66 BOBCAT 271B

MALE CKM 271B 1819742 APRIL 20 2014

WK BOBCAT † 1655479

CONNELLY RIGHT ANSWER 746 †
WK MISS ANGUS 7127

SOUTH FORK LASSIE 13Z 1677095

HIGH VALLEY 4C6 AMBUSH †
BAD LANDS LASSIE 4008P

EPDs	BW	WW	YW	MILK	CE	MCE
	+1.3	+53	+82	+23	+10.0	+13.0

BW: 67 205D: 659 365D: 1134

A walking bull at the ranch raised by us. A Bobcat bred son which will give you the females you want with perfect udder structure, ease of flesh and with a moderate birthweight that can go either on the heifers or the growth that will let you use them on the cows too.

7 sons sell



Lot 18

LOT 18

66 BOBCAT 158G

MALE CKM 158G 2112861 APRIL 22 2019

66 BOBCAT 271B 1819742

WK BOBCAT †
SOUTH FORK LASSIE 13Z

66 ROSEBUD 127D 1930064

COLE CREEK SEVEN SON 1394
SOUTH FORK ROSEBUD 51X

AOD	BW	205D	365D	EPDs	BW	WW	YW	MILK
4	79	617	1164		+1.8	+45	+82	+19

LOT 19

66 BOBCAT 9033G

MALE CKM 9033G 2112879 APRIL 30 2019

66 BOBCAT 271B 1819742

WK BOBCAT †
SOUTH FORK LASSIE 13Z

66 ZARA 6003D 1929951

DELAR MOTIVATED 37A
66 ZARA 507A

AOD	BW	205D	365D	EPDs	BW	WW	YW	MILK
4	74	712	1135		-1.3	+51	+76	+22



6003D

DAM OF LOT 19



**LOT
20**

66 BOBCAT 9025G

MALE CKM 9025G 2112875 APRIL 29 2019

66 BOBCAT 271B 1819742

WK BOBCAT †
SOUTH FORK LASSIE 13Z

66 HAPPENINGS 6001D 1935968

SOUTH FORK DESIRE 214Y
66 HAPPENINGS 382A

AOD	BW	205D	365D	EPDs	BW	WW	YW	MILK
4	85	681	1134		+1.3	+46	+73	+23



**LOT
21**

66 BOBCAT 203G

MALE CKM 203G 2112868 APRIL 25 2019

66 BOBCAT 271B 1819742

WK BOBCAT †
SOUTH FORK LASSIE 13Z

66 BARBARA 489D 1930399

66 THUNDER 308A
66 BARBARA 489B

AOD	BW	205D	365D	EPDs	BW	WW	YW	MILK
4	86	723	1164		+1.2	+55	+84	+24





**LOT
22**

66 BOBCAT 9042G

MALE CKM 9042G 2112882 MAY 02 2019

66 BOBCAT 271B 1819742

WK BOBCAT †
SOUTH FORK LASSIE 13Z

66 ZARA 6004D 1935997

SOUTH FORK DESIRE 214Y
66 ZARA 3082A

AOD	BW	205D	365D	EPDs	BW	WW	YW	MILK
4	74	668	1108		+0.3	+47	+68	+20

CALVING EASE BULLS BW IN **BOLD**



**LOT
23**

66 BOBCAT 26G

MALE CKM 26G 2112835 APRIL 14 2019

66 BOBCAT 271B 1819742

WK BOBCAT †
SOUTH FORK LASSIE 13Z

66 ROSETTE 188D 1930124

SOUTH FORK 26L DAQUANTAE 87Z
BAD LANDS ROSETTE 8110U

AOD	BW	205D	365D	EPDs	BW	WW	YW	MILK
4	72	603	1035		-0.5	+39	+56	+24



188D

DAM OF
LOT 23



Lot 24

LOT 24

66 BOBCAT 9056G

MALE CKM 9056G 2112900 MAY 10 2019

66 BOBCAT 271B 1819742

WK BOBCAT †
SOUTH FORK LASSIE 13Z

66 ESTHER 6047D 1930166

66 THUNDER 308A
66 ESTHER 4039B

AOD	BW	205D	365D	EPDs	BW	WW	YW	MILK
4	71	656	1106		-0.9	+44	+71	+23



TIED UP SALE DAY?

NO PROBLEM!

WATCH LIVE & BID ONLINE

DVAuction
www.dvauction.com

REFERENCE SIRE



2 sons sell

SOUTH FORK CONVERGENCE 217Y

MALE CKM 217Y 1640413 MAY 01 2011

DEER RIVER CONVERGENCE 68R 1273347

G A R EVAS CONVERGENCE 3403 †
WILLABAR COUNTESS 248F

DEER RIVER BLACKBIRD 161T 1396618

H A IMAGE MAKER 0415 †
DEER RIVER BLACKBIRD 95R

EPDs	BW	WW	YW	MILK	CE	MCE
	+5.3	+65	+101	+16	-2.0	+8.0

BW: 94 205D: 759 365D: 1138

Deep, thick, wide, square. As some locals would say a real "meat wagon." Going back on 217Y's sire side, is a proven herd sire of ours that produces excellent females.



Lot 25

LOT
25

66 CONVERGENCE 426G

MALE CKM 426G 2121617 MAY 05 2019

SOUTH FORK CONVERGENCE 217Y 1640413

DEER RIVER CONVERGENCE 68R
DEER RIVER BLACKBIRD 161T

66 ROSEBUD 376B 1806036

SANKEYS JUSTIFIED 101
DEER RIVER ROSEBUD 458P

AOD	BW	205D	365D	EPDs	BW	WW	YW	MILK
6	94	708	1174		+4.5	+59	+93	+17



376B

DAM OF
LOT 25



**LOT
26**

66 CONVERGENCE 420G

MALE CKM 420G 2121615 MAY 05 2019

SOUTH FORK CONVERGENCE 217Y 1640413

DEER RIVER CONVERGENCE 68R
DEER RIVER BLACKBIRD 161T

BAD LANDS ROSETTE 8110U 1429234

MINBURN FORTUNE 87R
BAD LANDS ROSETTE 829H

AOD	BW	205D	365D	EPDs	BW	WW	YW	MILK
12	94	673	1204		+4.9	+53	+90	+22

8110U

DAM OF
LOT 26



LOOKING FOR LONGEVITY?

A cow at 66 Ranch is under great scrutiny from her first calf and continuing on her entire life at our place. If they show any imperfections with feet, udder or disposition they are culled right there on the spot. Any cow 4 or 5 or 6 has been scrutinized pretty thoroughly. So with that being said, we are pretty proud to have many of the cows that raised bulls in this sale being 7 years old and older, all the way up to 17 years of age!



REFERENCE SIRE

F-R 9298 5195

MALE DMC 5195C 1951866 MAY 16 2015

WJ MECHANIC 9298W 1529581

CROWFOOT MECHANIC 5789R
CROWFOOT G V LASS 6686S

F-R 323 LASS 0133 1599736

DOUBLE AA BLACKMAN 323'05
F-R 4079 LASS 6039

EPDs	BW	WW	YW	MILK	CE	MCE
	+0.4	+29	+46	+20	+3.0	+7.0

BW: 80

A walking bull purchased from F-R Ranch, Murray and Cam Fraser. People raising cattle for all the right reasons. Functional cattle, with a particular concern about the dam behind the bull. That being said 5195 progeny will return you the females you want in your keeper pen. The Mechanic daughters we saw at Frasers were all super uddered. 5195 carried that ease of flesh year round. A super disposition on this bull as well.

2 sons sell

LOT
27

66 5195 307G

MALE CKM 307G 2112874 APRIL 29 2019

F-R 9298 5195 1951866

WJ MECHANIC 9298W
F-R 323 LASS 0133

66 LOUISE 19D 1929959

DELAR MOTIVATED 37A
HD LOUISE 311A

AOD	BW	205D	365D	EPDs	BW	WW	YW	MILK
4	69	657	1137		-2.1	+36	+56	+19



Lot 28

LOT
28

66 5195 381G

MALE CKM 381G 2112883 MAY 03 2019

F-R 9298 5195 1951866

WJ MECHANIC 9298W
F-R 323 LASS 0133

66 BLACKBIRD 159D 1930093

COLE CREEK CEDAR RIDGE 1V †
66 BLACKBIRD 313B

AOD	BW	205D	365D	EPDs	BW	WW	YW	MILK
4	68	575	1052		-1.8	+28	+50	+23



159D

DAM OF
LOT 28

REFERENCE SIRE



3 sons sell

S A V SUPERCHARGER 6813

MALE IMP 6813D † 2019463 JANUARY 04 2016

S A V RECHARGE 3436 † 1950649

RITO 707 OF IDEAL 3407 7075 †
S A V BLACKCAP MAY 4136 †

S A V MADAME PRIDE 0075 † 13592871

S A F 598 BANDO 5175 † CAC
S A V MADAME PRIDE 8264 DDC

EPDs	BW	WW	YW	MILK	CE	MCE
	+2.6	+63	+115	+20	+1.0	+2.0

An A.I. sire we chose with moderate birth weight and added performance. Expect to want to keep all the daughters, his pedigree combines two of the best cows from the SAV program. With Rito 707 in his bloodlines, will give you the feet we expect on a Black Angus animal.



Lot 29

LOT
29

66 SUPERCHARGER 9051G

MALE CKM 9051G 2121678 MAY 06 2019

S A V SUPERCHARGER 6813 † 2019463

S A V RECHARGE 3436 †
S A V MADAME PRIDE 0075 †

66 DUCHESS 376A 1739002

S A V FINAL ANSWER 0035 †
BAD LANDS DUCHESS 4040P

AOD	BW	205D	365D	EPDs	BW	WW	YW	MILK
7	96	736	1279		+2.7	+63	+112	+20

376A

DAM OF
LOT 29





LOT 30

66 SUPERCHARGER 9057G

MALE CKM 9057G 2125196 MAY 10 2019

S A V SUPERCHARGER 6813 † 2019463

S A V RECHARGE 3436 †
S A V MADAME PRIDE 0075 †

66 ERICA 3132A 1761190

BAD LANDS FORTE 382X
BAD LANDS ERICA 1140Y

AOD	BW	205D	365D	EPDs	BW	WW	YW	MILK
7	92	674	1178		+3.4	+49	+91	+21



3132A

DAM OF
LOT 30



123Z

DAM OF
LOT 31

LOT 31

66 SUPERCHARGER 9034G

MALE CKM 9034G 2112880 APRIL 30 2019

S A V SUPERCHARGER 6813 † 2019463

S A V RECHARGE 3436 †
S A V MADAME PRIDE 0075 †

SOUTH FORK PRIDE 123Z 1677195

LOOKOUT CANUCK 65U
BAD LANDS PRIDE 9034W

AOD	BW	205D	365D	EPDs	BW	WW	YW	MILK
8	84	586	1083		+2.6	+49	+85	+15

REFERENCE SIRE



S A V RENOWN 3439

MALE IMP 3439A † 1887276 ET JANUARY 07 2013

RITO 707 OF IDEAL 3407 7075 † 2069908

R R RITO 707 †
IDEAL 3407 OF 1418 076

S A V BLACKCAP MAY 4136 † 14739095

S A V 8180 TRAVELER 004 †
S A V MAY 2397 †

EPDs	BW	WW	YW	MILK	CE	MCE
	+2.8	+71	+127	+20	-3.0	+1.0

An A.I. sire we chose to use because of the calving ease, along with added performance. Great foot structure, and being a Rito bred bull we believe this to be definitely one of Rito's strong attributes.

† Indicates at least 1 genetic condition test with a free result

LOT
32

66 RENOWN 492G

MALE CKM 492G 2121816 MAY 09 2019

S A V RENOWN 3439 † 1887276

RITO 707 OF IDEAL 3407 7075 †
S A V BLACKCAP MAY 4136 †

SOUTH FORK BLACKBIRD 47Y 1640190

BLACK GEM ROVER 83R
DEER RIVER BLACKBIRD 25S

AOD	BW	205D	365D	EPDs	BW	WW	YW	MILK
9	86	670	1149		+0.4	+45	+75	+20

BRED HEIFERS & 2ND CALVERS
SELL IMMEDIATELY
FOLLOWING THE BULLS



REFERENCE SIRE



1 son sells

CONNEALY THUNDER

MALE IMP 587R † 1385922 JANUARY 28 2005

BALDRIDGE KABOOM K243 KCF † 13987017

JAUER 353 TRAVELER 589 27
PLEASANTA OF CONANGA 736

PARKA OF CONANGA 241 † 13948273

BON VIEW BANDO 598 †
PARTINA OF CONANGA 6237

EPDs	BW	WW	YW	MILK	CE	MCE
	-1.0	+42	+83	+25	+9.0	+13.0

We are really impressed with the thick, deep females he has sired. Real Angus looking cattle. Udders are near perfect. The bull calves sired by Thunder definitely have that "extra rib." Super long, deep sided cattle. He sure puts the hip on his calves and yet maintains that calving ease we are all looking for. Appears to be that all around perfect bull!



Lot 33

LOT
33

66 THUNDER 402G

MALE CKM 402G 2121606 MAY 03 2019

CONNEALY THUNDER † 1385922

BALDRIDGE KABOOM K243 †
PARKA OF CONANGA 241 †

66 BARBARA 496E 2000209

F-R CEDAR RIDGE 4210
66 BARBARA 410C

AOD	BW	205D	365D	EPDs	BW	WW	YW	MILK
3	72	585	1095		+0.3	+36	+72	+22



496E

DAM OF
LOT 33

REFERENCE SIRE



3 sons sell

STUART CHISM 82A

MALE EDAM 82A 1736988 FEBRUARY 27 2013

S CHISUM 6175 † 1539796

S ALLIANCE 3313 †
S GLORIA 464

STUART MISS ROSE 22U 1454180

DMM AMBUSH 03M
STUART MISS ROSE 12M

EPDs	BW	WW	YW	MILK	CE	MCE
	+2.8	+65	+104	-6	+4.0	+13.0

A walking bull we purchased from Stuart Cattle Station in 2014. 82A is as deep as you will find but yet the calving ease that all ranchers are looking for. 82A may be one of the most docile bulls we have found. The female side of things is even more exciting. We went to Stuart Ranch before purchasing 82A saw both the dam and grandam who was 12 at that time. After seeing both of them we were determined to own the bull!



Lot 34

LOT
34

66 CHISM 343G

MALE CKM 343G 2119654 MAY 01 2019

STUART CHISM 82A 1736988

S CHISUM 6175 †
STUART MISS ROSE 22U

66 LASSIE 529A 1755660

DEER RIVER DESIRE 564W
BAD LANDS LASSIE 127X

AOD	BW	205D	365D	EPDs	BW	WW	YW	MILK
7	85	631	1116		+2.6	+49	+81	+3

529A

DAM OF
LOT 34





Lot 35

LOT 35

66 CHISM 461G

MALE CKM 461G 2121808 MAY 06 2019

STUART CHISM 82A 1736988

S CHISUM 6175⁺
STUART MISS ROSE 22U

DEER RIVER IDELETTE 185W⁺ 1521723

DEER RIVER 145P RIGHTTIME 325T
DEER RIVER IDELETTE 226T⁺

AOD	BW	205D	365D	EPDs	BW	WW	YW	MILK
11	93	658	1152		+3.1	+48	+83	+4

ALL BULLS 100% GUARANTEED



Lot 36

LOT 36

66 CHISM 356G

MALE CKM 356G 2119668 MAY 01 2019

STUART CHISM 82A 1736988

S CHISUM 6175⁺
STUART MISS ROSE 22U

66 ZARA 121A 1738800

BOYD RESUME 9008⁺
DEER RIVER ZARA 214U⁺

AOD	BW	205D	365D	EPDs	BW	WW	YW	MILK
7	94	690	1149		+3.6	+52	+88	+11



121A

DAM OF
LOT 36

REFERENCE SIRE

WCC RESOURCE 406D

MALE XZ 406D 1916082 MARCH 30 2016

S A V RESOURCE 1441 † 1707295

RITO 707 OF IDEAL 3407 7075 †
S A V BLACKCAP MAY 4136 †

PEAKE ROSETTE 248Y 1637610

CROWFOOT 6758S
CROWFOOT ROSETTE 6274S

EPDs	BW	WW	YW	MILK	CE	MCE
	+1.2	+52	+103	+24	+8.0	+5.0

BW: 85 205D: 720 365D: 1412

A walking bull purchased from Peake Ranching, Steve and Martina Wade. A super deep sided, great footed, Resource bred son. The selection for this bull other than that he was really easy to look at was the dam behind this bull. A Predominant bred cow, sure should give you the females we all strive to produce.

1 son sells

LOT
37

66 RESOURCE 448G

MALE CKM 448G 2121627 MAY 06 2019

WCC RESOURCE 406D 1916082

S A V RESOURCE 1441 †
PEAKE ROSETTE 248Y

66 BARBARA 494C 1867541

S A V REGISTRY 2831 †
BAD LANDS BARBARA 9079W

AOD	BW	205D	365D	EPDs	BW	WW	YW	MILK
5	75	620	1006		-1.0	+38	+65	+19

494C

DAM OF
LOT 37



When you think you
are having a bad day ...

REFERENCE SIRE

COLE CREEK CEDAR 1346

MALE IMP 1346D 1963227 FEBRUARY 09 2016

COLE CREEK CEDAR 791 17039944

C H QUANTUM 6247
COLE CREEK CLOVA JUANADA 44N

COLE CREEK 104 JUANADA 1041 17040023

COLE CREEK GOLDMERE 70V
COLE CREEK 104 JUANADA 107V

EPDs	BW	WW	YW	MILK	CE	MCE
	-4.6	+10	+37	+29	+14.0	+10.0

BW: 65 205D: 564

A walking bull purchased from Cole Creek Angus. An absolute "sleep all night" heifer bull. This bull has one of the prettiest heads we have ever seen on an angus bull. Easy keeper, super female maker, and growth factor we all want outside of the cow.

1 son sells

LOT
38

66 CEDAR 399G

MALE CKM 399G 2121596 MAY 03 2019

COLE CREEK CEDAR 1346 1963227

COLE CREEK CEDAR 791
COLE CREEK 104 JUANADA 1041

66 BARBARA 472E 1997582

SANKEYS JUSTIFIED 101
BAD LANDS BARBARA 9061W

AOD	BW	205D	365D	EPDs	BW	WW	YW	MILK
3	75	588	1046		+0.5	+28	+54	+23



472E

DAM OF
LOT 38

REFERENCE SIRE

66 CEDAR WIND 178C

MALE CKM 178C 1867240 APRIL 19 2015

V D A R CEDAR WIND 8111 1751551

COLE CREEK CEDAR RIDGE 1V †
V D A R CHLOE 9727

BAD LANDS COUNTESS 5032R 1270120

HERO 6267 OF R R 2418 OSF
BAD LANDS COUNTESS 351N

EPDs	BW	WW	YW	MILK	CE	MCE
	-1.6	+51	+68	+27	+12.0	+12.0

BW: 73 205D: 664 365D: 1117

A walking bull raised at 66 Ranch. Bull calves average 81 lbs. at birth and the heifer calves 74 lbs. 178C has great performance and a dam all the cowboys would love. A moderate, deep sided Hero bred cow. Hero cattle are very well known for their extreme docility. Maternal grandam is a Leachman Right Time bred cow. Pretty confident you will want to keep all the females.

1 son sells



Lot 39

**LOT
39**

66 CEDAR WIND 481G

MALE CKM 481G 2112891 MAY 09 2019

66 CEDAR WIND 178C 1867240

V D A R CEDAR WIND 8111
BAD LANDS COUNTESS 5032R

66 BLACKBIRD 335D 1930261

66 ALLIANCE 17Z
SOUTH FORK BLACKBIRD 165X

AOD	BW	205D	365D	EPDs	BW	WW	YW	MILK
4	81	619	1162		+2.2	+54	+87	+22

BULL VIEWING



Bulls will be available for viewing at
Bow Slope Shipping Association
on

TUESDAY, DECEMBER 8

*Updated weights & measurements
will be available Sale Day*

CATALOG & VIDEO ONLINE

at www.66ranchltd.com & www.dvauction.com

REFERENCE SIRE

66 SEVEN SON 26D

MALE CKM 26D 1929966 TWIN APRIL 09 2016

COLE CREEK SEVEN SON 1394 1844692

COLE CREEK SEVEN SON 67T
COLE CREEK JUANADALEEN 1240

BAD LANDS BARBARA 9061W 1502416

HBR ECLIPSE 7116
BAD LANDS BARBARA 168L

EPDs	BW	WW	YW	MILK	CE	MCE
	+6.0	+51	+88	+14	-3.0	+8.0

BW: 92 205D: 642 365D: 1208

A bull raised at 66 Ranch purchased by the Sewall Brothers at our 2017 Spring Sale. 9061W, the dam is in our flush program at 66 Ranch. So we thought it would be foolish not to use semen out of this "Super Star!" 26D will give you deep sided cattle with super top lines. And of course the maternal side is fantastic, if you are looking to make deep sided, perfect uddered, feminine cows that stand up in tough conditions, give this sire group a look.

2 sons sell



9061W
DAM OF
66 SEVEN
SON 26D



Lot 40

**LOT
40**

66 SEVEN SON 370G

MALE CKM 370G 2119672 MAY 02 2019

66 SEVEN SON 26D 1929966

COLE CREEK SEVEN SON 1394
BAD LANDS BARBARA 9061W

66 LASSIE 147C 1867209

BOYD RESUME 9008 †
BAD LANDS LASSIE 1016Y

AOD	BW	205D	365D	EPDs	BW	WW	YW	MILK
5	77	688	1173		+2.3	+48	+80	+22

NO BULLS HAVE BEEN SOLD PRIOR TO THE SALE



Lot 41

**LOT
41**

66 SEVEN SON 445G
 MALE CKM 445G 2121562 MAY 06 2019

66 SEVEN SON 26D 1929966

COLE CREEK SEVEN SON 1394
 BAD LANDS BARBARA 9061W

66 B B BLOSSOM 239B 1805896

VISION UNANIMOUS 1418⁺
 BAD LANDS B B BLOSSOM 72X

AOD	BW	205D	365D	EPDs	BW	WW	YW	MILK
6	86	630	1070		+3.9	+47	+78	+17



239B
 DAM OF
 LOT 41

LOOK FOR THE
 '66' FREEZE
 BRAND



IT'S THE SERVICE AFTER THE SALE THAT COUNTS!

REFERENCE SIRE



2 sons sell

HOOVER DAM

MALE IMP 18U † 1552414 JANUARY 25 2008

SYDGEN C C & 7 † 1552417

S A F CONNECTION †
SYDGEN FOREVER LADY 4087 †

ERICA OF ELLSTON C124 14851883

TC GRIDIRON 258 †
ERICA OF ELLSTON V65

EPDs	BW	WW	YW	MILK	CE	MCE
	-0.3	+46	+88	+25	+7.0	+8.0

An A.I. sire we used exclusively on heifers. A real calving ease sire, that produces thick attractive progeny. The females are quite attractive with excellent udders.



Lot 42

LOT
42

66 HOOVER DAM 440G

MALE CKM 440G 2121622 MAY 06 2019

HOOVER DAM † 1552414

SYDGEN C C & 7 †
ERICA OF ELLSTON C124

T Z FRECKLES 6W 1494008

L T 598 BANDO 9074 †
T Z HOLLY 1H

AOD	BW	205D	365D	EPDs	BW	WW	YW	MILK
11	80	617	1060		+0.5	+40	+73	+22



6W

DAM OF
LOT 42



**LOT
43**

66 HOOVER DAM 416G

MALE CKM 416G 2121614 MAY 04 2019

HOOVER DAM † 1552414

SYDGEN C C & 7 †
ERICA OF ELLSTON C124

66 QUEEN 229E 1997279

CONNEALY THUNDER †
66 QUEEN 447C

AOD	BW	205D	365D	EPDs	BW	WW	YW	MILK
3	74	520	1037		+1.0	+34	+72	+21

PHONE BIDDING AVAILABLE

SALE DAY PHONES

AUCTION MART 403-362-5521

KELSEY'S CELL 403-362-0672

MALISSA'S CELL 403-501-9358



REFERENCE SIRE

COLE CREEK RIDGE LINE 216

MALE IMP 0216D 1963221 FEBRUARY 17 2016

COLE CREEK RIDGE LINE 1243 17622265

COLE CREEK RIDGE 1340
COLE CREEK JUANADA MIST 12T

FCOLE CREEK JUANADA G 743 17622336

COLE CREEK BLACK CEDAR 1100
COLE CREEK JUANADA G 15W

EPDs	BW	WW	YW	MILK	CE	MCE
	+0.7	+46	+70	+23	+8.0	+7.0

BW: 77

A walking bull we purchased from Cole Creek Angus. 216D is fat 365 days a year. Very attractive cattle sired by 216D, deep, easy keeping, really pretty headed.

1 son sells

† Indicates at least 1 genetic condition test with a free result



LOT
44

66 RIDGE LINE 506G

MALE CKM 506G 2125191 MAY 10 2019

COLE CREEK RIDGE LINE 216 1963221

COLE CREEK RIDGE LINE 1243
FCOLE CREEK JUANADA G 743

66 GEORGINA 241D 1930177

VISION UNANIMOUS 1418 †
BAD LANDS GEORGINA 4046P

AOD	BW	205D	365D	EPDs	BW	WW	YW	MILK
4	71	693	1189		-0.3	+55	+86	+22



PERFORMANCE DATA

AOD: Age of Dam

BW: Actual Birth Weight

205D: Weaning Weight in lbs. adjusted to 205 days

365D: Yearling Weight in lbs. adjusted to 365 days

Average Black Angus EPDs for all calves born in 2019

EPDs	BW	WW	YW	MILK	TM	CE	MCE
	+2.1	+47	+83	+22	+44	+3.4	+7.1

EPDs in this catalog are as of Oct. 29/20

REFERENCE SIRE



3 sons sell

V D A R CEDAR WIND 8111

MALE IMP 8111Y 1751551 JANUARY 06 2011

COLE CREEK CEDAR RIDGE 1V † 1659099

COLE CREEK BLACK CEDAR 46P †
COLE CREEK CLOVANADA 49S

V D A R CHLOE 9727 16434284

V D A R REALLY WINDY 4097 †
V D A R CHLOE 6320

EPDs	BW	WW	YW	MILK	CE	MCE
	-1.3	+48	+83	+28	+11.0	+12.0

An A.I. heifer bull we used from Cole Creek bloodlines. Extreme docility with a very moderate birth weight and excellent performance. We are very pleased with growth after weaning, competing very well with all the other performance sires. The real "cow man's" kind of cattle! Excellent females sired by Cedar Wind with superb udders.



Lot 45

LOT
45

66 CEDAR WIND 468G

MALE CKM 468G 2121810 MAY 07 2019

V D A R CEDAR WIND 8111 1751551

COLE CREEK CEDAR RIDGE 1V †
V D A R CHLOE 9727

66 MIDDLEBROOK 380C 1867438

66 ALLIANCE 17Z
DEER RIVER MIDDLEBROOK 383W

AOD	BW	205D	365D	EPDs	BW	WW	YW	MILK
5	81	719	1138		+1.9	+55	+88	+25

380C

DAM OF
LOT 45



LOT
46

66 CEDAR WIND 9040G

MALE CKM 9040G 2121555 MAY 01 2019

V D A R CEDAR WIND 8111 1751551

COLE CREEK CEDAR RIDGE 1V †
V D A R CHLOE 9727

66 COUNTESS 7017E 1997149

S A V RENOWN 3439 †
66 COUNTESS 3115A

AOD	BW	205D	365D	EPDs	BW	WW	YW	MILK
3	83	589	1136		+2.2	+47	+88	+23



LOT
47

66 CEDAR WIND 377G

MALE CKM 377G 2121579 MAY 02 2019

V D A R CEDAR WIND 8111 1751551

COLE CREEK CEDAR RIDGE 1V †
V D A R CHLOE 9727

66 STETSON 86E 1997146

COLE CREEK SEVEN SON 1394
66 STETSON 18B

AOD	BW	205D	365D	EPDs	BW	WW	YW	MILK
3	80	591	987		+0.9	+34	+58	+23

CALVING EASE BULLS

“Heifer Bulls” are indicated with

BOLD PRINT BW



REFERENCE SIRE



1 son sells

HILLTOP TRUE GRIT 9202

IMP 9202W 1934390 JANUARY 29 2009

SITZ ALLIANCE 7544 14658781

SITZ ALLIANCE 6595 †
SITZ PRIDE 2561

HILLTOP CANDY LASS 713 15924051

ER BUSHWACKER 06P1
HILLTOP CANDY LASS T9

EPDs	BW	WW	YW	MILK	CE	MCE
	-0.4	+58	+97	+24	+15.0	+5.0

An A.I. sire we are really excited about, recommended by our good friends at Universal in Great Falls. Explained we would love the females, we sure have! They had told us that the True Grit female side is absolutely outstanding, so we were sold quickly. A low birth weight sire with tremendous growth. Looking like another all-around kind of bull.



Lot 48

LOT
48

66 TRUE GRIT 369G

MALE CKM 369G 2119671 MAY 02 2019

HILLTOP TRUE GRIT 9202 1934390

SITZ ALLIANCE 7544
HILLTOP CANDY LASS 713

66 LASSIE 161B 1805825

CONNELLY THUNDER †
BAD LANDS LASSIE 6040S

AOD	BW	205D	365D	EPDs	BW	WW	YW	MILK
6	92	788	1416		+2.4	+71	+124	+27

161B

DAM OF
LOT 48



REFERENCE SIRE

66 THUNDER 90B

MALE CKM 90B 1805761 APRIL 11 2014

CONNEALY THUNDER † 1385922

BALDRIDGE KABOOM K243 KCF †
PARKA OF CONANGA 241 †

BAD LANDS BLACK LASS 62X 1555673

BAD LANDS FORTE 5S
BAD LANDS BLACK LASS 5038R

EPDs	BW	WW	YW	MILK	CE	MCE
	-1.3	+34	+59	+20	+11.0	+12.0

BW: 77 205D: 644 365D: 1224

A walking bull raised by us going back to "Thunder" on the sire side. A calving ease bull with great performance. Very attractive bull with great curves. His dam is possibly one of our most favorite cows at the ranch. Cattlemen keep the females!

1 son sells



Lot 49

**LOT
49**

66 THUNDER 511G

MALE CKM 511G 2129240 MAY 10 2019

66 THUNDER 90B 1805761

CONNEALY THUNDER †
BAD LANDS BLACK LASS 62X

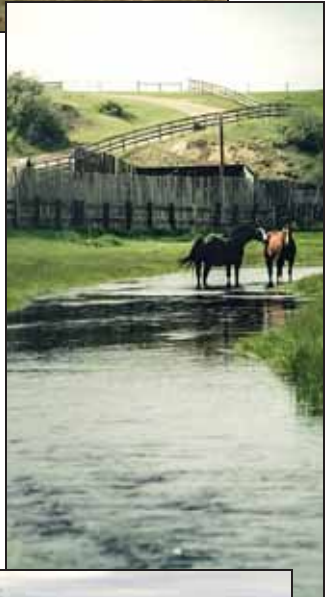
66 ERICA 536C 1876645

BAD LANDS ATTRACTION 109Y
BAD LANDS ERICA 22K

AOD	BW	205D	365D	EPDs	BW	WW	YW	MILK
5	72	611	1118		+0.1	+32	+58	+17



BRED HEIFERS & 2ND CALVERS SELL
IMMEDIATELY FOLLOWING THE BULLS



Visit **66RANGLTD.COM** for
online catalog, videos & updates

ALL FEMALES BRED TO BLACK ANGUS BULLS
& PREG CHECKED SAFE

SELLING IMMEDIATELY FOLLOWING THE BULLS

COMMERCIAL 2ND CALVERS

LOT
50

15 FANCY COMMERCIAL 2ND CALVERS - NVB
BULL EXPOSED JULY 15TH

LOT
51

15 FANCY COMMERCIAL 2ND CALVERS - NVB
BULL EXPOSED JULY 15TH

LOT
52

15 FANCY COMMERCIAL 2ND CALVERS - NVB
BULL EXPOSED JULY 15TH

LOT
53

10 FANCY COMMERCIAL 2ND CALVERS - NVB
BULL EXPOSED JULY 15TH

LOT
54

5 FANCY BBF COMMERCIAL 2ND CALVERS - NVB
BULL EXPOSED JULY 15TH



WE ASK . . .

**THAT ALL BULLS & FEMALES
BE TAKEN HOME RIGHT AFTER THE SALE**

**PUREBRED
BRED HEIFERS**

**LOT
55**

**20 REGISTERED 66 RANCH BLACK ANGUS
BRED HEIFERS - SELLING AS COMMERCIAL HEIFERS**
AI'ED JULY 14TH - EXPOSED FOR 42 DAYS

**LOT
56**

**20 REGISTERED 66 RANCH BLACK ANGUS
BRED HEIFERS - SELLING AS COMMERCIAL HEIFERS**
AI'ED JULY 14TH - EXPOSED FOR 42 DAYS

**LOT
57**

**10 REGISTERED 66 RANCH BLACK ANGUS
BRED HEIFERS - SELLING AS COMMERCIAL HEIFERS**
AI'ED JULY 14TH - EXPOSED FOR 42 DAYS

**LOT
58**

**6 REGISTERED 66 RANCH BLACK ANGUS
BRED HEIFERS - SELLING AS COMMERCIAL HEIFERS**
AI'ED JULY 14TH - EXPOSED FOR 42 DAYS



COMMERCIAL BRED HEIFERS

LOT
59

20 VERY FANCY 66 RANCH
COMMERCIAL BRED HEIFERS - NVB
BULL EXPOSED JULY 10TH - EXPOSED FOR 42 DAYS

LOT
60

20 VERY FANCY 66 RANCH
COMMERCIAL BRED HEIFERS - NVB
BULL EXPOSED JULY 10TH - EXPOSED FOR 42 DAYS

LOT
61

20 VERY FANCY 66 RANCH
COMMERCIAL BRED HEIFERS - NVB
BULL EXPOSED JULY 10TH - EXPOSED FOR 42 DAYS

LOT
62

15 VERY FANCY 66 RANCH
COMMERCIAL BRED HEIFERS - NVB
BULL EXPOSED JULY 10TH - EXPOSED FOR 42 DAYS

LOT
63

15 VERY FANCY 66 RANCH
COMMERCIAL BRED HEIFERS - NVB
BULL EXPOSED JULY 10TH - EXPOSED FOR 42 DAYS

LOT
64

10 VERY FANCY 66 RANCH
COMMERCIAL BRED HEIFERS - NVB
BULL EXPOSED JULY 10TH - EXPOSED FOR 42 DAYS

THANK YOU TO JON LATRACE TRUCKING

The Latrace Family



DVAuction

www.dvauction.com

Watch & Bid online for FREE!

Can't make the sale?

Let DVAuction bring the sale to you!

Busy during the sale?

Let DVAuction represent your bid!

Visit www.dvauction.com and Register!

It's as easy as 1, 2, 3...

1. Create an account at www.dvauction.com under the "create new account" tab
2. Apply for bidding by clicking "apply for bidding" in the upper left corner of your screen, at least 24 hours prior to the auction
3. Tune into the sale and make your purchases!

For General Questions Please Contact Our Office:
(402) 316-5460 or support@dvauction.com

*High Speed Internet Access Required

**PLEASE JOIN US
AFTER THE SALE**

FOR AN ANGUS STEAK AND
A LITTLE "COUNTRY HOSPITALITY"





THANK YOU TO

Sarah Buchanan

at Golden Thread Livestock Images for doing such an amazing job of taking the pictures and videos of the bulls

Rose Currie – for cleaning up the bulls

& Jan Lee – for designing the catalog

NEXT 66 RANCH LTD. SALE

10th Annual

SPRING BULL SALE

Thursday, April 22, 2021 - 1 pm

Bow Slope Shipping Association, Brooks, AB

8th Annual

66 RANCH PAIR SALE

Friday, May 14, 2021

Bow Slope Shipping Association, Brooks, AB



Thanks for the support!

We want to thank our customers and all who participated in our last bull sale. Your support is greatly appreciated. We look forward to seeing you at our sale. To our new customers, a warm welcome. Whether a bull gets bought or not, we look forward to visiting with all of you after the sale.

Kelsey, Malissa, Brett and Carter

TERMS & CONDITIONS

TERMS - TERMS OF THIS SALE ARE CASH OR CHEQUE PAYABLE IN CANADIAN FUNDS. THE RIGHT TO PROPERTY SHALL NOT PASS UNTIL AFTER SETTLEMENT HAS BEEN MADE. ALL SETTLEMENTS MUST BE MADE WITH THE CLERKS OF THE SALE BEFORE CATTLE WILL BE RELEASED.

BIDS - EVERY ANIMAL ENTERING THE RING WILL BE SOLD TO THE HIGHEST BIDDER; AUCTIONEER'S DECISION WILL BE FINAL.

PURCHASERS RISK - EACH ANIMAL BECOMES THE RISK OF THE PURCHASER AS SOON AS SOLD. INSURANCE WILL BE AVAILABLE SALE DAY.

CATTLE INSPECTION - ALL CATTLE WILL CARRY IDENTIFICATION TAGS CORRESPONDING TO SALE LOT NUMBERS THEY ALSO WILL HAVE R.F.I.D. TAGS.

ANNOUNCEMENTS - ERRORS OR OMISSIONS IN THE CATALOG WILL BE ANNOUNCED BEFORE SALE AND ANY CORRECTIONS WILL TAKE PRECEDENCE OVER PRINTED MATTER IN THE CATALOG.

BREEDING GUARANTEE - ALL CATTLE ARE SOUND AND RIGHT AND SELL WITH "RESPONSIBLE BREEDER GUARANTEE AND SATISFACTION". IN THE EVENT OF AN UNLIKELY DISPUTE, THE REGULAR TERMS AND CONDITIONS STANDARD WITH THE CANADIAN ABERDEEN ANGUS ASSOCIATION SHALL APPLY. IN ANY CASE, THE SELLER IS NOT RESPONSIBLE FOR MORE THAN THE PRICE THE BULL WAS DECLARED SOLD FOR ON SALE DAY.

ACCIDENTS - ANY PERSON ATTENDING THE SALE DOES SO AT THEIR OWN RISK AND RECOGNIZES THAT THERE ARE INHERENT DANGERS. ALTHOUGH EVERY PRECAUTION WILL BE TAKEN TO PROTECT THE SAFETY AND COMFORT OF BUYERS, NEITHER THE SALES MANAGER, AUCTIONEER NOR ANY OWNER ASSUMES ANY RESPONSIBILITY IN THIS MATTER AND DISCLAIMS ANY LIABILITY, LEGAL OR OTHERWISE, IN THE EVENT OF AN ACCIDENT OR LOSS OF PROPERTY.

LIABILITY - PURCHASERS MUST LOOK TO THE SELLER OF ANIMAL FOR FULFILLMENT OF ALL GUARANTEES AND REPRESENTATIONS MADE HEREUNDER. SOUTHERN ALBERTA LIVESTOCK EXCHANGE ARE ACTING AS AGENTS AND ASSUME NO RESPONSIBILITY FOR REPRESENTATIONS MADE BY THE SELLER.

PHONE, MAIL OR SIGHT UNSEEN BIDS - ALL BIDS WILL BE IN COMPLETE CONFIDENCE WITH SALES STAFF LISTED OR OWNERS.



*Where Customers
Become Friends*





BOX 66
DUCHESS, AB T0J 0Z0

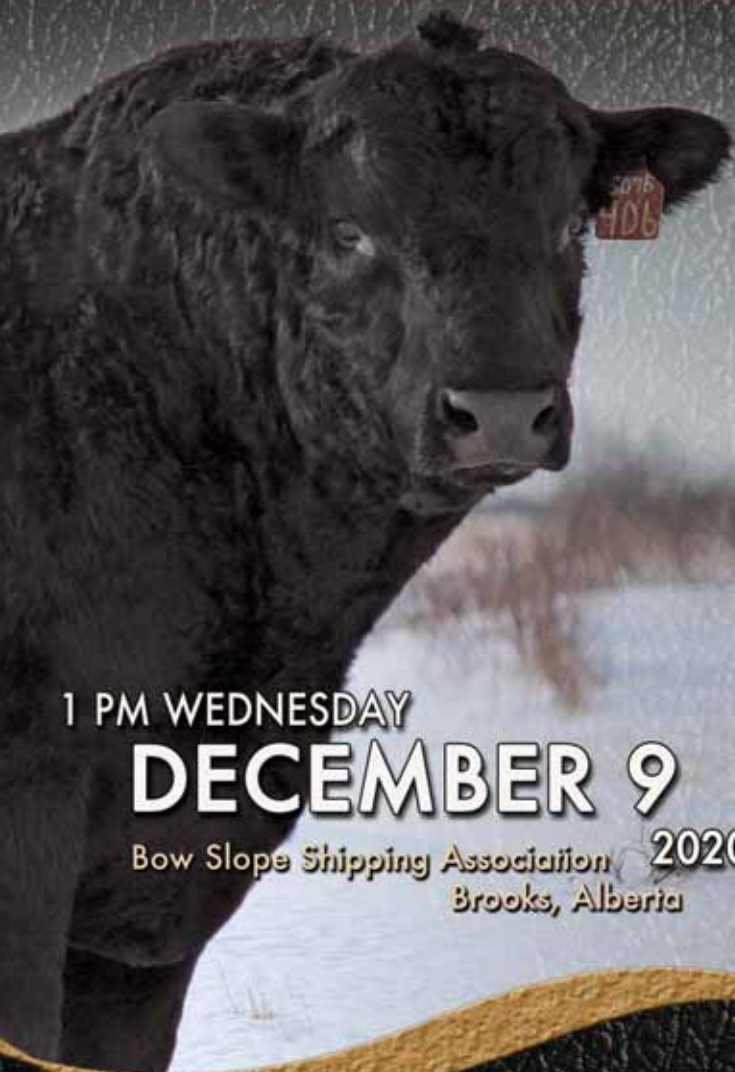


RETURN POSTAGE GUARANTEED
PORT DE RETOUR GARANTI

7th Annual

Fall

BULL SALE



1 PM WEDNESDAY

DECEMBER 9

Bow Slope Shipping Association 2020
Brooks, Alberta

Run under strict
range conditions

www.66RanchLtd.com